



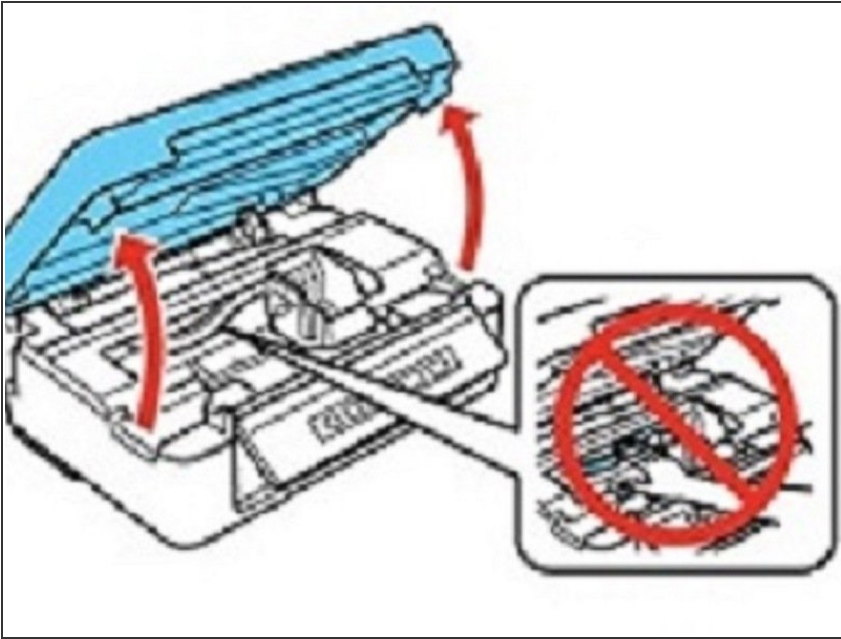
# Epson NX230 Ink Cartridges Replacement

Directions from Epson on the correct way to replace the ink cartridges in the NX230. Put together so well anyone should be able to follow.

Written By: Jeff Andrews

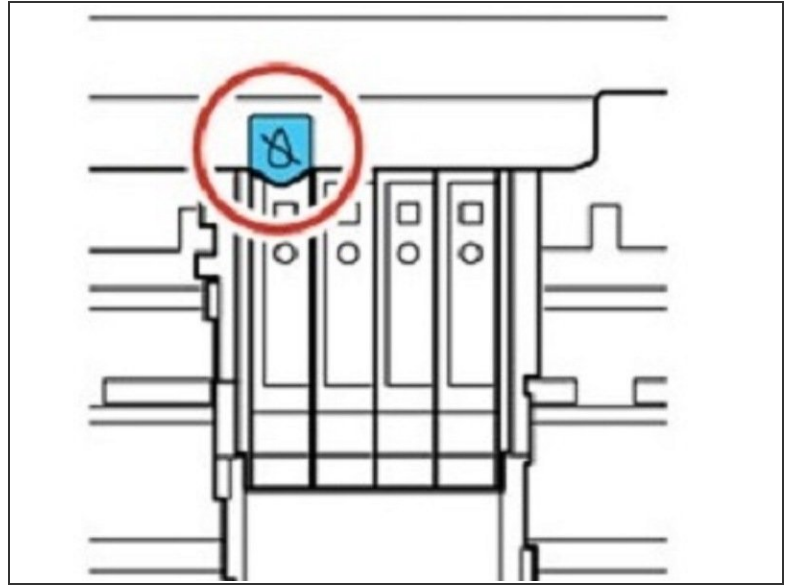


## Step 1 — Open'er up and let's get started



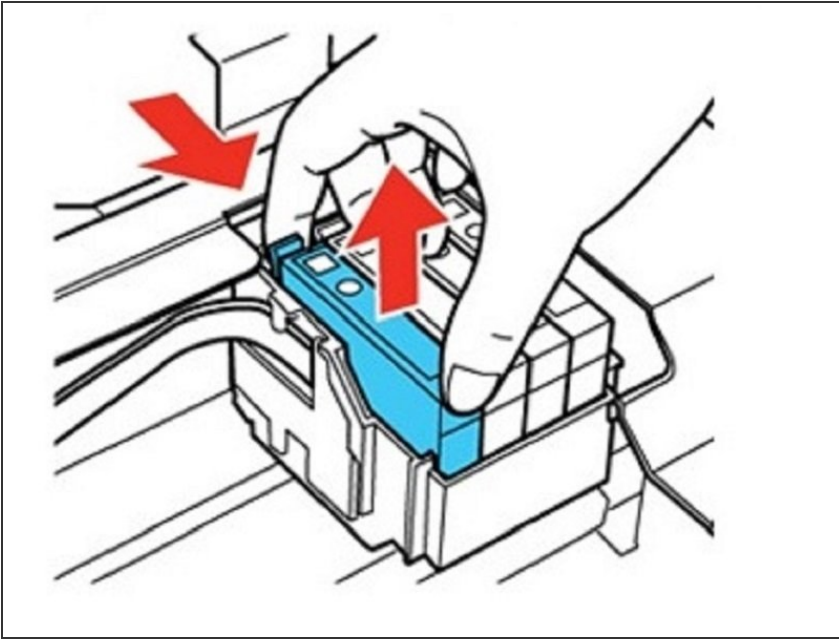
- Make sure you have your replacement cartridges handy before you begin. You must install new cartridges immediately after removing the old ones.
- **\*\*CAUTION\*\***: Leave your old cartridges in the printer until you are ready to replace them to prevent the print head nozzles from drying out. Do not open ink cartridge packages until you are ready to install the ink. Cartridges are vacuum packed to maintain reliability.
- 1. Turn on your product.
- 2. Lift up the scanner unit.

## Step 2 — Finding out which need attention..



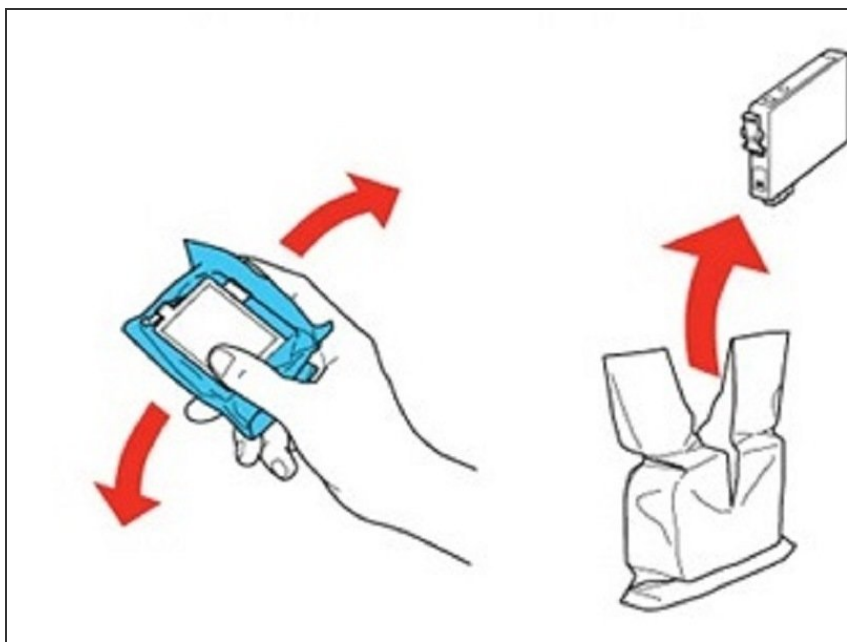
- **\*\*CAUTION\*\***: Do not move the print head by hand; otherwise, you may damage your product. Do not touch the flat white cable inside the printer.
- 3. Press the STOP button
- If a cartridge is low or expended, the print head moves that cartridge to the indicator position. Press the stop button again to check for additional low or expended cartridges. When all cartridges have been identified, the print head moves to the replacement position.

### Step 3 — Removal, be careful!



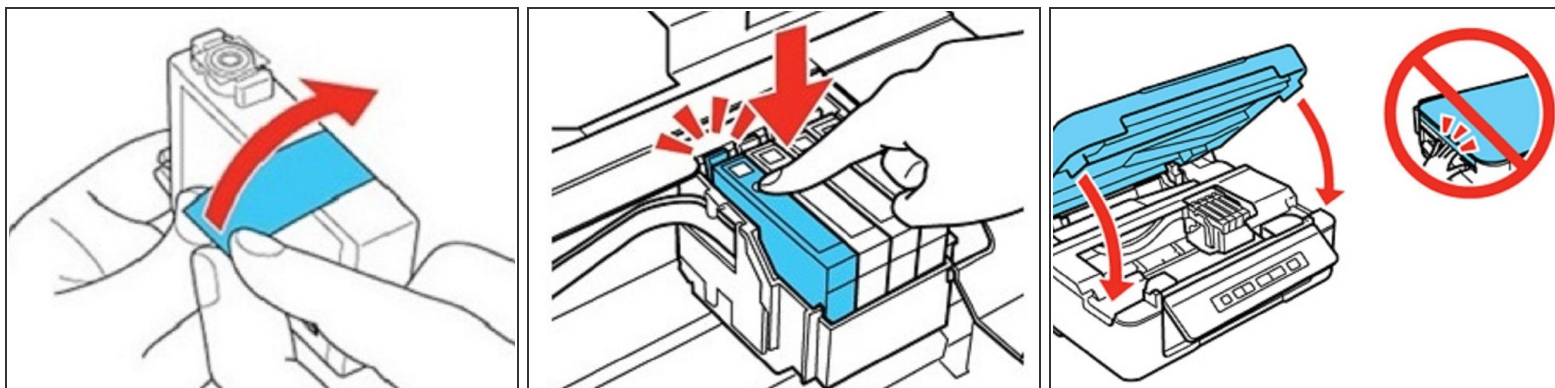
- 4. Squeeze the tab on the cartridge and lift the cartridge straight up to remove it.
- Note: Dispose of used cartridges carefully. Do not take the used cartridge apart or try to refill it.
- Warning: If ink gets on your skin, wash it thoroughly with soap and water. If ink gets into your eyes, flush them immediately with water. If ink gets into your mouth, spit it out and see a doctor right away. Keep ink cartridges out of the reach of children.

## Step 4 — Shake it , don't break it =)



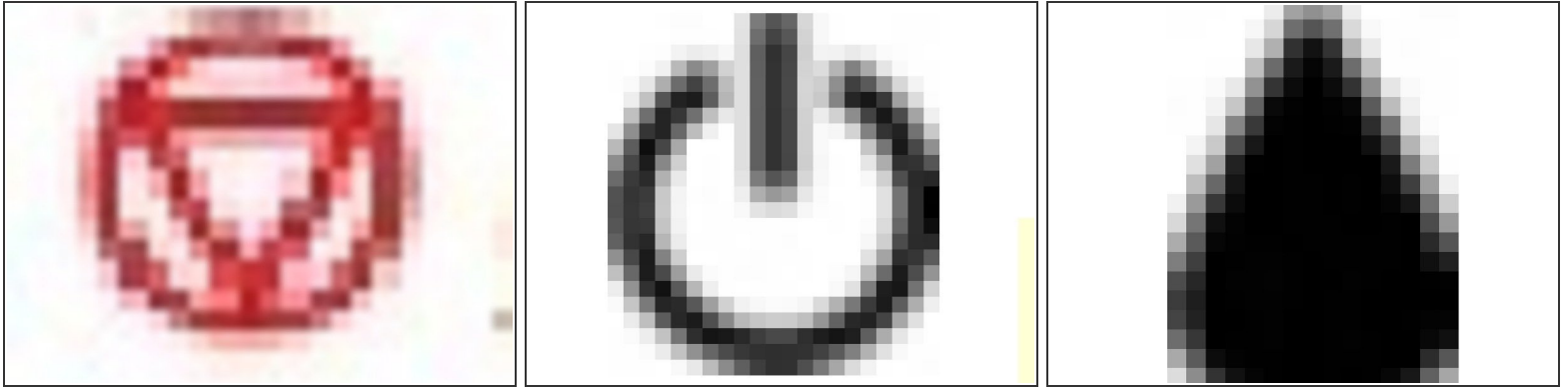
- 5. Before opening the new cartridge package, shake it gently four or five times.
- Caution: Do not shake the cartridges after opening the packages, or ink may leak.
- 6. Remove the cartridge from the package.
- **\*\*CAUTION\*\***: Do not touch the green chip on the cartridge. Install the new cartridge immediately after removing the old one; if you do not, the print head may dry out and be unable to print.

## Step 5 — Let it breath!! Remove the yellow tape.



- 7. Remove the yellow tape from the bottom of the cartridge.
- **\*\*CAUTION\*\***: Do not remove any other labels or seals, or ink will leak.
- 8. Insert the new cartridge into the holder and push it down until it clicks into place.
- 9. Lower the scanner unit.

## Step 6 — Finishing up.



- 10. Press the stop button. The print head moves to its home position and the printer starts charging the ink. This takes about 2 minutes. When the power light stops flashing and remains on, ink charging is finished.
  - **\*\*CAUTION\*\***: Never turn off the product while the power light is flashing or you will waste ink.
  - Note: If the ink light is on after the print head moves to its home position or the power light is still flashing 3 minutes after replacing a cartridge, an ink cartridge may not be installed properly. Press the stop button, then press the ink cartridge down until it clicks into place.
- If you remove a low or expended ink cartridge, you cannot re-install and use the cartridge.
- Caution: If you remove an ink cartridge for later use, protect the ink supply area from dirt and dust and store it in the same environment as the printer.
- The valve in the ink supply port is designed to contain any excess ink, but do not touch the ink supply port or surrounding area. Always store ink cartridges with the label facing up; do not store cartridges upside-down.

To reassemble your device, follow these instructions in reverse order.