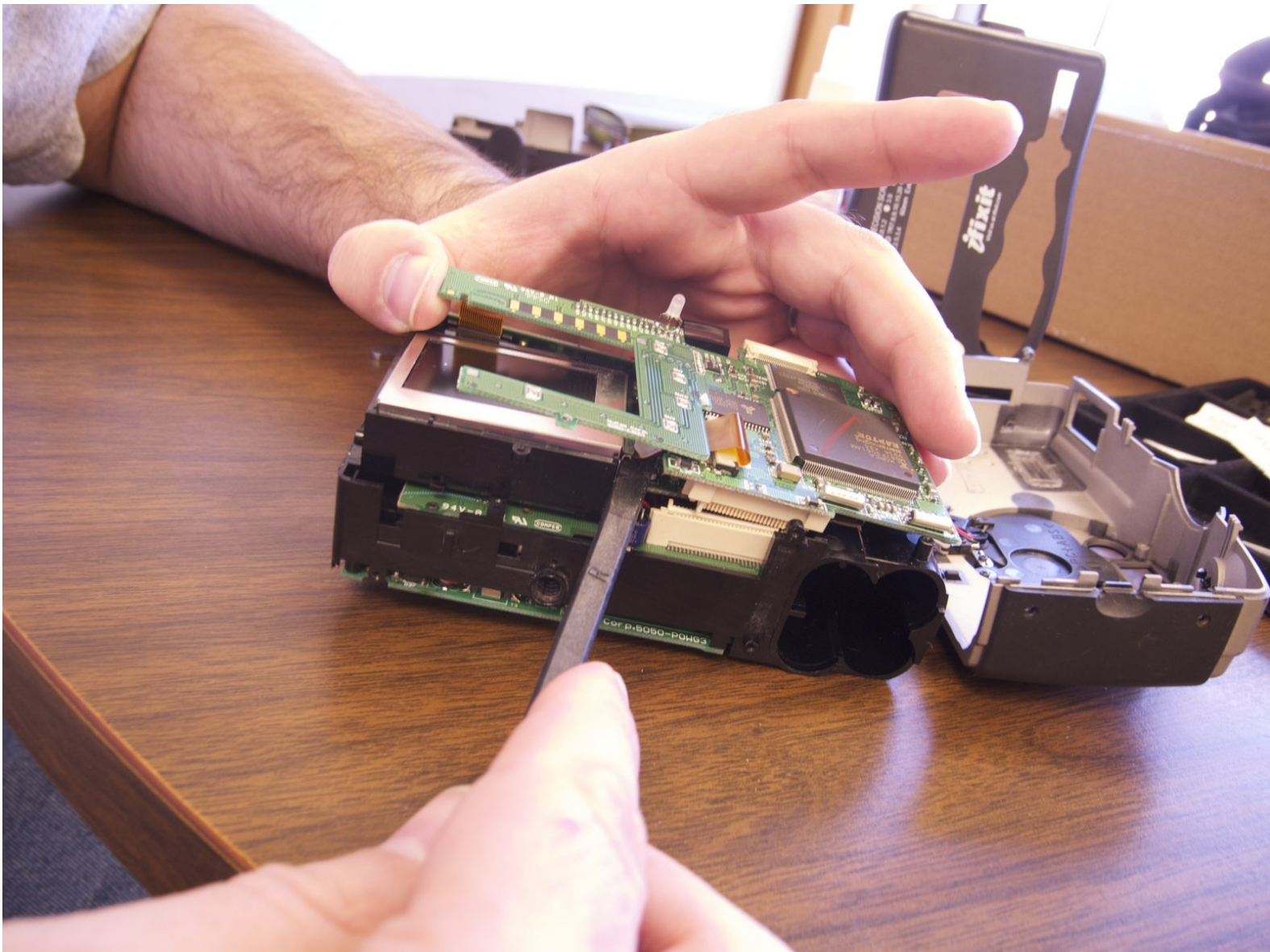




Epson PPC650 Accessing the old screen and installing the new screen Replacement

How to get to the old screen and place new screen located inside of the camera

Written By: Anne





TOOLS:

- [Phillips #00 Screwdriver](#) (1)
 - [Spudger](#) (1)
-

Step 1 — Disassembling Epson PPC650 Camera Casing



- Make sure the camera is turned off here.
- Remove batteries from the battery compartment located on the bottom of the camera
- Remove SD card for the card reader compartment located on the flat side (left side) of the camera

Step 2



- Remove 2 screws on the rounded side of the camera wisdom here.

Step 3



- Remove 3 screws on the flat side of the camera
 - All silver screws go into the side of the camera that is silver
 - All black screws go into the side of the camera that is black

Step 4



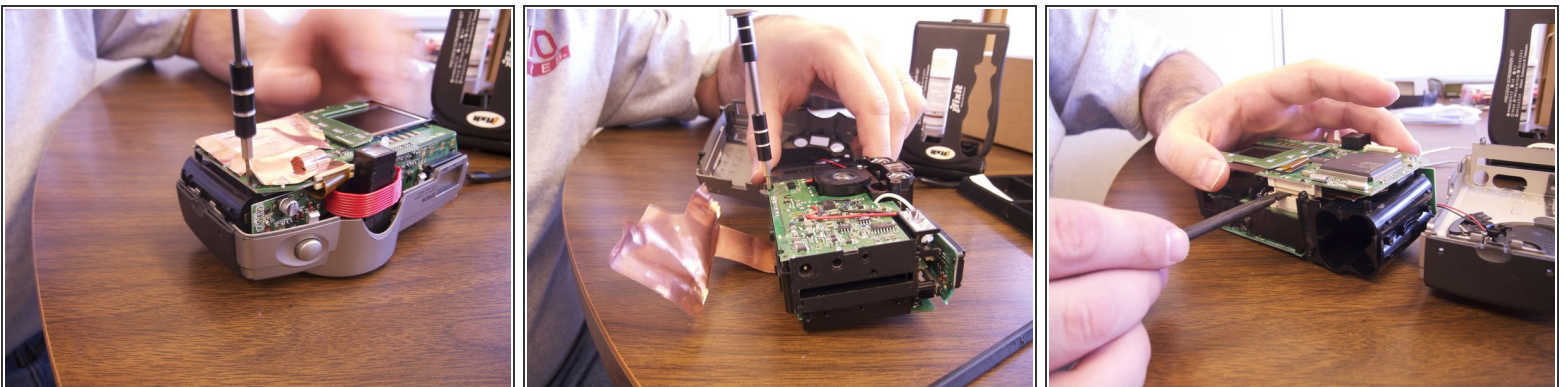
- Remove 4 screws from the bottom of the camera
- All silver screws go into the side of the camera that is silver
- All black screws go into the side of the camera that is black

Step 5



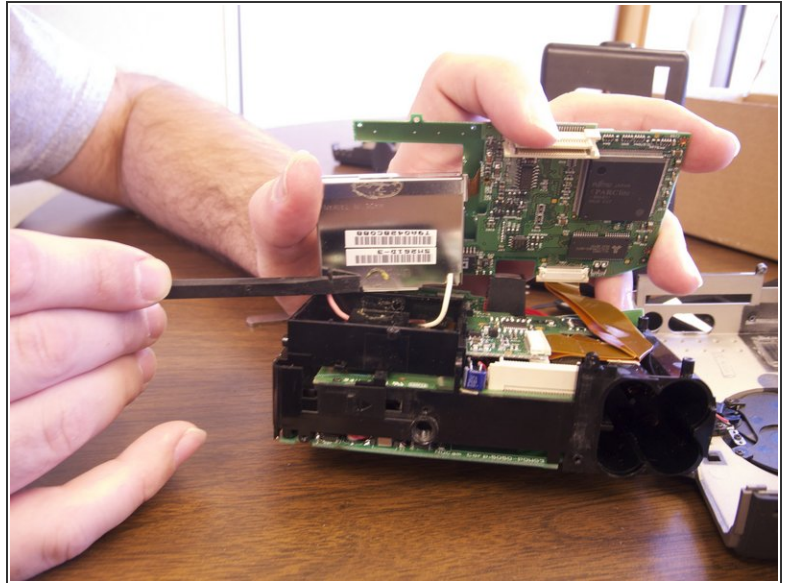
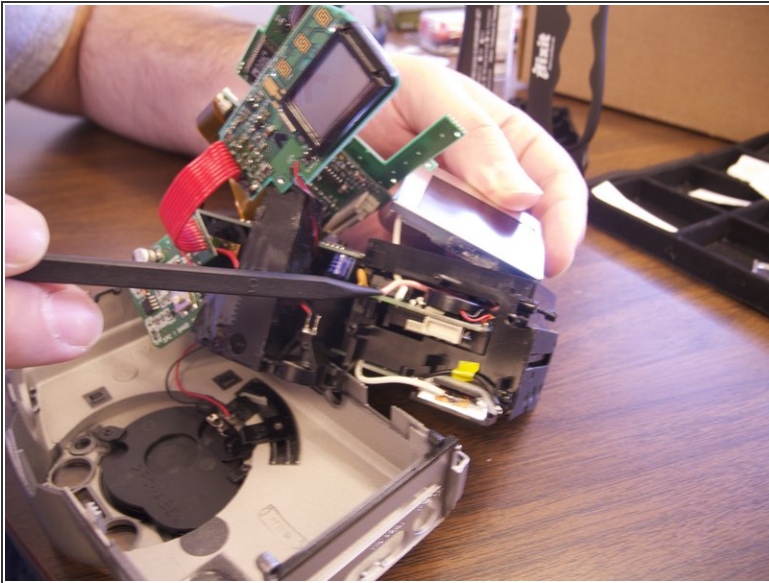
- Separate the front and back pieces of the cameras plastic casing using a spudger here.
- **WARNING:** When pulling the front plastic casing, be careful of the wire that are connected to the aperture control
- Use minimal force so that the plastic casing does not break
- When separating the small silver sliding indicator for view/off/playback may fall out
- The plastic viewing window located on the top of the camera may also become lose and fall out

Step 6 — Accessing the old screen and installing the new screen



- Remove copper sheet from the front paneling and back.
- You will need to use a spudger to unsolder the copper paneling
- Use the spudger to separate the back circuit board from the camera

Step 7



- The picture viewing screen is glued to the backing as well as wired in with pink and white wires.
 - Exert minimal force required to pull the screen loose from the camera
 - Remove the pink and white wiring from the internal paneling. These wires are soldered in
 - Remove the orange data hookup cable which feeds into the back circuit board

Step 8



- Once all wires have been detached and the old screen has been removed place the new screen into the camera.
- Insert data hookup into the back of the camera and into the new screen
- Re-solder the new pink and white wire onto the internal circuit board

To reassemble your device, follow these instructions in reverse order.