



Epson Stylus NX230 Motherboard Replacement

This guide will allow you to remove the motherboard from the printer in order to adjust or replace it.

Written By: Kimberly Pugel



INTRODUCTION


The motherboard connects and supplies power to every part of the printer. If your printer is unresponsive, then a connection may be faulty and you will need to remove the motherboard to assess what is wrong.

TOOLS:

- [iFixit Opening Tools](#) (1)
 - [Phillips #2 Screwdriver](#) (1)
-


Step 1 — Motherboard



 Check to make sure the printer is unplugged to prevent electric shock.

Step 2



- Align your printer so that the front buttons face to the right.
- Remove the 3mm Phillips #2 screw in the hole in the top left corner. This screw attaches the side panel to the printer.
-  Store the screws in a safe place so you can access them later.

This document was generated on 2019-09-18 03:15:27 PM (MST).

Step 3



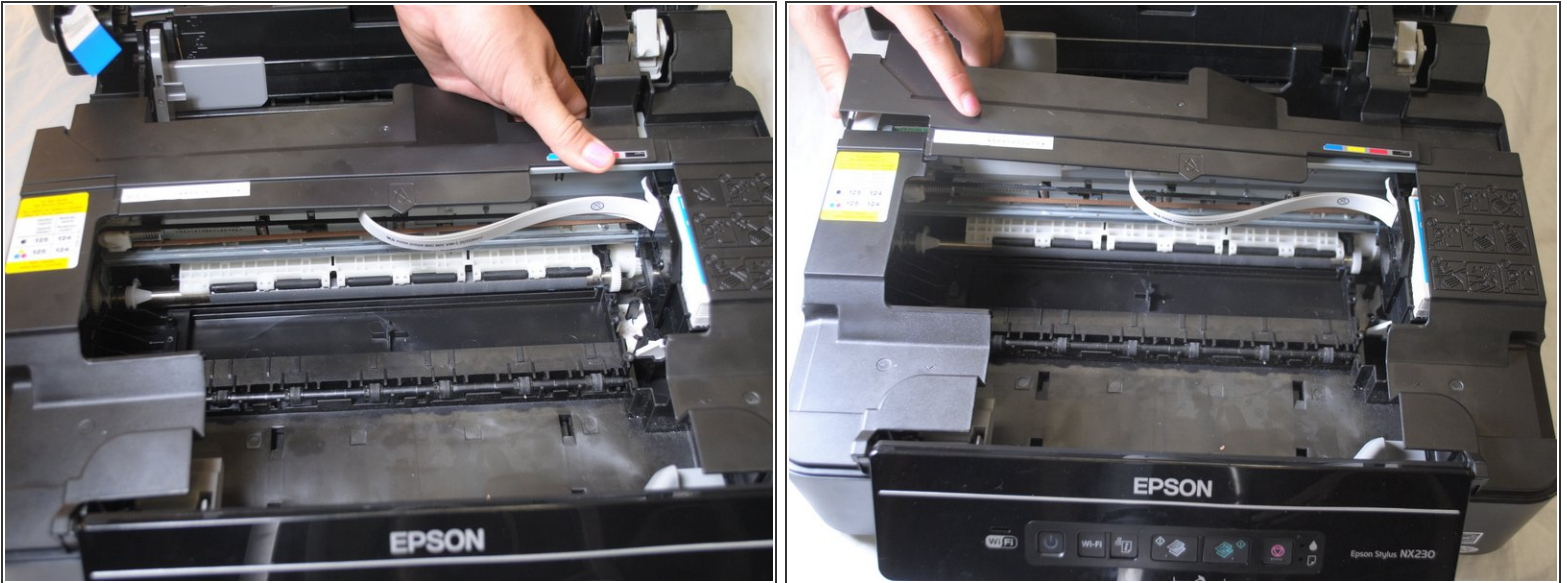
- Flip and remove the top of the printer up so that you can see the inside.
 - There is a white strip in the top right corner of the printer called the ribbon cable.
- ⚠ Make sure that the ribbon cable does not detach from the printer to prevent damaging the connection.

Step 4



- Align the printer so the front button panel faces to the right.
 - Remove the 3mm Phillips #2 screw on the side of the printer in the top left corner.
- i** Store the screw in a safe place so you can access it later.

Step 5



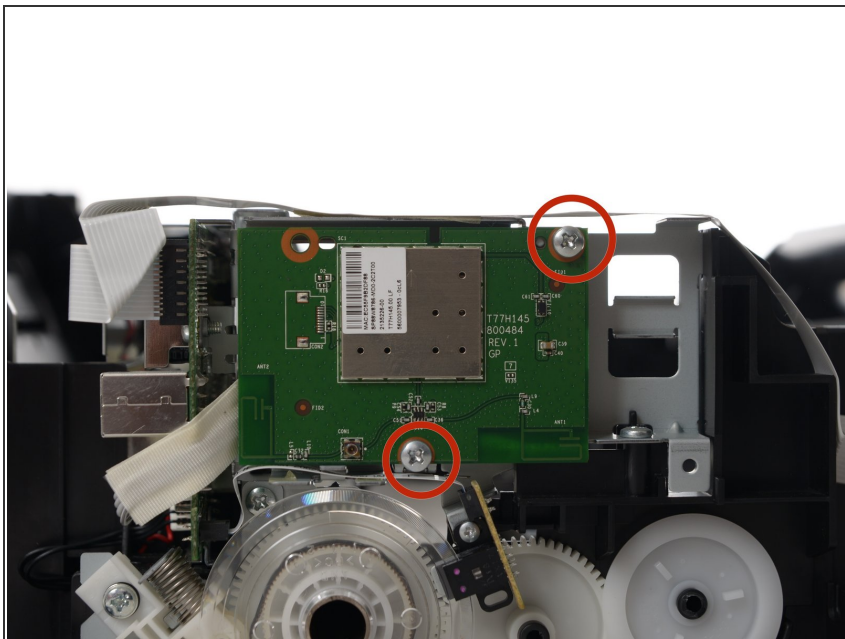
- Take the right side of the bar of plastic that runs across the top of the inside of the printer and push it towards the left side of the printer.
- Take the left side of the bar and push it to the left and then to the right.

Step 6



- Using your hands, detach the side panel from the printer.
- ⓘ Take extra care with the locking mechanisms, which help keep the side panel on the printer.
- You may need to use the plastic opening tools to pry apart the locking mechanisms.

Step 7



- Remove the two 3mm Phillips #2 screws attaching motherboard to the printer.
- ❗ Store the screws in a safe place so you can access them later.
- ❗ The motherboard can now be removed from the printer.

To reassemble your device, follow these instructions in reverse order.