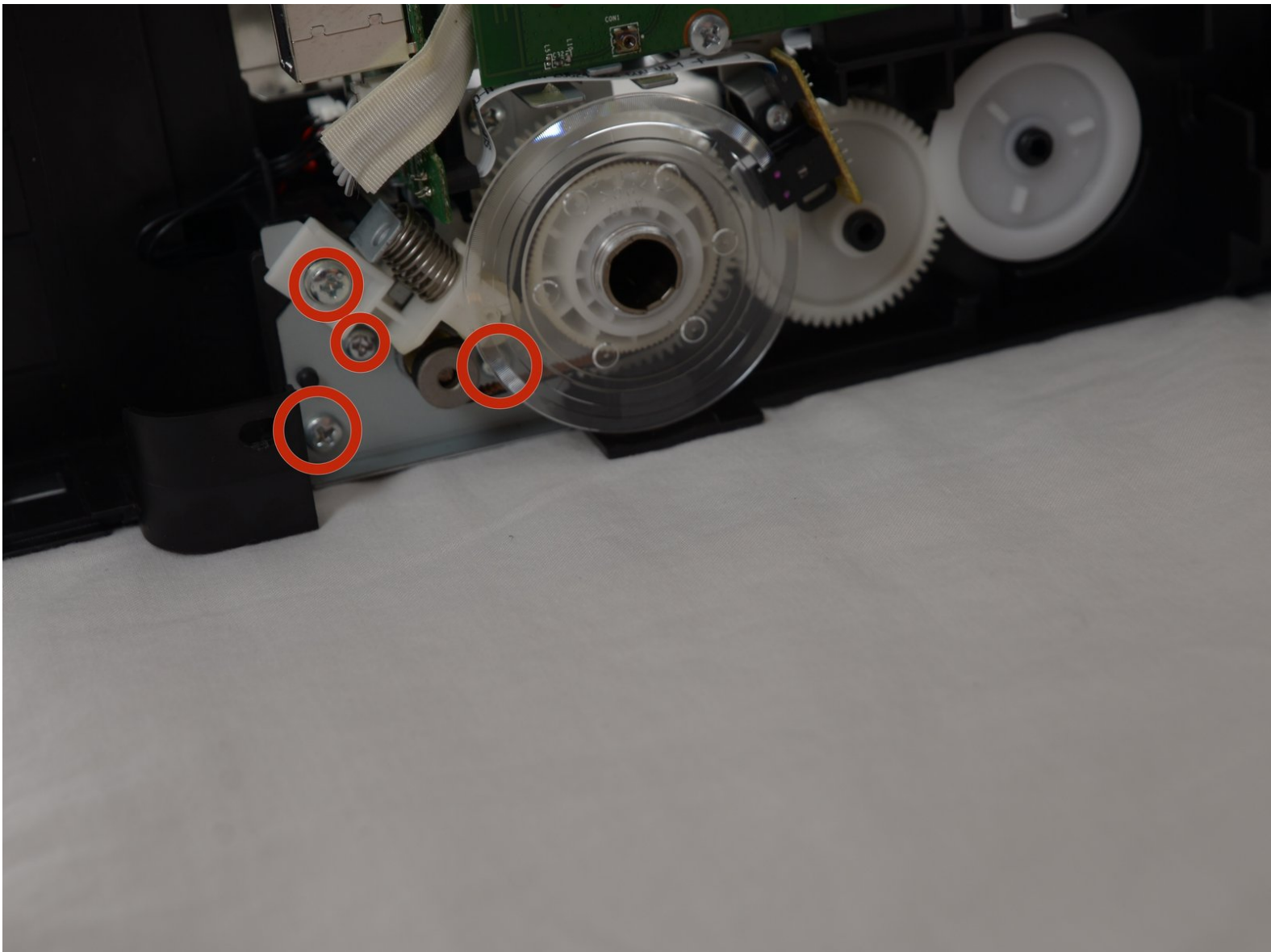




Epson Stylus NX230 Motor Replacement

Replace the motor that powers the printing of papers on your Epson Stylus NX230 Printer.

Written By: Kimberly Pugel



INTRODUCTION

The motor of the printer supplies the motion to the papers as they are fed into the machine and then out of the machine with the newly printed material. The motor may stop functioning due to damage or faulty wiring, preventing the printing of any documents.




TOOLS:

- [Phillips #2 Screwdriver](#) (1)
 - [iFixit Opening Tools](#) (1)
-


Step 1 — Motherboard



 Check to make sure the printer is unplugged to prevent electric shock.

Step 2



- Align your printer so that the front buttons face to the right.
- Remove the 3mm Phillips #2 screw in the hole in the top left corner. This screw attaches the side panel to the printer.
-  Store the screws in a safe place so you can access them later.

This document was generated on 2019-09-18 03:15:23 PM (MST).

Step 3



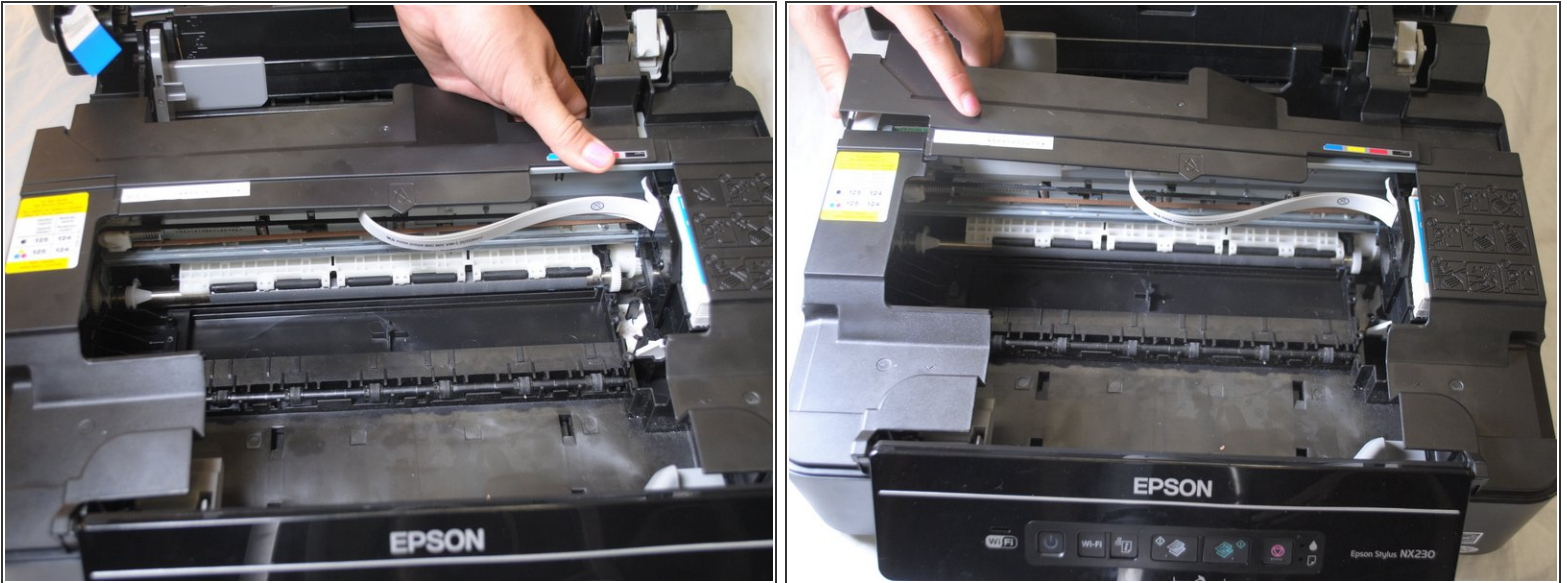
- Flip and remove the top of the printer up so that you can see the inside.
 - There is a white strip in the top right corner of the printer called the ribbon cable.
- ⚠ Make sure that the ribbon cable does not detach from the printer to prevent damaging the connection.

Step 4



- Align the printer so the front button panel faces to the right.
 - Remove the 3mm Phillips #2 screw on the side of the printer in the top left corner.
- ⓘ Store the screw in a safe place so you can access it later.

Step 5



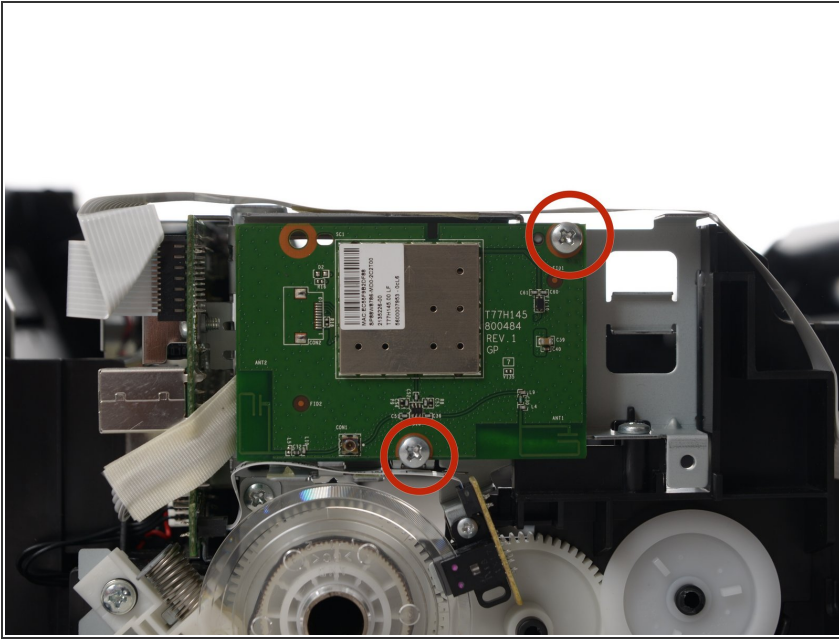
- Take the right side of the bar of plastic that runs across the top of the inside of the printer and push it towards the left side of the printer.
- Take the left side of the bar and push it to the left and then to the right.

Step 6



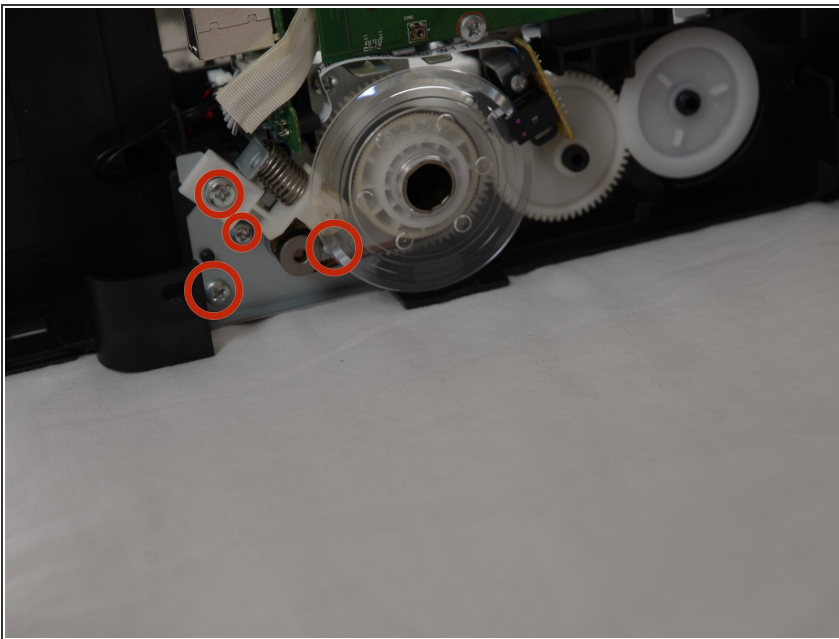
- Using your hands, detach the side panel from the printer.
- ⓘ Take extra care with the locking mechanisms, which help keep the side panel on the printer.
- You may need to use the plastic opening tools to pry apart the locking mechanisms.

Step 7



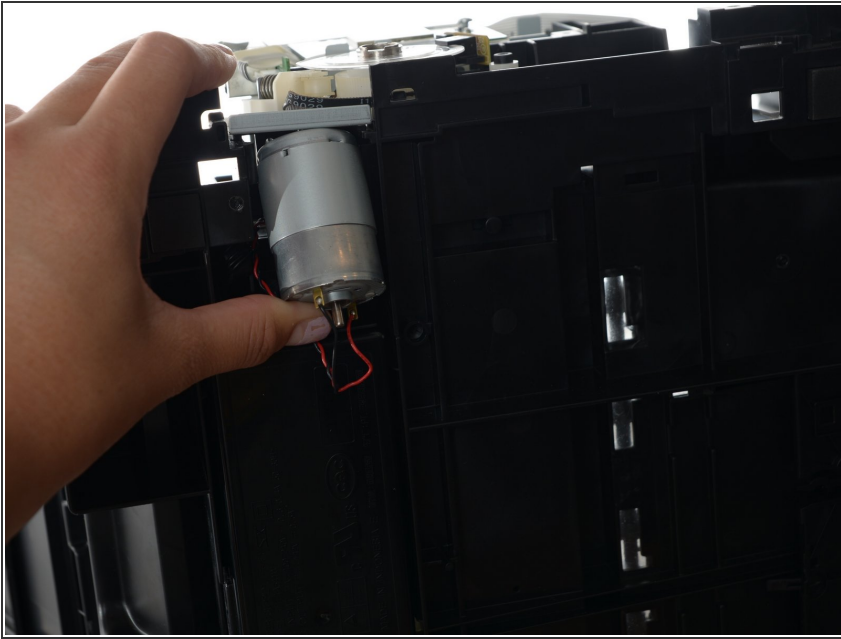
- Remove the two 3mm Phillips #2 screws attaching motherboard to the printer.
- ① Store the screws in a safe place so you can access them later.
- ① The motherboard can now be removed from the printer.

Step 8 — Motor



- Remove the four 3mm Phillips #2 screws attaching the motor to the printer.
- ① Store the screws in a safe place so you can access them later.

Step 9



- Place the printer on its side so that the motherboard's location is facing up.
- Push the motor up and out of the hole that it is in.
- ⓘ The motor will slide out of the hole at the top after that.

To reassemble your device, follow these instructions in reverse order.