



# Epson Stylus NX230 Scanner Motor Replacement

Replace the motor that powers the scanning mechanism on your Epson Stylus NX230 printer.

Written By: Kimberly Pugel



---

## INTRODUCTION

The scanner motor powers the physical movement of the scanning mechanism. This mechanism moves across an entire document, copying its contents, so that the printer can scan, fax, and/or print a copy of the original document. This motor may stop working due to a broken fuse or faulty connection and ultimately may need to be replaced.



### TOOLS:

- [iFixit Opening Tools](#) (1)
  - [Phillips #2 Screwdriver](#) (1)
-

## Step 1 — Scanner Motor



- ⚠ Check that the printer is unplugged to prevent shock.
- Turn the printer so the front buttons are facing away from you.

## Step 2



- Locate the 3mm Phillips #0 screw in the top left corner of the printer.
- Remove the screw using a Phillips head screwdriver.
- ⓘ Store the screw in a safe place where you can access them later.

## Step 3



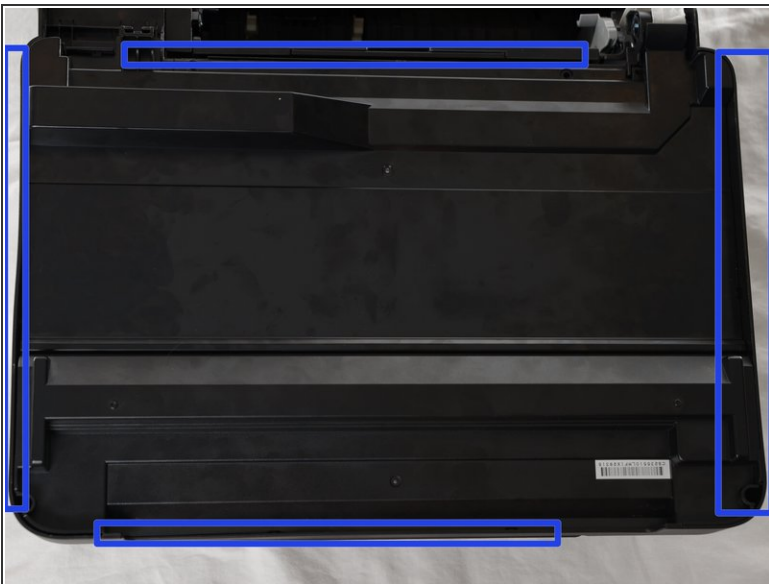
- Flip the top of the printer up so that you can see the inside of the printer.
- There is a white ribbon cable in the right top corner of the printer.
- Make sure that the white ribbon does not come detached from the right side of the printer.

## Step 4



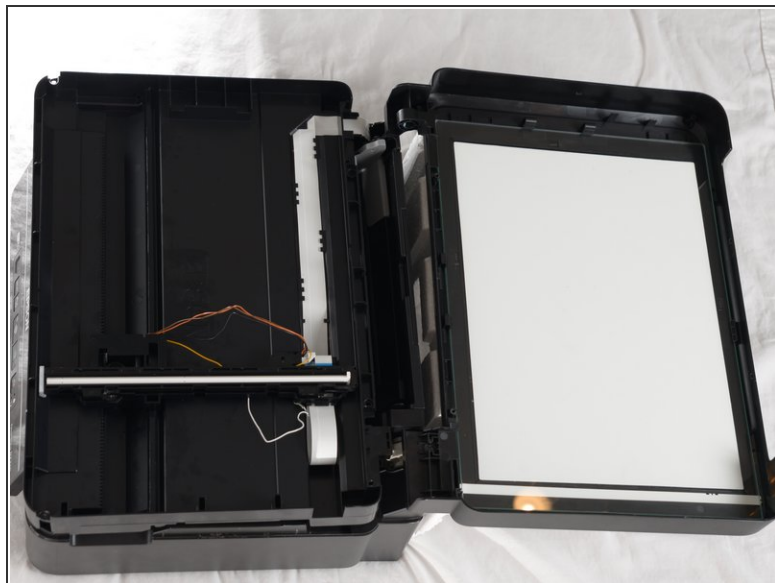
- Lay the scanner face up so you can access the under side, and place something, such as a piece of Styrofoam, underneath of it so that the white tape does not become detached.
- Locate the four 3mm Phillips #2 screws along the edge, and remove all of them.
- ⓘ Store the screws in a safe place where you can access them later.

## Step 5



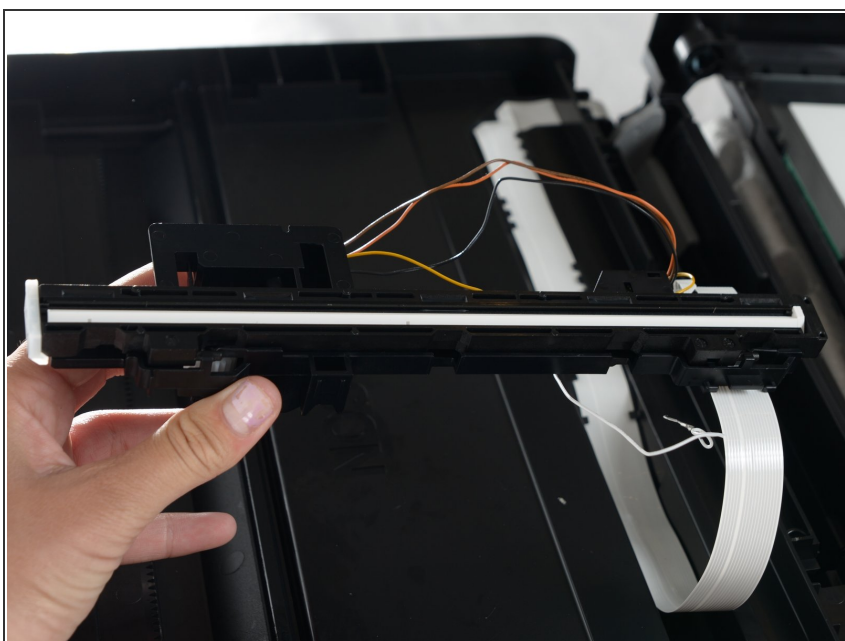
- Locate the seam on between outer shell of the printer and the inside of the printer.
- Starting from the top of the printer, use the plastic opening tool to slowly pry the scanner apart along the seam.

## Step 6



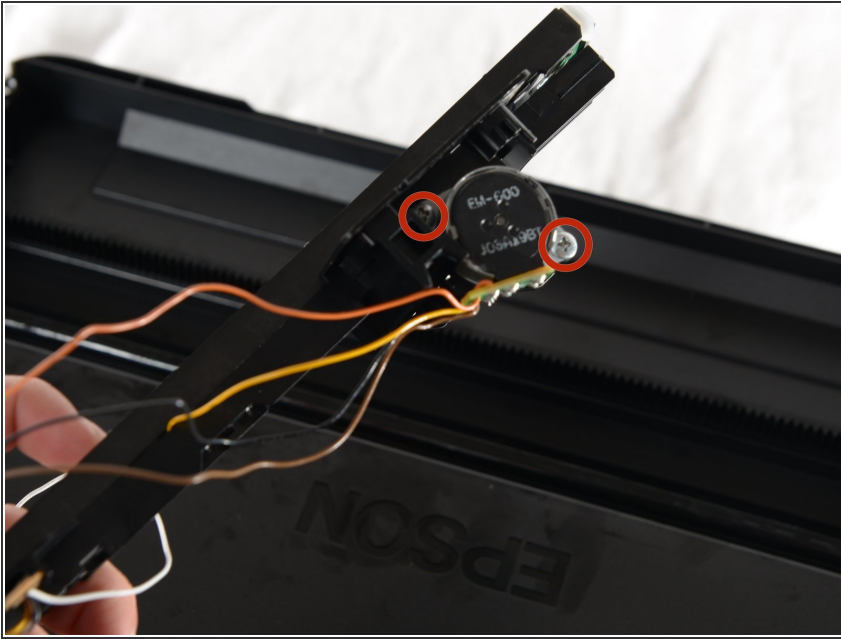
- Detach the bottom of the scanner.
  - Flip the bottom of the scanner over so that it rests on top of the printer.
- i** This gives you access to the motor.

## Step 7



- Gently lift the scanner bar in order to remove it from the scanner.
- Detach the white ribbon cable from the scanner bar.

## Step 8



- Remove the two 3mm Phillips #2 screws on the underside of the scanner bar attached to the silver motor.
- Remove the motor from the scanner bar by gently pulling the motor upwards.

To reassemble your device, follow these instructions in reverse order.