



# Epson Stylus Photo 1400 Housing Replacement

This guides the user in removing the bottom, side and top housings of the printer.

Written By: Larry Huang



---

# INTRODUCTION

To get to the inside parts of the printer, the housing components must come off.



## TOOLS:

- [Flathead Screwdriver](#) (1)
  - [Phillips #2 Screwdriver](#) (1)
  - [iFixit Opening Tools](#) (1)
-

## Step 1 — Housing



- Turn off the printer.
- Disconnect all data connections coming into the printer such as USB, network cables, firewire, etc. as well as removing the power cord.

## Step 2



- Locate the IEEE cover in the back.
- Gently slide cover to the right to unlatch then pull to remove it.



### Step 3



- Using a #2 Phillips screwdriver, remove the four 10mm screws shown.
- Remove the 6mm screw that holds the rear housing in place.

### Step 4



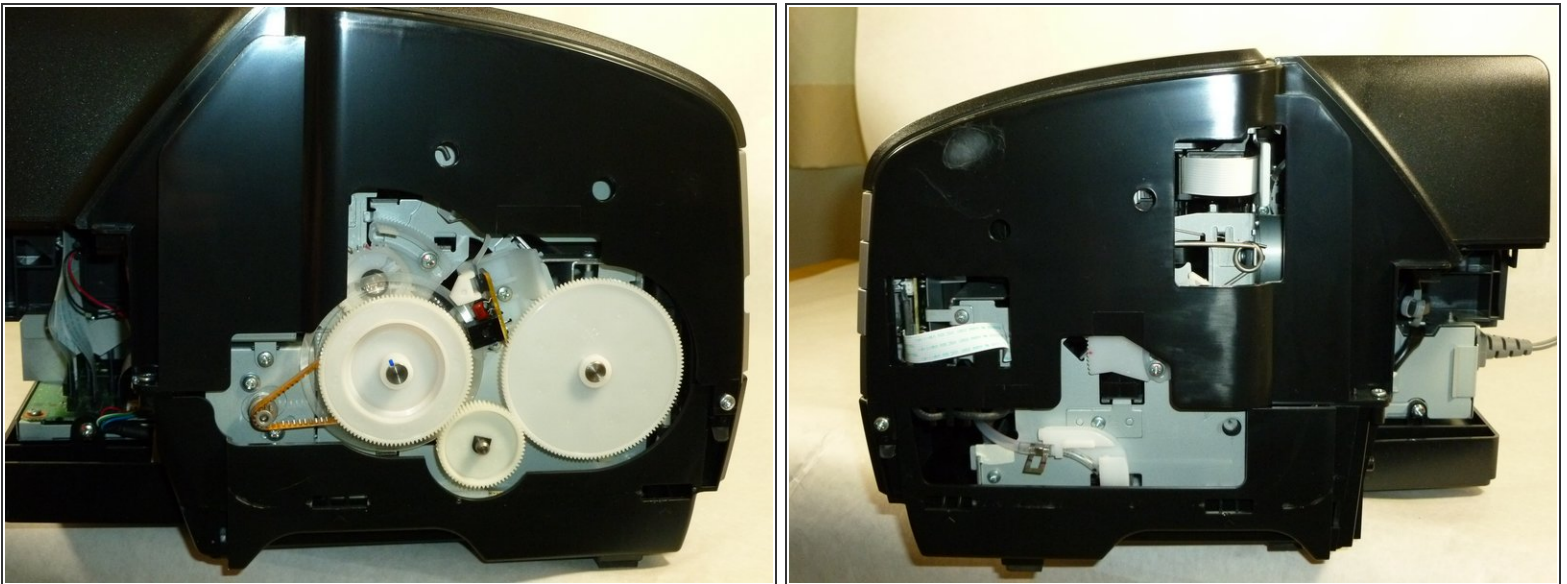
- Remove the rear housing by pulling it backwards.

## Step 5



- Insert the flathead screwdriver or plastic pry tool into the cutouts of the lower housing.
- Release the two tabs of the side housing by lifting the tool in an upward motion
- Remove the side housing by pulling it outwards.

## Step 6



- ⓘ Both side housings are attached by the same type of mechanism.
- Using the same method, remove the other side housing.

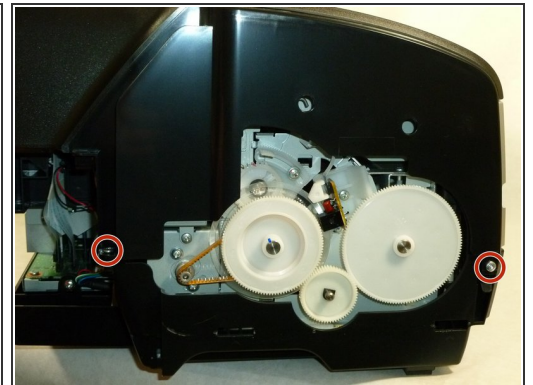
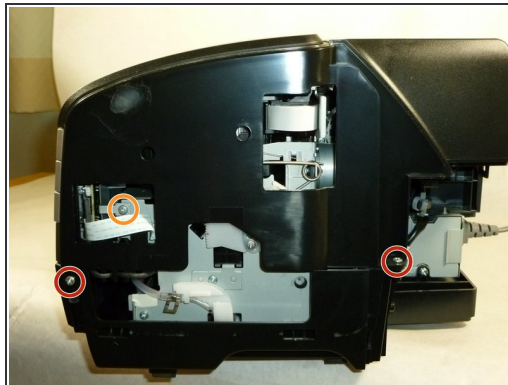


## Step 7



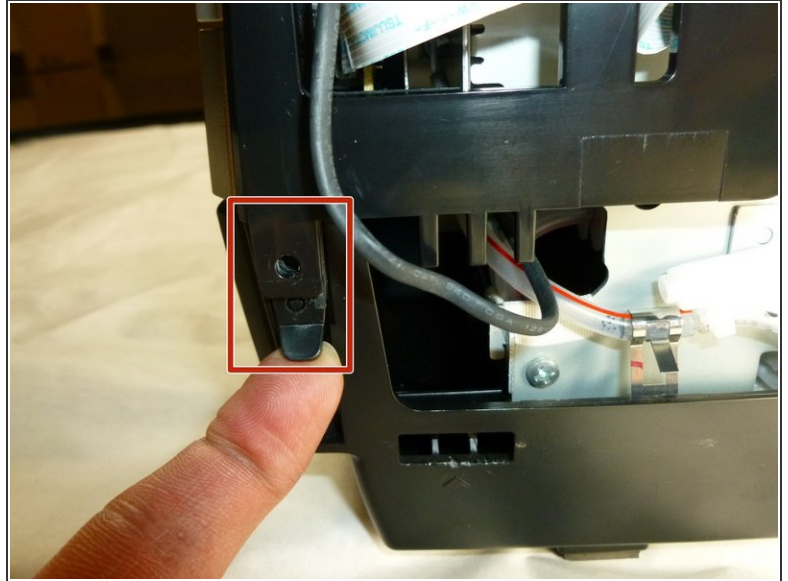
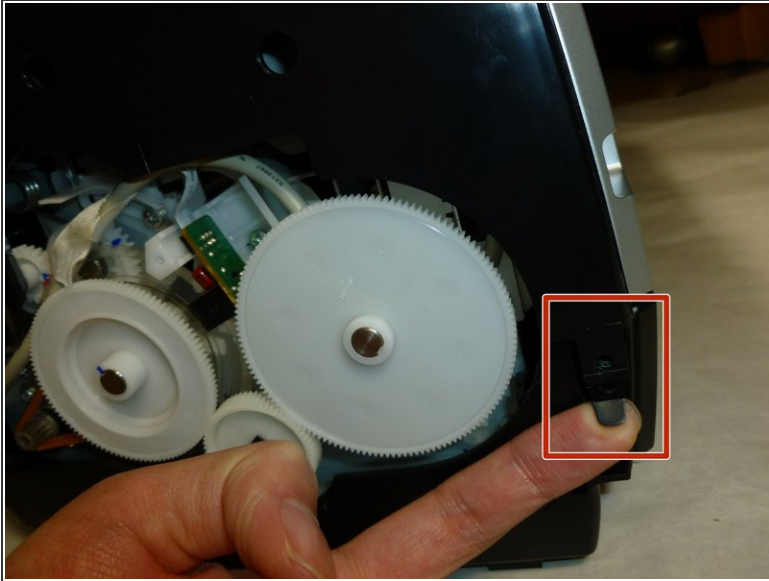
- Lift the paper support.
- Open the printer cover and front cover.

## Step 8



- Remove the four 10 mm Phillips #2 screws from the sides of the printer.
- Remove the three 6mm Phillips #2 screws.

## Step 9



- Detach the tabs from the pins on each side by pulling it outwards.

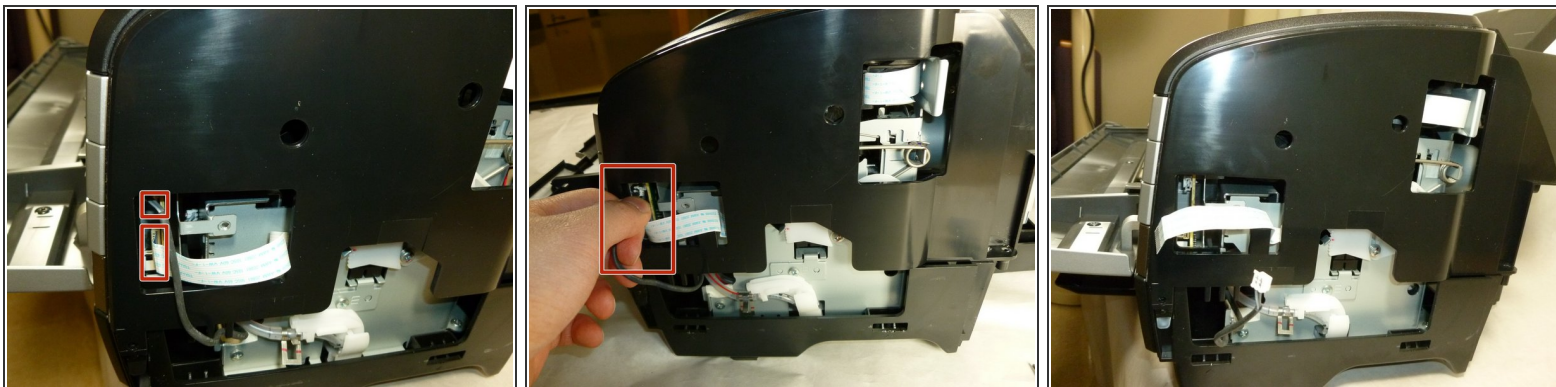
## Step 10



- Remove the two 10 mm Phillips #2 screws on the front of the printer.

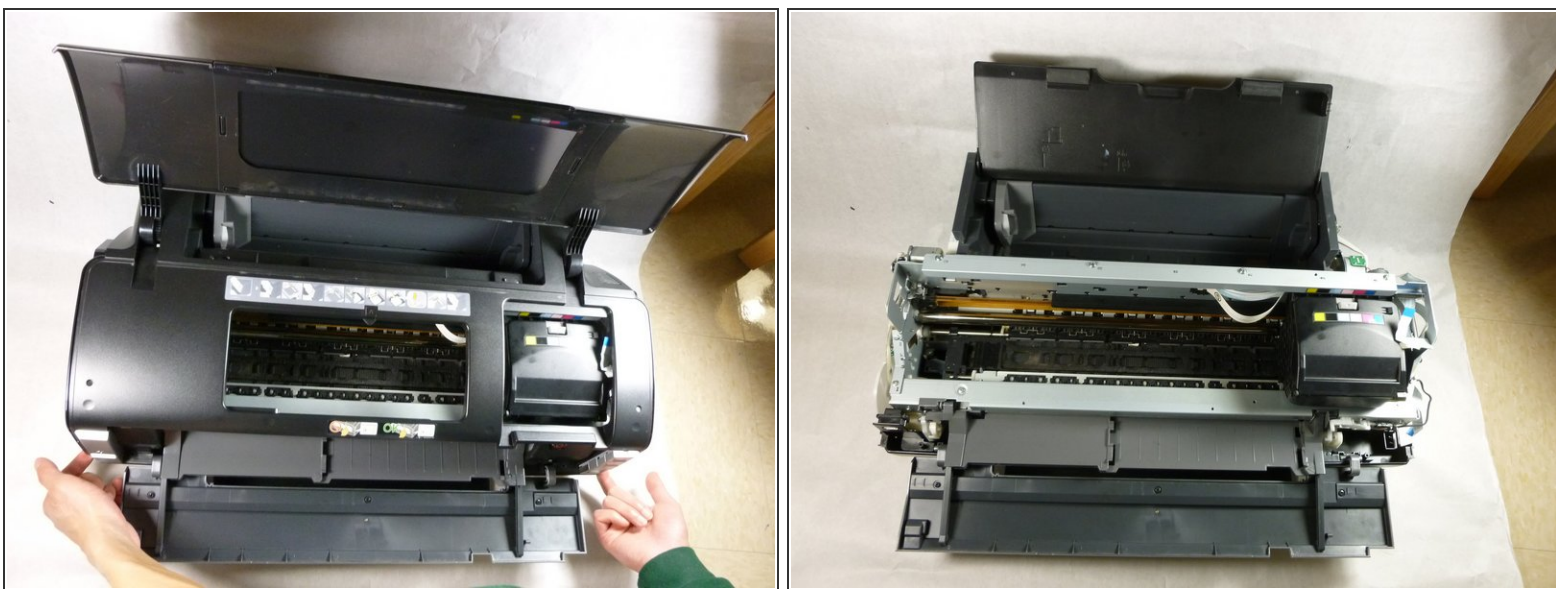


## Step 11



- Disconnect the cable on the side by carefully pulling it outwards.
- ⓘ You may need to gently rock the cable up and down while pulling.

## Step 12



- Remove the upper housing by lifting it upwards.
- ⓘ It's easier to lift the housing by gripping it from the bottom.

To reassemble your device, follow these instructions in reverse order.