



# Epson Stylus Photo 1400 Paper Eject Frame Assembly Replacement

How to remove the Paper EJ Frame Assembly for Epson Stylus 1400.

Written By: Larry Huang



## INTRODUCTION

This guide shows how to remove the paper eject frame assembly. Constant paper jams might be caused by a faulty paper eject frame assembly. This process requires the knowledge of how to use basic tools.



### TOOLS:

- [Flathead Screwdriver](#) (1)
- [Phillips #2 Screwdriver](#) (1)



### PARTS:

- [Paper EJ assy](#) (1)

## Step 1 — Housing



- Turn off the printer.
- Disconnect all data connections coming into the printer such as USB, network cables, firewire, etc. as well as removing the power cord.

## Step 2



- Locate the IEEE cover in the back.
- Gently slide cover to the right to unlatch then pull to remove it.



### Step 3



- Using a #2 Phillips screwdriver, remove the four 10mm screws shown.
- Remove the 6mm screw that holds the rear housing in place.

### Step 4



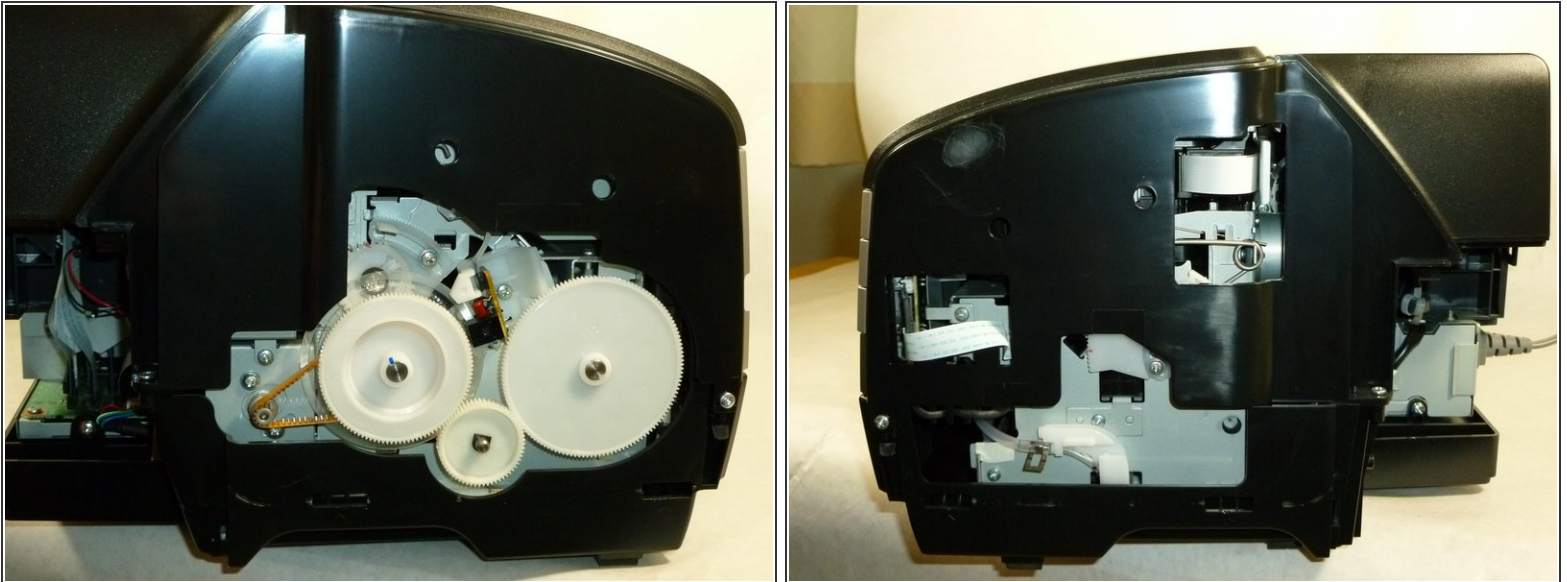
- Remove the rear housing by pulling it backwards.

## Step 5



- Insert the flathead screwdriver or plastic pry tool into the cutouts of the lower housing.
- Release the two tabs of the side housing by lifting the tool in an upward motion
- Remove the side housing by pulling it outwards.

## Step 6



- ① Both side housings are attached by the same type of mechanism.
- Using the same method, remove the other side housing.

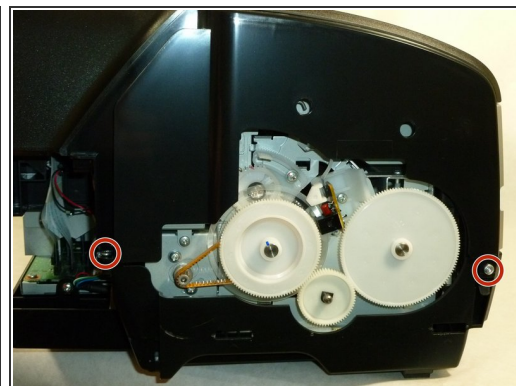
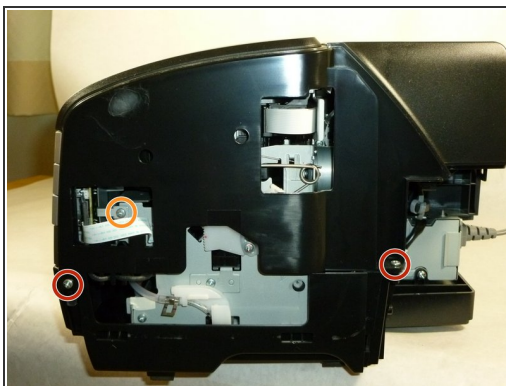


## Step 7



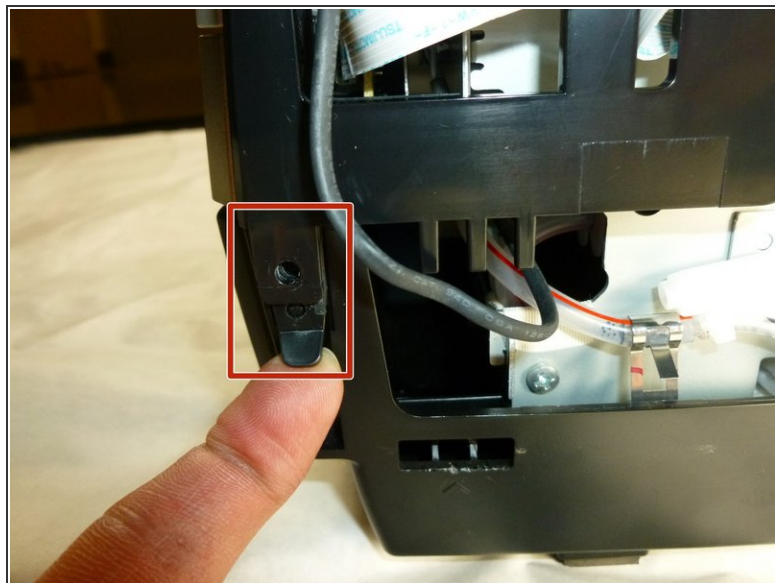
- Lift the paper support.
- Open the printer cover and front cover.

## Step 8



- Remove the four 10 mm Phillips #2 screws from the sides of the printer.
- Remove the three 6mm Phillips #2 screws.

## Step 9



- Detach the tabs from the pins on each side by pulling it outwards.

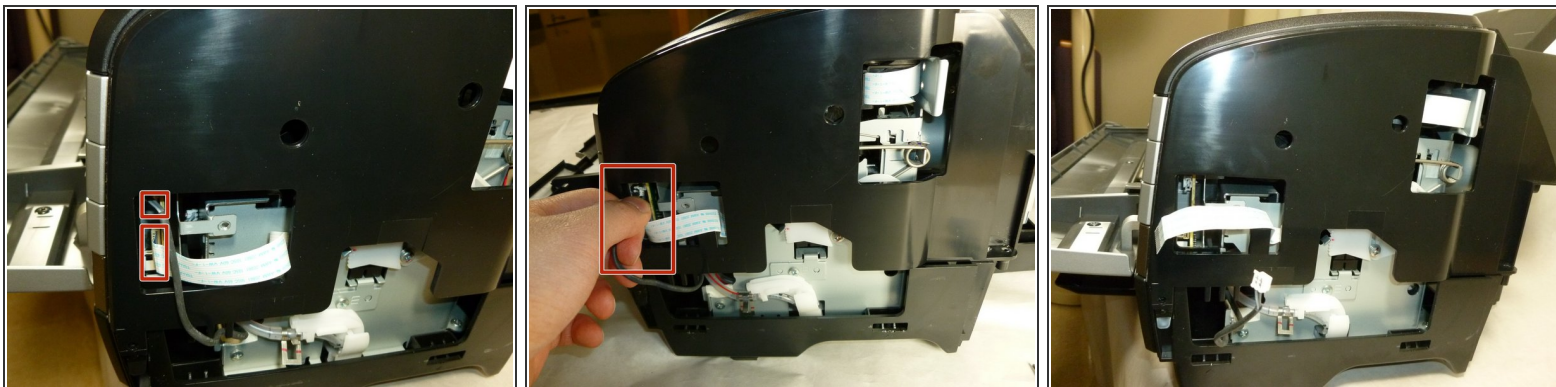
## Step 10



- Remove the two 10 mm Phillips #2 screws on the front of the printer.

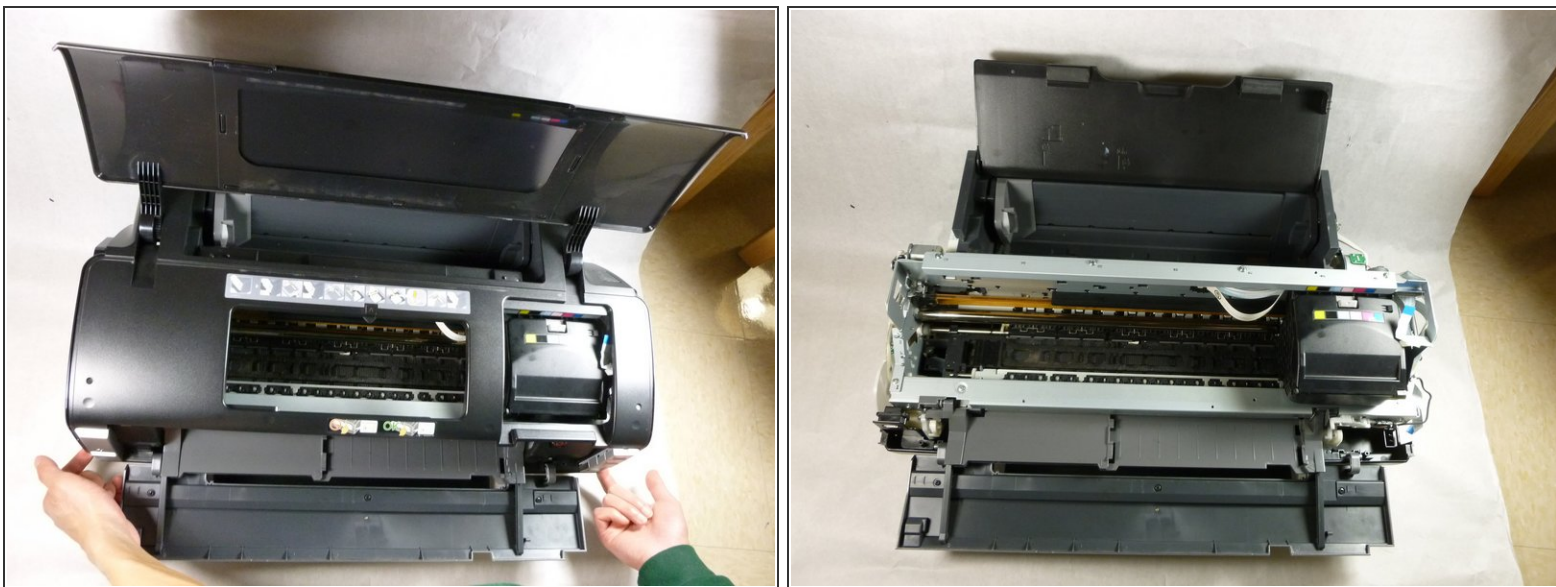


## Step 11



- Disconnect the cable on the side by carefully pulling it outwards.
- ⓘ You may need to gently rock the cable up and down while pulling.

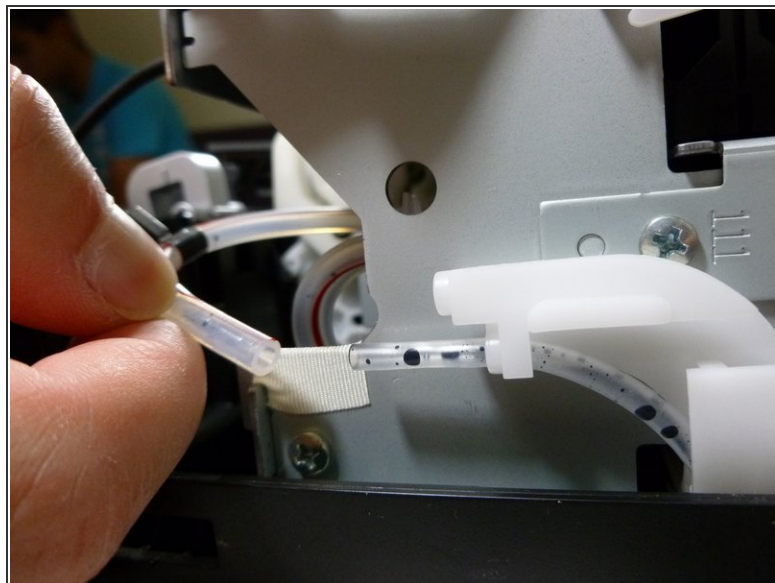
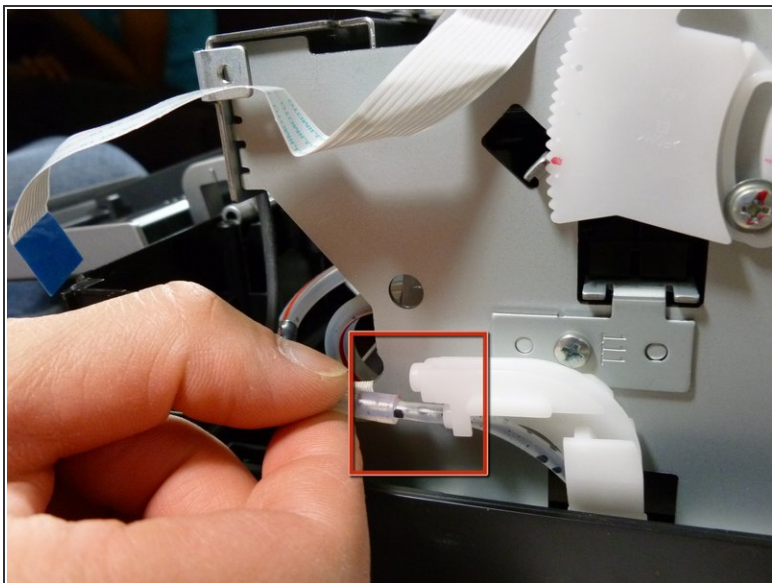
## Step 12



- Remove the upper housing by lifting it upwards.
- ⓘ It's easier to lift the housing by gripping it from the bottom.

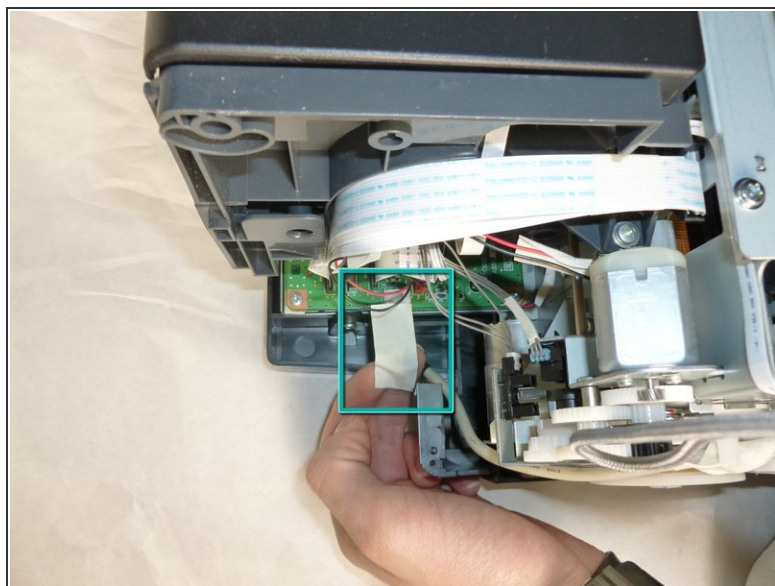
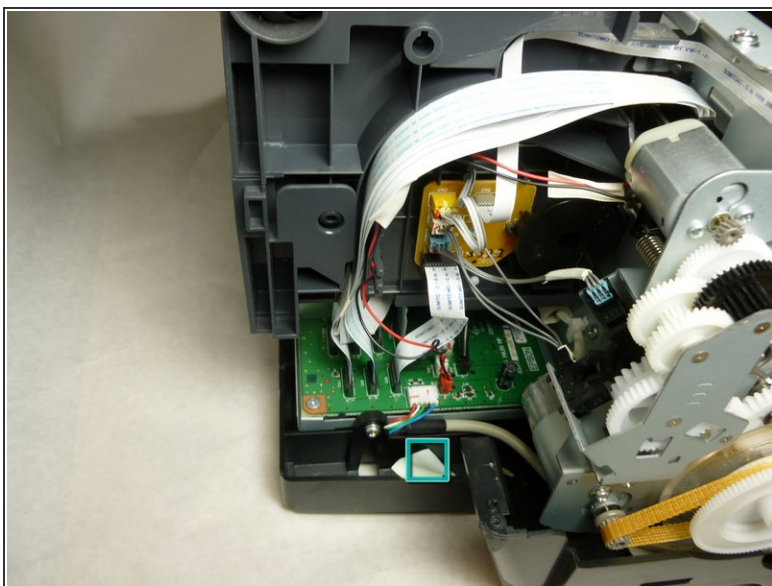


## Step 13 — Paper Eject Frame Assembly



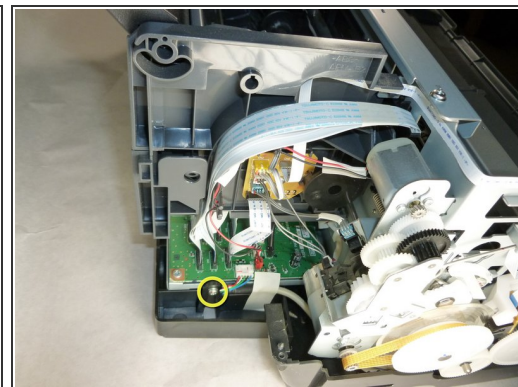
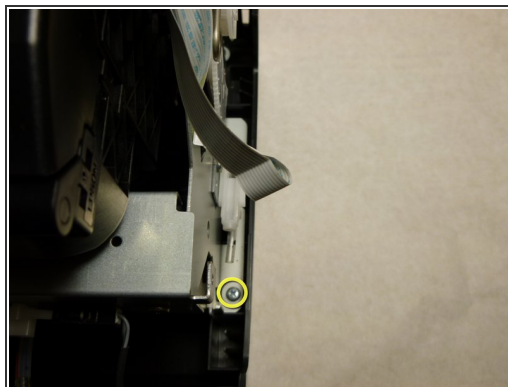
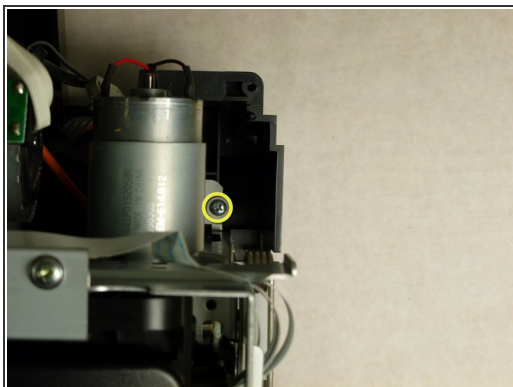
- Hold the ink tube and draw out the waste ink tube by pulling on both tubes in opposite directions.

## Step 14



- Remove the acetate tape that secure the connector cable.

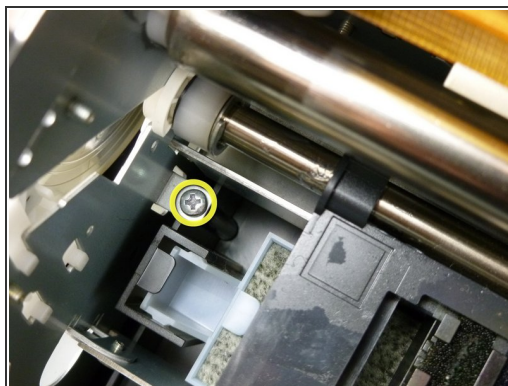
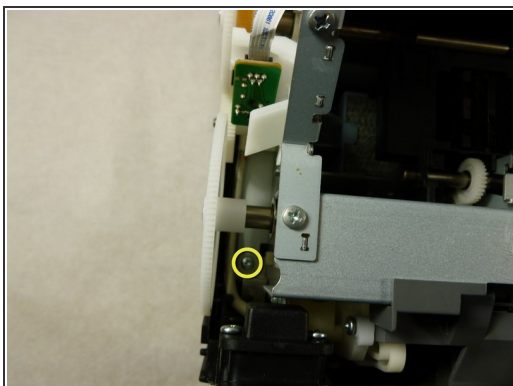
## Step 15



**i** There are six screws that secure the printer mechanism.

- Using the #2 Phillips screwdriver, remove the three 10mm screws shown.

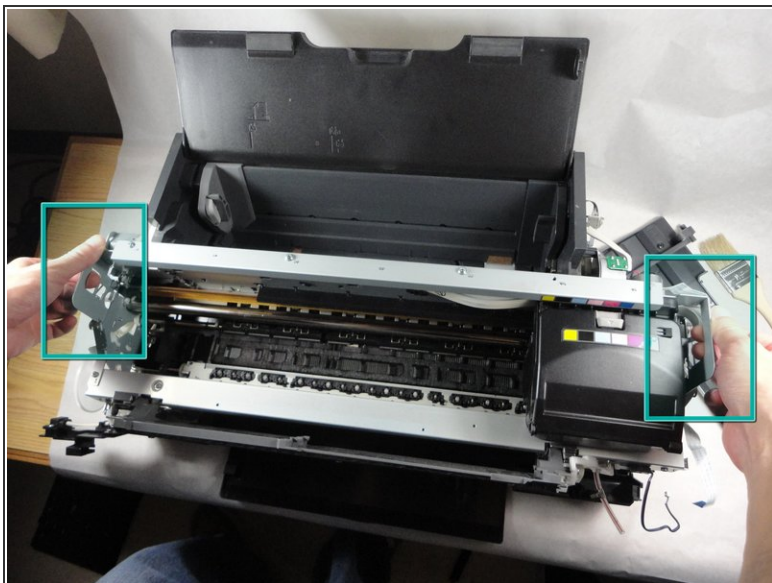
## Step 16



- Using the #2 Phillips screwdriver, remove the last three 10mm screws securing the printer mechanism.

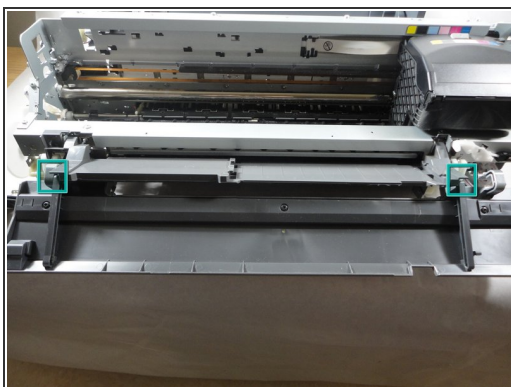


## Step 17



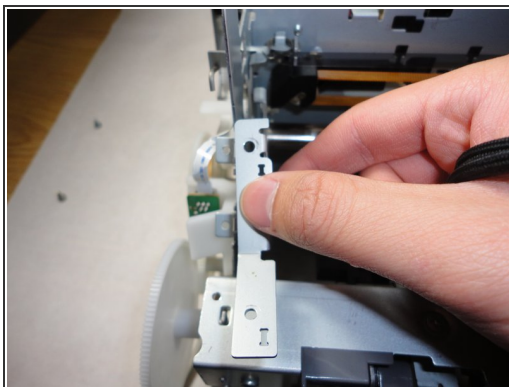
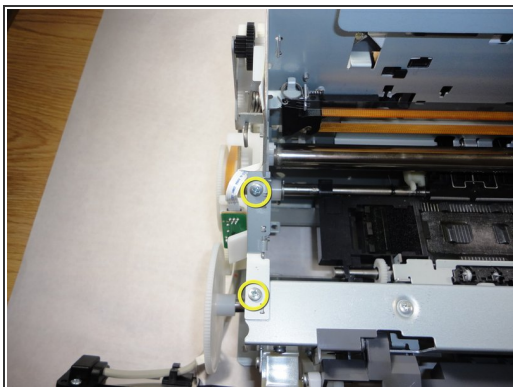
- Remove printer mechanism from lower housing by holding the handles and lifting it upwards.

## Step 18



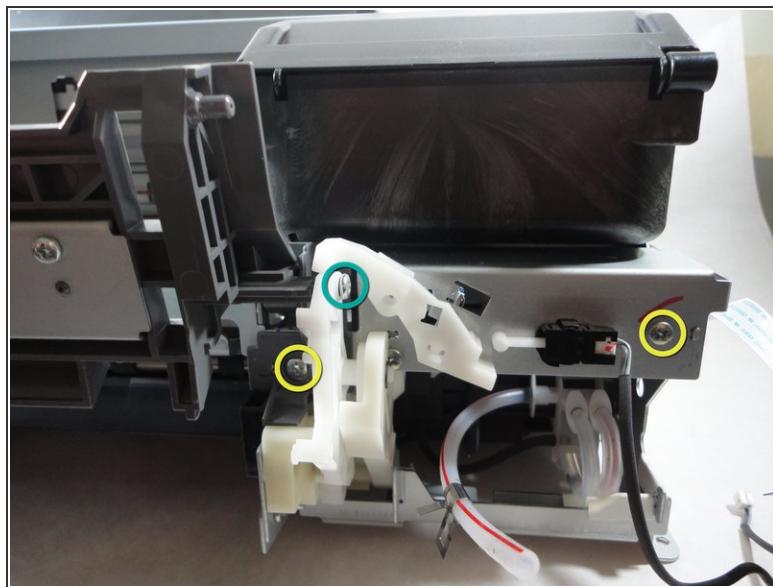
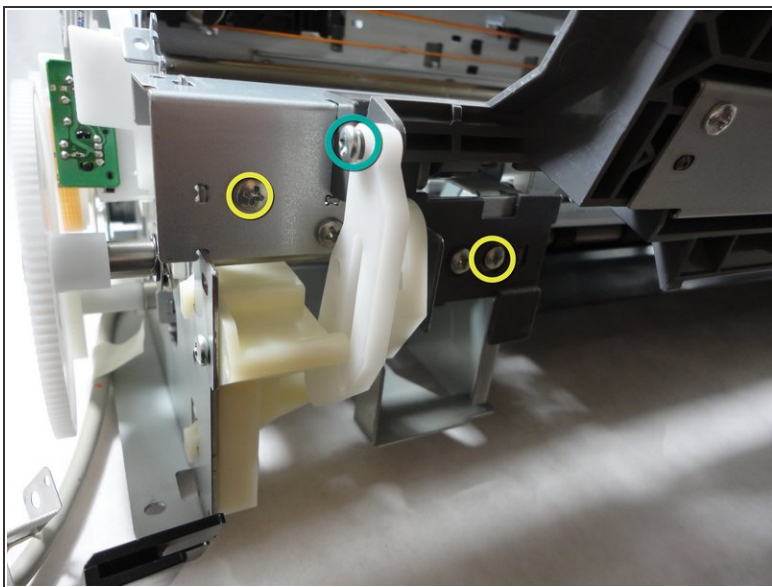
- Remove the CD-R unit housing by releasing the two attaching points to the tray base.
- Pull it outwards diagonally one side at a time.

## Step 19



- Remove the left frame support plate by removing the two 6mm screws that secure it.
- Pull it out by hand to free it.

## Step 20




- Using the #2 Phillips screwdriver, remove the four 6mm screws.
  - Remove the two 8mm screws.
- i** The screws are located on the lower sections of the printer.

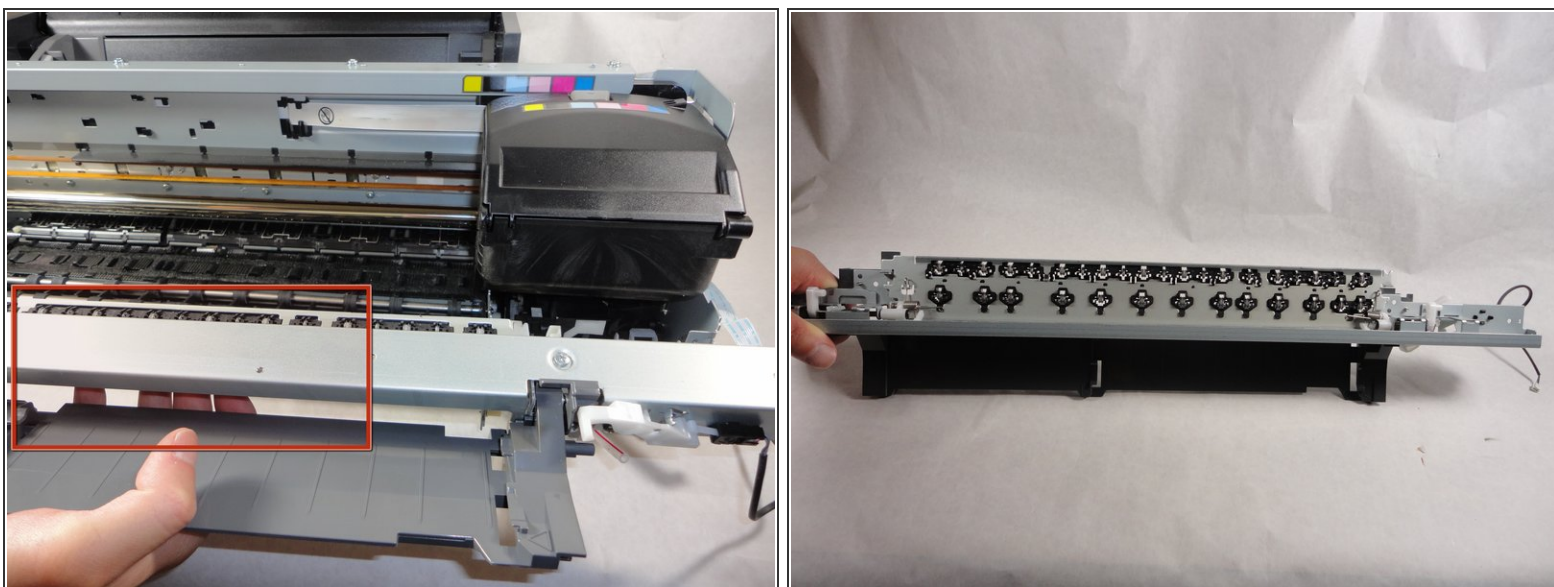


## Step 21



-  Two guide pins secure the paper EJ assy in place.
- Remove the two guide pins on the CD/DVD tray base by pulling each pin outward.

## Step 22



- Remove the paper EJ frame assy by pulling the it towards you.

To reassemble your device, follow these instructions in reverse order.