



# Epson Stylus Photo 1400 Printhead Replacement

How to replace a Print Head for Epson Stylus 1400.

Written By: Larry Huang



## INTRODUCTION

This guide shows how to replace a printhead. Consistently poor print quality even after printing and replacing ink might be caused by a faulty printhead. This process requires the knowledge of how to use basic tools.



### TOOLS:

- [Flathead Screwdriver](#) (1)
- [Phillips #2 Screwdriver](#) (1)
- [Tweezers](#) (1)



### PARTS:

- [Printhead](#) (1)

## Step 1 — Housing



- Turn off the printer.
- Disconnect all data connections coming into the printer such as USB, network cables, firewire, etc. as well as removing the power cord.

## Step 2



- Locate the IEEE cover in the back.
- Gently slide cover to the right to unlatch then pull to remove it.



### Step 3



- Using a #2 Phillips screwdriver, remove the four 10mm screws shown.
- Remove the 6mm screw that holds the rear housing in place.

### Step 4



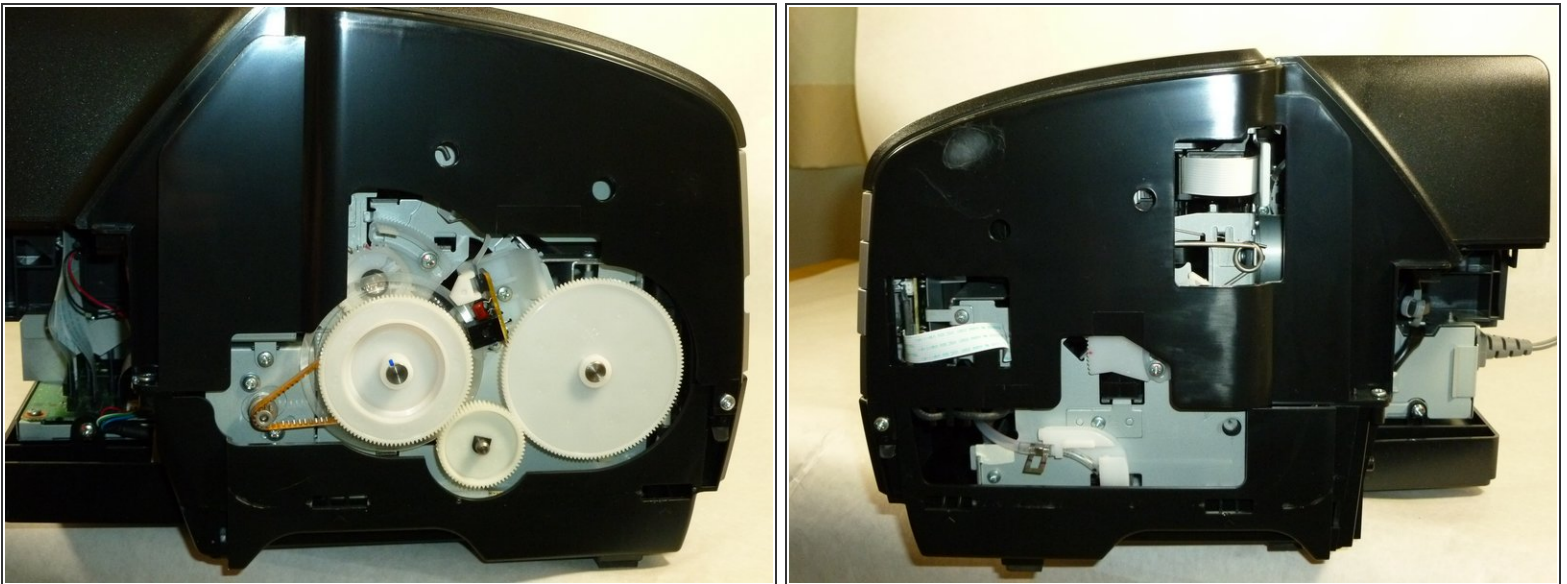
- Remove the rear housing by pulling it backwards.

## Step 5



- Insert the flathead screwdriver or plastic pry tool into the cutouts of the lower housing.
- Release the two tabs of the side housing by lifting the tool in an upward motion
- Remove the side housing by pulling it outwards.

## Step 6



- ⓘ Both side housings are attached by the same type of mechanism.
- Using the same method, remove the other side housing.

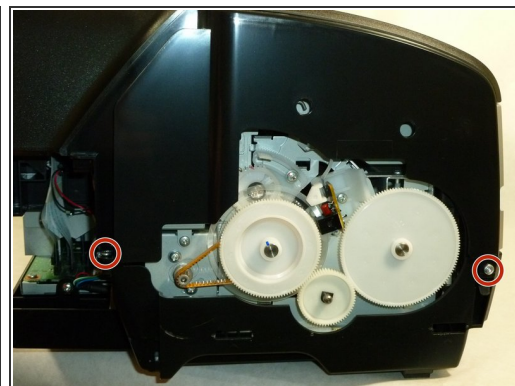
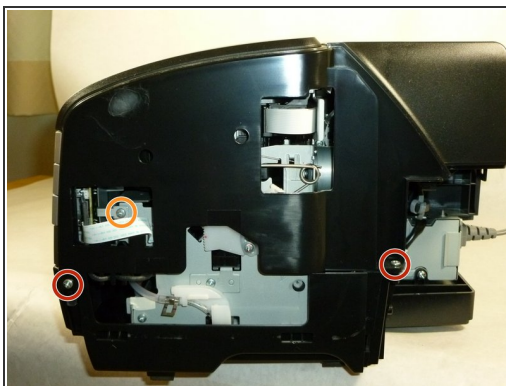


## Step 7



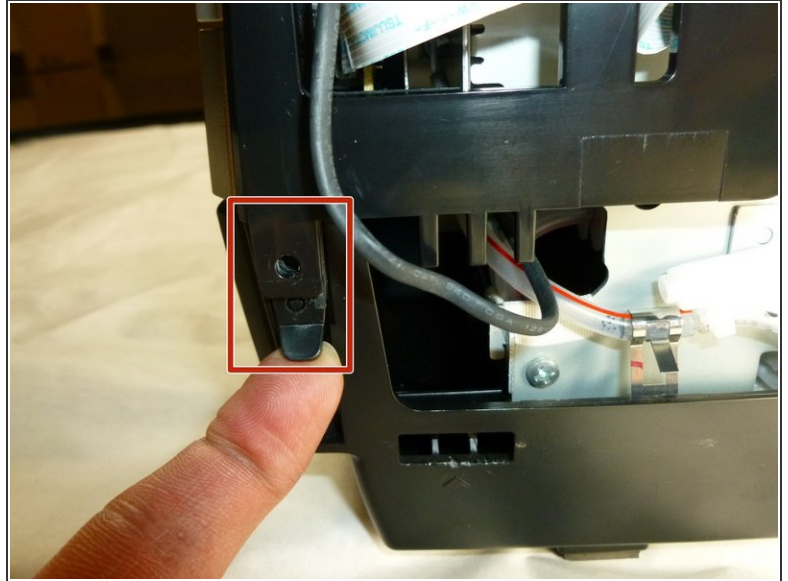
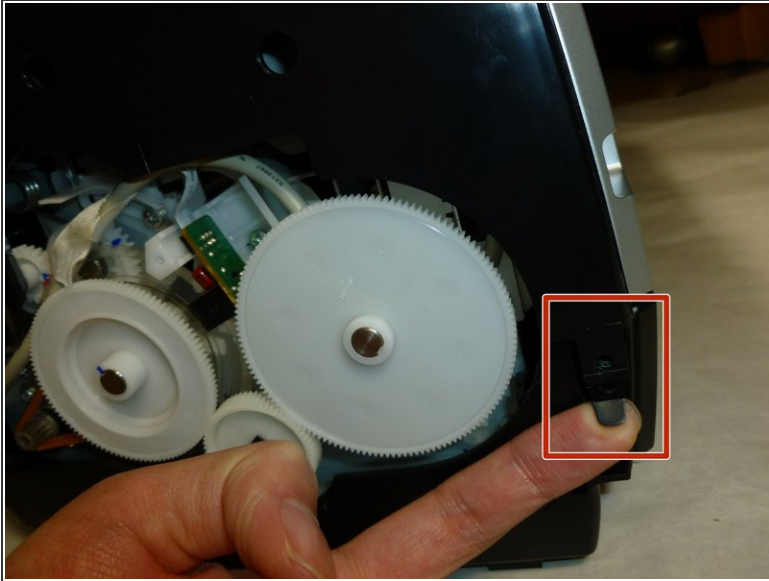
- Lift the paper support.
- Open the printer cover and front cover.

## Step 8



- Remove the four 10 mm Phillips #2 screws from the sides of the printer.
- Remove the three 6mm Phillips #2 screws.

## Step 9



- Detach the tabs from the pins on each side by pulling it outwards.

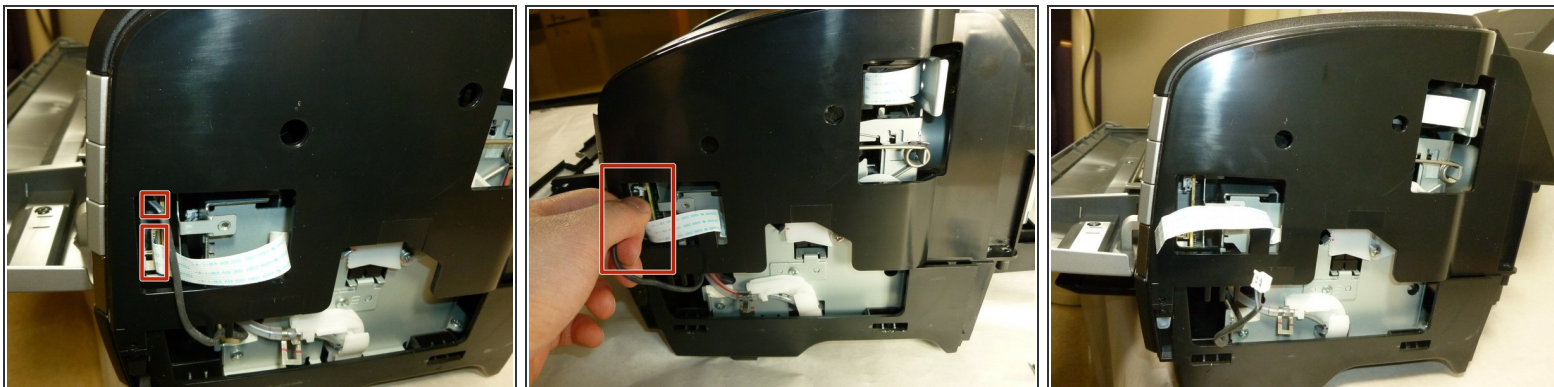
## Step 10



- Remove the two 10 mm Phillips #2 screws on the front of the printer.

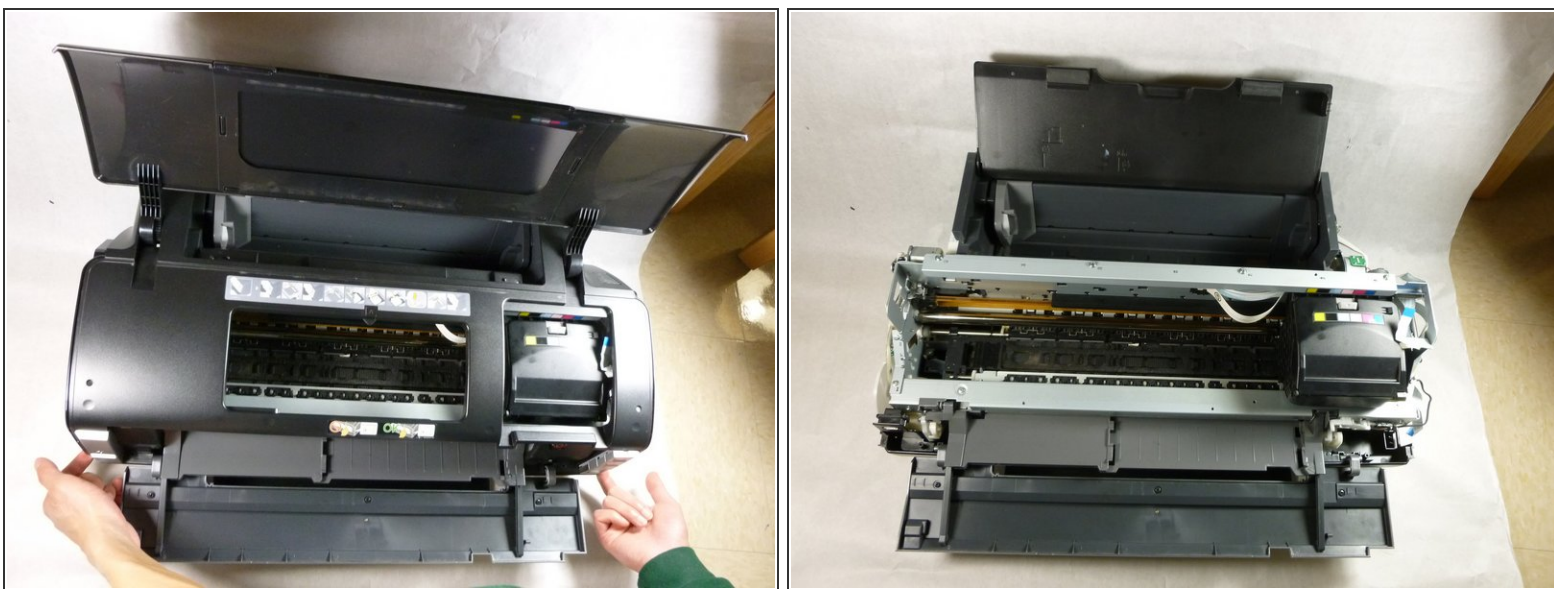


## Step 11



- Disconnect the cable on the side by carefully pulling it outwards.
- ⓘ You may need to gently rock the cable up and down while pulling.

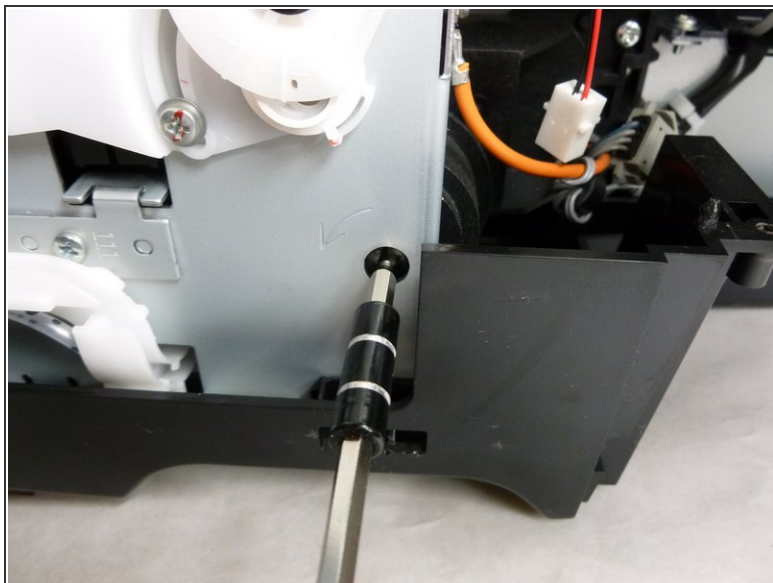
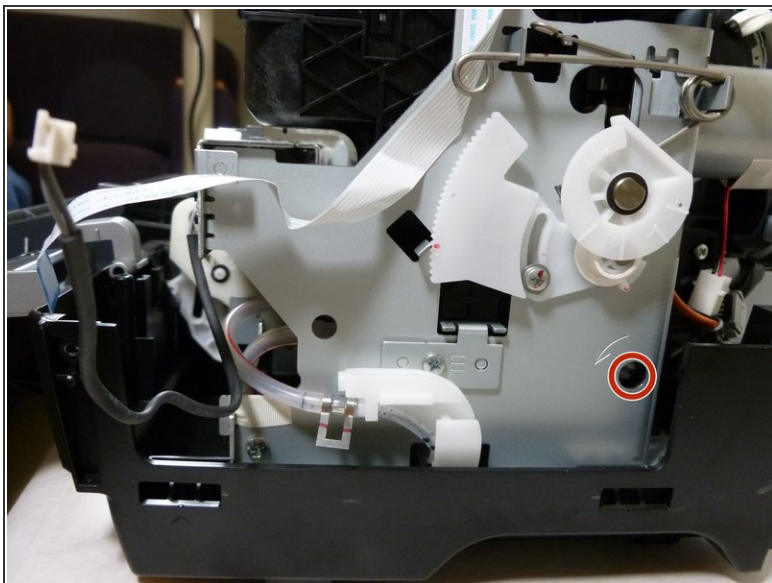
## Step 12



- Remove the upper housing by lifting it upwards.
- ⓘ It's easier to lift the housing by gripping it from the bottom.



## Step 13 — Printhead



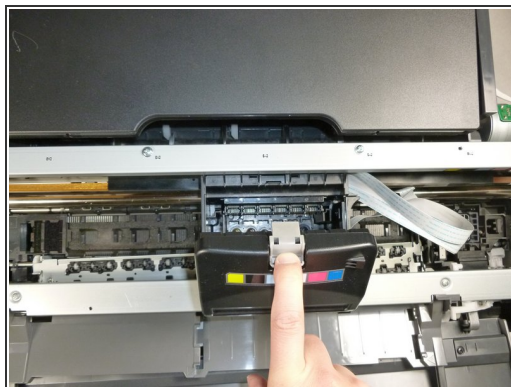
- Insert a flathead screwdriver into the hole on the right side of the frame.
- Turn the screwdriver counterclockwise until it stops.

## Step 14



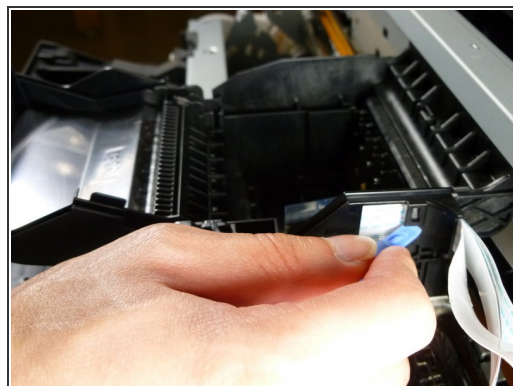
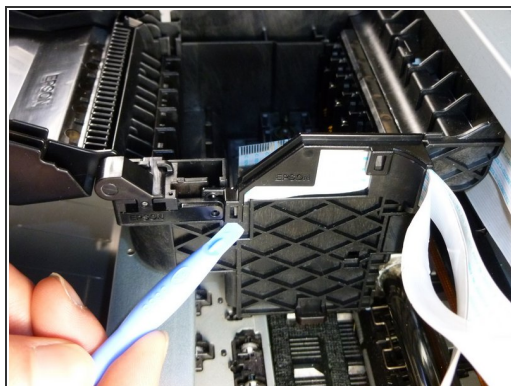
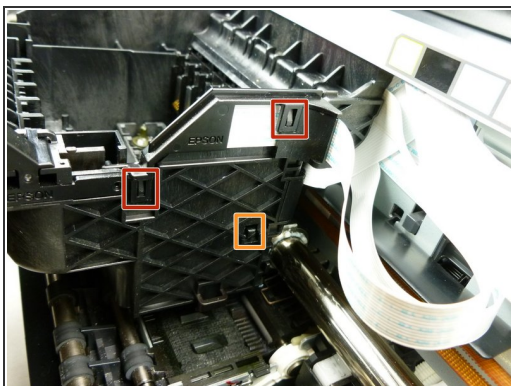
- Move the carriage unit to the center.

## Step 15



- Open the cartridge cover.
- Remove all the ink cartridges inside.

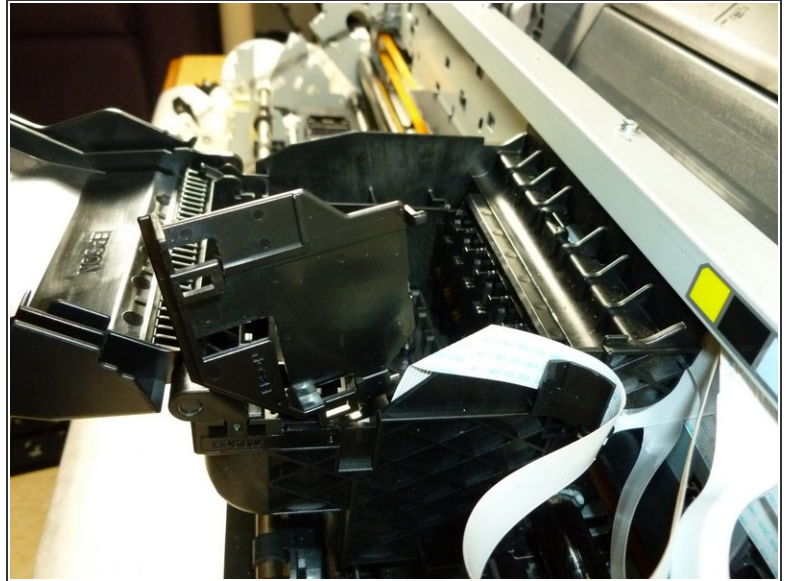
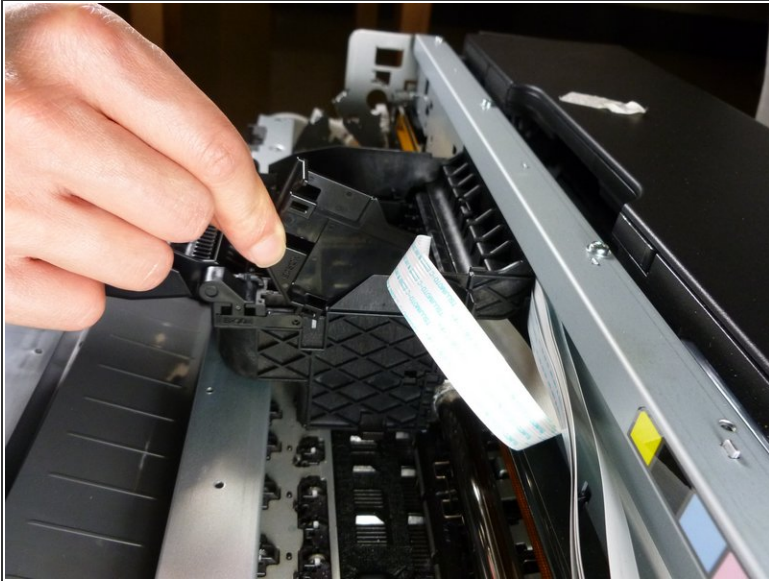
## Step 16



- Using a plastic opening tool, disengage the two upper tab on the side of the carriage unit.
- With a spudger or plastic opening tool, disengage the lower tab.

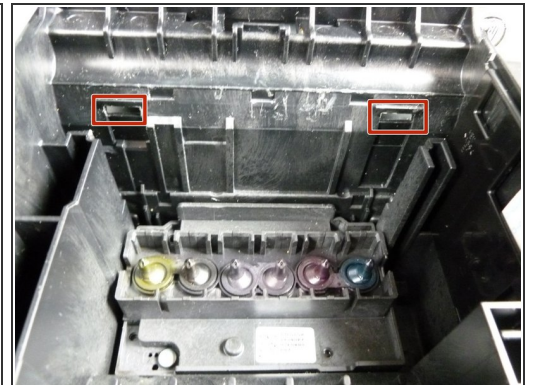
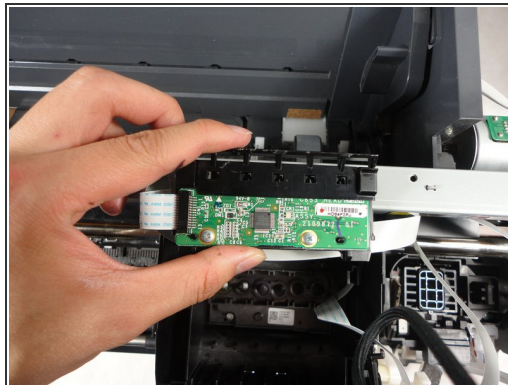
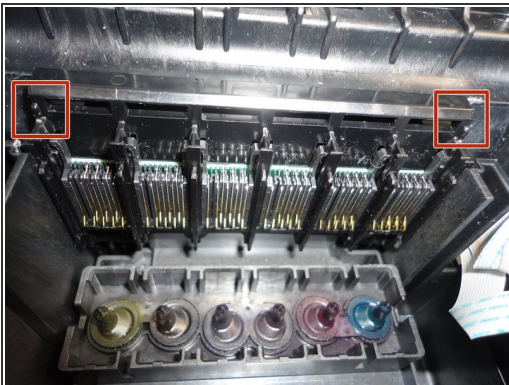


## Step 17



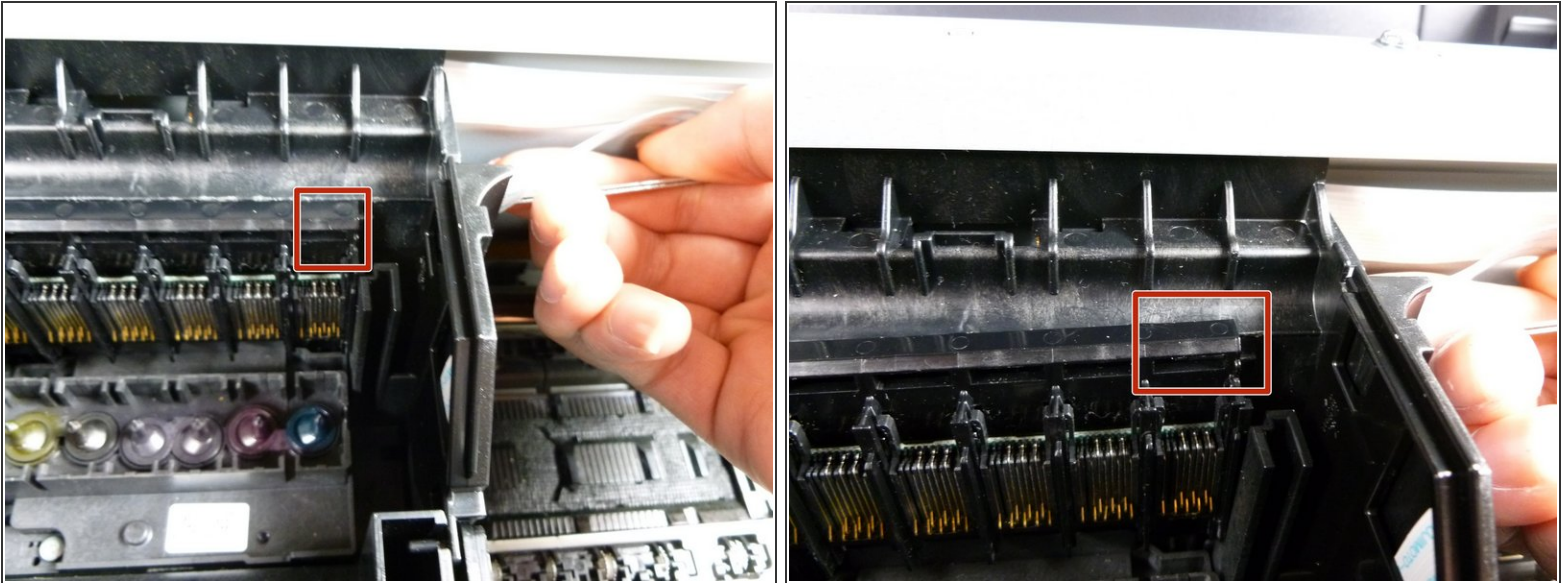
- Slide the cover upward and rotate it around the hinge by 90°.

## Step 18



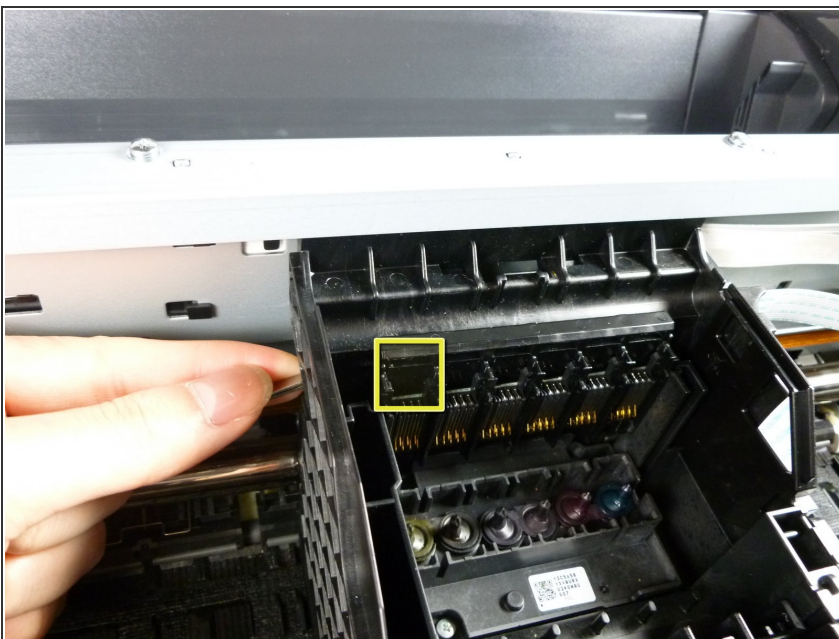
- ⓘ The CSIC assembly sits inside the carriage unit.
- Reaching from the back of the carriage unit, disengage the two tabs that hold the CSIC assembly in place.
- ⓘ The tabs can be difficult to disengage. The second image shows the rear of CSIC assembly.
- ⓘ The third image shows where the tabs lock onto the carriage unit.
- Remove the CSIC assembly from the carriage unit.

## Step 19



- Using tweezers, disengage the right tab from the back right panel of the carriage unit.
- Push the tweezers towards the front of the printer while pulling up on the right panel.
- ⓘ When the tab is disengaged, you can pull the panel upwards slightly to prevent the tab from engaging.

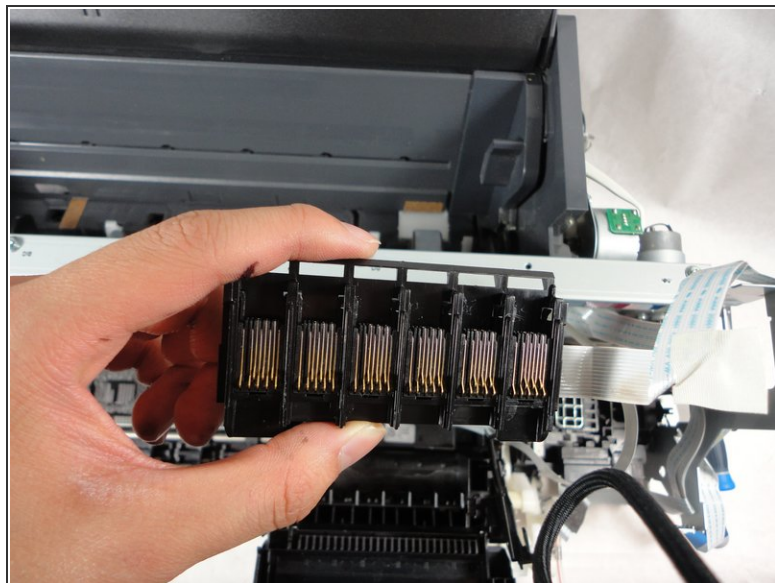
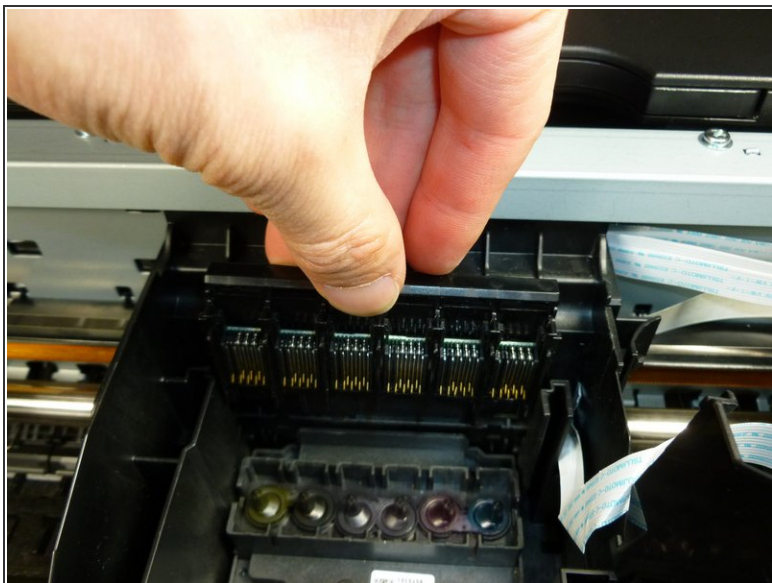
## Step 20



- Using the tweezers, disengage the left tab from the back left.
- Push the tweezers towards the front of the printer while pulling on the left side upwards.
- When both tabs are disengaged, the part is slightly raised.

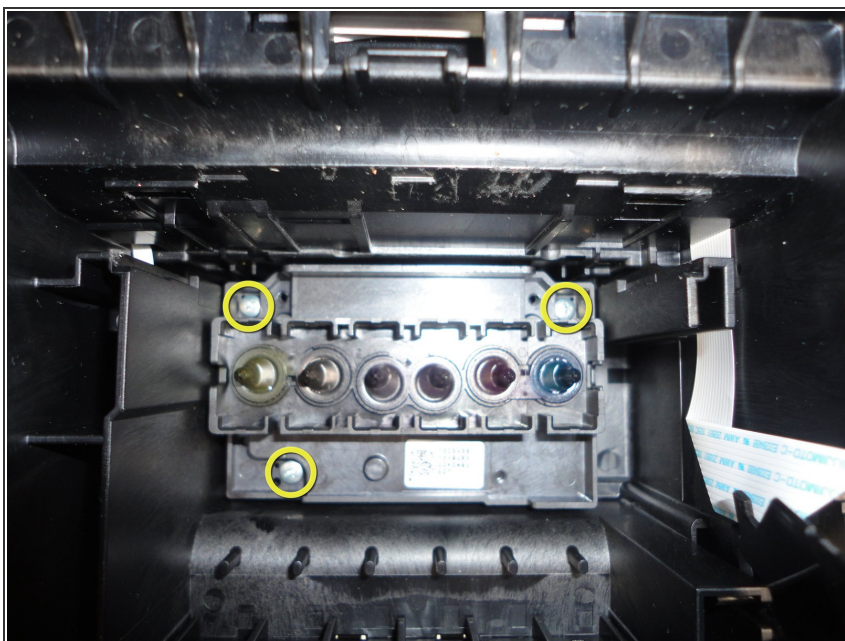


## Step 21



- Lift CSIC assembly up and out of the Carriage Unit.

## Step 22



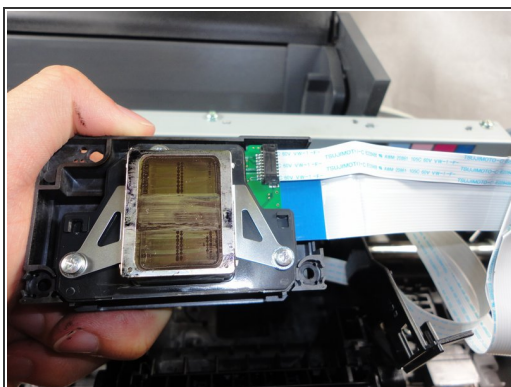
- ① The printhead is the part with 6 nozzles.
- Remove the three 8 mm #2 Phillips screws that secure the printhead.

## Step 23



- Remove the printhead from the carriage unit by lifting it up vertically.

## Step 24



- Disconnect the two ribbon cables on the back of the printhead.

To reassemble your device, follow these instructions in reverse order.