



Epson Stylus Photo 820 Driver Motor Replacement

If the printer refuses to move, the driver motor can be the culprit. Replace your motor using this step-by-step guide.

Written By: Alex Lin



INTRODUCTION

Replacing the driver motor of your printer.



TOOLS:

- [Phillips #00 Screwdriver](#) (1)
 - [Large Needle Nose Pliers](#) (1)
-

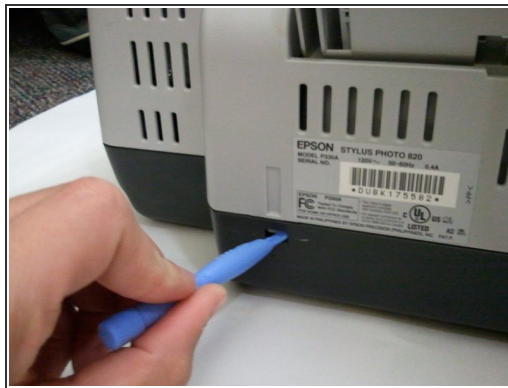
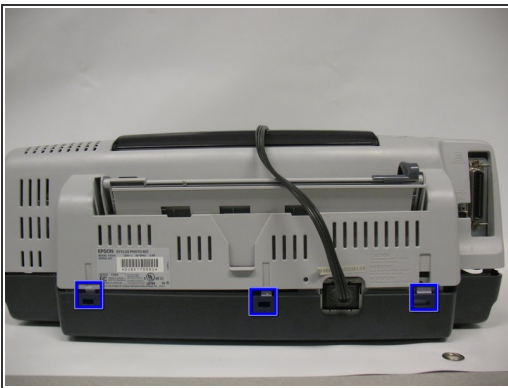
Step 1 — Top Cover



- To remove the top cover of the printer you have to first release it from several tabs.

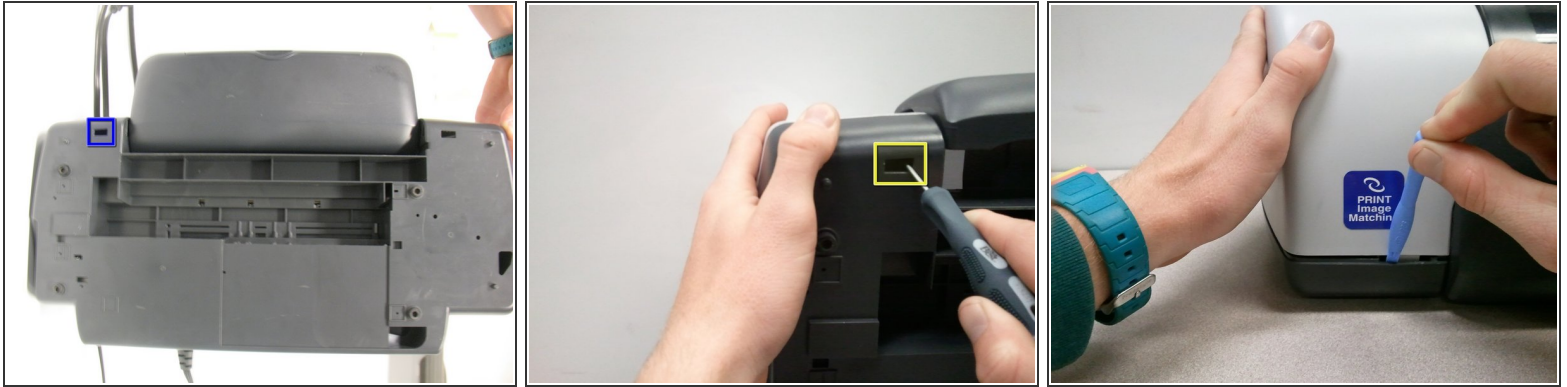
ⓘ Note: This may take more than one person to complete.

Step 2



- These three are the easiest tabs to remove. They are located on the back side of the printer.
- Push the tab in with one of the plastic opening tools.
- Keep the tab pushed in by leveraging the tool between the tab and the hole. Pull up on the case so that the tab doesn't lock back into place.
- Repeat this process with the furthestmost right tab, then proceed with the middle tab.

Step 3

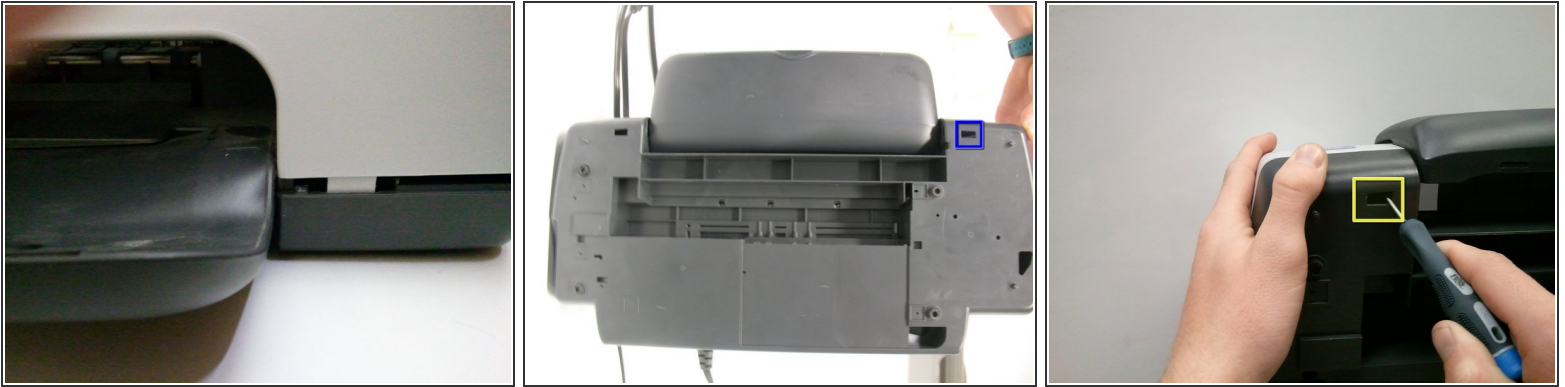


i Note: It is recommended that step 3 and step 4 be completed simultaneously. The tabs are identical just on opposite sides.

- Viewing from the front of the printer, there is a tab in the lower left corner.
 - Viewing the tab hole from the bottom of the printer.
 - Insert the mini screwdriver into the marked hole and pry out the tab.
- Push in towards the blue sticker of the printer while pulling up on the case at the same time. Use one of the tools to keep the tab pried open.

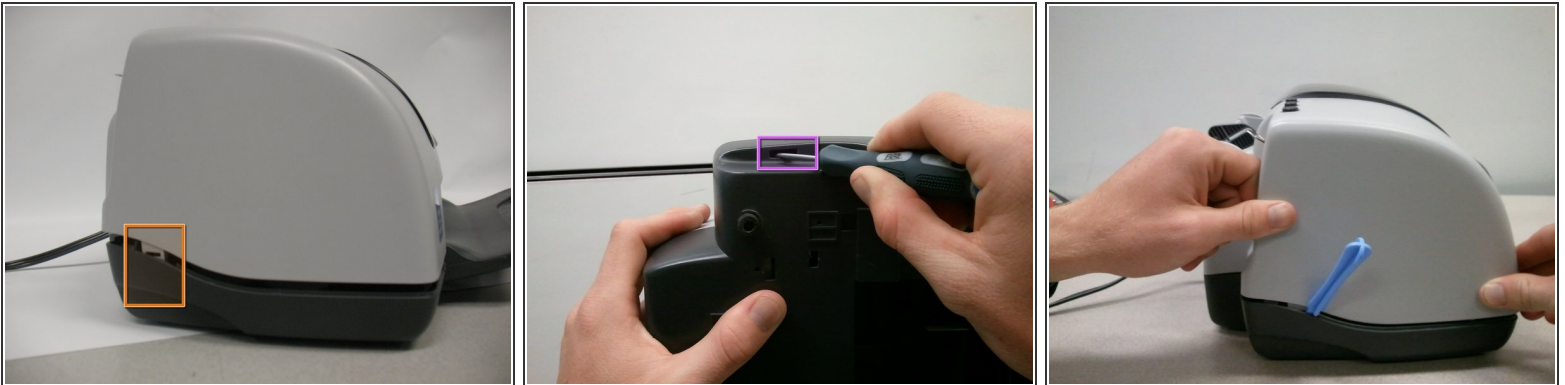
! This tab is the easiest to break so be very careful.

Step 4



- There is another tab in the right corner of the printer (viewing from the front).
 - Viewing the tab hole from under the printer.
 - Zoomed in on the tab hole.
- Follow the same instructions in step 3 to remove this tab.

Step 5



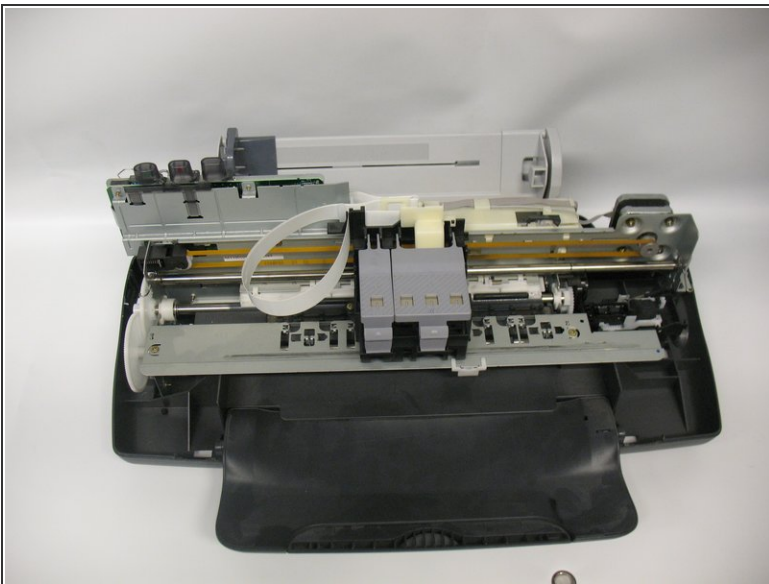
- The final two tabs can be more difficult to release. Viewing from the front, they are located in the back left and right corners of the printer.
- The release points for the tabs are located in holes on the depressed area of the base (darker piece).
 - Use the mini screwdriver to pry out the tab.
- Use one of the plastic tools to keep the tab pried out. Once it releases push in towards the printer (viewing from the side) and pull up on the case.

Step 6



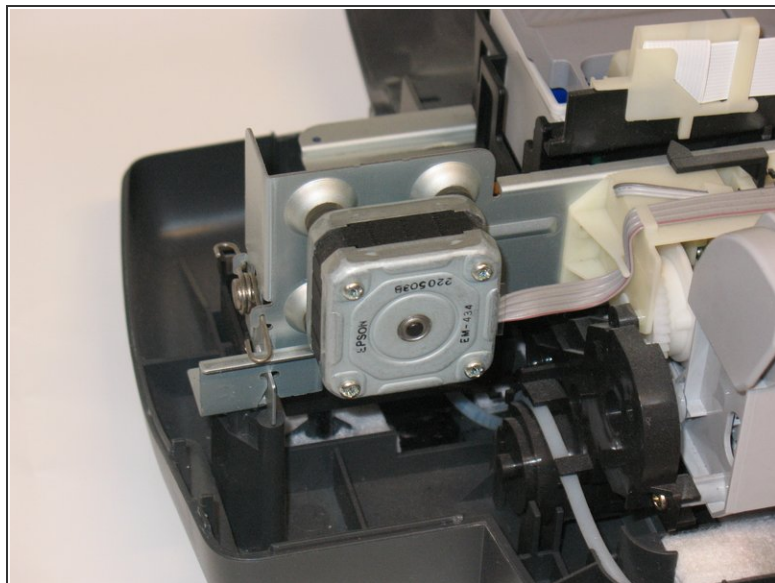
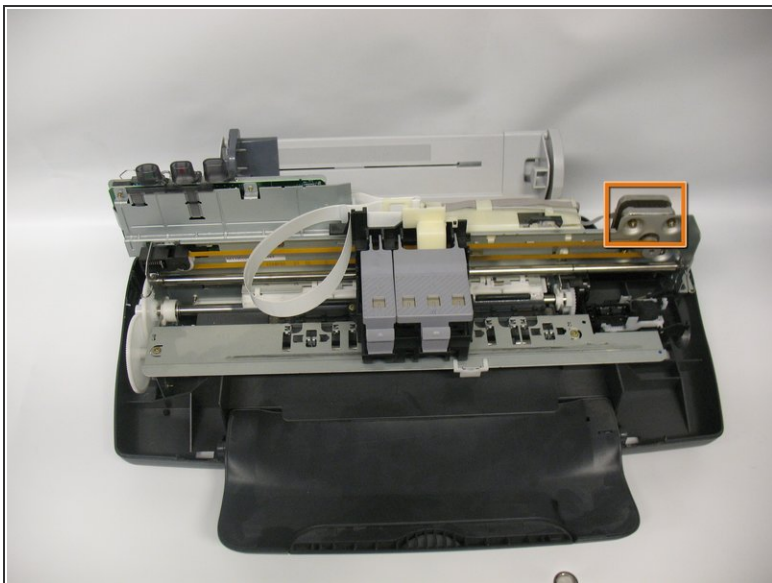
- All of the tabs have now been released.
- When trying to completely remove the cover, it gets caught on these two back components. Maneuvering around these can be tricky.
- Push the cover to the right slightly and then push it backwards (out of the screen in this picture). This should give it some wiggle room. Repeat this as necessary.

Step 7



- Now, pull the cover up and off.

Step 8 — Driver Motor



- Locate the drive motor. It is the square object located in the back right of the chassis.

Step 9

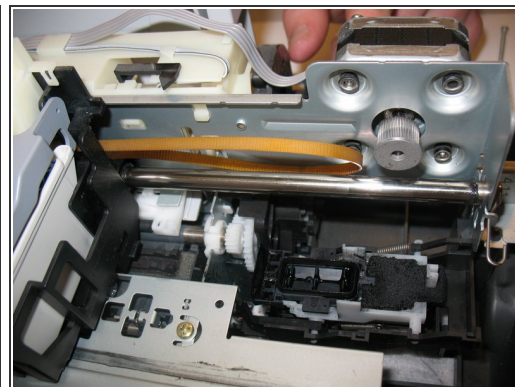
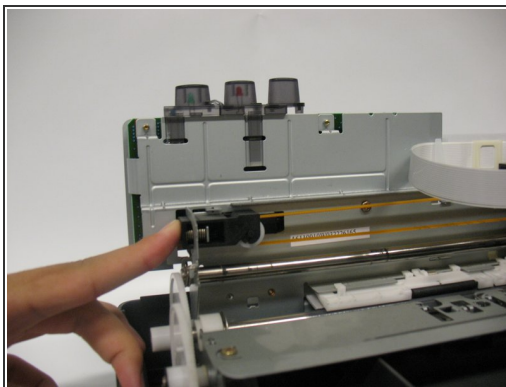
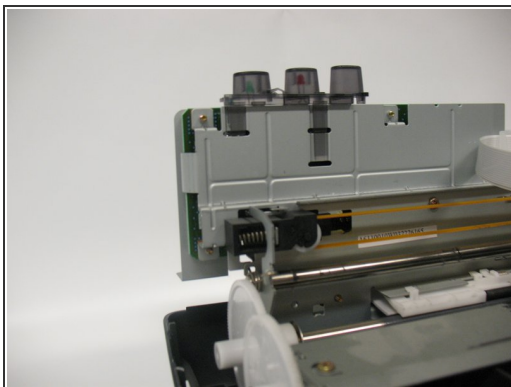


- Remove the four screws that hold the motor down.
- Use a small pair of needle-nose pliers to hold the back nut steady.



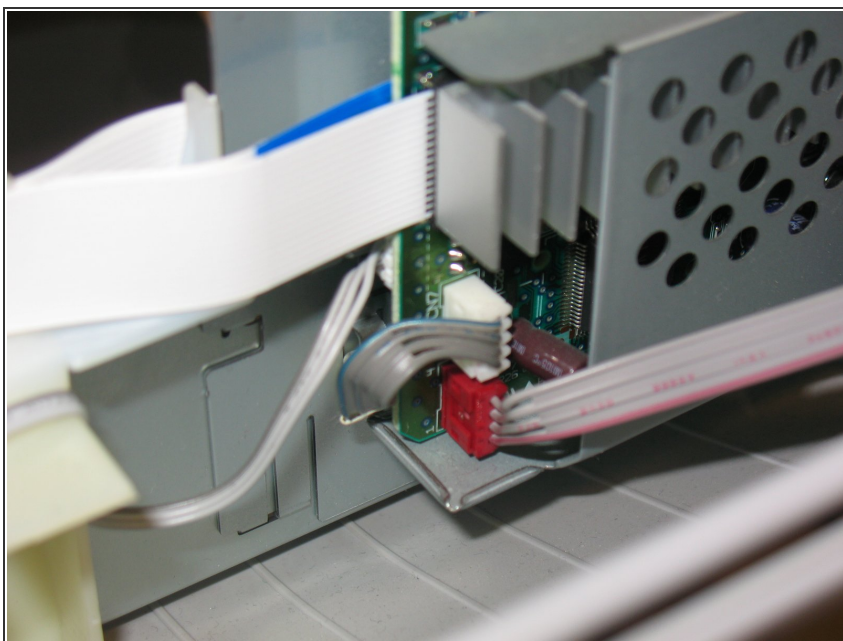
Be careful not to lose the small washers and grommets under the nut when removing the screws.

Step 10



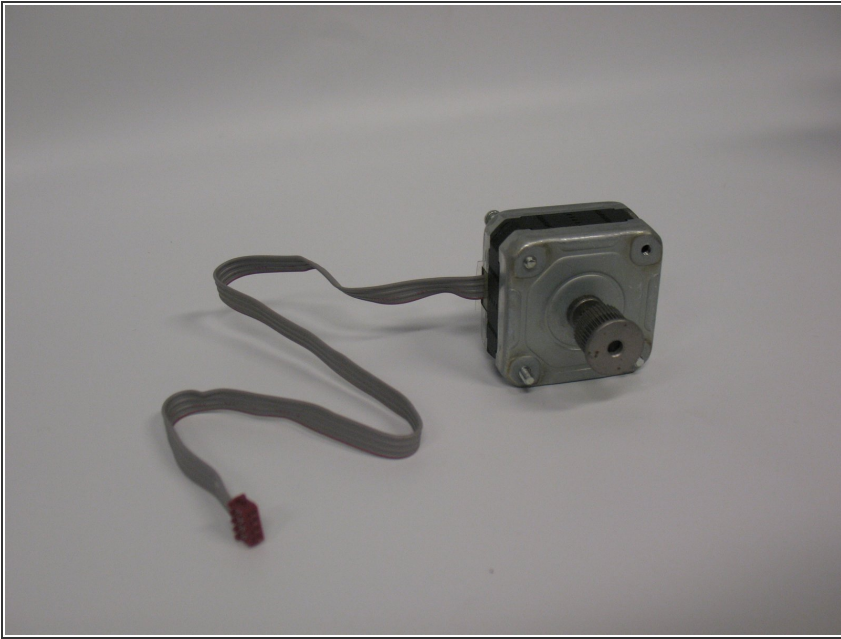
- Push on the spring loaded tensioner on the left side of the belt to loosen the force on the drive motor.

Step 11



- Remove the red cable connecting the motor to the logic board.
- ⚠ Be careful, this is the most sensitive part of the printer.

Step 12



- Once your old motor is out, follow the previous steps in reverse to install the new one!

To reassemble your device, follow these instructions in reverse order.