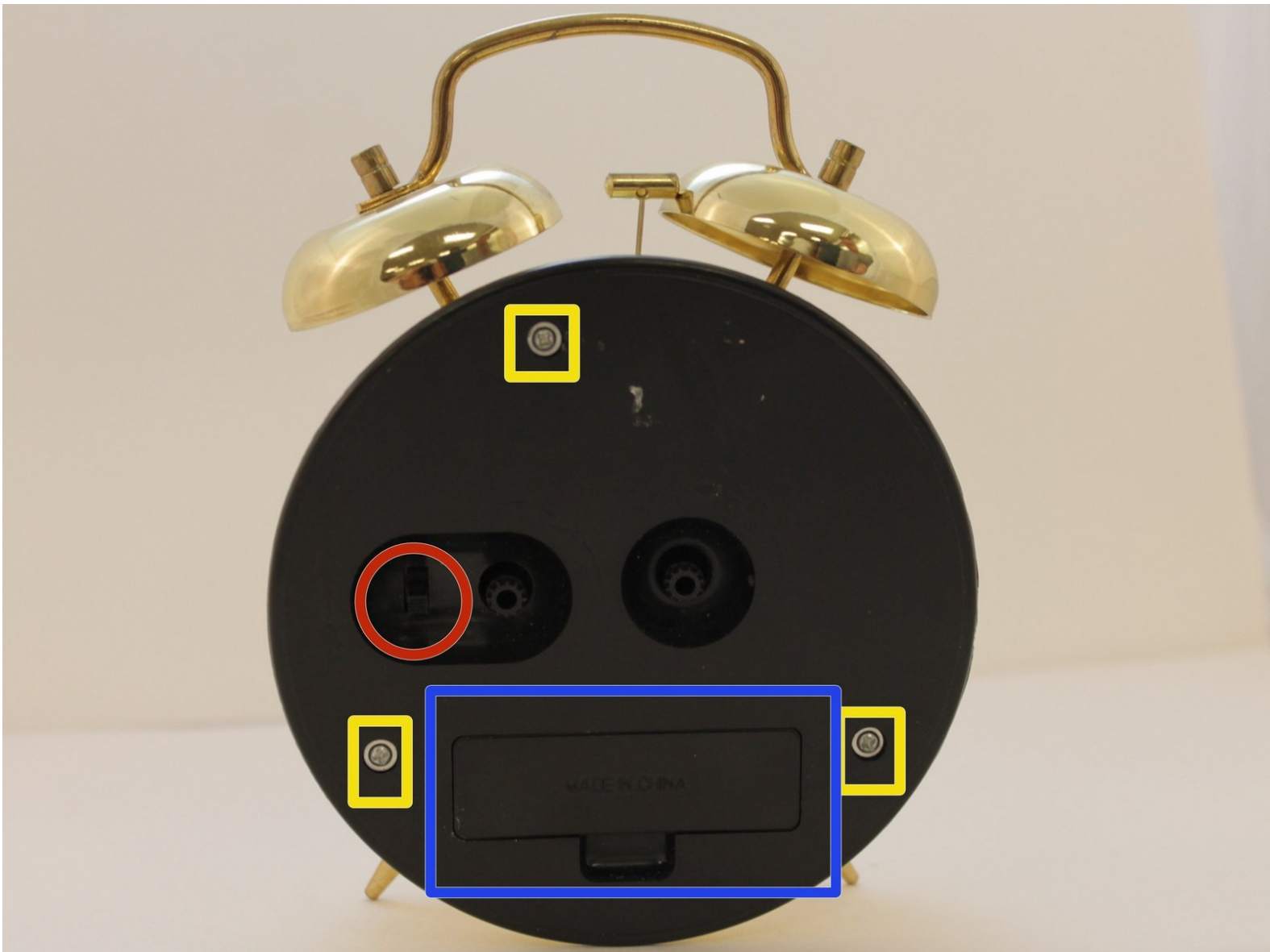




Equity Alarm Clock 13014 Alarm Switch Relacement

Written By: Alaa





TOOLS:

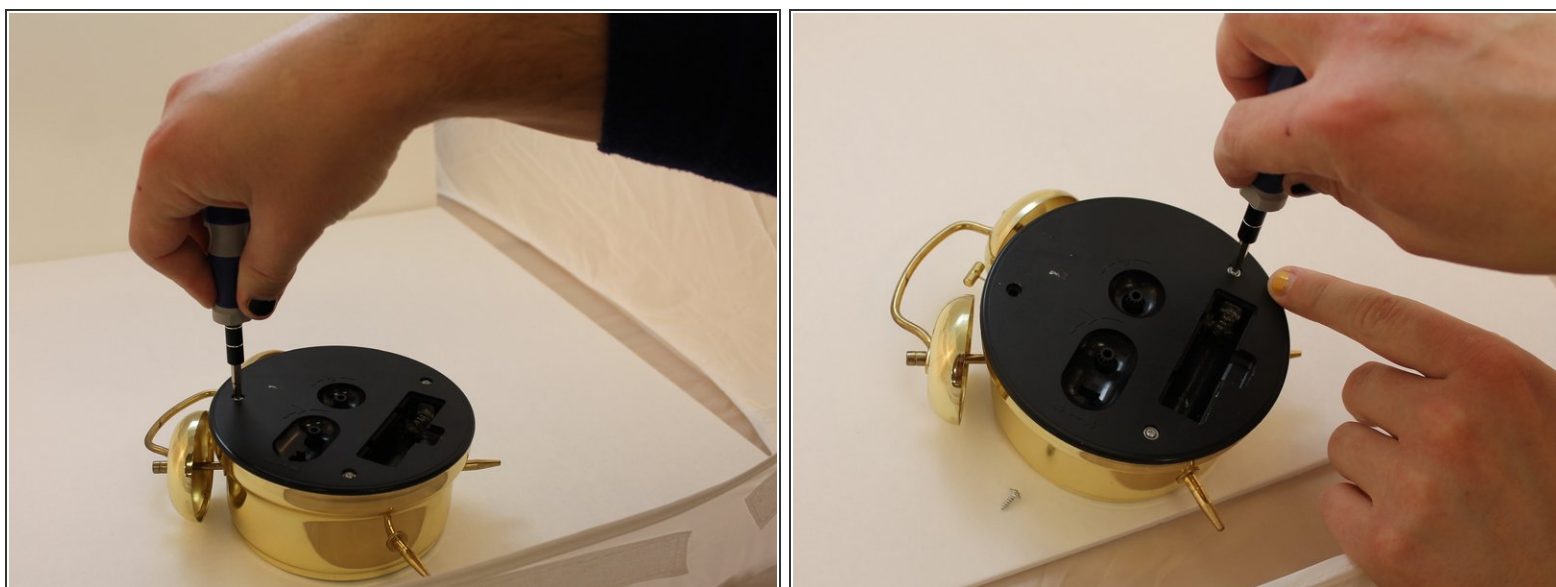
- [Phillips #1 Screwdriver](#) (1)
 - [Soldering Iron](#) (1)
-

Step 1 — Replacing the alarm switch



- remove the battery door using either your finger nail or a screwdriver.

Step 2 — Remove screws



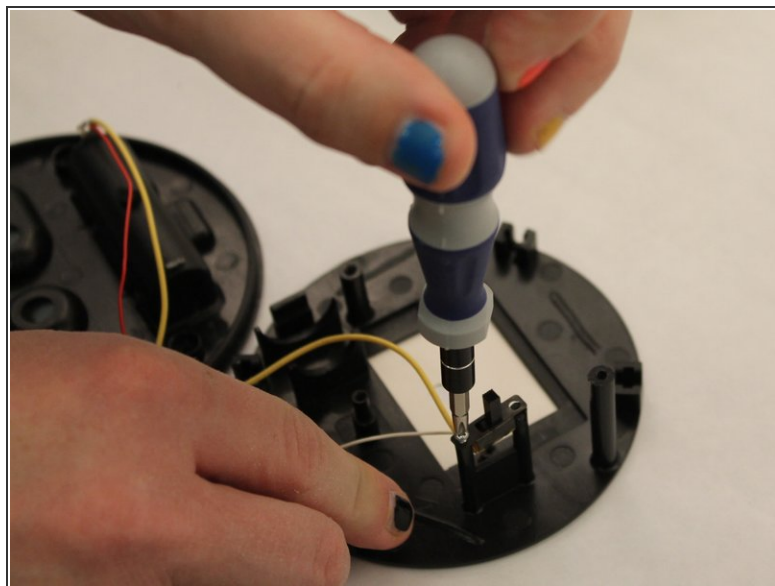
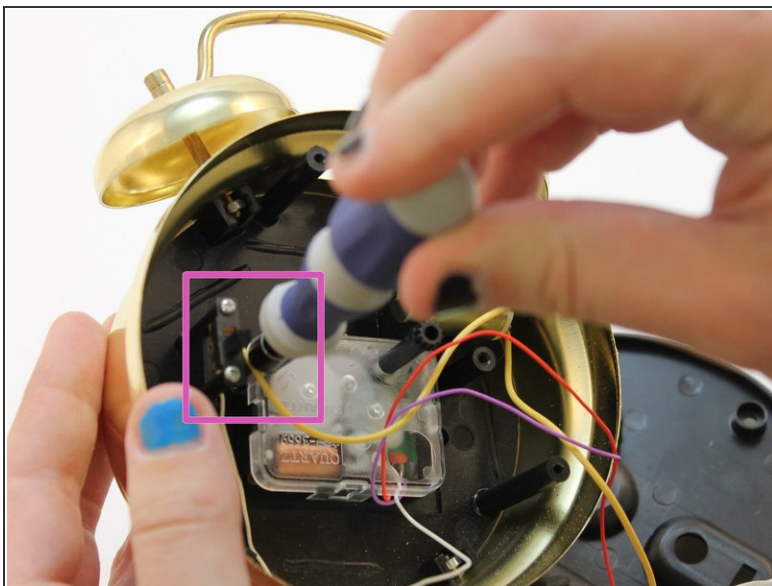
- Then remove the three screws on the back cover using a philips screwdriver #1.

Step 3 — Remove Cover



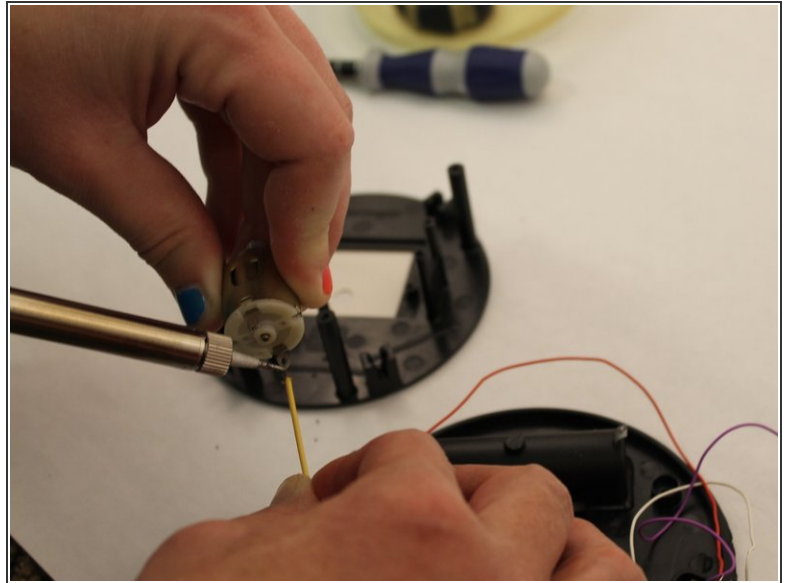
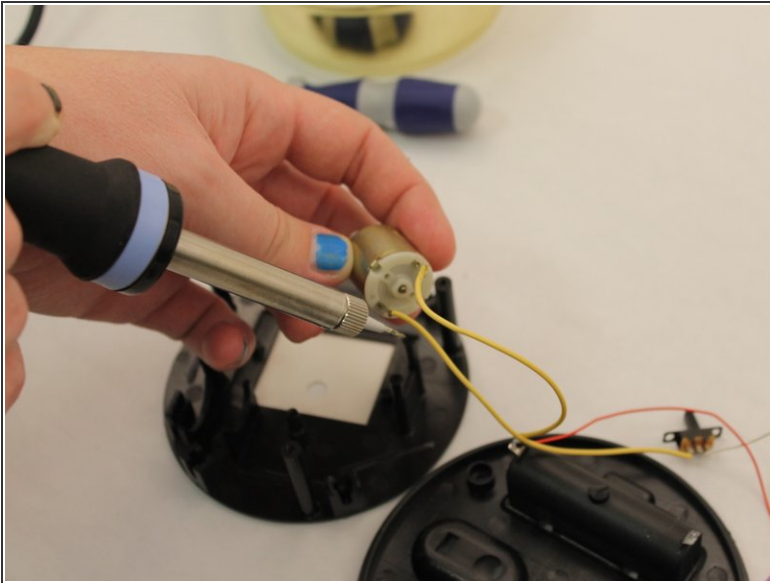
- Remove the black back cover with your hand and be careful not to cut the wires attached on the cover.

Step 4



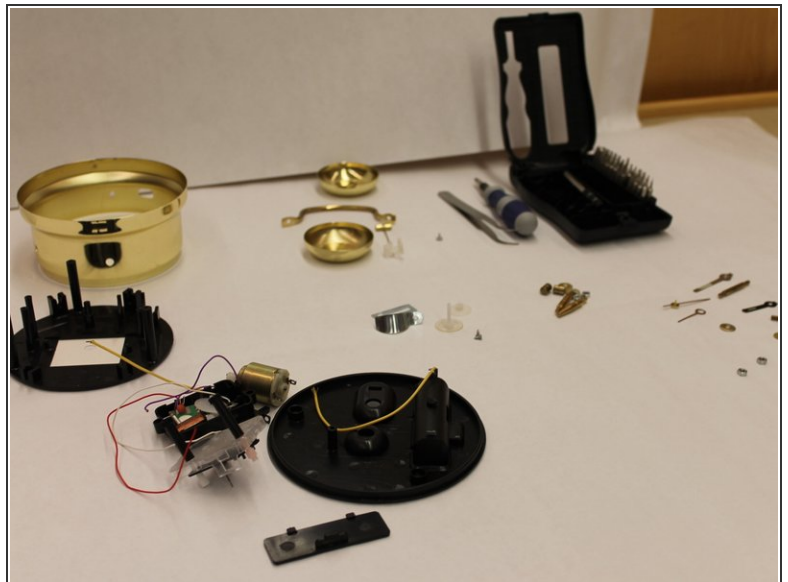
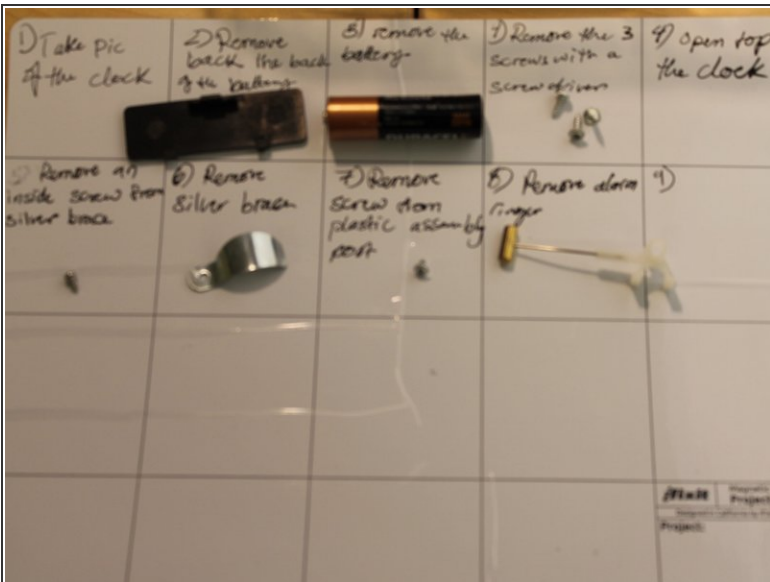
- Using a screwdriver #1, remove the 2 small screws located at the top and bottom of the alarm switch.

Step 5



- Using soldering iron, detach wire end from the copper cylinder by plait the end of the iron to the end of the wire. Now you can replace the alarm switch with a new one by attaching one end of the wires to the copper cylinder . Then install the switch screws using the screwdriver.

Step 6



- a photo of the steps we have been through in working on the clock and a photo of the tools we used and the clock parts during disassembly

To reassemble your device, follow these instructions in reverse order.