



# ErgoDox EZ Keyboard Repairability Assessment

ErgoDox EZ keyboard repairability assessment

Written By: Arthur Shi



---

## INTRODUCTION

ErgoDox EZ keyboard repairability assessment, performed on July 24, 2019. The model assessed is a white CIY (Change It Yourself) edition with no LED lighting.

---



### TOOLS:

- [Phillips #1 Screwdriver](#) (1)
-

## Step 1 — ErgoDox EZ Keyboard Repairability Assessment



- Exterior reference photos.
- The keyboard isn't ingress-protected. Liquid spillage can potentially damage the circuit board within.
- The keyboard uses standardized mini-USB and 3.5 mm TRRS connectors, which allows for easy replacement of worn cables.

## Step 2



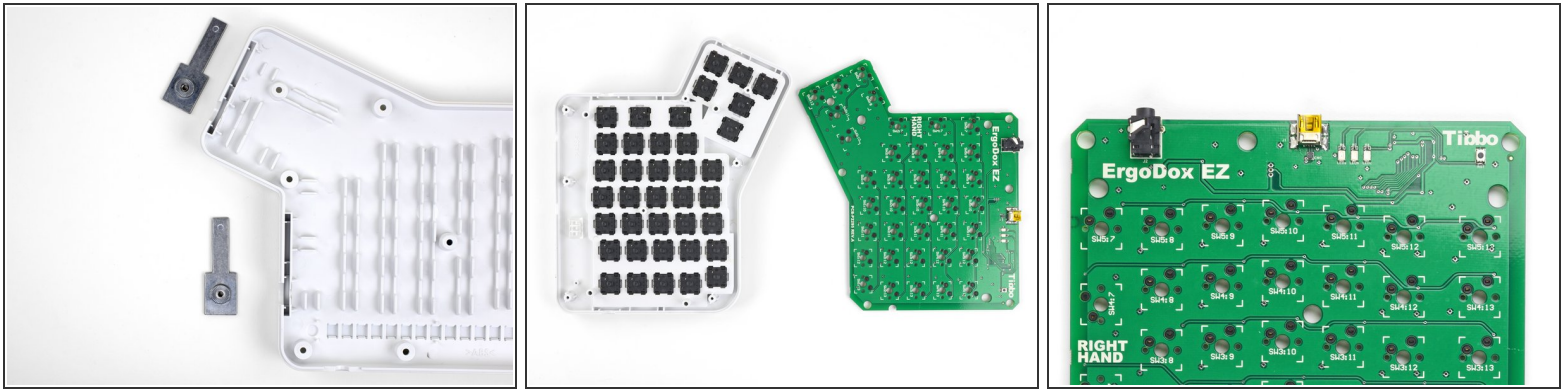
- The included puller tool works well in removing keycaps of all sizes, as well as key switches. Clear instructions on how to do so are offered online, though it may be helpful to include printed guidance.
- Malfunctioning key switches are a concern for keyboard longevity. The CIY system allows for easy replacement using off-the-shelf parts.

## Step 3



- The main housing is held together by standard Phillips screws, one of which is hidden under the plastic sticker.
- ① While the presence of the hidden screw is noted on the product website, it would be nice to have it visually marked on the sticker.

## Step 4



- Once opened, the metal brackets that support the tilt/tent legs can be easily removed for replacement.
- In the CIY model, the circuit board is held on by the key switches themselves, and can be immediately removed with careful prying.
- The board is silkscreened with key identifiers, which can help with troubleshooting.
- The keyboard's only ports—a mini-USB and 3.5 mm TRRS ports—are soldered onto the board. Because these ports are not high-use, this should not impact the keyboard's longevity.

## Step 5



## REPAIRABILITY SCORE:



- The ErgoDox EZ earns a 10 out of 10 on our repairability scale (10 being the easiest to repair):
  - Parts that are prone to wear, such as key switches and cables, are modular and individually replaceable with off-the-shelf components.
  - The product comes with a specialty tool, which is not necessary (but very helpful) for repairs.
  - The enclosure is held together with standard Phillips screws. No adhesives or clips are used.
  - The manufacturer provides repair documentation on their site.