



Etón Scorpion Battery Replacement

How to replace the battery.

Written By: Levi G



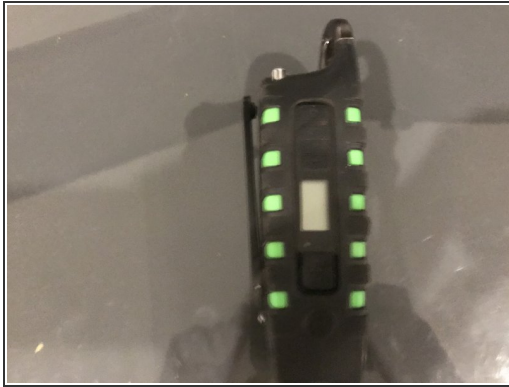
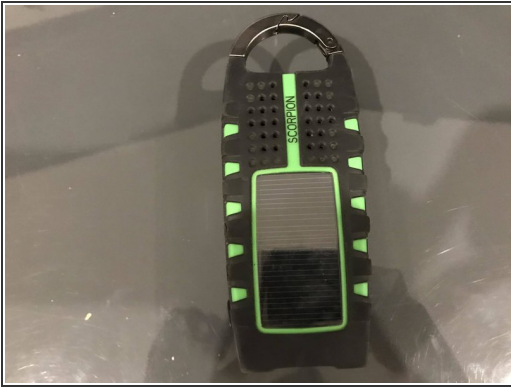
**TOOLS:**

- [Phillips #0 Screwdriver](#) (1)

**PARTS:**

- [Ni-MH 3*2/3AAA 3.6V 350MAH Battery](#) (1)

Step 1 — Battery



- Your device should look like this.

Step 2



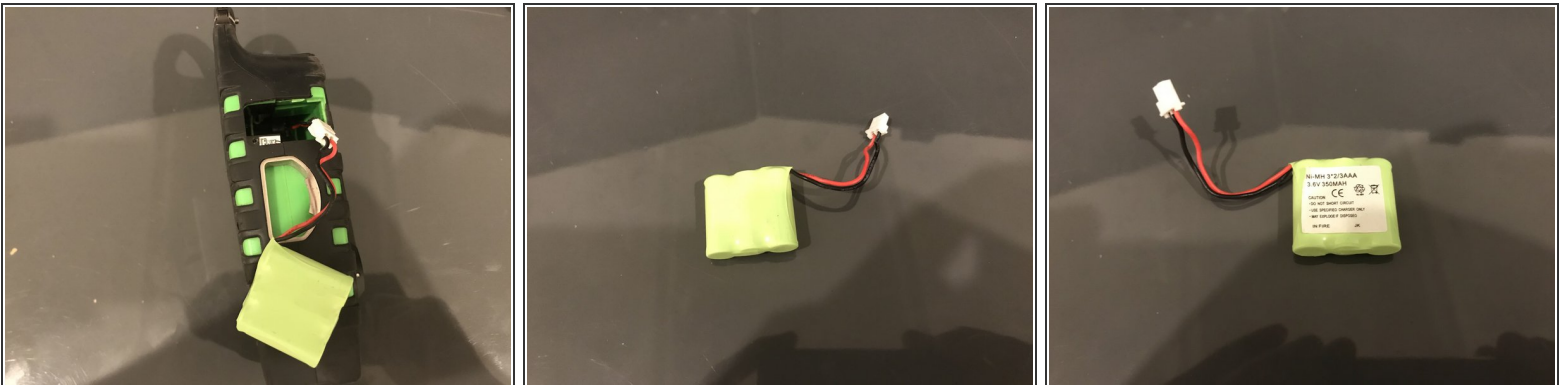
- Turn the unit on its side and look for this panel.

Step 3



- Unscrew this screw with a Phillips head #0 screwdriver.
- Remove the panel.

Step 4



- Pull out the battery and disconnect the connector.

To reassemble your device, follow these instructions in reverse order, and remember to connect the connector when putting in a new battery.