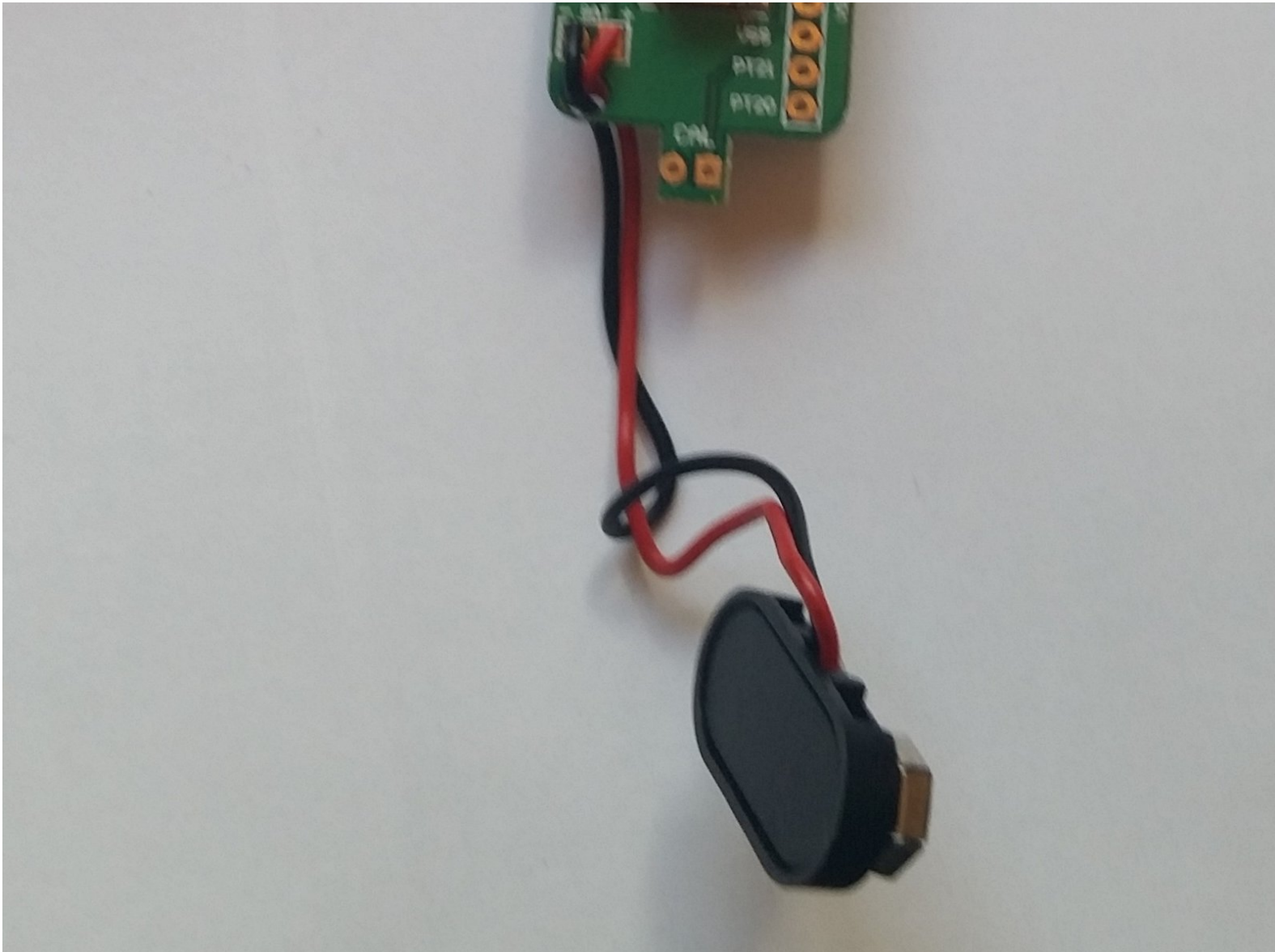




Etekcity Lasergrip 1080 Battery Connector Replacement

If the device is not powering on and the battery is not the problem, it may be the battery connector.

Written By: Patrick Crawford



INTRODUCTION

This guide will show you how to replace the battery connector. This replacement is necessary if a new battery is installed and the device still won't work or if the wires break. This will use a screwdriver and a soldering iron. Be careful when using the soldering iron as it is very hot. There is a link to a soldering guide in the Troubleshooting section of the device page.

TOOLS:

- [Soldering Iron](#) (1)
 - [Phillips #0 Screwdriver](#) (1)
 - [iFixit Opening Tools](#) (1)
-

Step 1 — Battery



- Pull the battery cover away from the handle by gripping near the thumb groove.

Step 2



- Gently pull the battery out of the handle.

⚠ Excessive force could damage wires.

Step 3



- Disconnect the battery by pulling the connector away from it.

- Positive first
- Negative second

⚠ When replacing the battery, this order is reversed.

Step 4 — Buttons




- Remove the battery cover from the device by pulling it straight out.

Step 5



- Using the plastic opening tool remove the front and rear yellow covers.

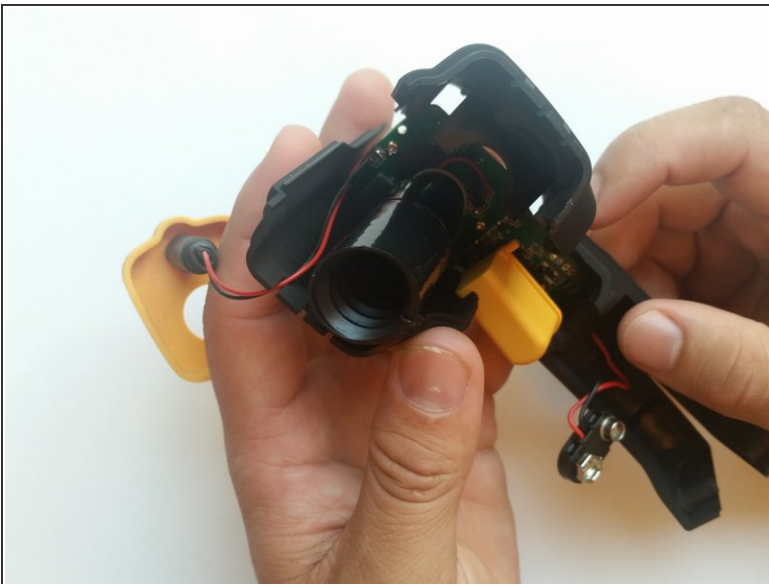
 When removing the back cover, be careful not to lose the buttons as they are not connected.

Step 6



- Remove the two 3.1 mm Phillips #0 screws.

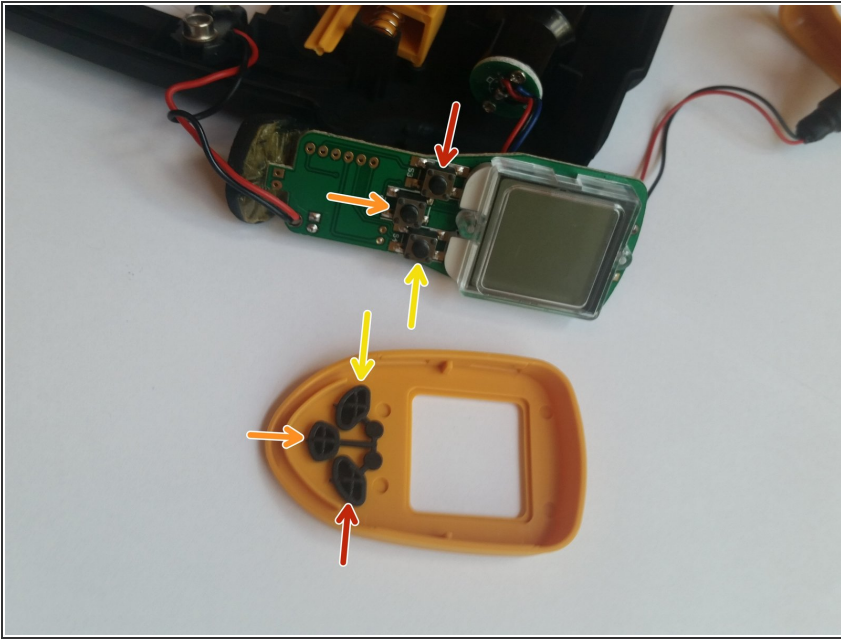
Step 7



- Pull the two halves apart.

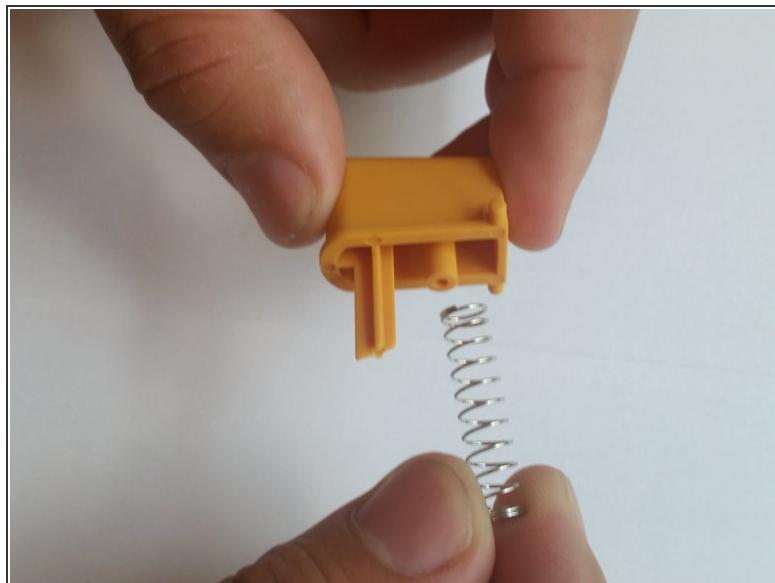
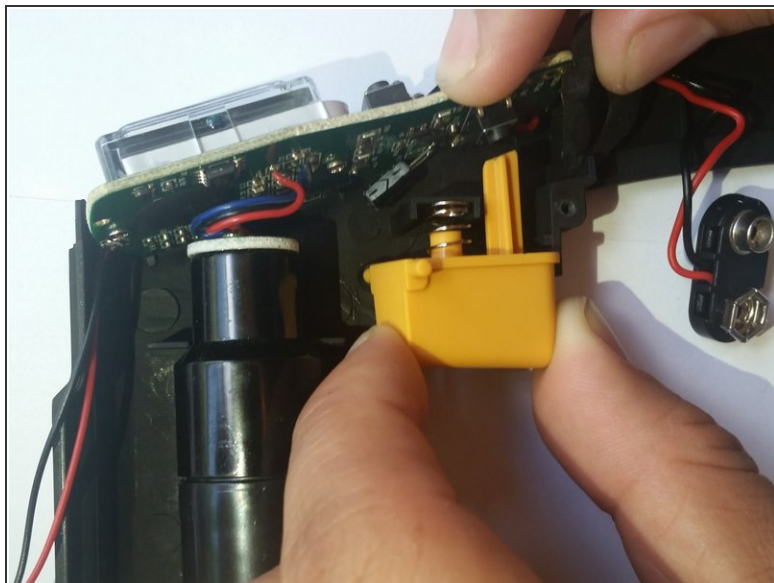
⚠ Be careful not to lose any components on the inside.

Step 8



- Realign the buttons with the button terminals.
- Red terminal to red button.
- Orange terminal to orange button.
- Yellow terminal to yellow button.

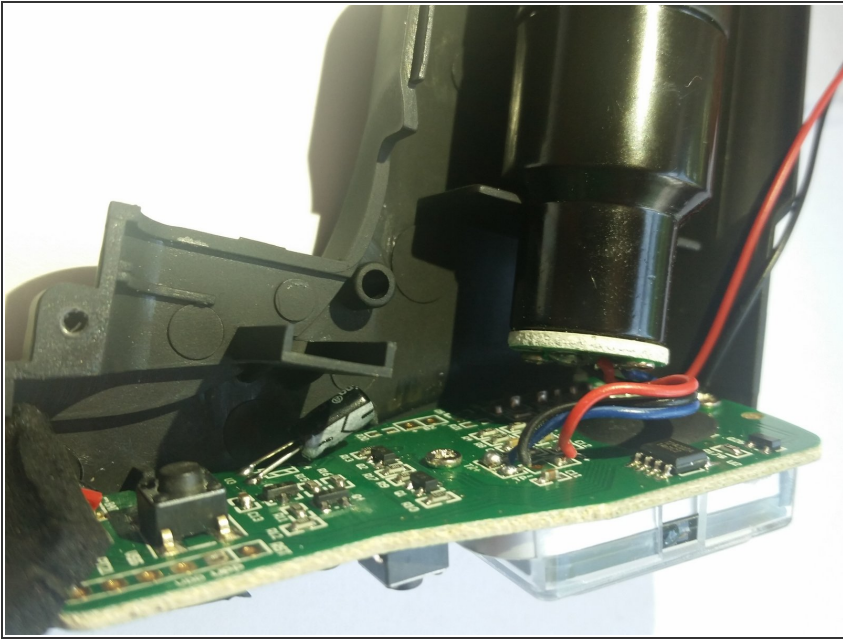
Step 9 — Etekcity Lasergrip 1080 Trigger Replacement



- Carefully pull the trigger out.

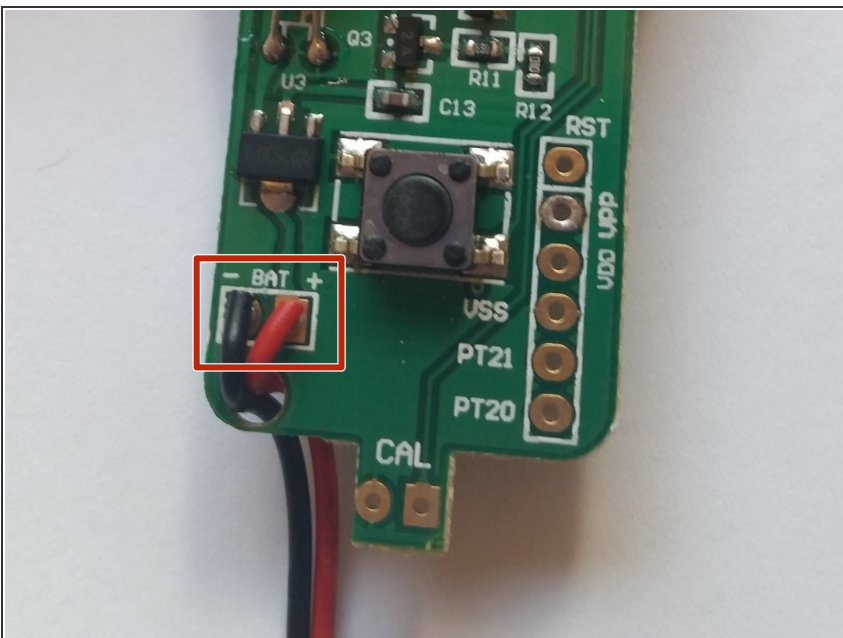
- ⚠ The trigger is spring loaded, so be careful that you do not lose the spring as you pull the trigger out.
- ℹ To put the trigger back in, align the peg with the hole in the handle and align the shaft with the button terminal.

Step 10 — Battery Connector



- Pull the motherboard out of its slot in the device.

Step 11



- Use a soldering iron and melt the solder where the battery connector's wires are attached to the motherboard.
- ⚠ Soldering irons are hot and should only be handled by those who know what they are doing and are wearing proper safety equipment. There is a link to a soldering guide in the Troubleshooting section of the device page.

To reassemble your device, follow these instructions in reverse order.