



# Etekcity Lasergrip 1080 Screen Replacement

The screen may be damaged and need to be replaced. You can remove it and replace it.

Written By: Carlos Pineda



## INTRODUCTION

This guide will show you how to replace a faulty screen. This will use a screwdriver and a plastic opening tool. There are no hazards involved with this guide.

---

### TOOLS:

- [Phillips #1 Screwdriver](#) (1)
  - [Phillips #00 Screwdriver](#) (1)
  - [Phillips #0 Screwdriver](#) (1)
  - [iFixit Opening Tools](#) (1)
-

## Step 1 — Battery



- Pull the battery cover away from the handle by gripping near the thumb groove.

## Step 2



- Gently pull the battery out of the handle.

⚠ Excessive force could damage wires.

## Step 3



- Disconnect the battery by pulling the connector away from it.

- Positive first
- Negative second

⚠ When replacing the battery, this order is reversed.



## Step 4 — Buttons




- Remove the battery cover from the device by pulling it straight out.

## Step 5



- Using the plastic opening tool remove the front and rear yellow covers.

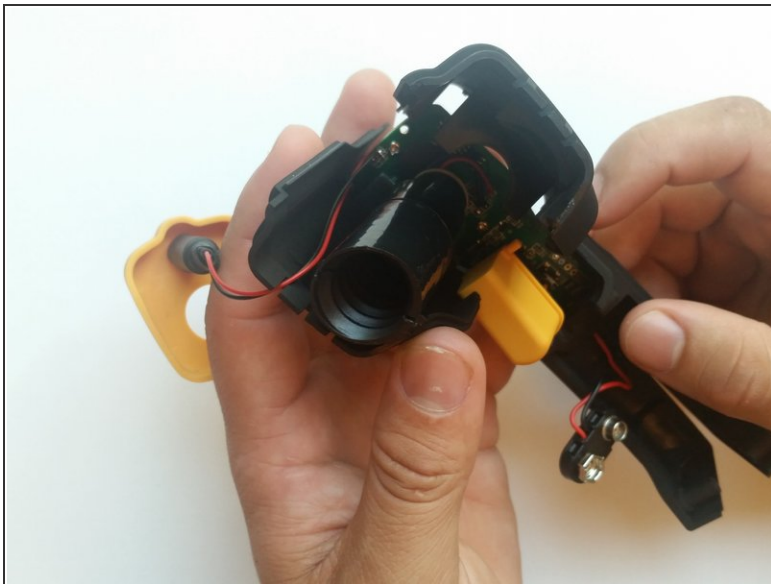
 When removing the back cover, be careful not to lose the buttons as they are not connected.

## Step 6



- Remove the two 3.1 mm Phillips #0 screws.

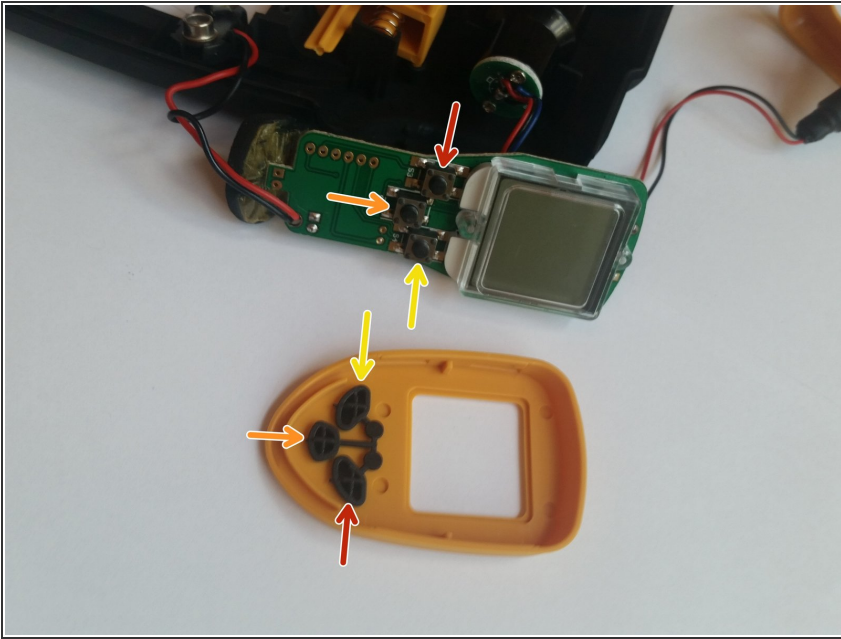
## Step 7



- Pull the two halves apart.

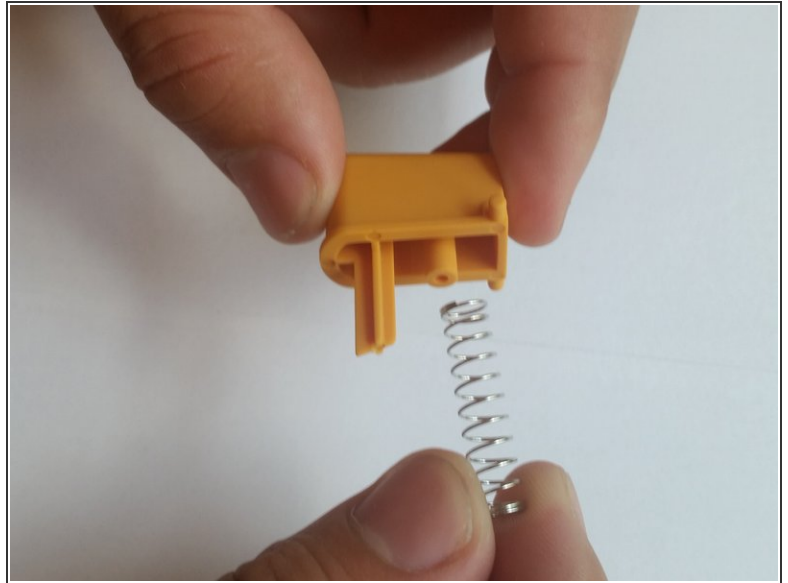
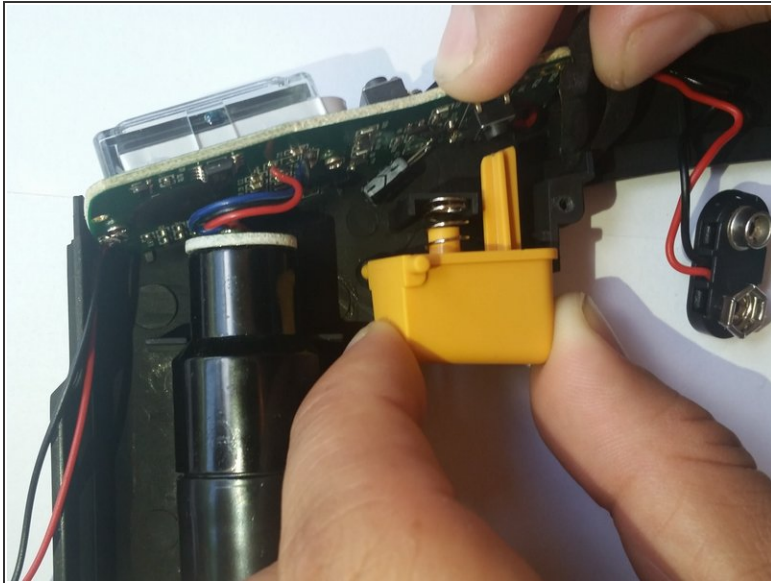
⚠ Be careful not to lose any components on the inside.

## Step 8



- Realign the buttons with the button terminals.
- Red terminal to red button.
- Orange terminal to orange button.
- Yellow terminal to yellow button.

## Step 9 — Etekcity Lasergrip 1080 Trigger Replacement

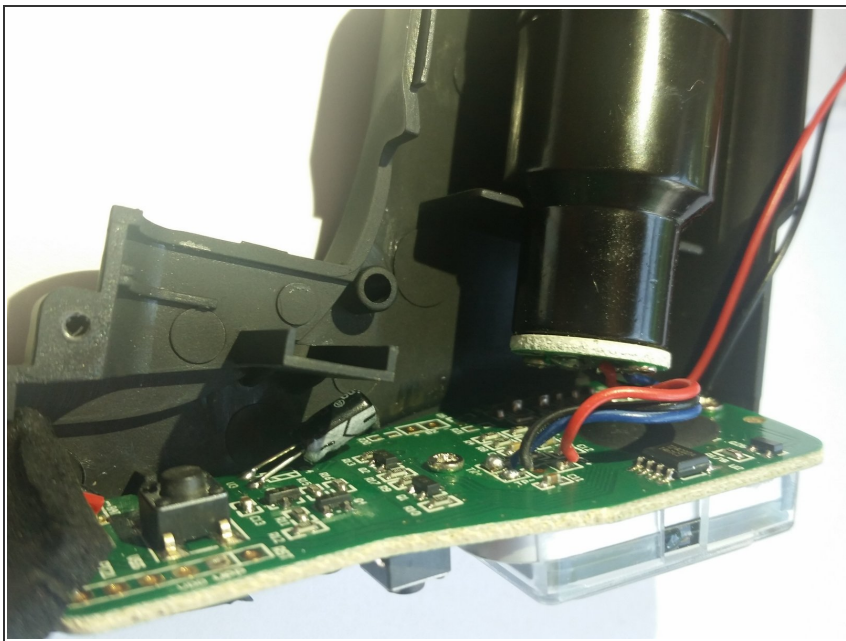


- Carefully pull the trigger out.

- ⚠ The trigger is spring loaded, so be careful that you do not lose the spring as you pull the trigger out.
- ℹ To put the trigger back in, align the peg with the hole in the handle and align the shaft with the button terminal.

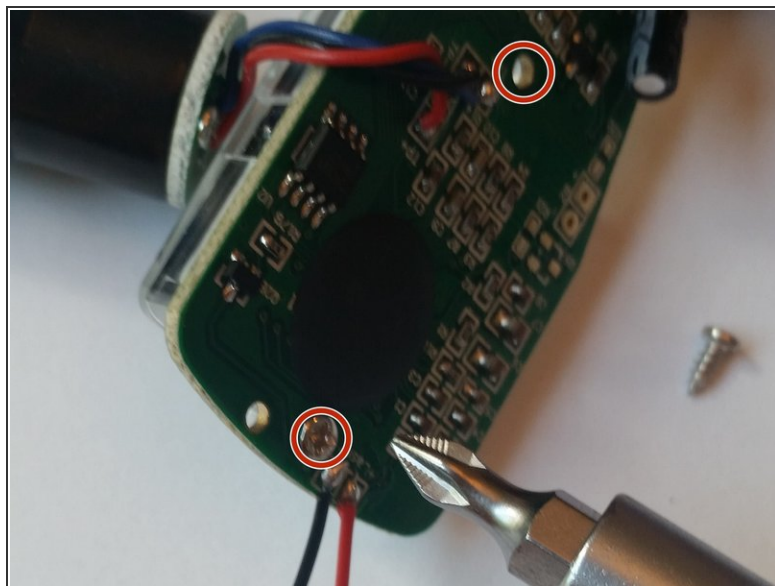
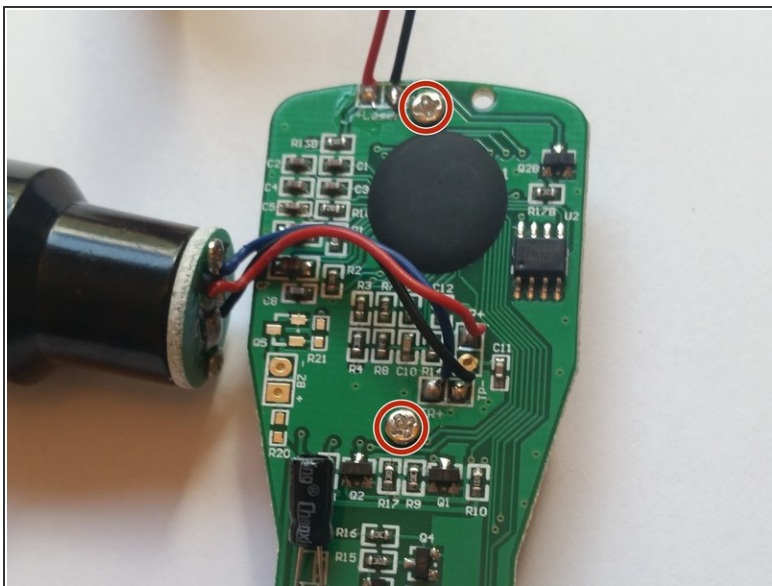


## Step 10 — Screen



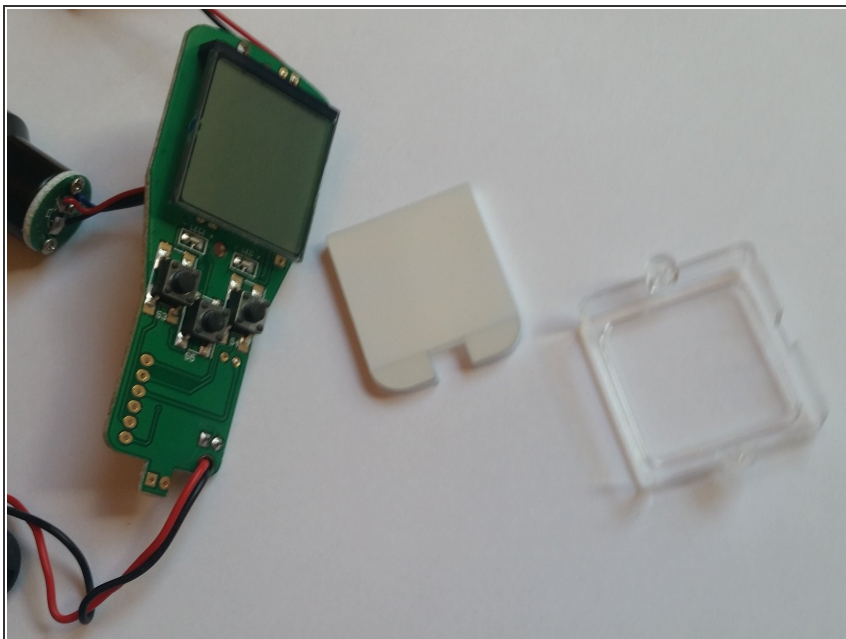
- Carefully pull the motherboard out of its slot in the body of the device.

## Step 11



- Unscrew the two 3.4 mm screws on the motherboard.

## Step 12



- Take off the cover and separate the parts.

⚠ All of these parts are fragile and mishandling them may cause damage.

To reassemble your device, follow these instructions in reverse order.