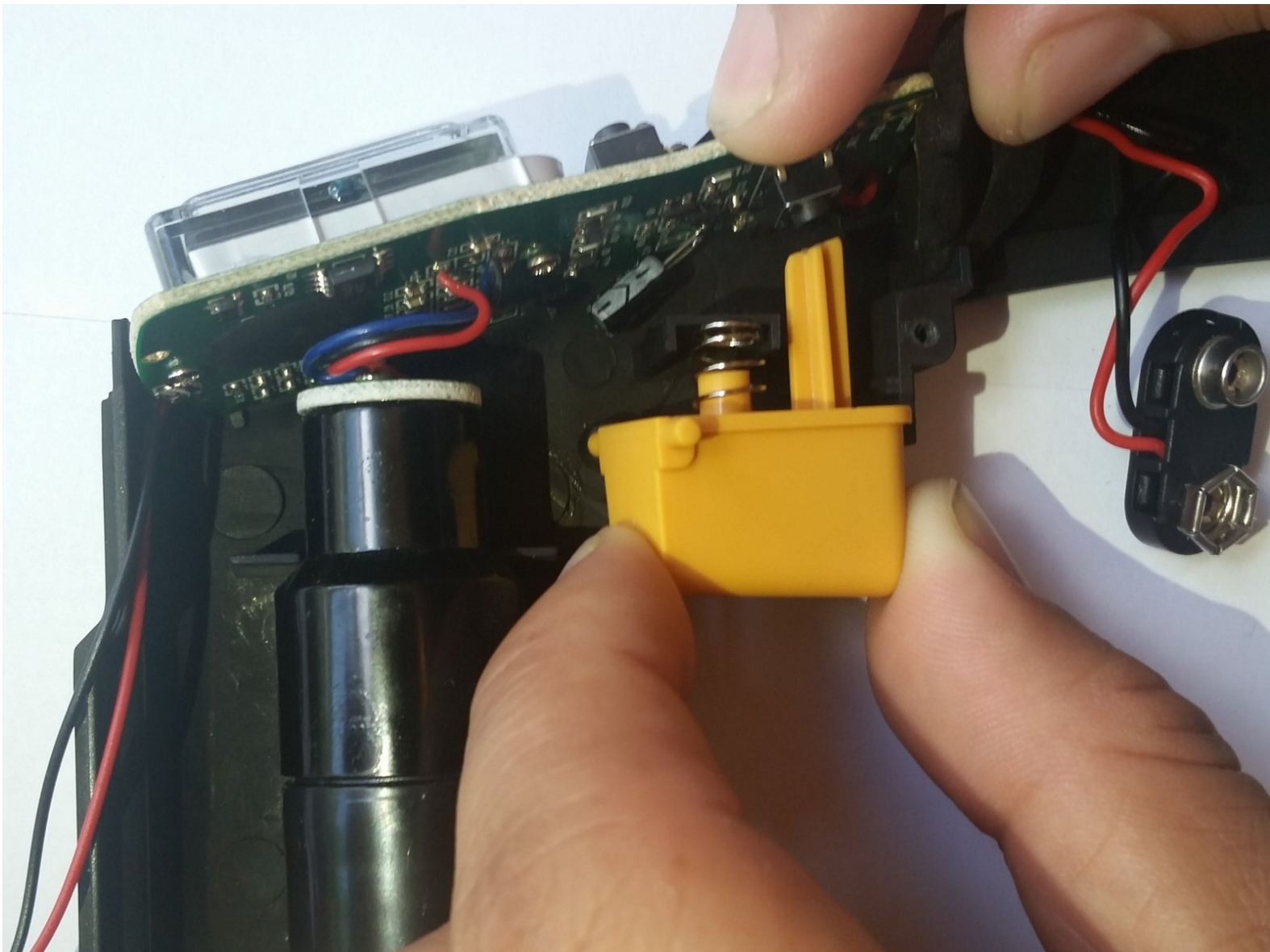




Etekcity Lasergrip 1080 Trigger Replacement

This guide is for a trigger that will not work.

Written By: Patrick Crawford



INTRODUCTION

This guide will show you how to repair a trigger that has a faulty connection. If the trigger will depress and not return to its original position or if it will not even depress, this will be necessary. The tool needed is a screwdriver. There are no hazards in this guide.



TOOLS:

- [Phillips #0 Screwdriver](#) (1)
 - [iFixit Opening Tools](#) (1)
-

Step 1 — Battery



- Pull the battery cover away from the handle by gripping near the thumb groove.

Step 2



- Gently pull the battery out of the handle.
- ⚠ Excessive force could damage wires.

Step 3



- Disconnect the battery by pulling the connector away from it.

- Positive first
- Negative second

⚠ When replacing the battery, this order is reversed.

Step 4 — Buttons




- Remove the battery cover from the device by pulling it straight out.

Step 5



- Using the plastic opening tool remove the front and rear yellow covers.

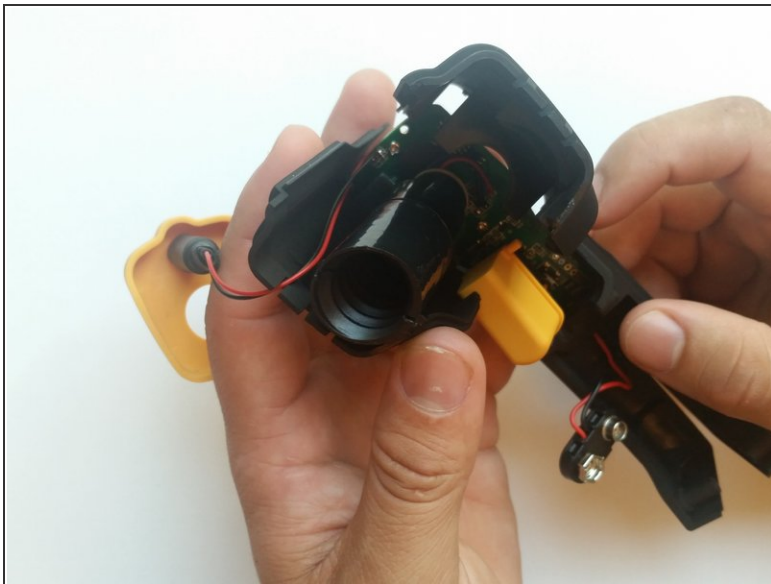
 When removing the back cover, be careful not to lose the buttons as they are not connected.

Step 6



- Remove the two 3.1 mm Phillips #0 screws.

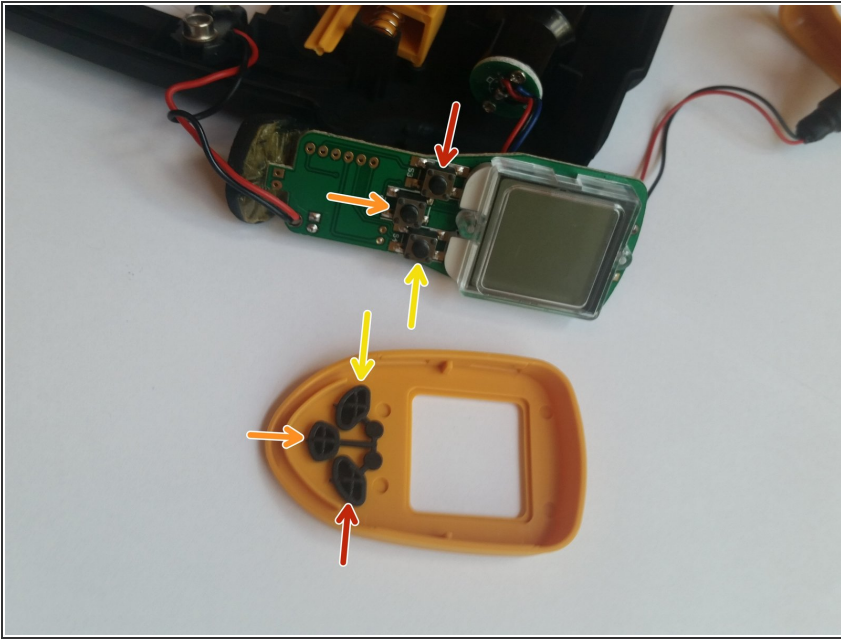
Step 7



- Pull the two halves apart.

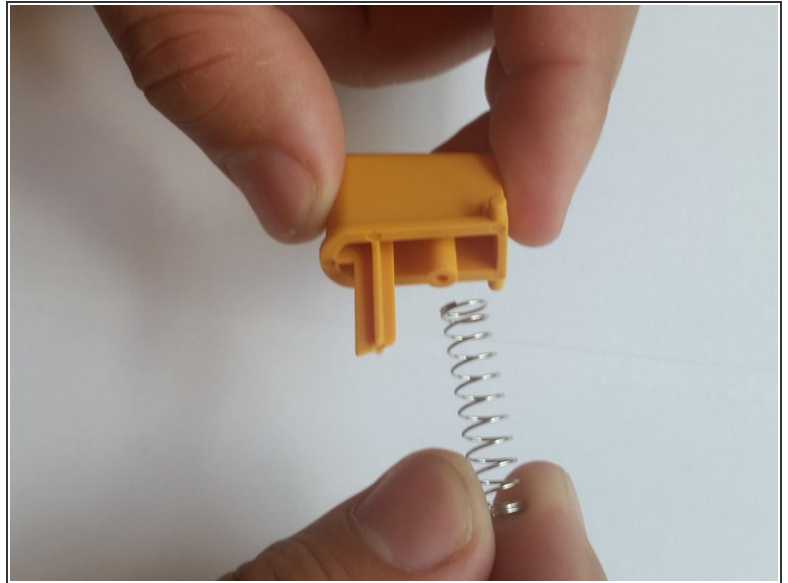
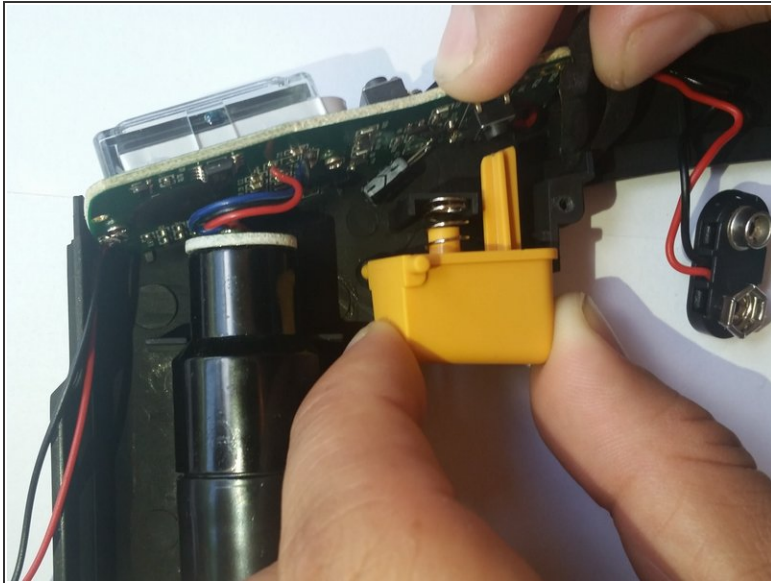
⚠ Be careful not to lose any components on the inside.

Step 8



- Realign the buttons with the button terminals.
- Red terminal to red button.
- Orange terminal to orange button.
- Yellow terminal to yellow button.

Step 9 — Etekcity Lasergrip 1080 Trigger Replacement



- Carefully pull the trigger out.

- ⚠ The trigger is spring loaded, so be careful that you do not lose the spring as you pull the trigger out.
- ℹ To put the trigger back in, align the peg with the hole in the handle and align the shaft with the button terminal.

To reassemble your device, follow these instructions in reverse order.