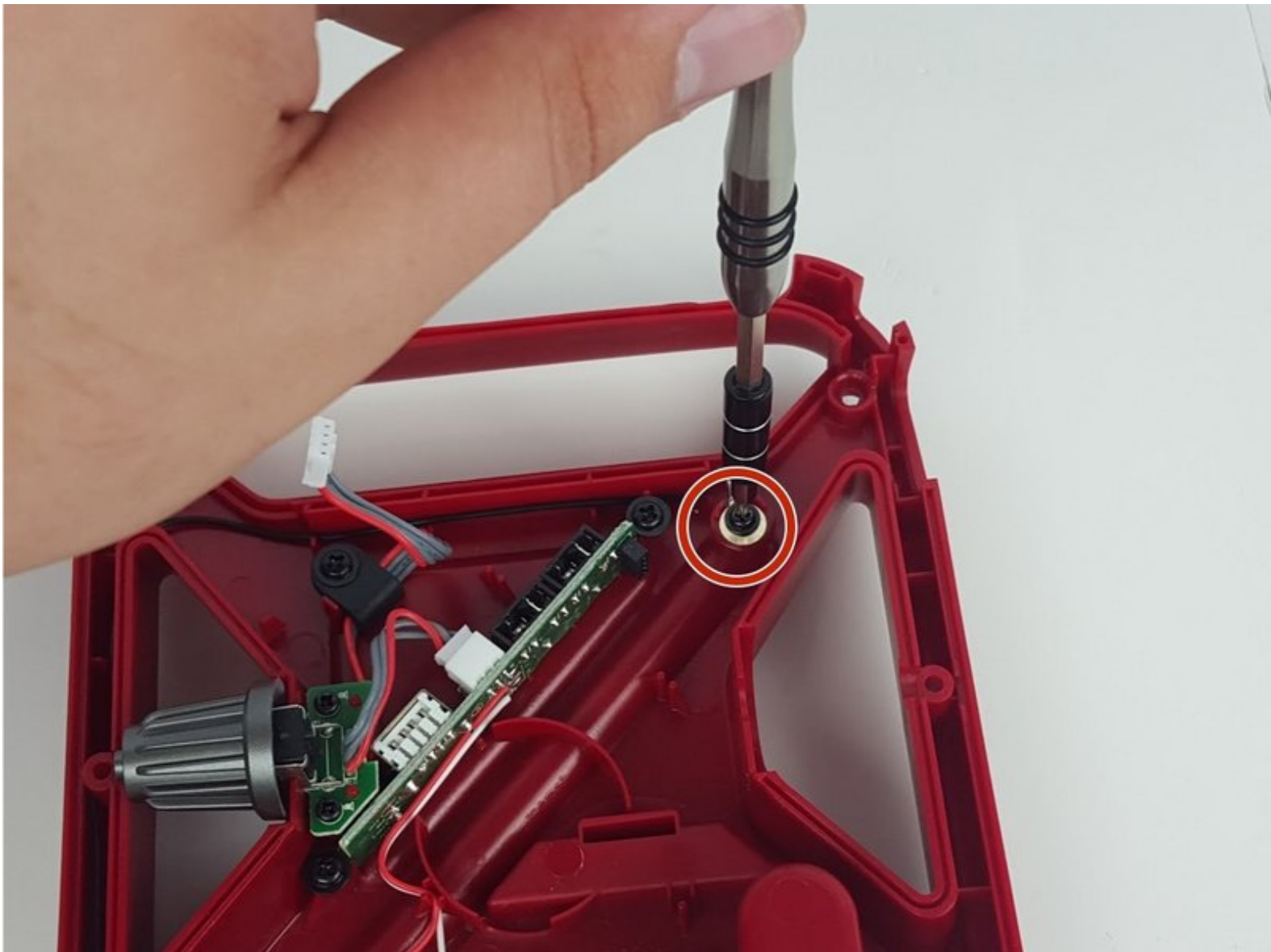




Eton FRX3 FM Radio Antenna Replacement

Replace the FM radio antenna of the Eton FRX3.

Written By: Md Siamul Islam



INTRODUCTION

While unlikely, your FM antenna may become damaged at some point. If it is, you'll either hear background noise or suffer a loss of signal entirely. In such a case you may need to replace the antenna to bring it to working order.



TOOLS:

- [iFixit Opening Tools](#) (1)
 - [Phillips #00 Screwdriver](#) (1)
 - [Phillips #0 Screwdriver](#) (1)
 - [Phillips #1 Screwdriver](#) (1)
 - [T10 Torx Screwdriver](#) (1)
-

Step 1 — Rechargeable Battery Pack



- Pull the plastic tab on the battery compartment cover panel to loosen it, then pull the panel off.

Step 2



- Disconnect the battery pack wires from the device and remove the battery pack.

Step 3 — Case Assembly



- On the bottom of the device case's face are two T10 screws. Use a T10 Torx screwdriver to remove the two screws.

Step 4



- While using the T10 screwdriver, remove the two T10 screws on the back of the device's case.

Step 5



- Remove the two Phillips #00 screws located in the center of the back of the device.
- ⓘ You will need to use a thin shafted screwdriver or a female hexagonal bit that is found in the iFixit 54 bit toolkit to extend the reach of the Phillips #00 bit.

Step 6



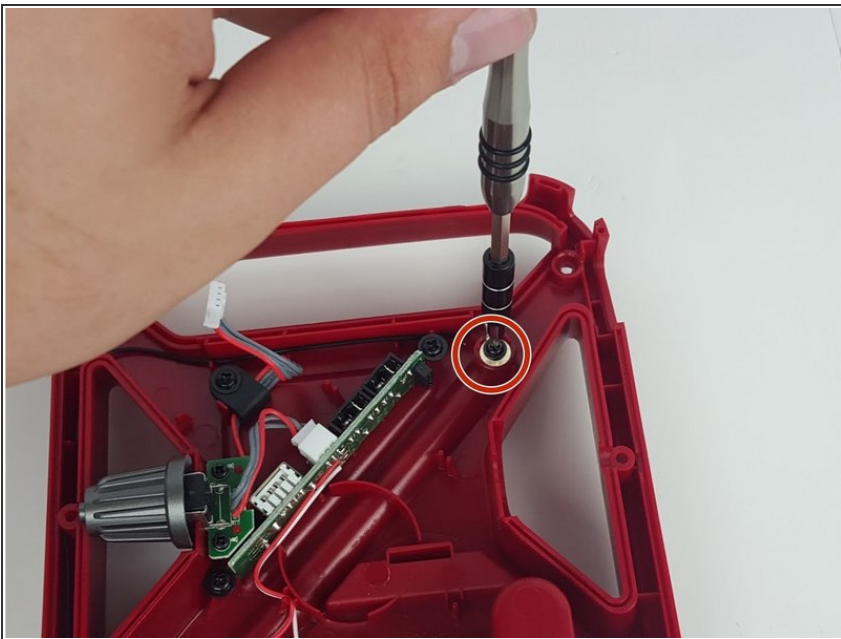
- On the bottom of the device's case there are two rubber feet. Pry the rubber feet off of the case.
- ★ Try to keep the adhesive on the rubber feet as clean as possible to insure that they can be reattached during reassembly.

Step 7



- Pull the two halves of the device's case apart.
- ⚠ Take care when pulling the two halves apart. There are three cables that connect components of the device to the motherboard. Disconnect these cables in order to separate the two halves of the device's case.

Step 8 — FM Radio Antenna



- Remove the Philips #1 screw, securing the FM radio antenna to the case.

Step 9



- From the back of the device, gently pull the antenna out of the device case.

To reassemble your device, follow these instructions in the reverse order.