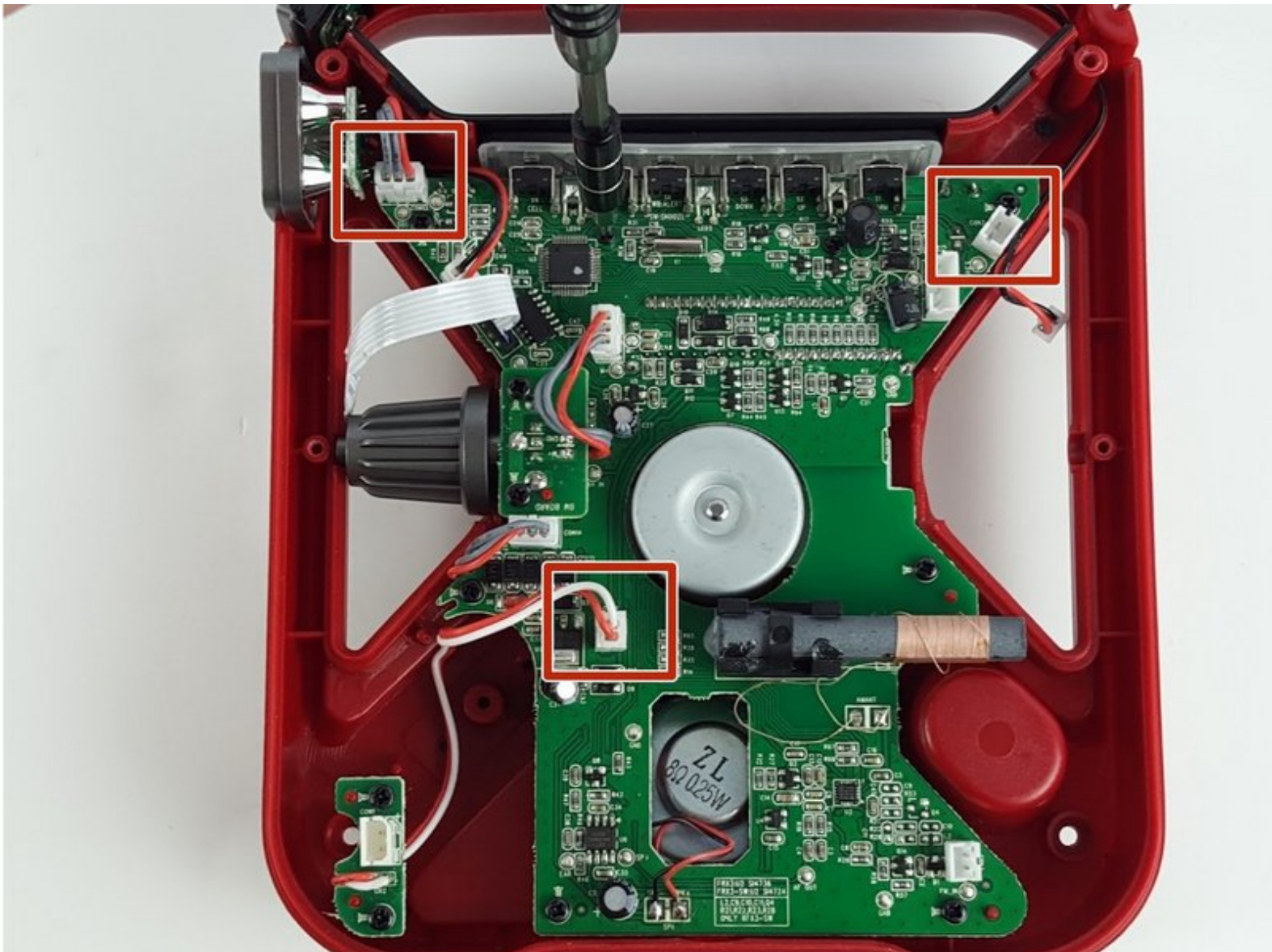




Eton FRX3 Motherboard Assembly Replacement

Prerequisite Only

Written By: Azhar Albusaidi



INTRODUCTION

Prerequisite Only



TOOLS:

- [64 Bit Driver Kit](#) (1)
 - [iFixit Opening Tools](#) (1)
-

Step 1 — Rechargeable Battery Pack



- Pull the plastic tab on the battery compartment cover panel to loosen it, then pull the panel off.

Step 2



- Disconnect the battery pack wires from the device and remove the battery pack.

Step 3 — Case Assembly



- Use the T10 hexagonal tip from the iFixit Bit Driver Kit or comparable tool to remove the two 22 mm hexagonal screws on the front face of the device.

Step 4



- Remove the two 22 mm hexagonal screws on the upper rear of the device.

Step 5



- Use a long, slender screwdriver to reach and remove the two 10 mm Phillips #00 screws recessed deep in the body of the device.
- ⓘ If you're using the 54-bit toolkit, the female hexagonal bit can be used to extend the reach of the Phillips #00 bit.

Step 6



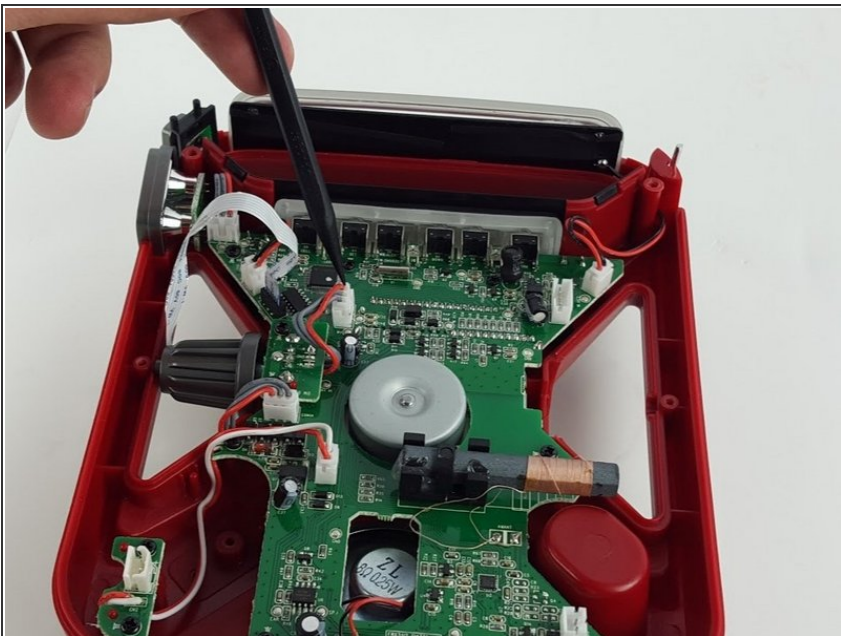
- On the bottom of the device are two rubber feet. Using the blue plastic opening tool, pry them up and pull straight off.
- ✦ It's best to place these on their non-sticky side while you work, as you'll want them to keep as much tackiness as possible for reassembly.

Step 7



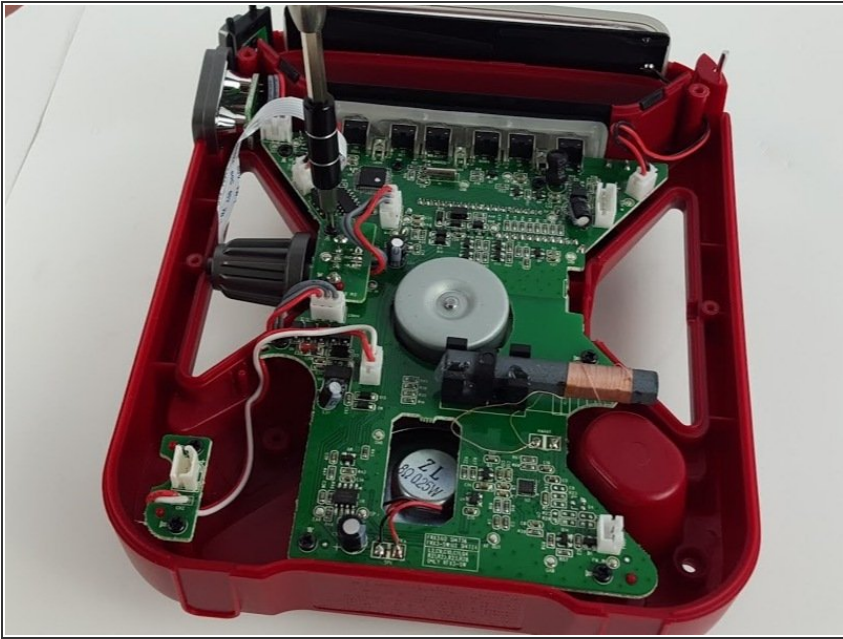
- Pull apart the two halves of the device at the seam.
- Three components from the back half will prevent you from fully opening the device, just unplug these connections as shown in the image.

Step 8 — Tuning Dial



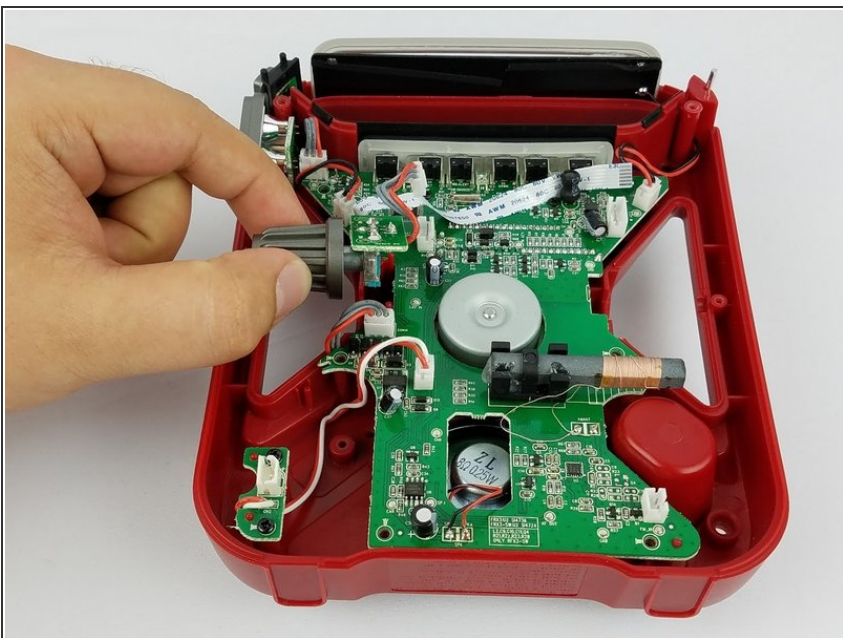
- Unplug the socket connection from the motherboard as shown in the image.

Step 9



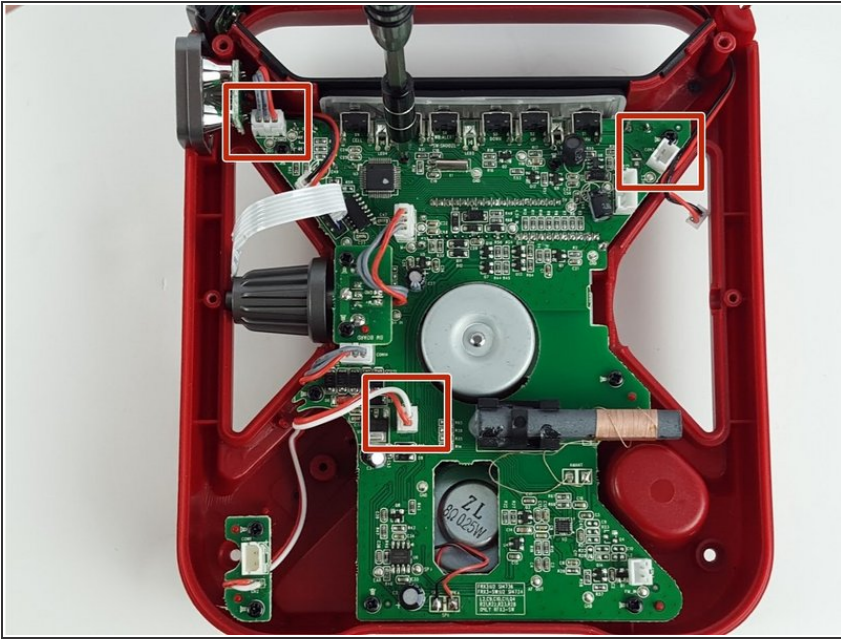
- Remove the two 1 cm Phillips #0 screws that secure the tuning dial panel to the motherboard.

Step 10



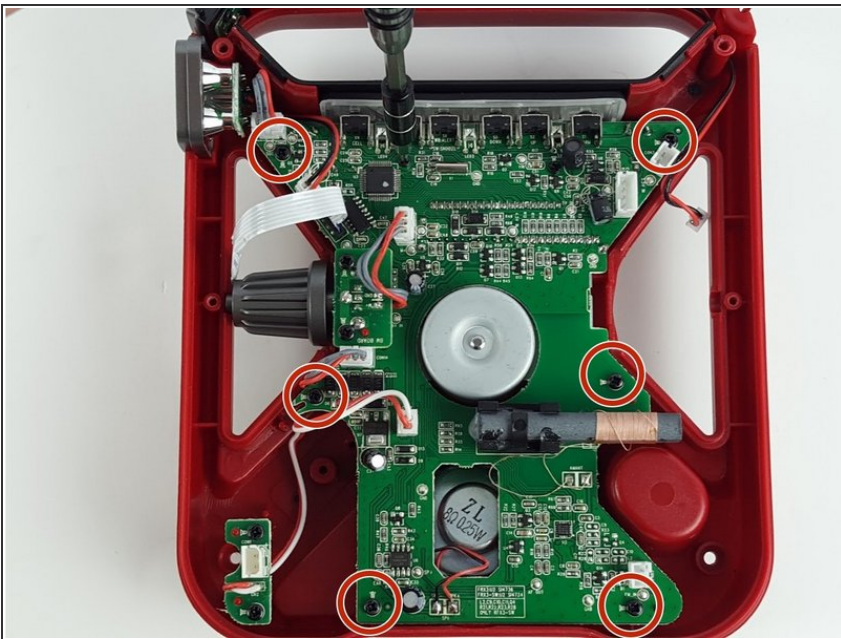
- Gently lift the dial upwards to remove it.

Step 11 — Motherboard Assembly



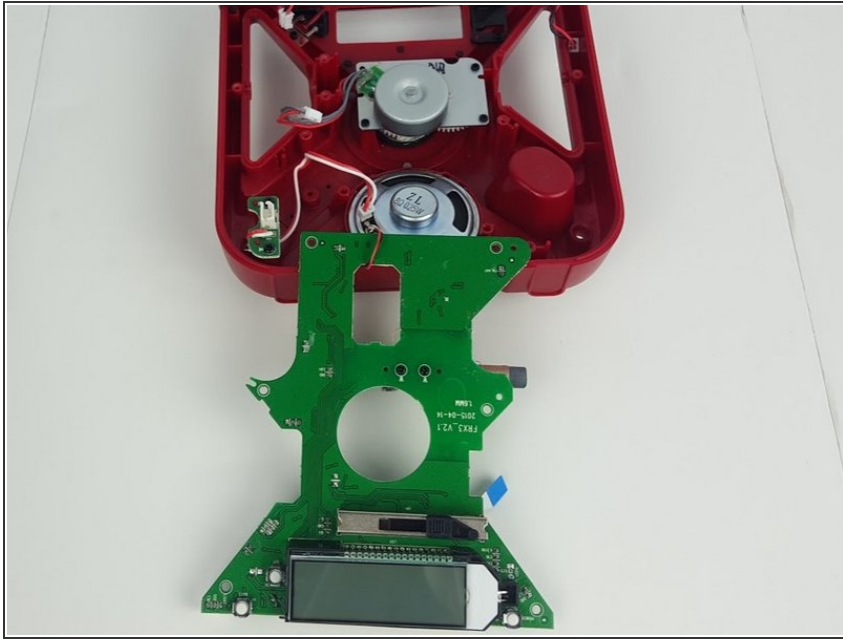
- Unplug all the component socket connections from the motherboard as shown in the image.

Step 12



- Remove the six 1 cm Phillips #0 screws that secure the motherboard to the case.

Step 13



- Fold the motherboard over the bottom of the device case.
- ⓘ Be careful not to damage the wires leading to the speaker.

To reassemble your device, follow these instructions in reverse order.