



Eton Soultra XL Woofer Wire Repair

Repair the connection to the woofer of the Eton Soultra XL.

Written By: Nate Kilmer



INTRODUCTION

The Eton Soulra XL has two woofers that are relatively easy to access and reconnect, should one become disconnected. This guide will provide step-by-step instructions to disassemble, clean, and repair loose connections. You will need to know how to solder; review [How To Solder and Desolder Connections](#) if you are unfamiliar with the process.



TOOLS:

- [Phillips #0 Screwdriver](#) (1)
 - [Soldering Workstation](#) (1)
 - [Compressed Air](#) (1)
 - [2.5 mm Hex Bit](#) (1)
 - [T6 Torx Screwdriver](#) (1)
 - [Spudger](#) (1)
-

Step 1 — Eton Soulra XL Woofer Wire Repair



- Gently pull down and out on the front cover; it should come off easily.
- ⓘ This step is not necessary; if the cover does not come off easily it can be left on.

Step 2



- Remove two screws from each side using a H2.5 hexagonal screwdriver.

Step 3



- Pry off "Eton" logo from the side speaker covers using a pry tool.

⚠ Be careful not to break the emblem when removing.

Step 4



- Remove the two screws that were covered by the "Eton" logo using a PH0 screwdriver.

Step 5



- The side speaker covers should come off easily now; remove them.

Step 6



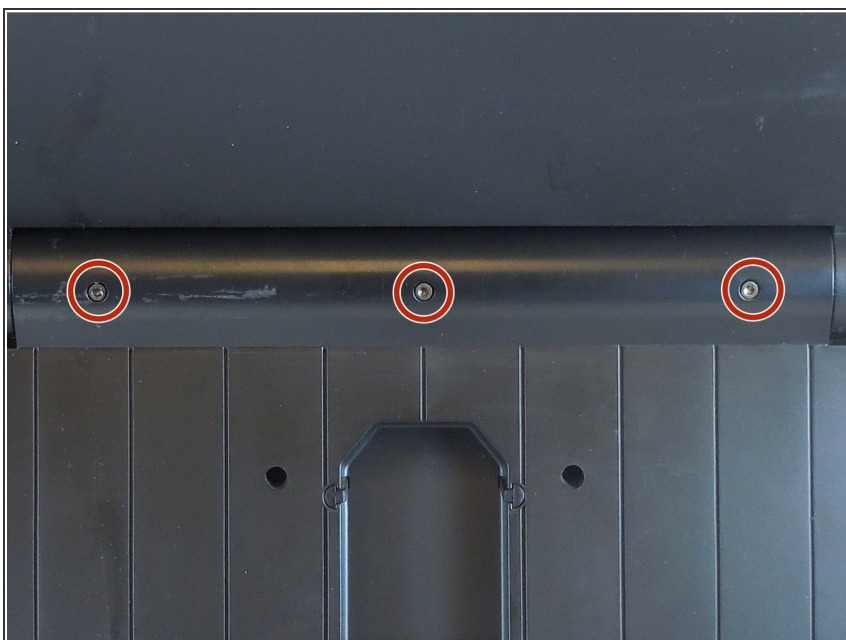
- Remove the five screws on the underside of the device using a PH0 screwdriver.

Step 7



- Extend the solar panel into the upright position to access the screws on the backside of the device.

Step 8



- Remove the three screws at the top of the back panel using H2.5 hexagonal screwdriver.

Step 9



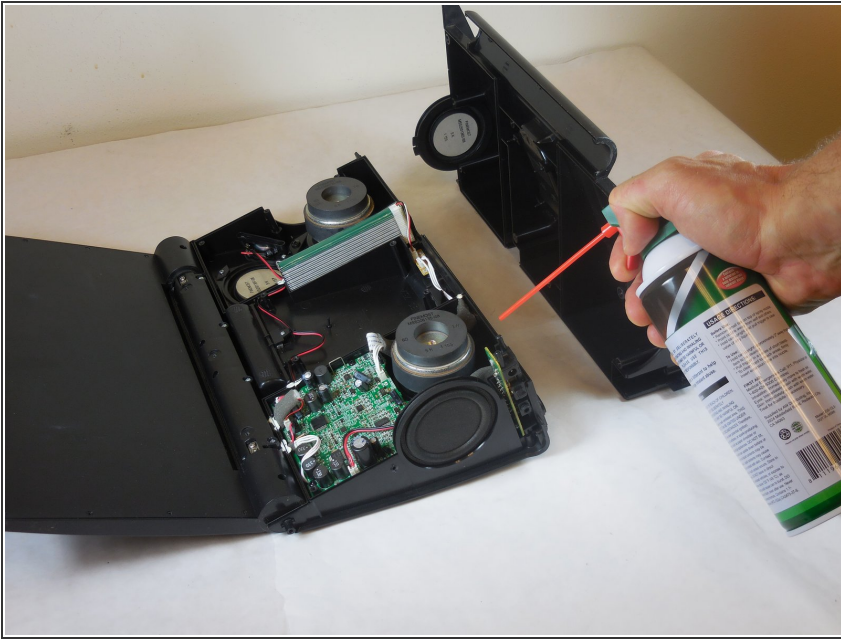
- Remove the ten screws on the backside of the device using a long-neck PH0 screwdriver.
- ⓘ Some of the screws are deep within the panel and require an appropriate (long neck PH0) screwdriver to access them.

Step 10



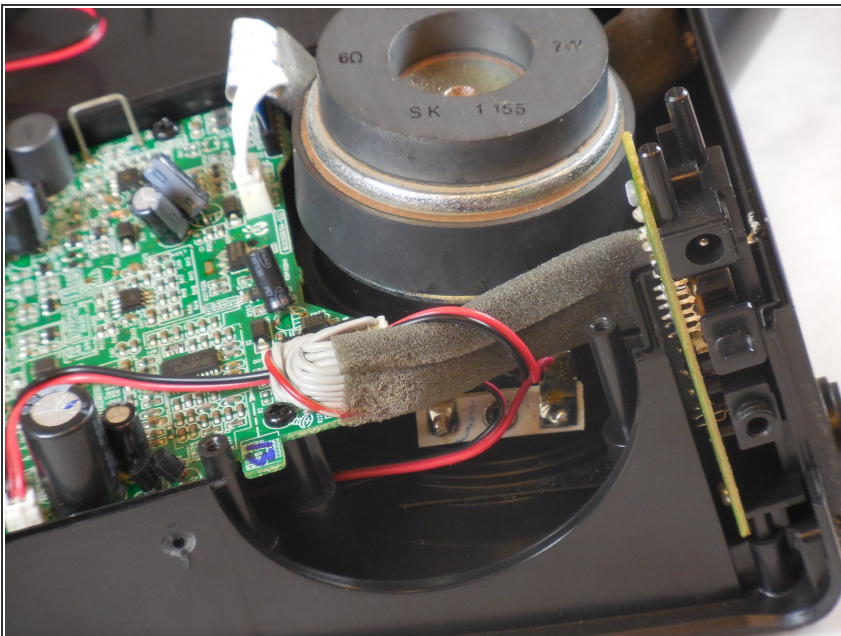
- At this point, the back panel of the device should lift off easily. Lift it off and set aside.

Step 11



- Use compressed air to clear away any dust or debris.

Step 12



- Inspect wires and locate any speaker loose connections.

Step 13



- Solder loose wires back into place.
- ⓘ Use the methods outlined in the ifixit soldering guide ([link in the introduction](#)).

To reassemble your device, follow these instructions in reverse order.