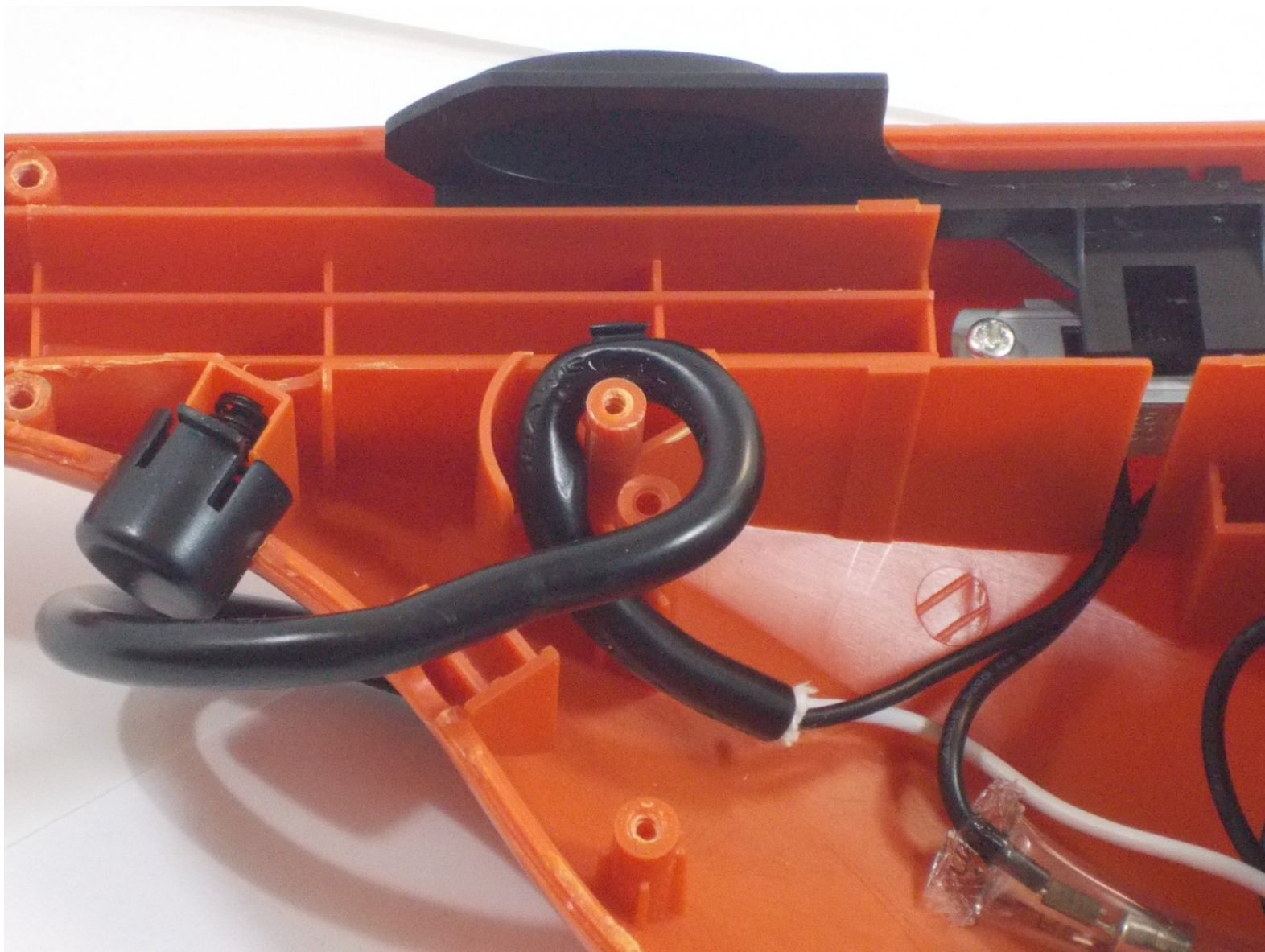




# Eureka 1660SP External Start Switch Realignment

This guide displays how to realign an out-of-place start switch helps turn on the vacuum.

Written By: Evan Fodi






## TOOLS:

- [Phillips #2 Screwdriver](#) (1)
-

## Step 1 — Motor Housing



 Before you start, make sure your vacuum is unplugged the power outlet.

- Press and hold down the black button below the handle while pulling the pole out.

## Step 2



- Press the black separator switch to separate the top and bottom halves of the vacuum.

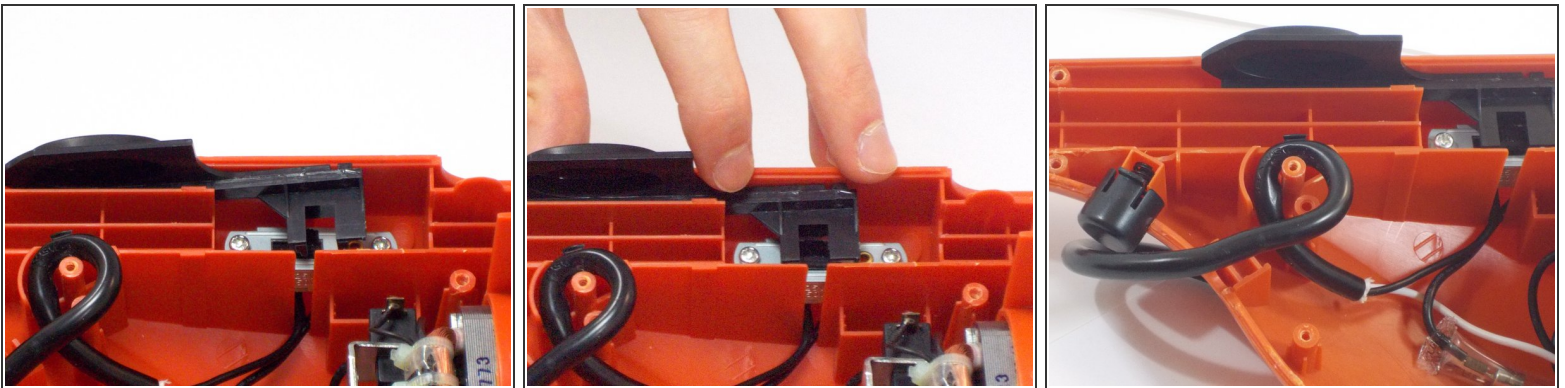


### Step 3



- Use a #2 Phillips head screwdriver to remove six 13.9mm screws from the side of the motor housing (top half) as shown.
  - Remove two 14.1mm screws from the front face of the housing. You are now all set to open the housing.
- ⚠ Keep a watchful eye on the two screws from the front face. These two have additional collars to their necks and will not fit in any of the other holes, yet no other screw will fit in their spots without the collar.

### Step 4 — Realignment of plastic start switch piece



- If the external switch is slightly misaligned as shown, realign it with the internal switch.
- ☑ Make sure the spring loaded button on the underside of the housing is intact when reassembling the motor housing. It is prone to eject when opening the motor housing.

To reassemble your device, follow these instructions in reverse order.