



# Eureka 402A Mini Light Upright Vacuum Belt Replacement

How to replace a Eureka 402A Mini Light Upright Vacuum belt.

Written By: Cassandra Coltrane



## INTRODUCTION

Throughout this repair, you will be guided to complete a belt replacement for the Eureka 402A Mini Light Upright Vacuum. This may be completed in a few steps and is a fairly simple repair.



### TOOLS:

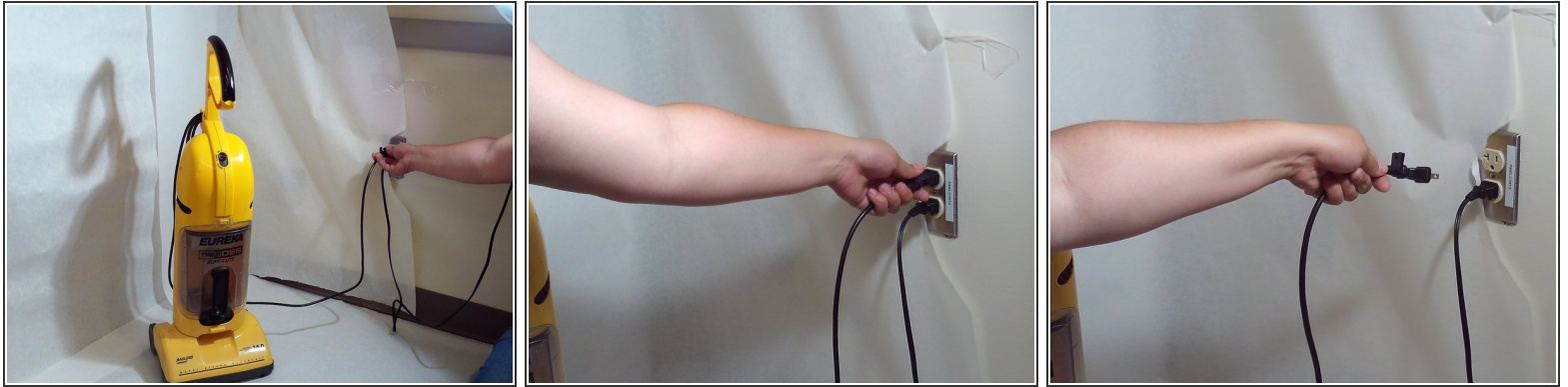
- [Phillips #2 Screwdriver](#) (1)



### PARTS:

- [E60957 vacuum belt](#) (1)

## Step 1 — Belt



- Turn off and unplug the vacuum, you can then begin the belt replacement.

⚠️ Avoid electrocution or any other injuries by doing so.

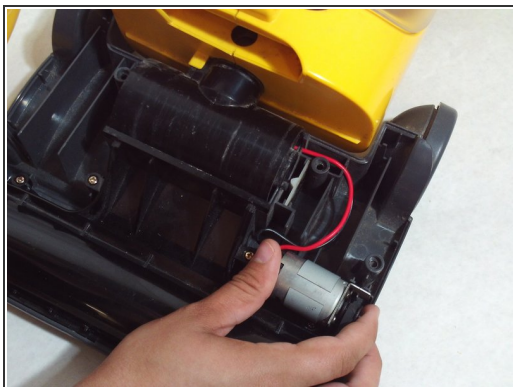
## Step 2




- Rotate the vacuum faced down. With your Phillips screwdriver, remove the following four screws.
- To remove the yellow housing, lift upwards.
- ⓘ Remember of where each of the screws you remove belong, separate them accordingly.



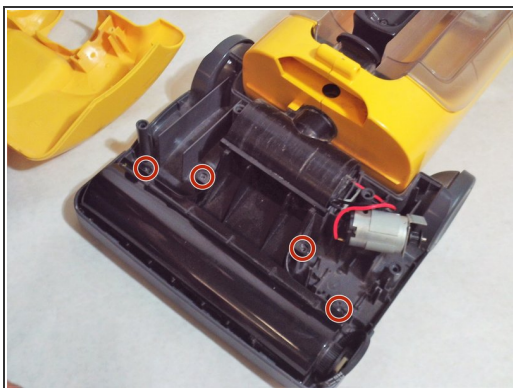
## Step 3



- Remove the metal motor simply by gripping each end and pulling upwards.

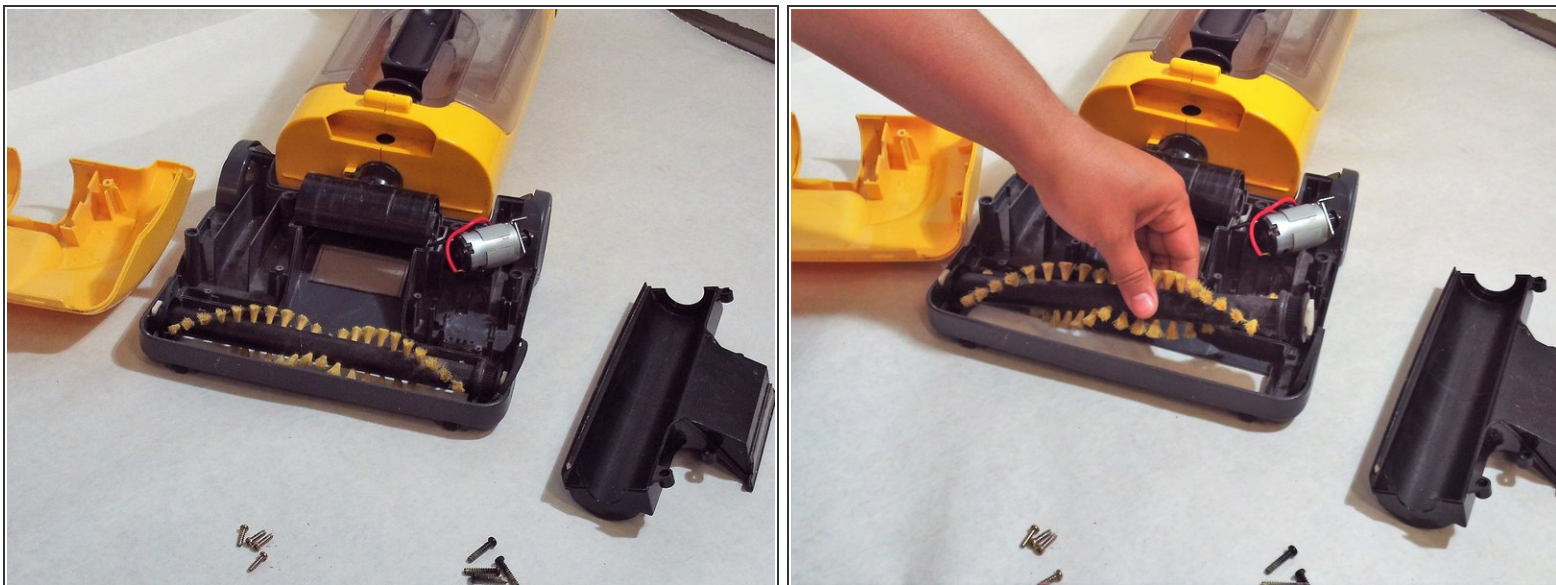
 This will release the connection to the vacuum belt.

## Step 4



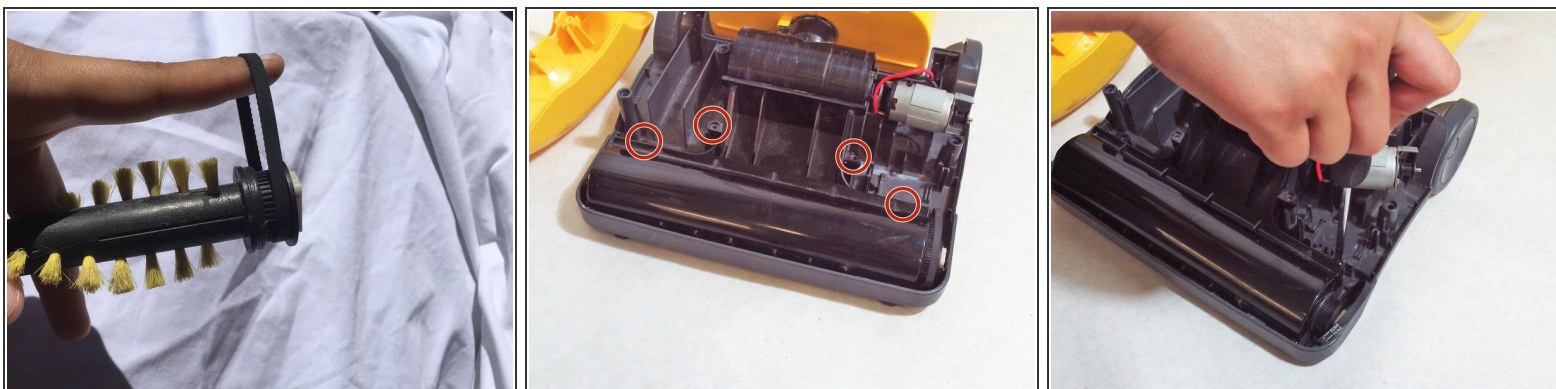
- Unscrew the four screws from black roller housing, then remove by lifting up.

## Step 5



- Raise the side of the brush which is connected to the vacuum belt.

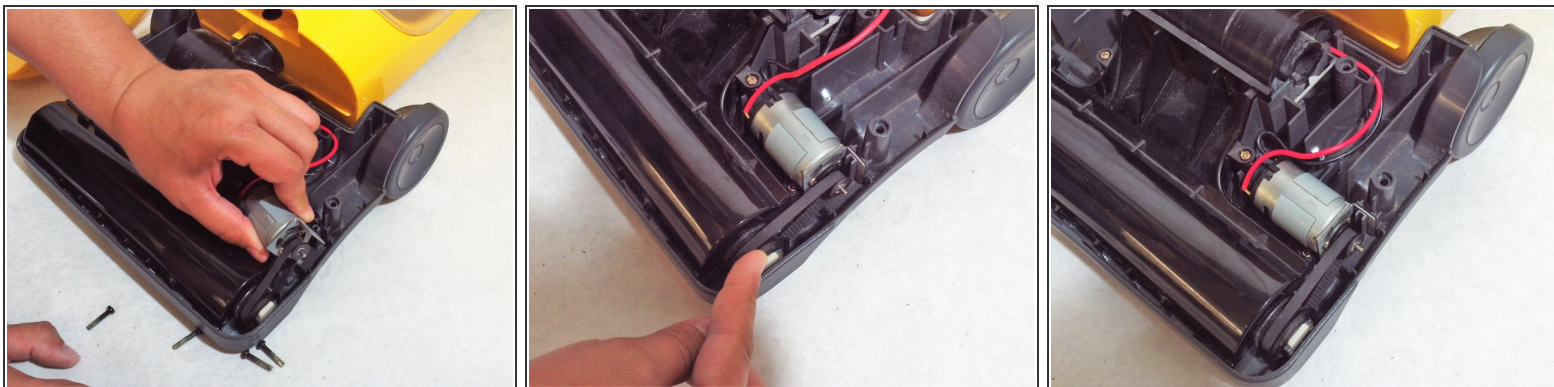
## Step 6



- After the brush has been removed, replace the vacuum belt.
  - Following the replacement of the belt, secure the brush back into housing.
  - Place the black cover back on the housing, and secure with screws.
- ⚠ Make sure screws are tightly wound. A loose screw can cause a loss of suction.



## Step 7



- Stretch and wind the belt onto the motor notch.
- Replace the motor back into position, then check the movement of the belt.
- ⓘ Belt should easily rotate.
- ⚠ Check to make sure wiring is connected properly and not misplaced.

## Step 8



- Lock in the yellow housing on front face of the vacuum by pressing and linking it to the grey notches.

## Step 9



- On the back side of the vacuum, secure housing by screwing in the grey cover.

**i** Ensure all screws are wound tightly.

## Step 10



- Check by plugging in and turning on the vacuum.

**i** The repair is complete.

To reassemble your device, follow these instructions in reverse order.