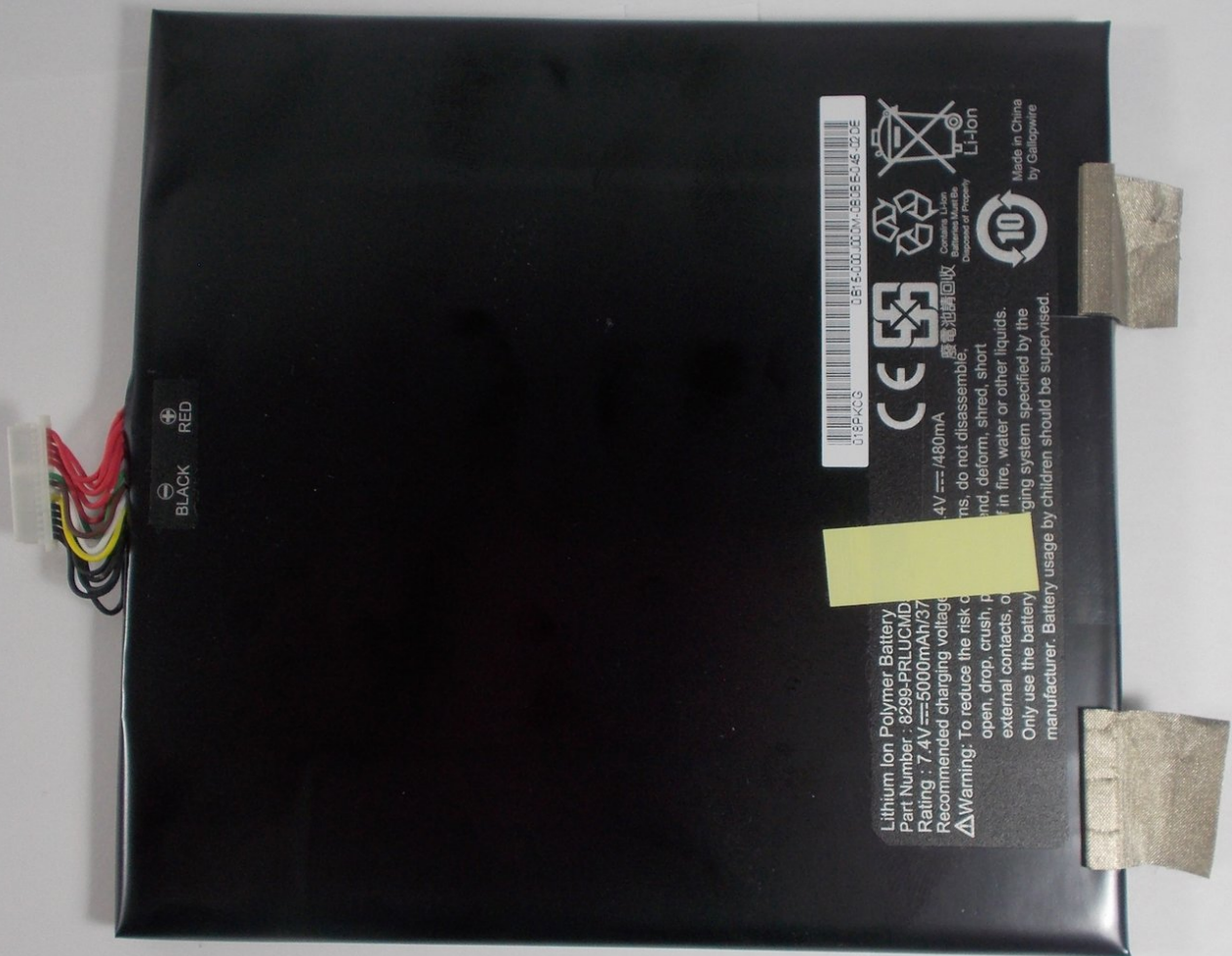




ExoPC Slate Battery Replacement

Bring your ExoPC Slate back to life by replacing the malfunctioning battery.

Written By: Aaron Moore



INTRODUCTION

One of the most common issues that plagues tablets and other mobile devices is that their battery degrades overtime. This results in the device being unable to hold a charge. In this case, replacing the battery is the best option.



TOOLS:

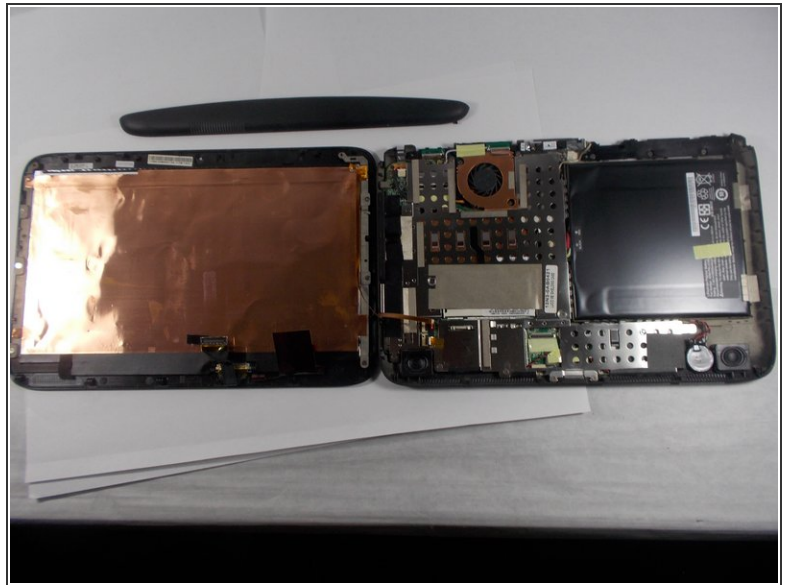
- [Phillips #00 Screwdriver](#) (1)
-

Step 1 — Battery



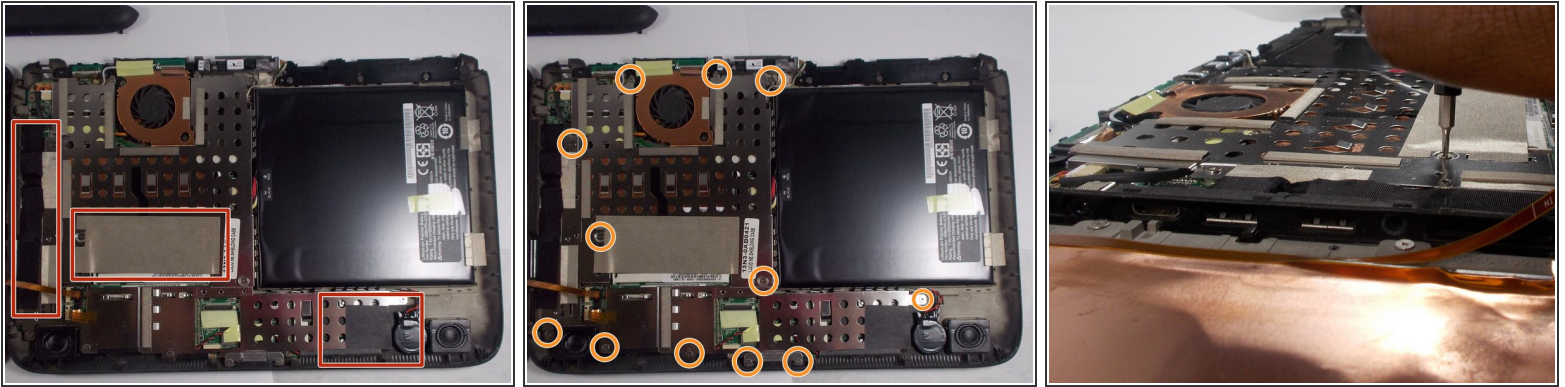
- Turn the PC on its back with the screen facing down and pull on the piece of plastic shown in the image. Use your fingernails to prod into the depression where the two plastic covers meet.

Step 2



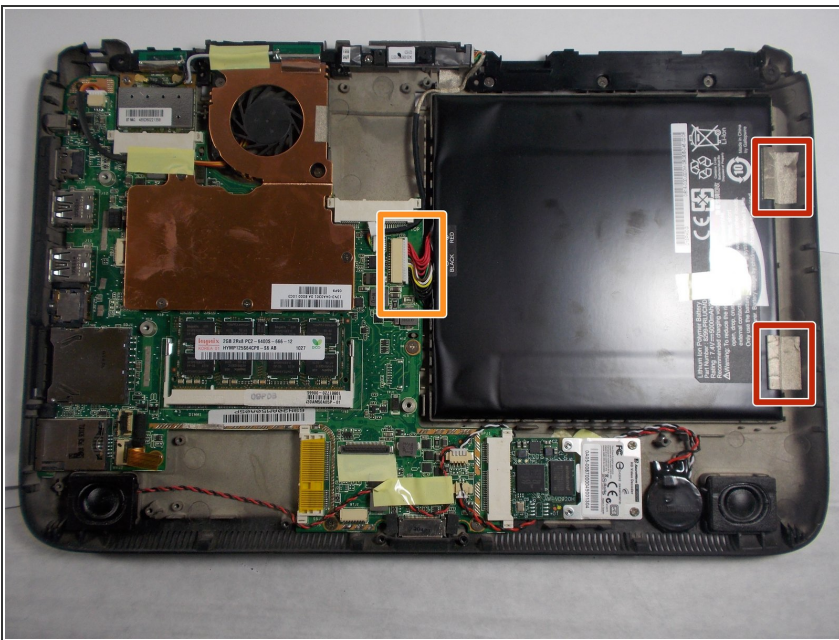
- Using the 00 Phillips screwdriver remove the two screws in the corners.
 - Using your left hand pull at the exposed section of the PC while simultaneously pushing the right with the thumb of your other hand. This will release the plastic clips allowing back cover to slide off, as shown from the picture
- ⚠ When removing the back cover make sure that the ribbon connectors going to the screen are not damaged. Carefully fold over the cover like a book.

Step 3



- Remove the tape covering the metal shield as shown in the image.
- Remove the 12 screws using the Phillips #00 screwdriver.
- Dislodge the shield by pulling the prongs away from underneath the battery. The shield should come completely off.

Step 4



- Remove tape from the side of the battery.
- Disconnect the battery from the motherboard.
- Gently remove the battery.

To reassemble your device, follow these instructions in reverse order.