



Ezonics EZ-307 Main Board and USB Cable Replacement

This guide covers the disassembly of an Ezonics-E7-307, webcam and the replacement of the Main circuit board and USB Cable.

Written By: Lyndsi





TOOLS:

- [Phillips #0 Screwdriver](#) (1)
-

Step 1 — Get Tools



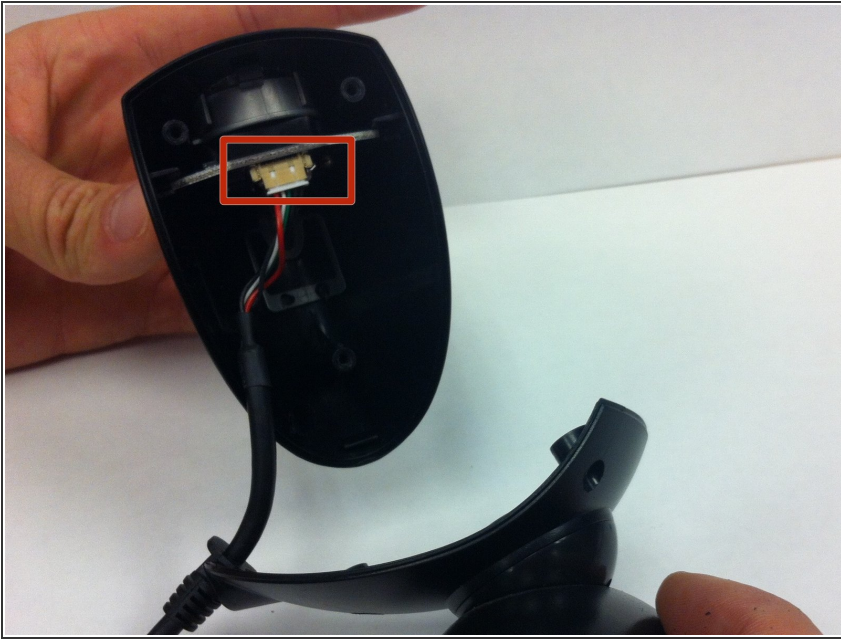
- A Phillips Head Size Zero Screw Driver

Step 2 — Detach the Base




- Using a Phillips-head screwdriver, remove each of the 3 screws from the underside of the camera head.

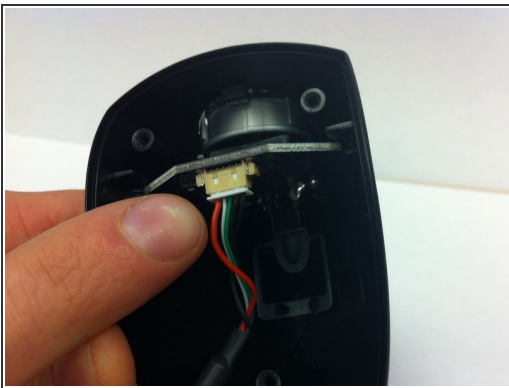
Step 3 — Set Aside the Base



- Gently pull back the base and set it aside.

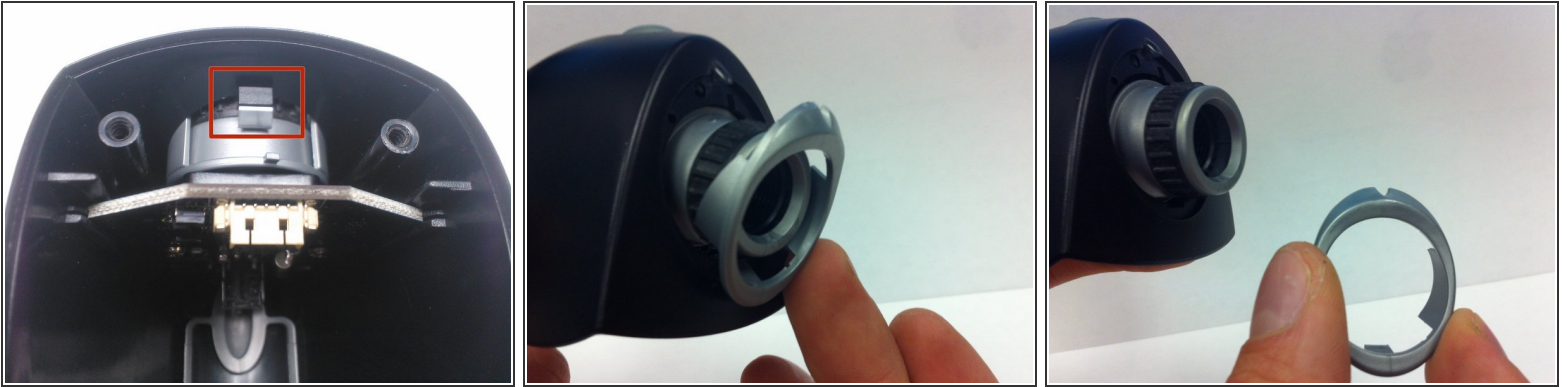
 Be careful not to pull out the USB cable attachment when taking off the base

Step 4 — Remove USB Connector



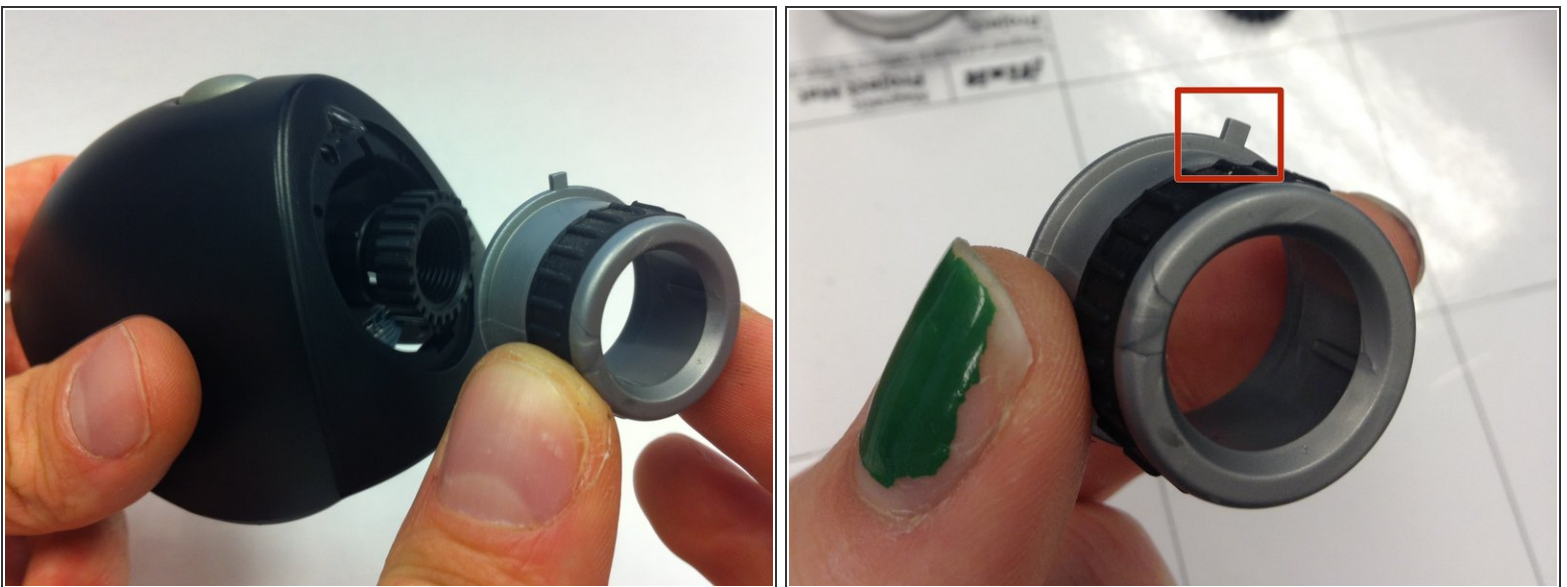
- Gently remove the white connector with the red, green, white & black cord with your fingers. This connector is the end of the USB cable.

Step 5 — Remove Top Lens Casing



- Press tab on inside of device to release silver ring.
- Gently remove top (silver) ring of lens casing with your fingers.

Step 6 — Remove Inner Lens Casing



- Gently remove inner casing of the lens (silver with a black ring).

⚠ Be **careful** not to break the small notch at the top, which holds the inner casing in place.

Step 7 — Remove the Inner Ring



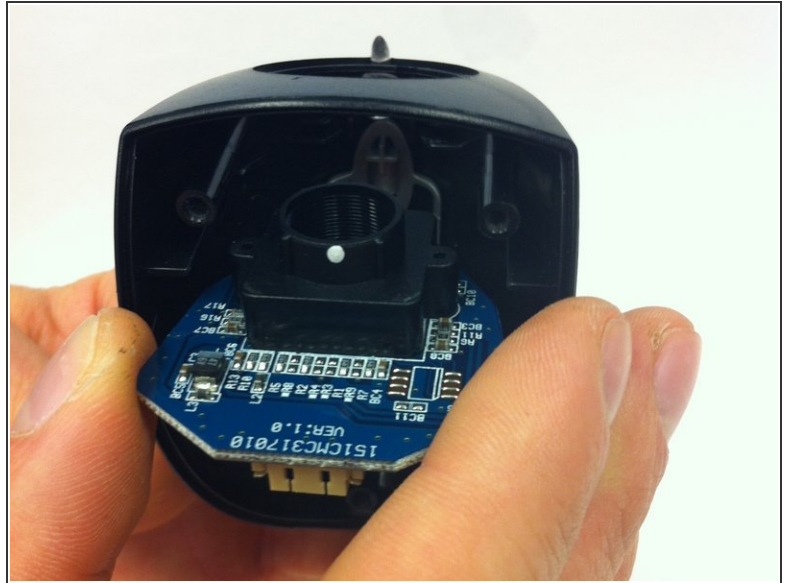
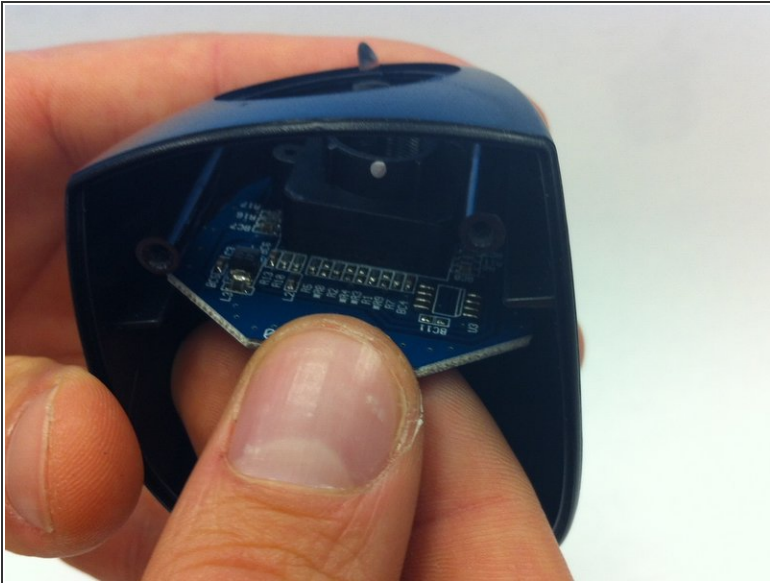
- Remove the small, black, ridged inner ring around the lens with your fingers.

Step 8 — Unscrew the Lens



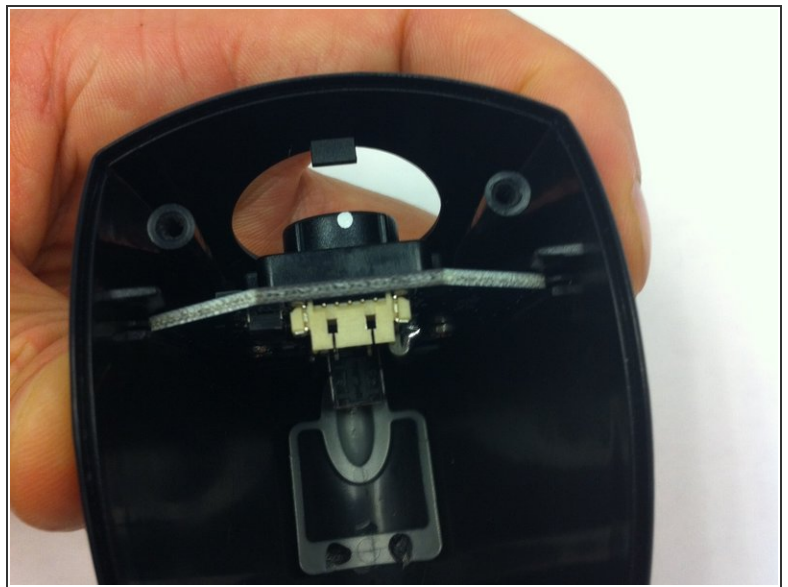
- Unscrew the lens counterclockwise with your fingers.

Step 9 — Carefully Remove Board From Outer Casing



- Turn the hollow outer casing so that you can see inside of it.
- Gently pull out main board with fingers.

Step 10 — A New Board



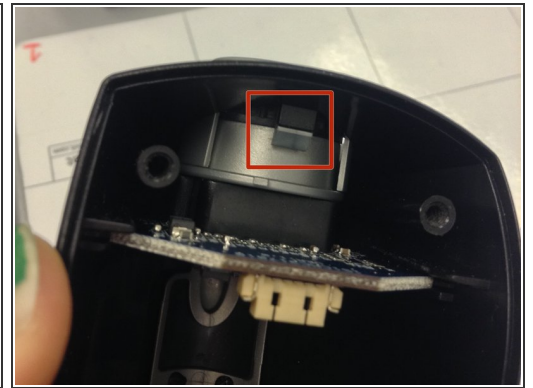
- Insert your new board into the outer casing. Be sure that it rests firmly between the sets of rails on either side.

Step 11 — Reassembly of Lens



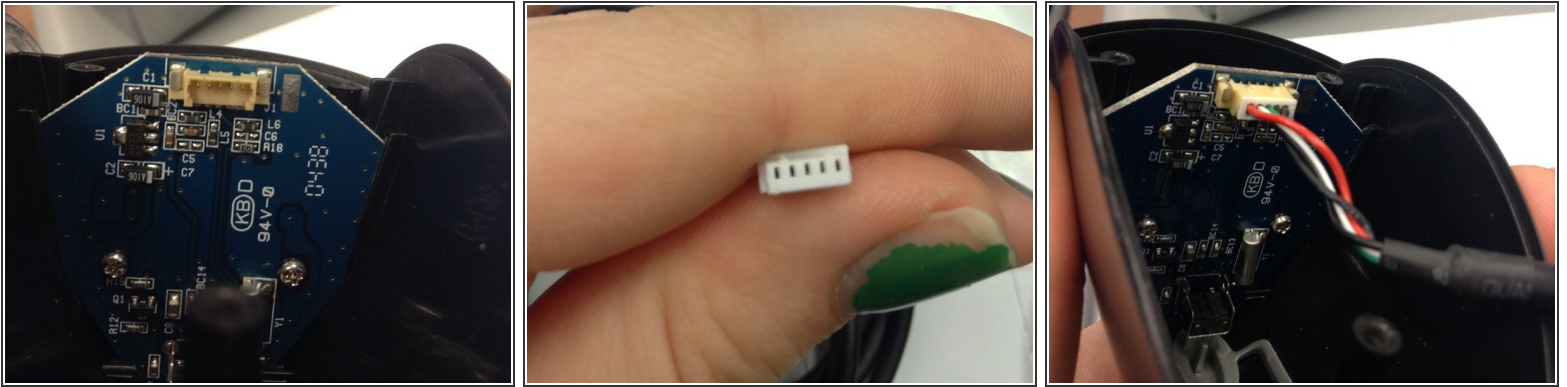
- Twist the lens piece in clockwise and then insert black ring around the lens.

Step 12 — Reassemble the Lens



- Line up notch on inner lens casing (silver with black ring) with notch on body of camera. Gently push it into place, being sure not to break the notch.
- Insert the silver ring. You should hear it click into place.

Step 13 — Insert the USB Cord



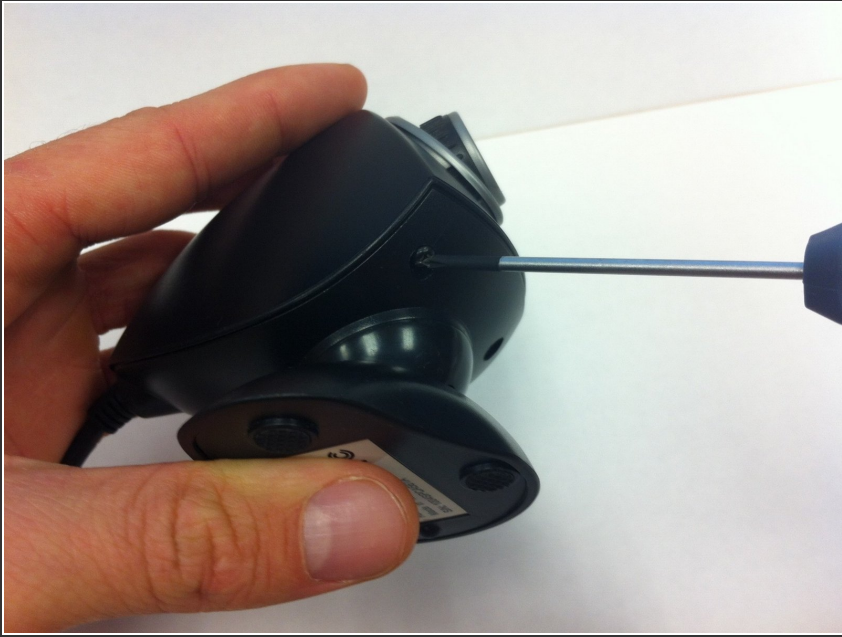
- Hold the camera in one hand with the hollow side facing up.
- Hold the USB cable in your other hand with the four small holes facing up.
- Plug the USB cable into the port.

Step 14 — Reassemble the Base of the Camera



- Lay the USB cord in the notch at the base of the camera bottom.
- Place the bottom back onto the camera top.

Step 15 — Reassemble the Base of the Camera



- Line up the base of the camera with the screw holes.
- Use a Phillips-head screwdriver to twist the three screws back into place.

To reassemble your device, follow these instructions in reverse order.