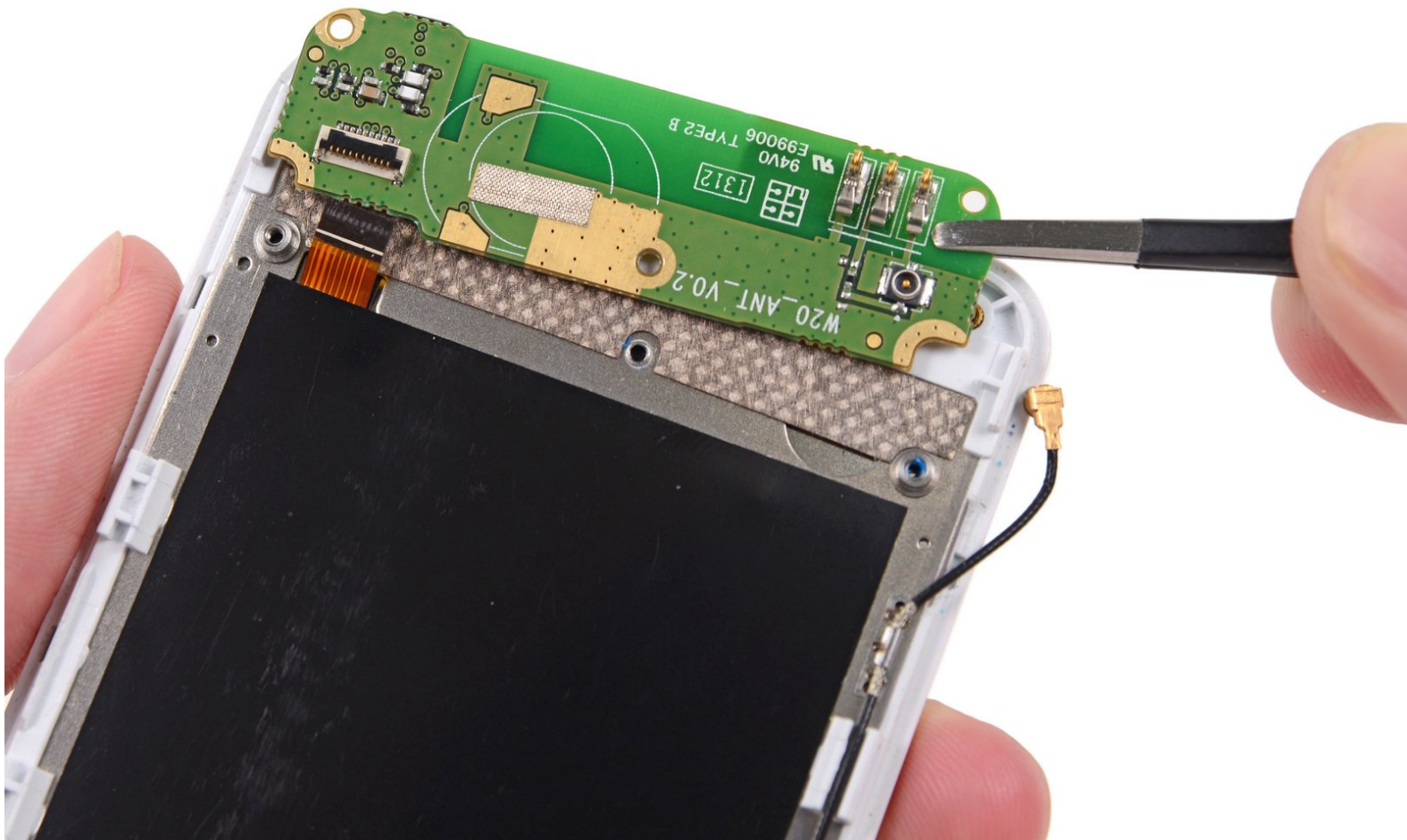




Fairphone 1 Wi-Fi Antenna Daughterboard Replacement

Replace the Wi-Fi Antenna Daughterboard in your Fairphone.

Written By: Andrew Optimus Goldheart



INTRODUCTION

Use this guide to replace the Wi-Fi antenna daughterboard in your Fairphone.




TOOLS:

- [iFixit Opening Picks set of 6](#) (1)
 - [Phillips #000 Screwdriver](#) (1)
 - [Spudger](#) (1)
 - [Tweezers](#) (1)
-

Step 1 — Back Cover



 There is a small indentation in the side of the phone near the bottom of the back cover.

- With the indentation as leverage, use your fingernail to pry the bottom portion of the back cover from the phone.

Step 2



- Slide the back cover down and remove it from the phone.

Step 3 — Battery



- i** There is a small indentation in the back of the phone just below the battery.
- Use a fingernail in this indentation to push the battery toward the top of the phone
 - Pull the battery out away from the phone.

Step 4



- Remove the battery from your Fairphone.

Step 5 — SIM and MicroSD Card



- Use your finger to slide the SIM card straight down out of its tray.
- Remove the SIM card from your Fairphone.
- ⓘ Repeat this procedure if you have a second SIM card.
- ⚠ Be sure to remove all SIM cards before servicing your phone.

Step 6



- If you have a microSD card, use your finger to slide it straight out of its slot.
- Remove the microSD card from your phone.

Step 7 — Midframe Assembly



- Remove the five 3.9 mm Phillips #000 screws securing the midframe to the display assembly.

Step 8



- i** The midframe is secured to the display assembly by several small plastic clips.
- Use an opening pick to carefully pry the midframe away from the display assembly.
 - Start just below the volume rocker and work your way down toward the bottom of the phone, freeing the plastic clips along the side.

Step 9



- Carefully round the corner, separating the midframe from the display assembly.

Step 10



- ⓘ After rounding the next corner, the midframe should be free along the bottom and the sides.

Step 11



- Run the opening pick and pry along the top seam.

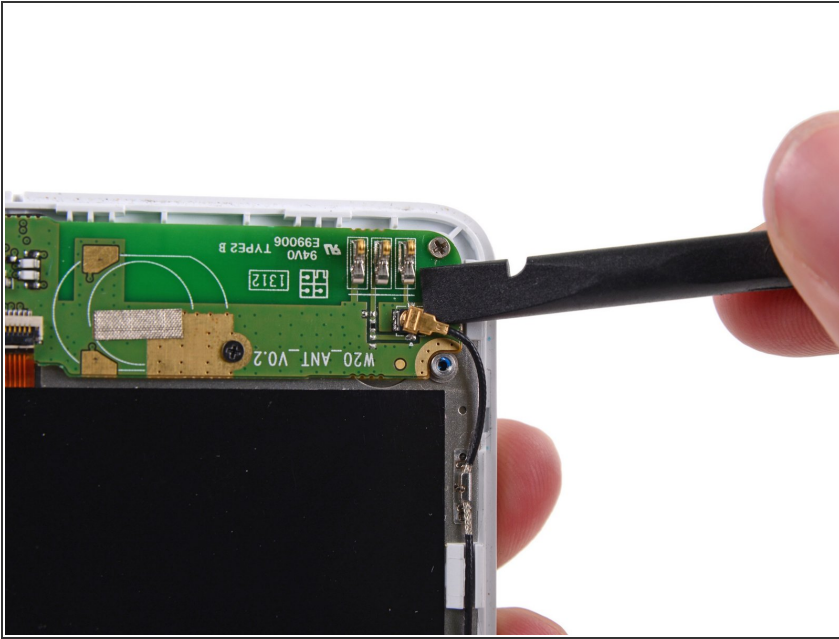
⚠ To avoid bending or damaging the opening picks, do not pry near to the power switch, USB port, or headphone jack.

Step 12



- Separate any remaining clips and remove the midframe from the phone.

Step 13 — Wi-Fi Antenna Daughterboard



- Use the flat end of a spudger to disconnect the antenna cable connector.

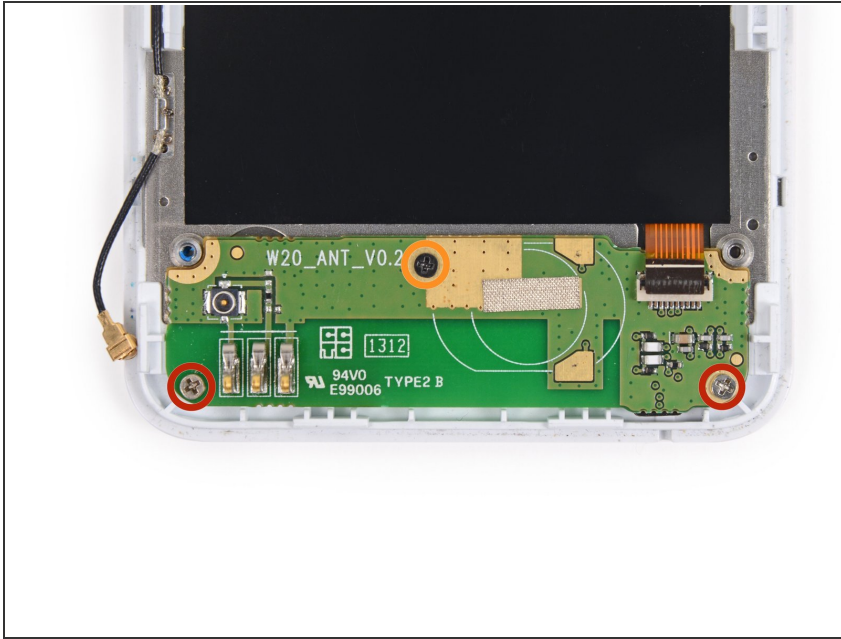
⚠ Be careful to pry on the connector, **not** the socket.

Step 14



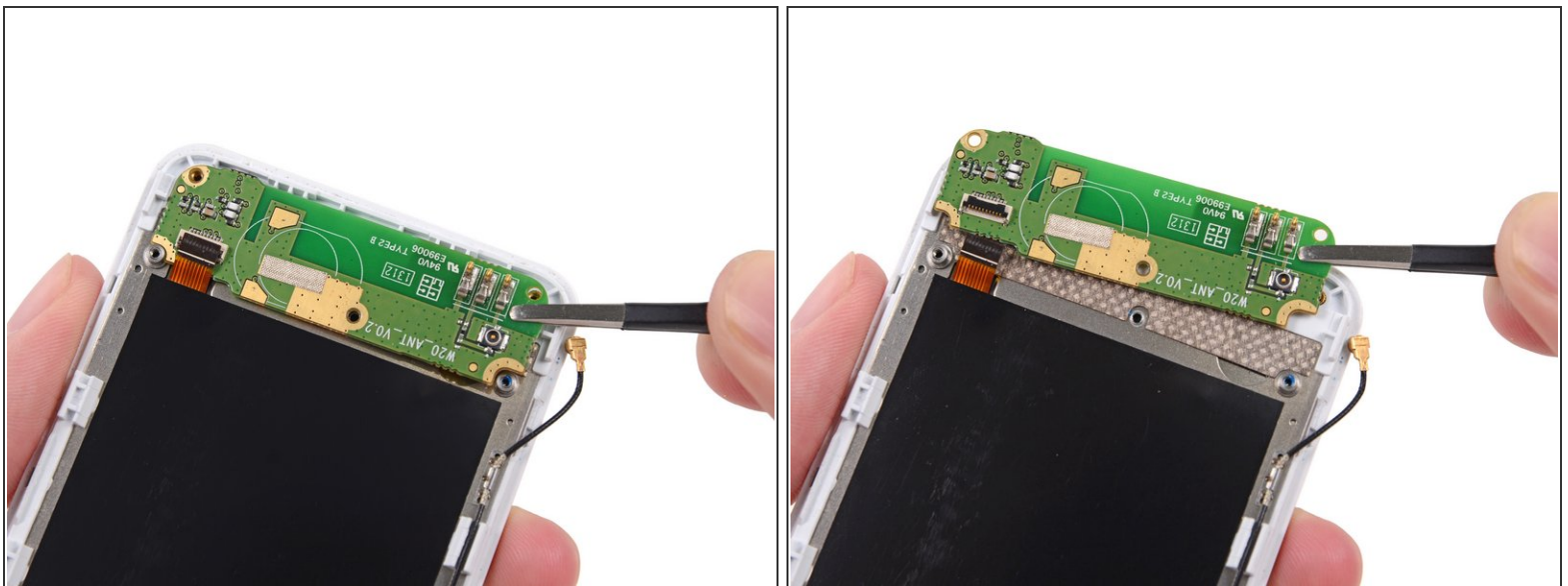
- Use the tip of a spudger to flip open the tab on the daughterboard data cable ZIF connector.
- Use tweezers to pull the daughterboard data cable away from its socket.

Step 15



- Remove the following screws securing the Wi-Fi daughterboard to the display assembly:
 - Two 2.5 mm Phillips #000 screws
 - One 1.6 mm Phillips #000 screw

Step 16



i The Wi-Fi antenna daughterboard is held to the front assembly by mild adhesive.

- Use tweezers to gently pry the board up and remove it from the phone.

To reassemble your device, follow these instructions in reverse order.