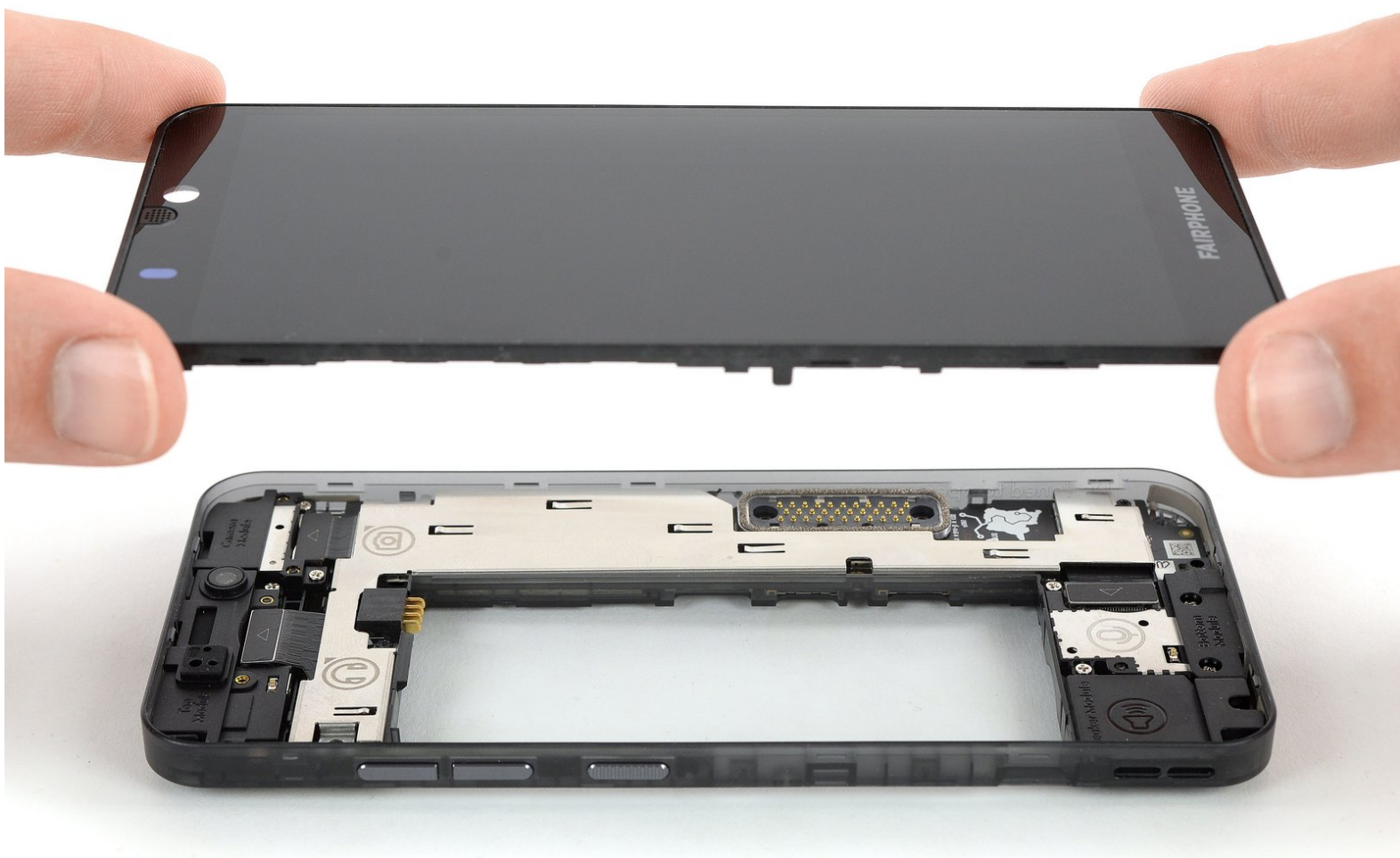




Fairphone 3 Display Module Replacement

This guide shows how to remove or replace a broken or defective display module of the Fairphone 3.

Written By: Dominik Schnabelrauch



INTRODUCTION

Use this guide to remove or replace a broken or defective display module in your Fairphone 3.



TOOLS:

- [Phillips #00 Screwdriver](#) (1)
- [iFixit Opening Picks set of 6](#) (1)



PARTS:

- [Fairphone 3 Display Module](#) (1)

Step 1 — Back Cover



 Power off your phone before beginning disassembly.

- Insert a thumbnail, or a prying tool like a spudger, into the notch at the bottom right of the back cover.
- Pry the back cover up to start separating its plastic clips.

Step 2



- Slide around the bottom right corner of the back cover to loosen the lower plastic clips.
 - Lift the back cover to release the rest of the plastic clips and remove it.
- ☒ To reinstall the back cover press it firmly into place until you hear a snap from the plastic clips to form a seamless connection with the rear side of the phone.

Step 3 — Battery



- Use a fingernail or a prying tool at the marked notch to lever the battery out of its recess.
- Lever the battery up until you can get a good grip.

Step 4



- Lift the battery out of its recess and remove it.

Step 5 — Display Assembly



- Remove the thirteen Phillips #00 screws (4 mm length).

Step 6



- Insert an opening pick between the midframe and the display module on the right edge of the phone.
- Slide the opening pick down to the bottom right corner to pry open the plastic clamps of the display module.

Step 7



- Slide the opening pick around the bottom right corner and use it to disengage the plastic clamps at the bottom of the display module.

Step 8



- Slide the opening pick along the left side to pry the display module up.
- ⓘ The display module should pop out of the midframe during this process. In case it doesn't, check for remaining clamps you might have missed.

Step 9



- Remove the display assembly.
- ☑ To reinstall the display-module press it into place on all sides until you can hear a snap from the plastic clamps to make sure it sits flush with the frame.

To reassemble your device, follow these instructions in reverse order.

Take your e-waste to an [R2 or e-Stewards certified recycler](#).