



# Fast Fix Lamp Pull Chain Replacement

With this guide, you will be able to repair a broken pull-chain on a lamp by using a chain connector and additional chain.

Written By: Anna Rill



## INTRODUCTION

Have you ever had a lamp's pull chain break on you, leaving you with no way to turn it on? We understand. That's why we made this guide to fix the on/off switch on a perfectly good lamp! This guide will help you in repairing a snapped ball chain, allowing you to, once again, turn your lamp on and then off again.



### PARTS:

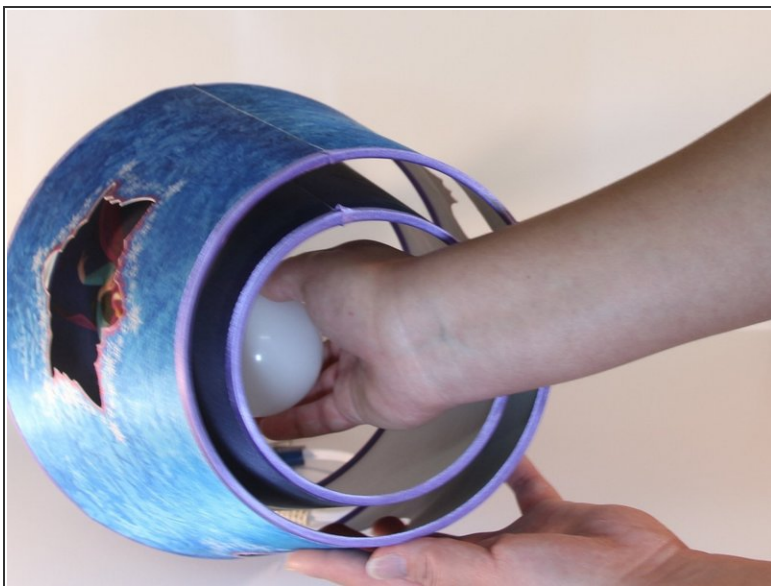
- [Ball Chain](#) (1)
  - [Ball Chain Connector](#) (1)
-

## Step 1 — Lamp Pull Chain



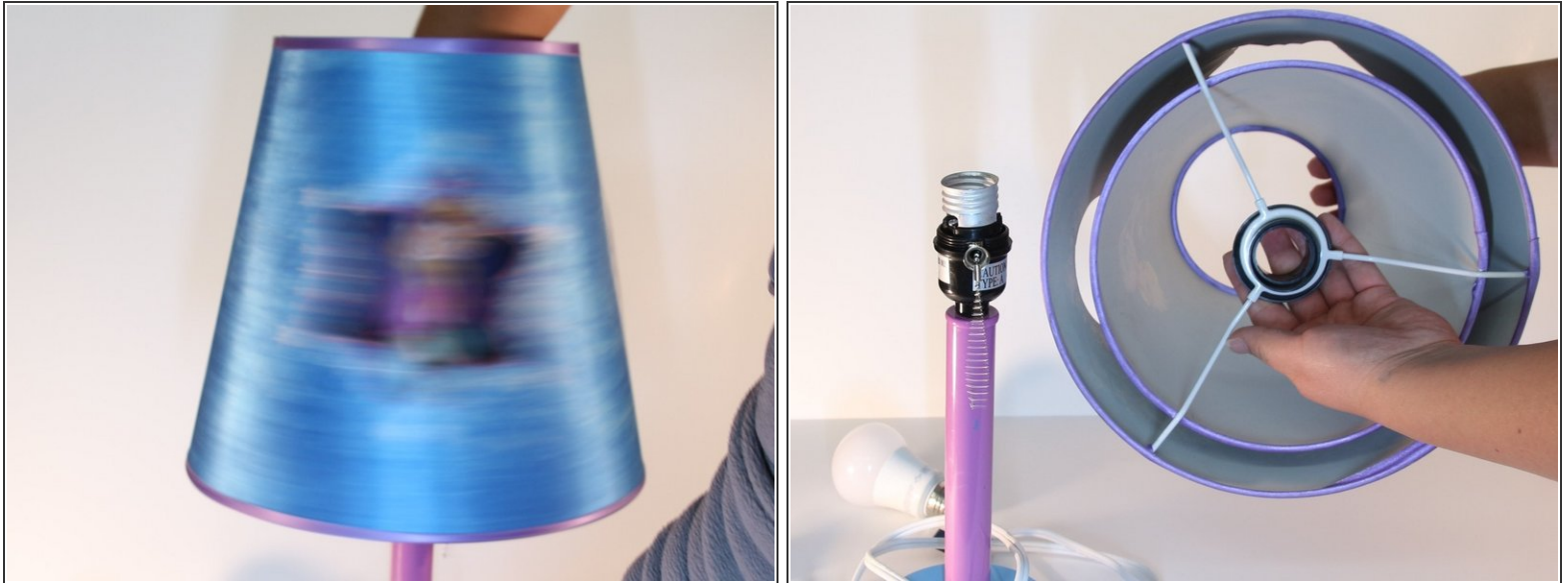
- Unplug the broken lamp and ensure you have all of the parts necessary for the repair.

## Step 2



- Remove the light bulb from the lamp.

### Step 3



- Unscrew the lamp shade from the base by turning it counter-clockwise.

### Step 4



- Gently pull the socket from the base to expose the broken chain section.

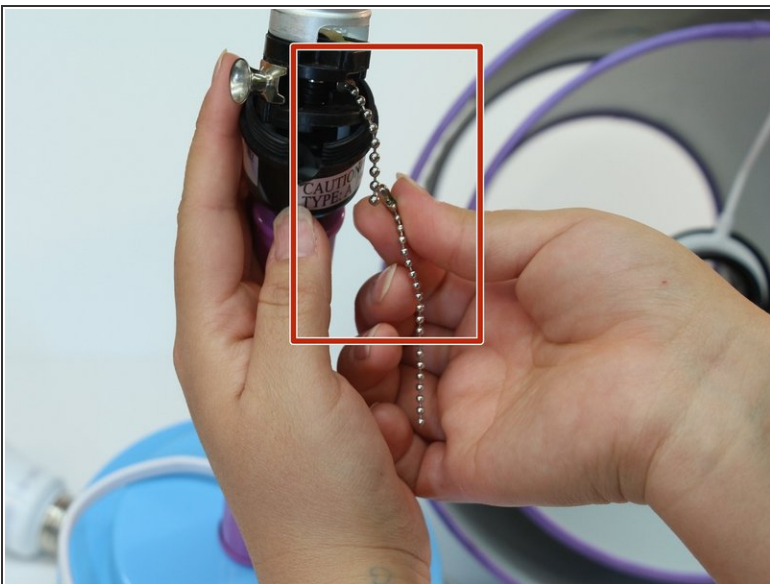


## Step 5



- Attach the chain connector to the extra chain.

## Step 6



- Connect the chain with the chain connector to the broken chain on the lamp base.

## Step 7



- Tilting the lamp in one hand, use your other hand to guide the chain into the hole that leads from inside of the socket to outside of the lamp.
- The chain will go down through this hole.

## Step 8



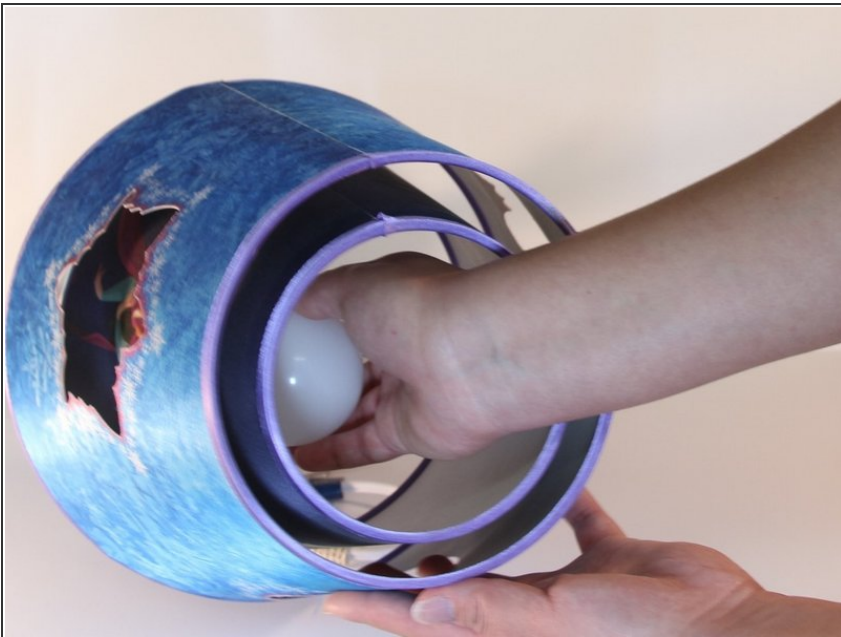
- Gently push the socket back into place.

## Step 9



- Screw the lamp shade back onto the base of the lamp by turning it clockwise.

## Step 10



- Replace the light bulb into the lamp socket.



## Step 11



- Plug your lamp into an outlet and turn it on!

**i** You will pull down on the chain to do this.

## Step 12



- Congratulations! You have fixed your lamp.



Congratulations on fixing your lamp!