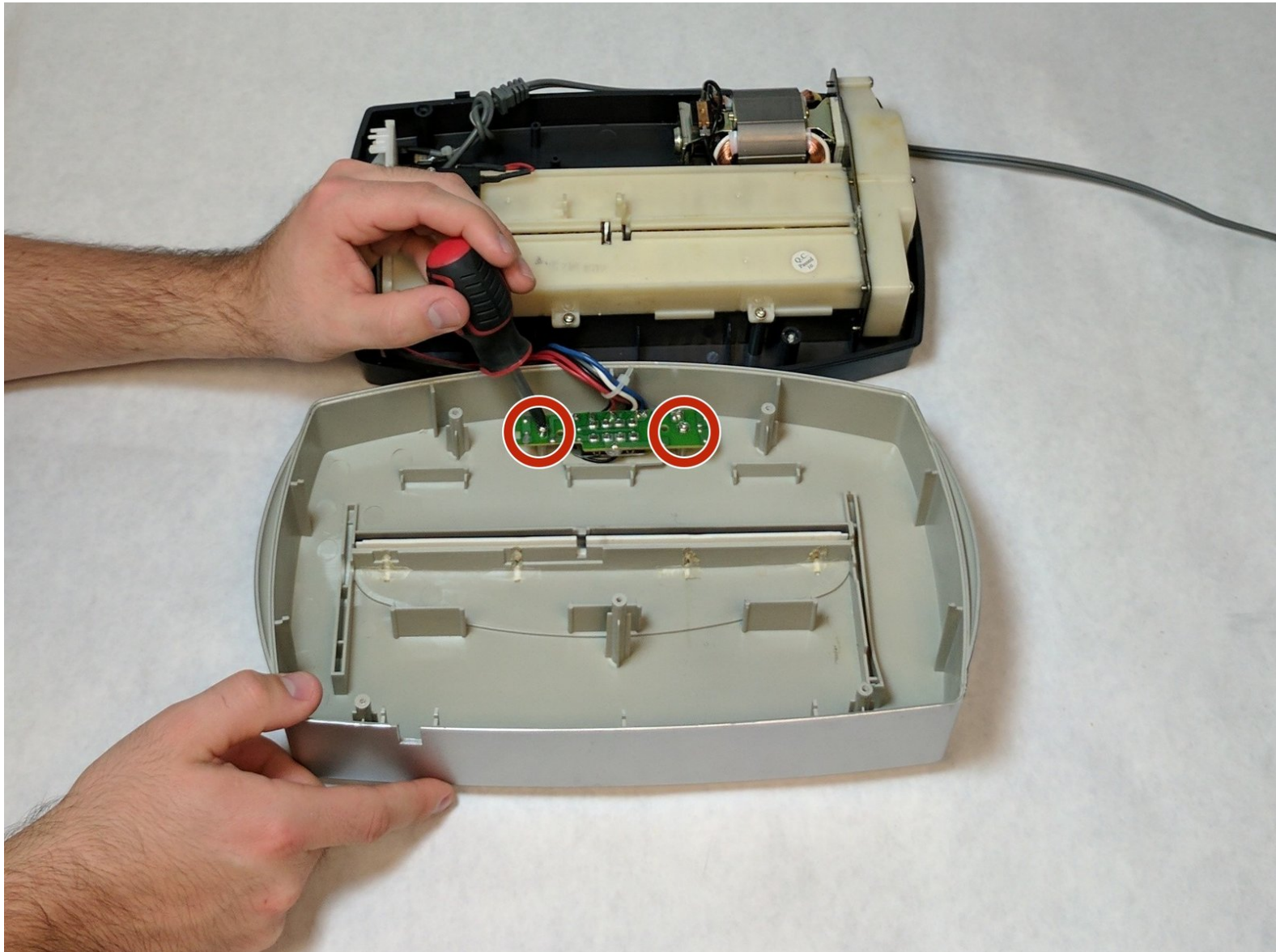




Fellowes T7CM On, Off, Reverse Switch Replacement

Fellowes T7CM On, Off, Reverse Switch Replacement

Written By: Michael Aldrich



INTRODUCTION

The Fellowes T7CM Paper shredder has a three way switch. This switch has three modes; on, off, or reverse. This guide explains how to remove and replace the switch.



TOOLS:

- [Phillips #000 Screwdriver](#) (1)
- [T6 Torx Screwdriver](#) (1)



PARTS:

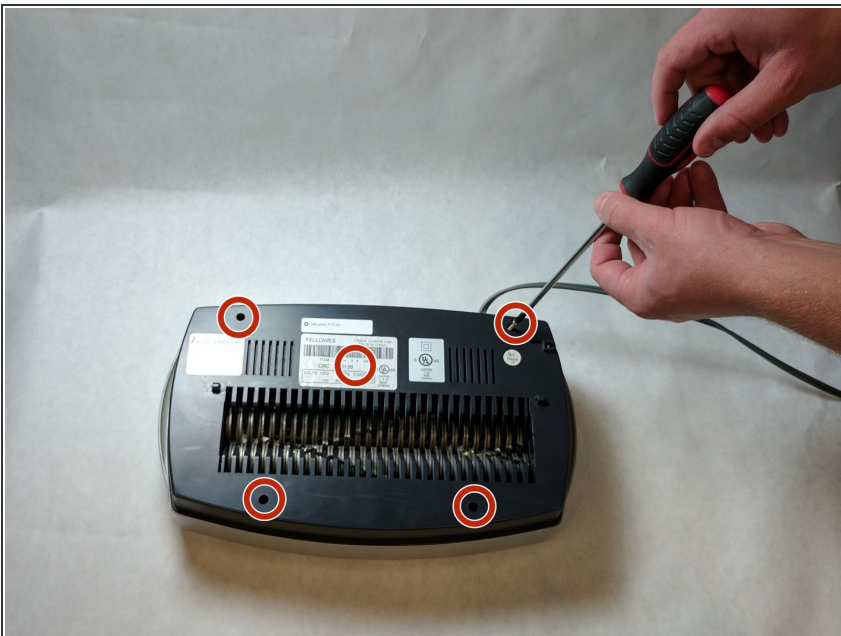
- [three way Switch](#) (1)

Step 1 — Fellowes T7CM Casing and Trigger Replacement



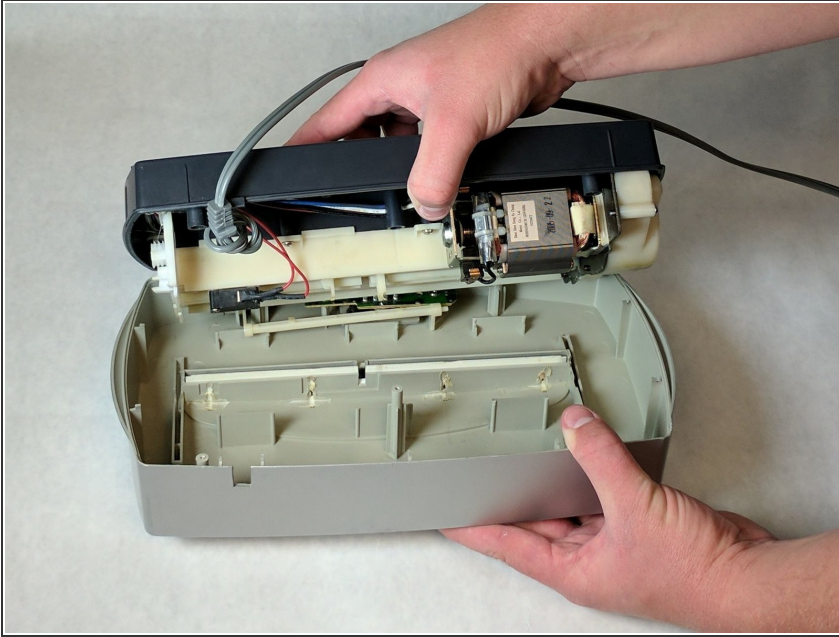
- Check to make sure the shredder is not plugged in to any electrical outlet.
- Remove the shredder from the catch basket and place the silver side down on a flat surface.
- Place the catch basket aside as you will not be needing it for the rest of the disassembly.

Step 2



- Flip the shredder silver side down and place on a flat even surface.
- Remove the manufacturer's label in order to gain access to the hidden screw hole.
- Locate all five of the case screws and remove them with a Phillips-Head screwdriver. The screws are located within the five marked circles in the photo. The size of the screws are 18 mm in length and head diameter of 5 mm.

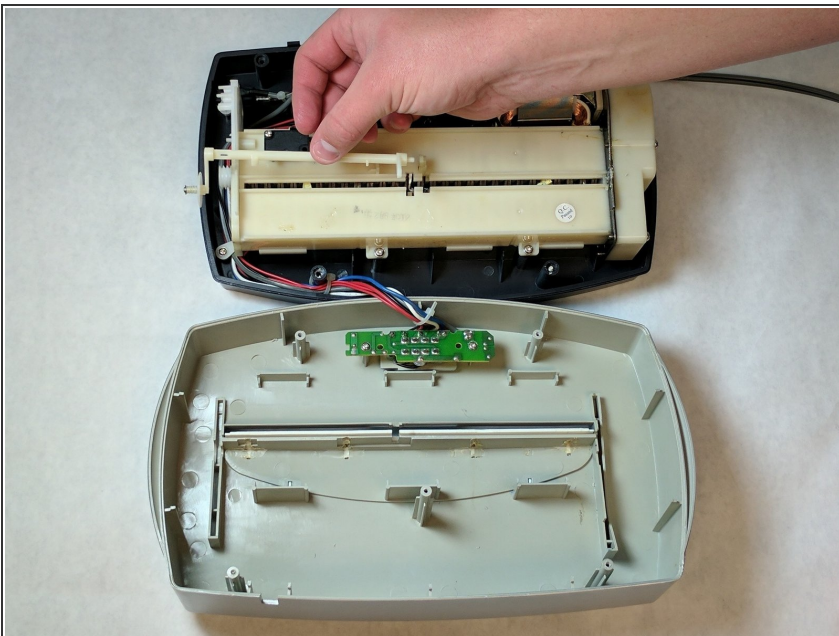
Step 3



- Once all of the screws are removed, slowly pull apart the casing.
- If the casing is not separating, gently wiggle the top part of the casing from the bottom part of the casing.

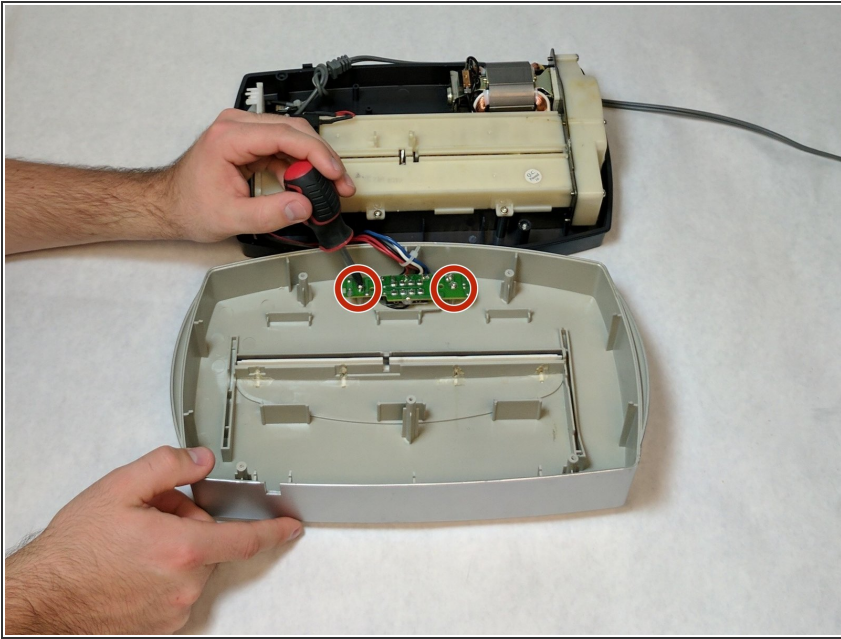
⚠ Use Caution during this procedure to prevent from damaging any of the internal parts.

Step 4



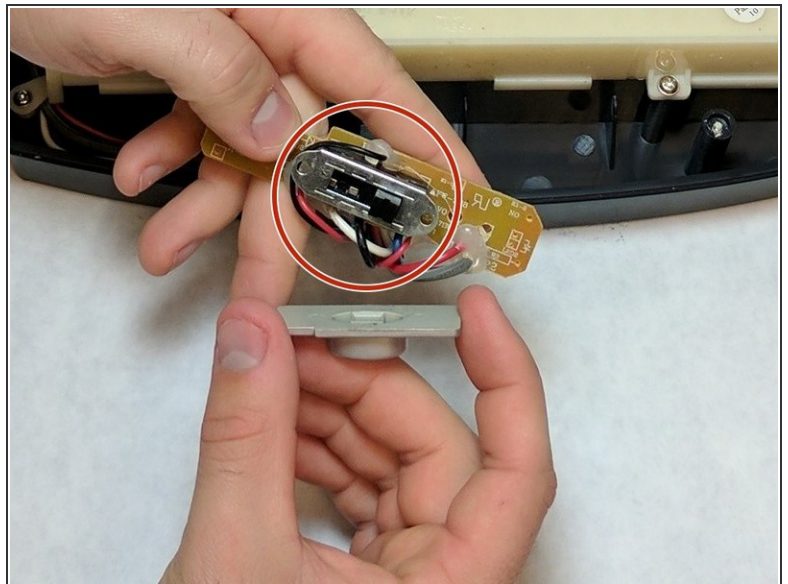
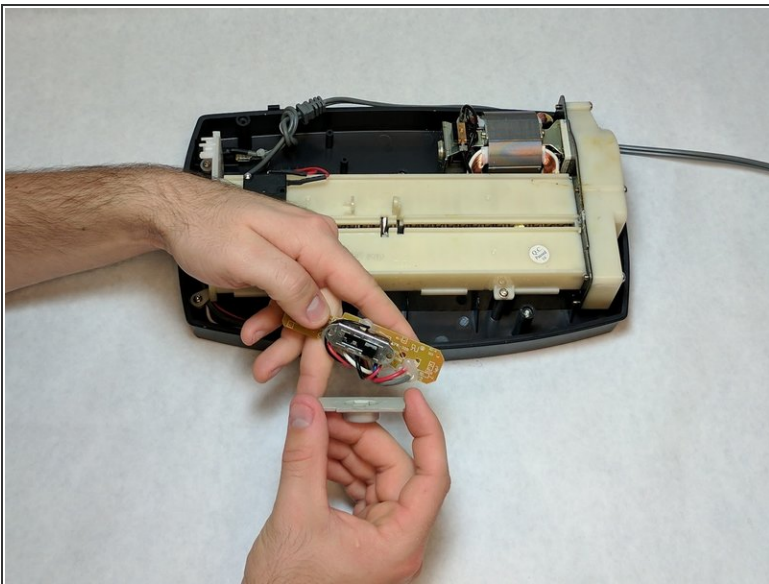
- Open the casing as shown to prevent tangling or damaging the wires.
- Take note to how the trigger assembly is attached before removal.
- The trigger assembly is one part and should come off all together with little to no force applied.
- Remove the trigger assembly.

Step 5 — On, Off, Reverse Switch



- Unscrew both of the screws from the circuit board of the switch . Lift the circuit board away from the device. The screw length is 10 mm and the head diameter is 6 mm.

Step 6



- Remove the plastic switch case.
- After the plastic case is removed, the switch can be replaced.
- During the switch replacement, be careful of the springs that are held in side. They can potentially come loose and get lost.

This document was generated on 2019-09-17 10:28:26 AM (MST).

To reassemble your device, follow these instructions in reverse order.