



Fellowes T7CM Shaft Replacement

This guide shows the removal of the shafts in the Fellowes T7CM.

Written By: Michael Aldrich



INTRODUCTION

This guide shows the removal of the shafts in the Fellowes T7CM.



TOOLS:

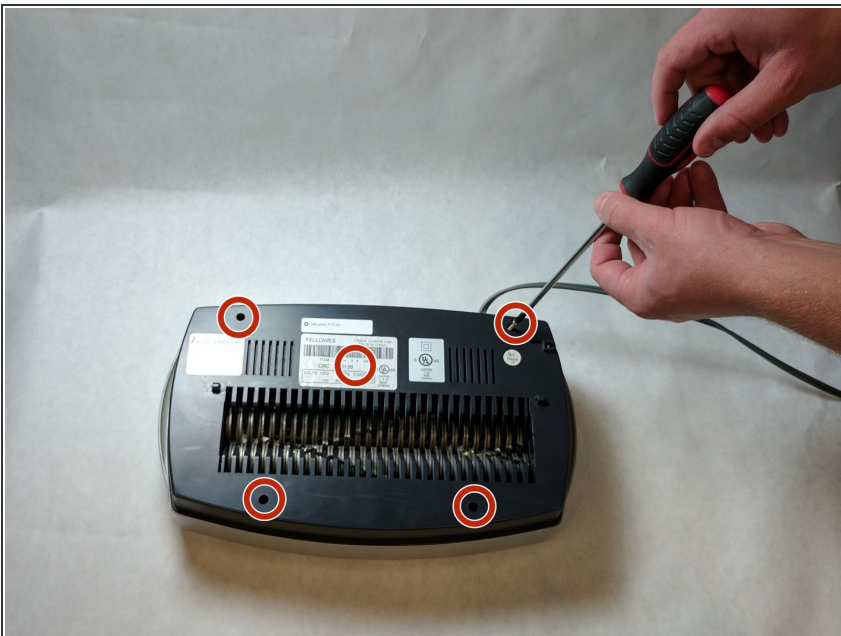
- [Phillips #000 Screwdriver](#) (1)
-

Step 1 — Fellowes T7CM Casing and Trigger Replacement



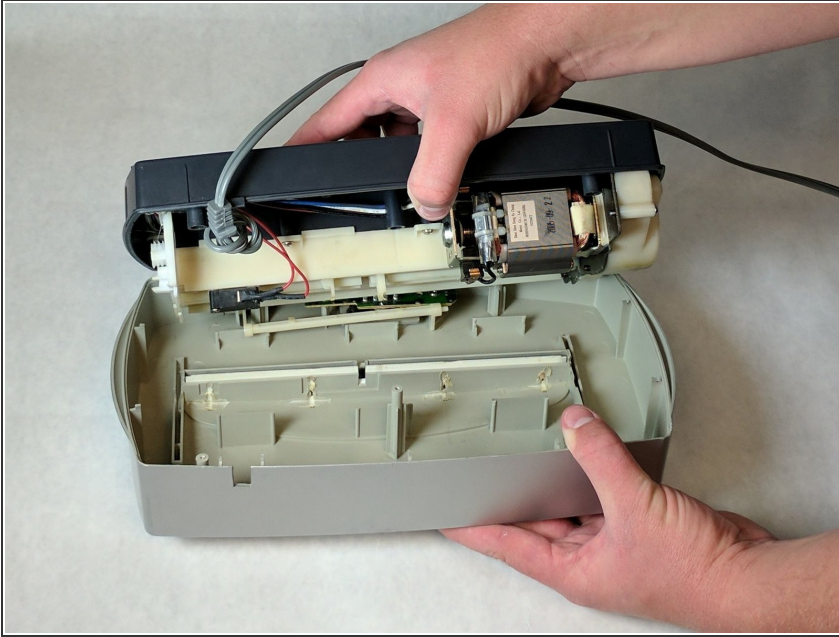
- Check to make sure the shredder is not plugged in to any electrical outlet.
- Remove the shredder from the catch basket and place the silver side down on a flat surface.
- Place the catch basket aside as you will not be needing it for the rest of the disassembly.

Step 2



- Flip the shredder silver side down and place on a flat even surface.
- Remove the manufacturer's label in order to gain access to the hidden screw hole.
- Locate all five of the case screws and remove them with a Phillips-Head screwdriver. The screws are located within the five marked circles in the photo. The size of the screws are 18 mm in length and head diameter of 5 mm.

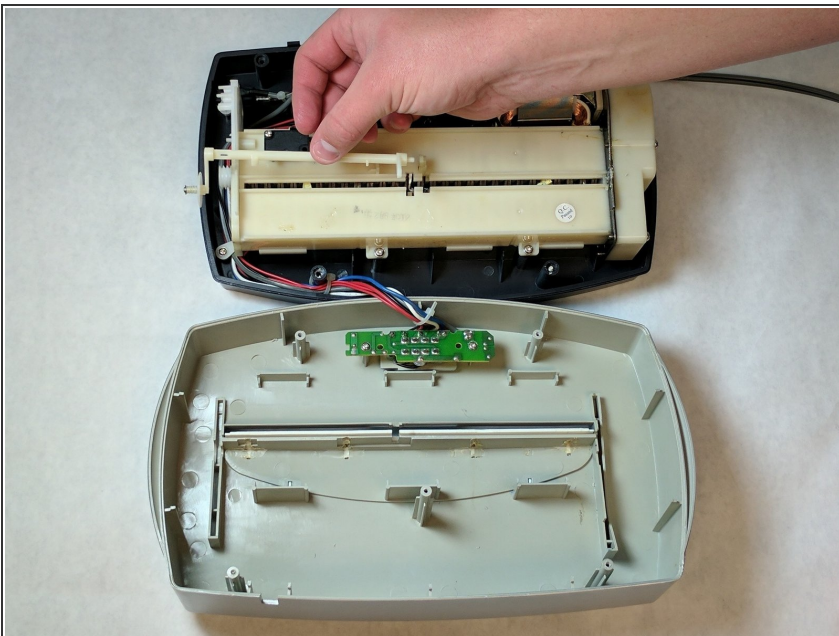
Step 3



- Once all of the screws are removed, slowly pull apart the casing.
- If the casing is not separating, gently wiggle the top part of the casing from the bottom part of the casing.

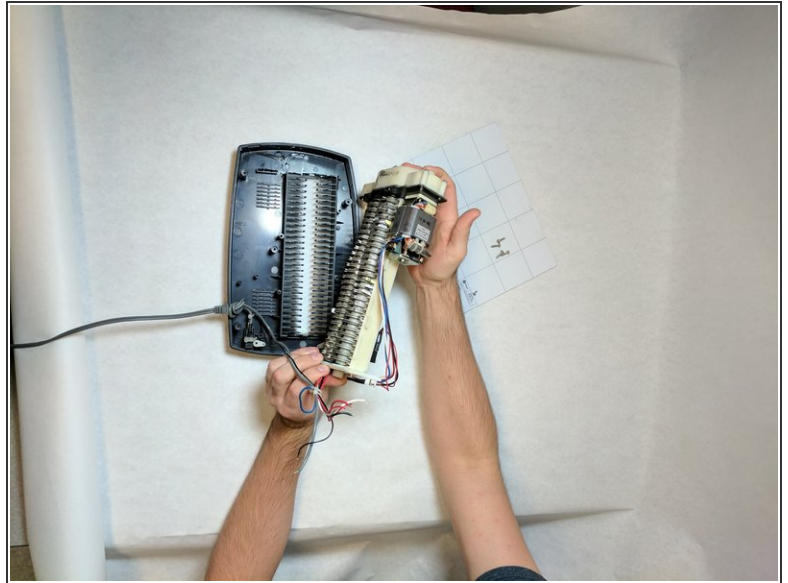
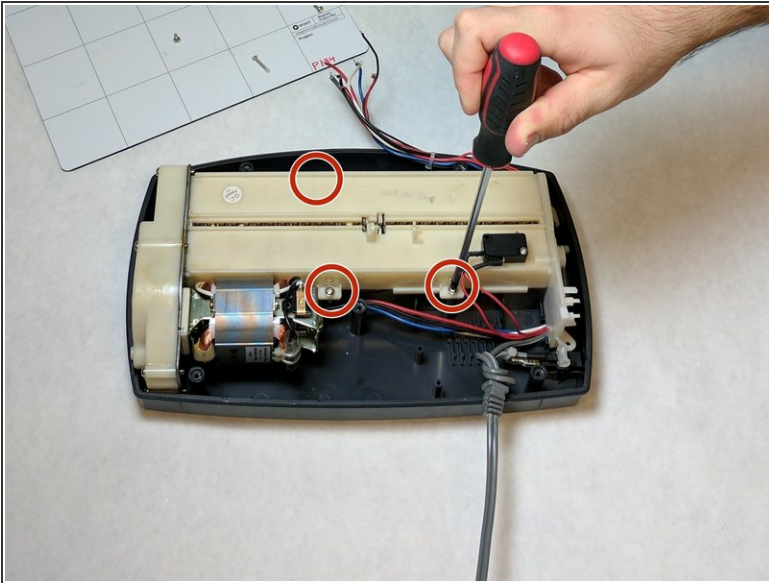
⚠ Use Caution during this procedure to prevent from damaging any of the internal parts.

Step 4



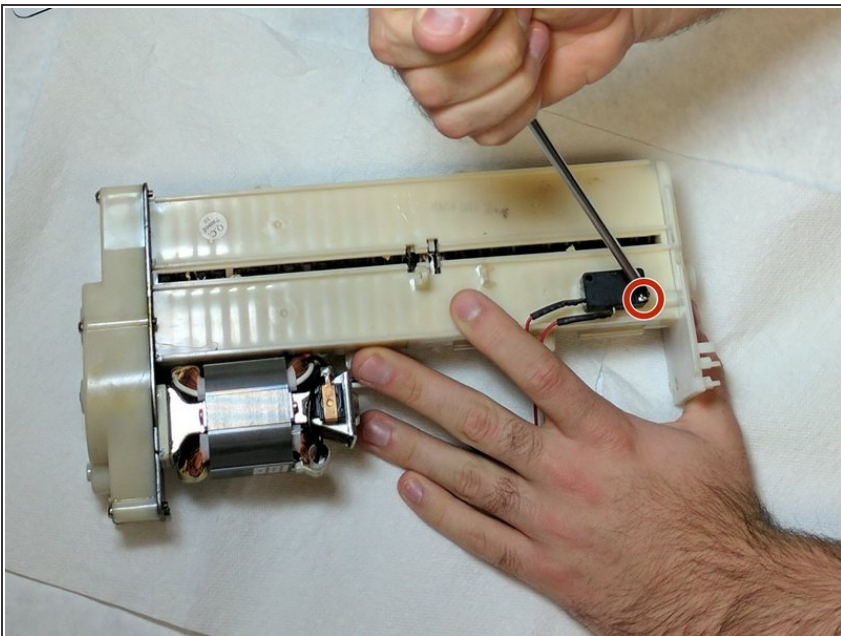
- Open the casing as shown to prevent tangling or damaging the wires.
- Take note to how the trigger assembly is attached before removal.
- The trigger assembly is one part and should come off all together with little to no force applied.
- Remove the trigger assembly.

Step 5 — Gear and Shaft



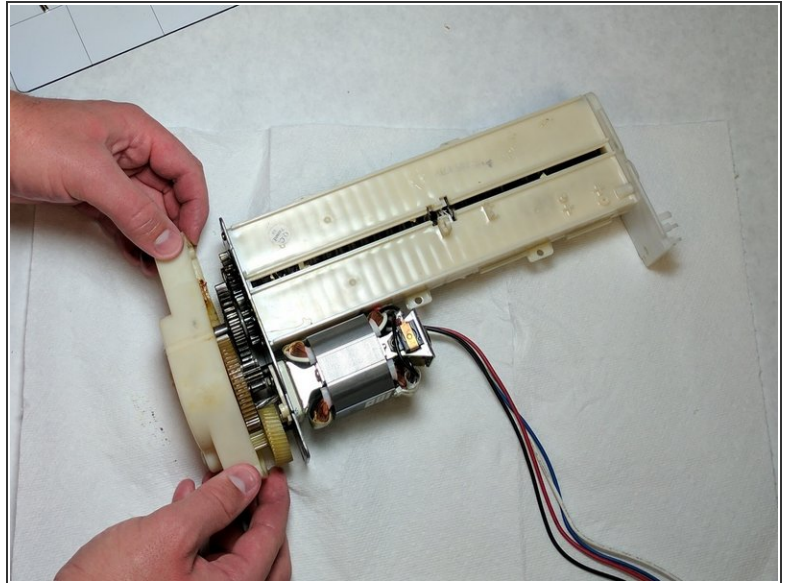
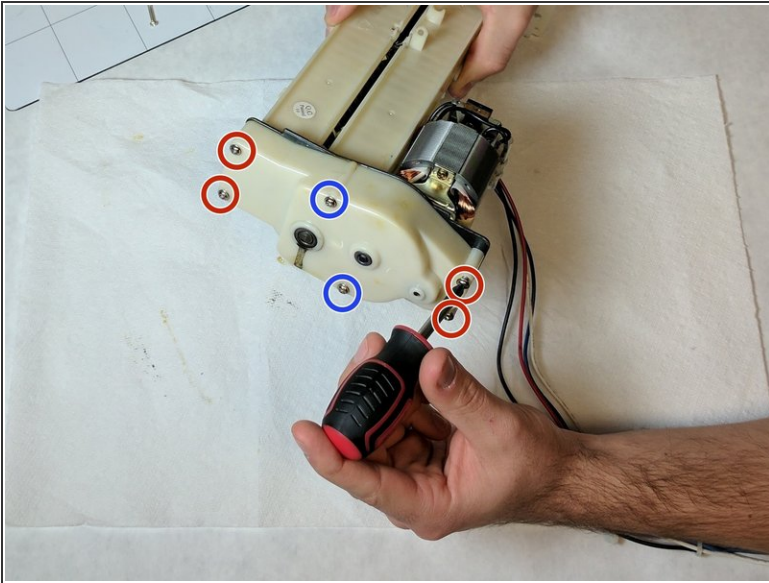
- Remove the three screws holding the internal case to the external case. The screw length is 18 mm and the head diameter is 5 mm.
- Remove the internal case.

Step 6



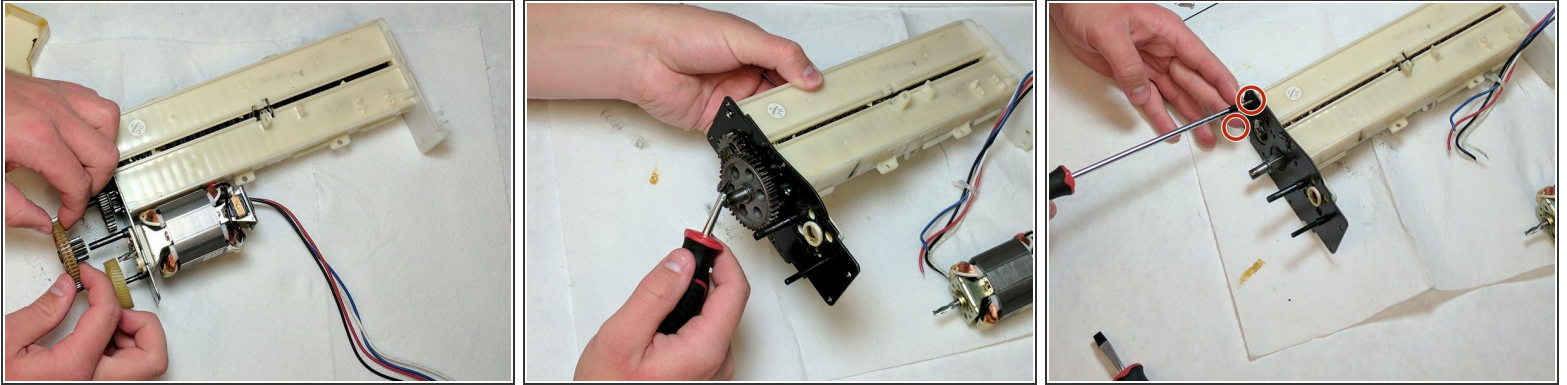
- Remove the feeding sensor by unscrewing the single screw holding it. The screw length is 10 mm and the head diameter is 6 mm.
- This step may be unnecessary, but it will prevent the sensor from being damaged.

Step 7



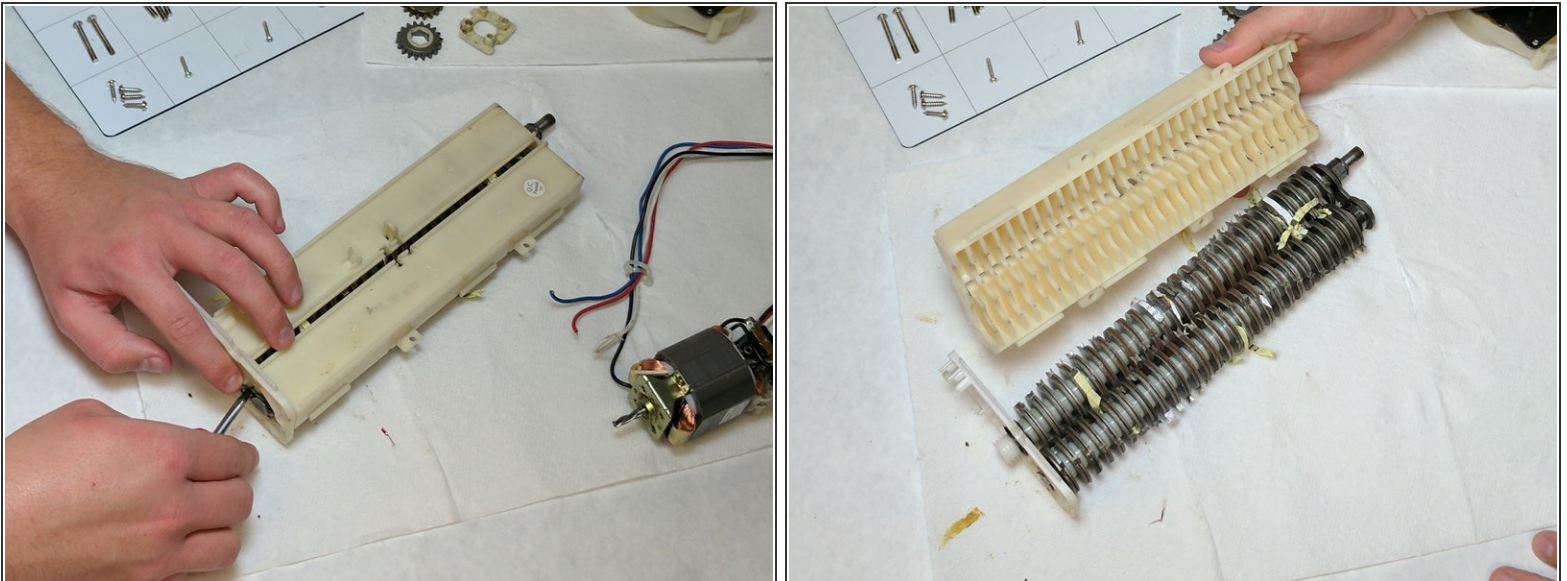
- Remove the six screws on the gearbox.
- Remove the gearbox cover to expose the gears.
- The screw length is 34 mm and the head diameter is 7 mm.
- The screw length is 26 mm and the head diameter is 7 mm.

Step 8



- Remove the gears.
- The larger gear located in the middle may require a screwdriver to pry off.
- Remove the gear holder by unscrewing two screws that are holding it in place. The screw length is 14 mm and the head diameter is 5 mm.

Step 9



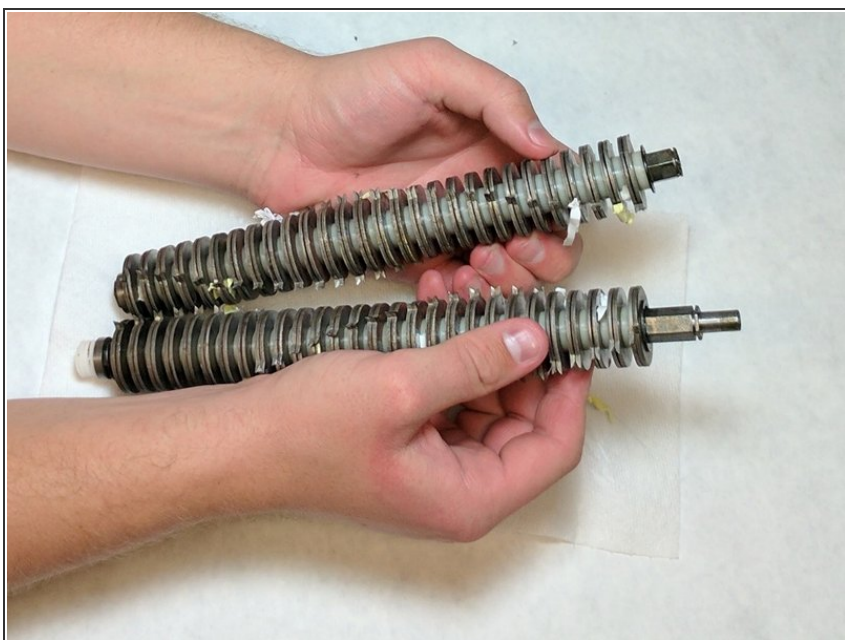
- Remove the pin in order to pull the casing off of the shafts.
- Remove the casing in order to expose shafts.

Step 10 — Shaft



- Remove the metal attachment that holds the two shafts together.

Step 11



- The shafts can now be pulled apart and any obstructions located between or on each of the shafts can be removed.

To reassemble your device, follow these instructions in reverse order.