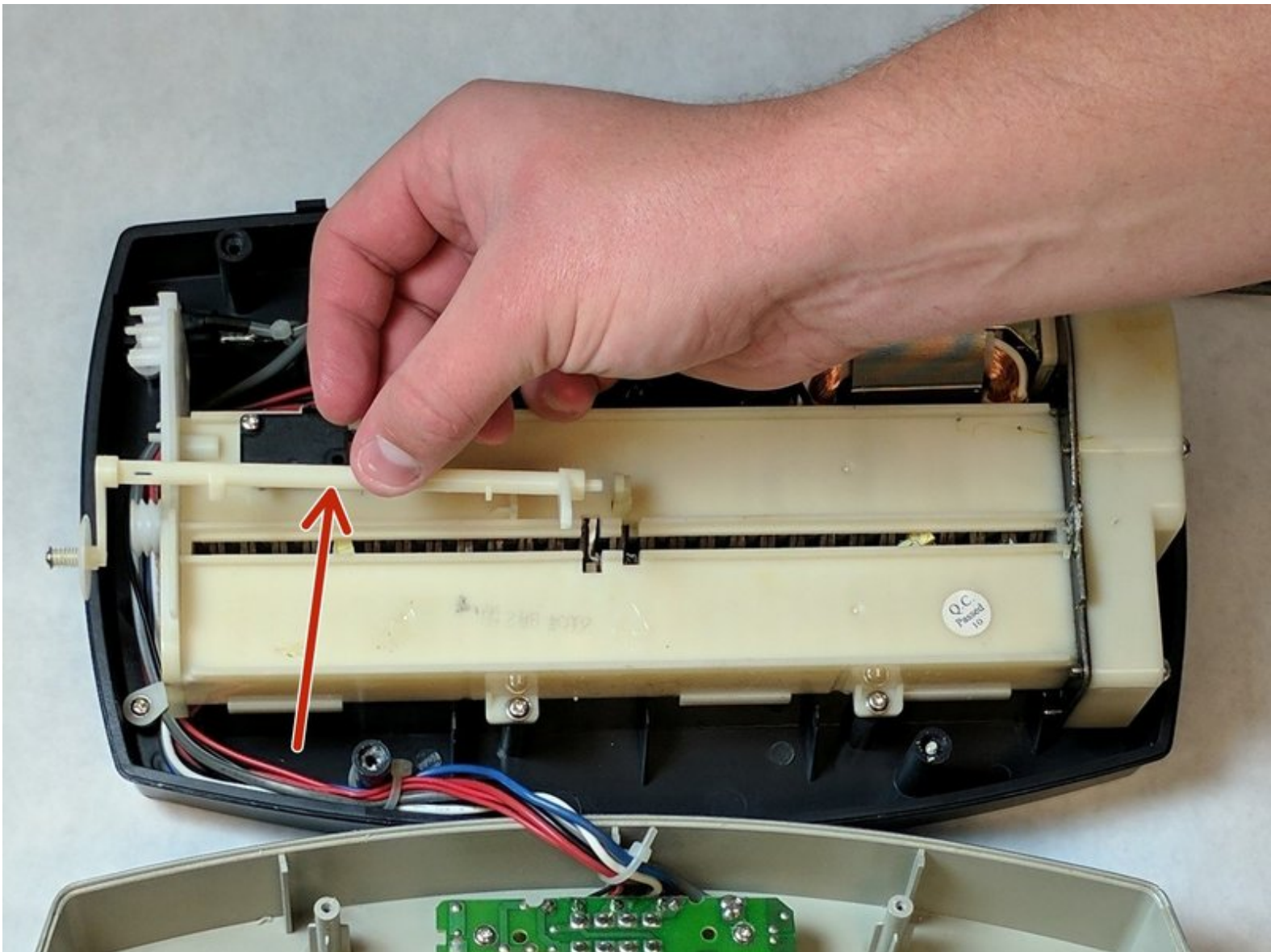




# Fellowes T7CM Trigger Assembly Replacement

This guide shows how to replace the trigger assembly in the Fellowes T7CM.

Written By: Michael Aldrich



---

## INTRODUCTION

This guide shows how to replace the trigger assembly in the Fellowes T7CM.



### TOOLS:

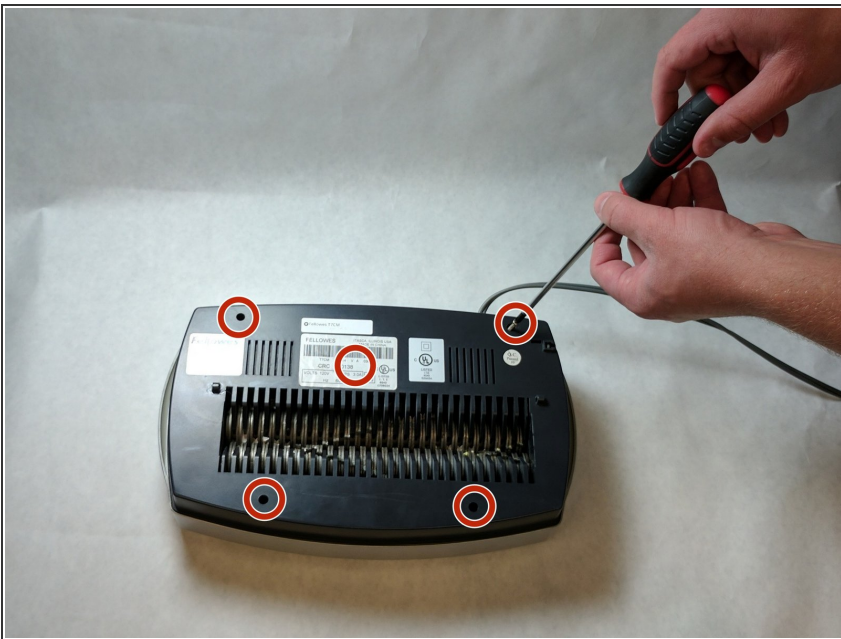
- [Phillips #000 Screwdriver](#) (1)
-

## Step 1 — Fellowes T7CM Casing and Trigger Replacement



- Check to make sure the shredder is not plugged in to any electrical outlet.
- Remove the shredder from the catch basket and place the silver side down on a flat surface.
- Place the catch basket aside as you will not be needing it for the rest of the disassembly.

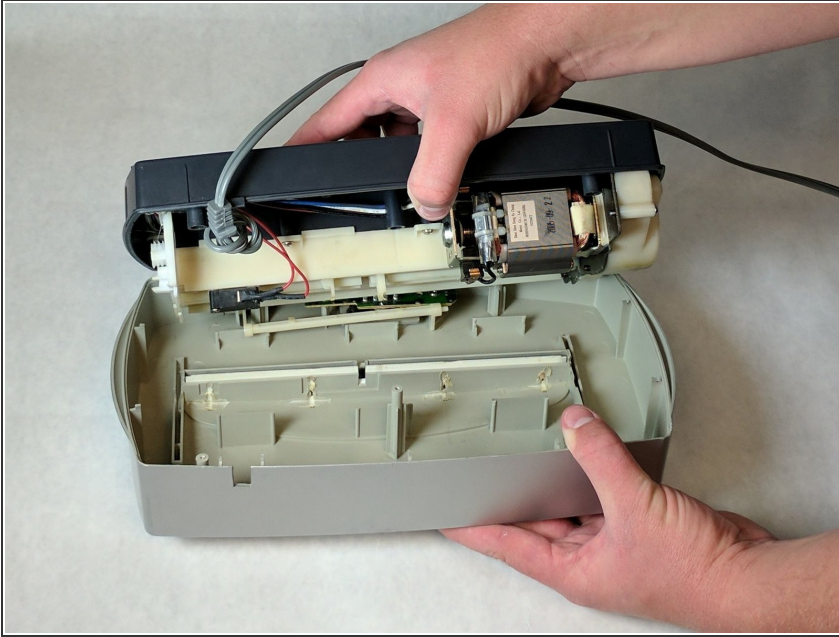
## Step 2




- Flip the shredder silver side down and place on a flat even surface.
- Remove the manufacturer's label in order to gain access to the hidden screw hole.
- Locate all five of the case screws and remove them with a Phillips-Head screwdriver. The screws are located within the five marked circles in the photo. The size of the screws are 18 mm in length and head diameter of 5 mm.



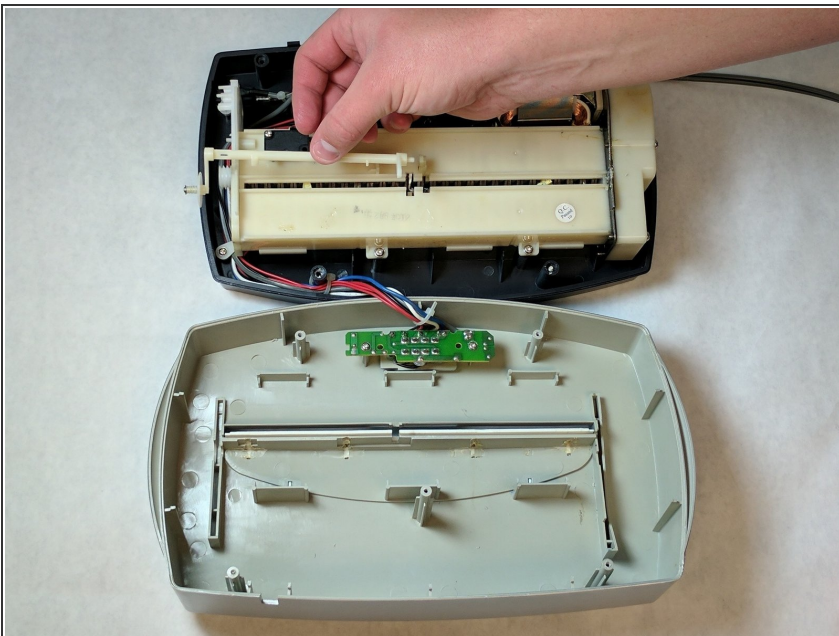
### Step 3



- Once all of the screws are removed, slowly pull apart the casing.
- If the casing is not separating, gently wiggle the top part of the casing from the bottom part of the casing.

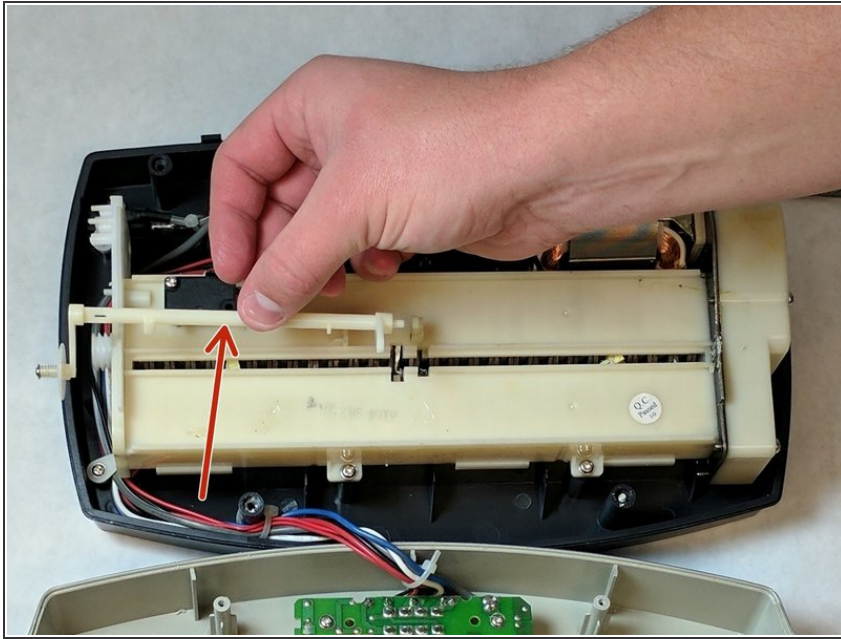
 **Use Caution** during this procedure to prevent from damaging any of the internal parts.

### Step 4



- Open the casing as shown to prevent tangling or damaging the wires.
- Take note to how the trigger assembly is attached before removal.
- The trigger assembly is one part and should come off all together with little to no force applied.
- Remove the trigger assembly.

## Step 5 — Trigger Assembly



- Remove the trigger assembly by gently twisting and pushing it.
- The assembly should come off easily with little effort.

To reassemble your device, follow these instructions in reverse order.