



Fender Frontman 15r Transformer Replacement

This guide shows how to remove the old transformer and install the new one.

Written By: Stephen Figueira



INTRODUCTION

The transformer takes an input voltage and outputs a different voltage. Without the transformer, the device would receive improper voltages, causing the device to malfunction.

TOOLS:

- [Wire Stripper](#) (1)
 - [9/32" Crescent Wrench](#) (1)
 - [Phillips #0 Screwdriver](#) (1)
 - [Phillips #1 Screwdriver](#) (1)
 - [iFixit Opening Tools](#) (1)
 - [Spudger](#) (1)
-

Step 1 — Back panel



- ⚠ Be sure to unplug the device before proceeding.
- Use a Phillips #0 screwdriver to remove the four 21.7mm screws holding the back panel to the frame.

Step 2



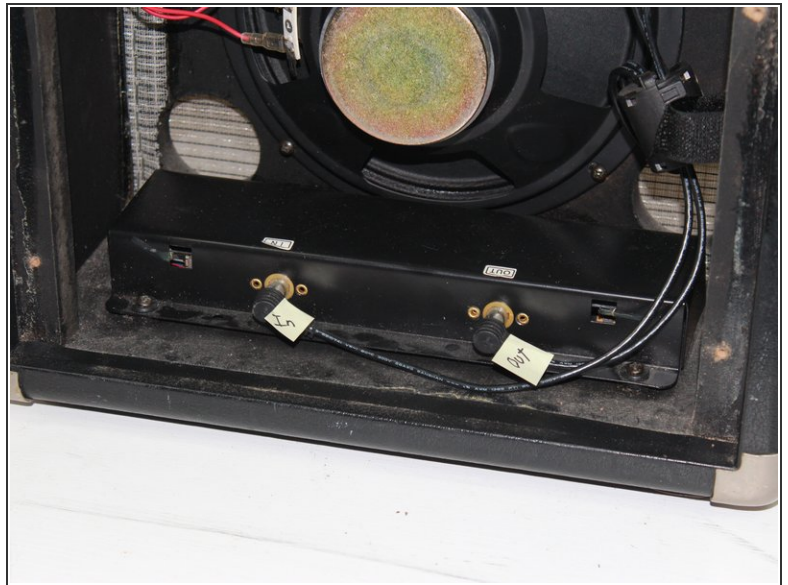
- Once the screws are out, use a plastic opening tool or spudger to pry the top of the back panel open. There may be some resistance, but it will eventually pry loose.

Step 3



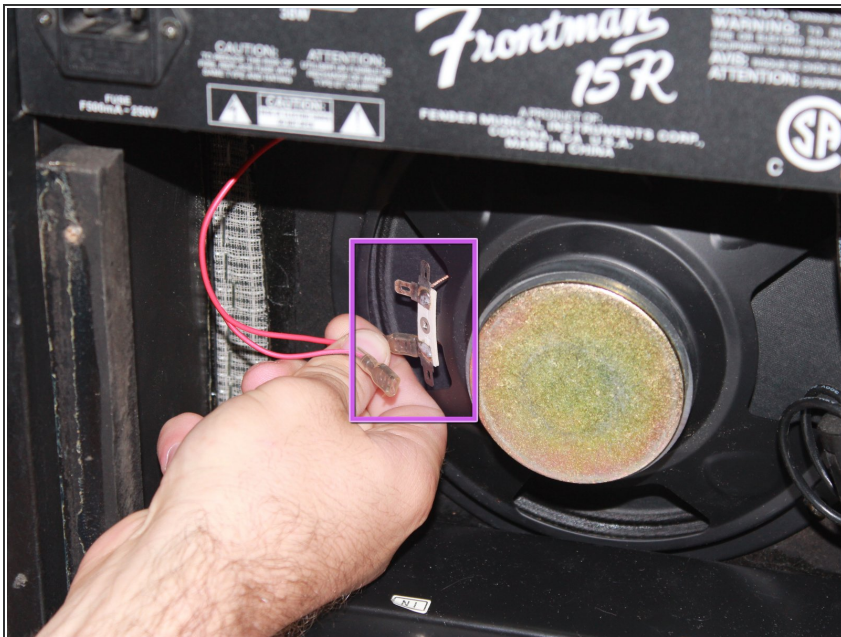
- Once the top is separated, use your hand to remove the back panel from the unit.

Step 4 — Mounting Bracket



- There will be two black wires connecting the top mounting bracket to the reverb box at the bottom of the unit. Label the wires to prevent crossing upon re-installation, then unplug the wires from the reverb box.

Step 5



- Label and unplug the two red wires connecting the mounting bracket to the speaker by pulling them off the nodes.

Step 6



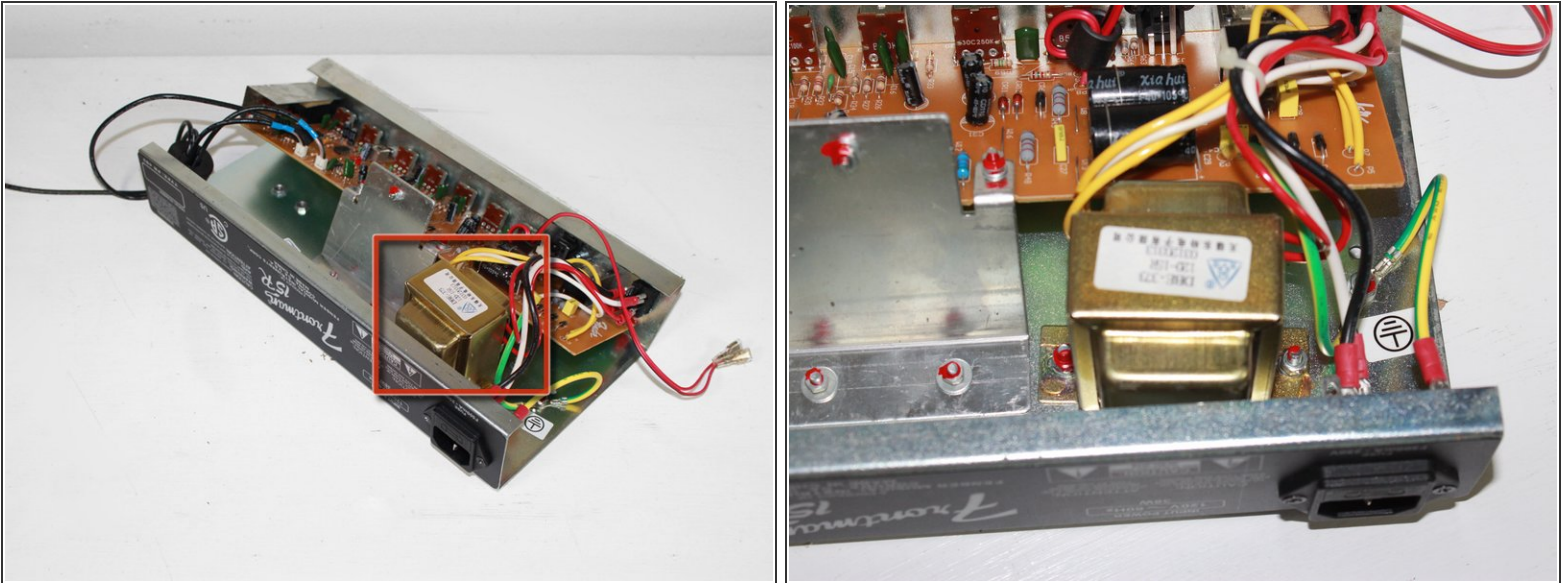
- Use a Phillips #1 screwdriver to unscrew the four 36.4 mm screws holding the mounting bracket to the top of the amp.

Step 7



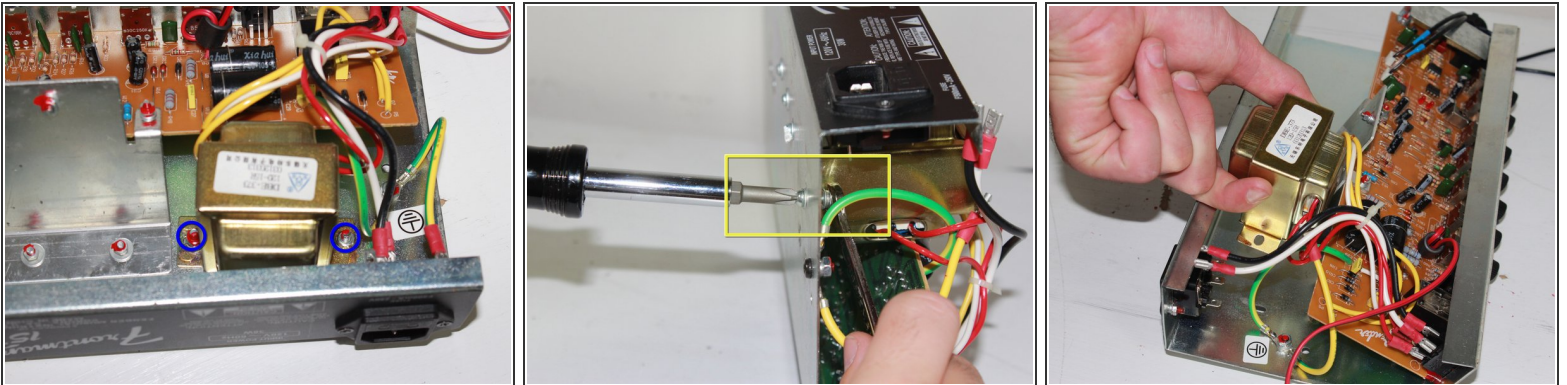
- Pull the mounting bracket free from the frame. It may be wedged in very snug, in which case, use a plastic opening tool/spudger to pry it loose from the front.

Step 8 — Transformer



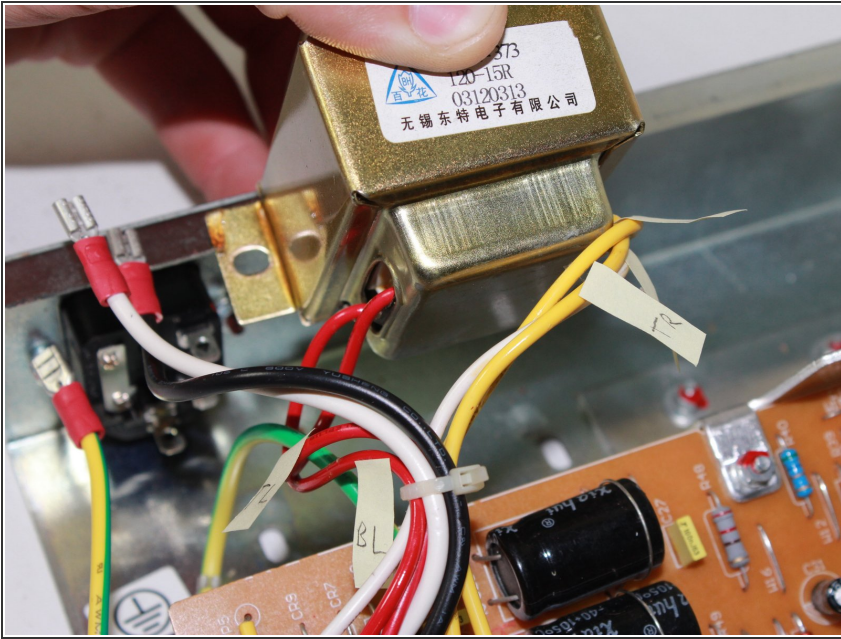
- Locate the transformer on the metal mounting bracket and be sure that it looks the same as the replacement that you plan on installing.

Step 9



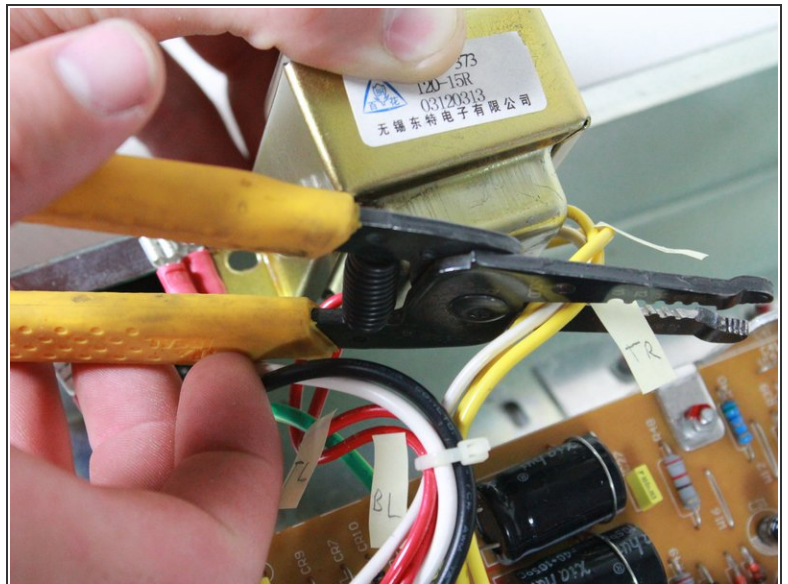
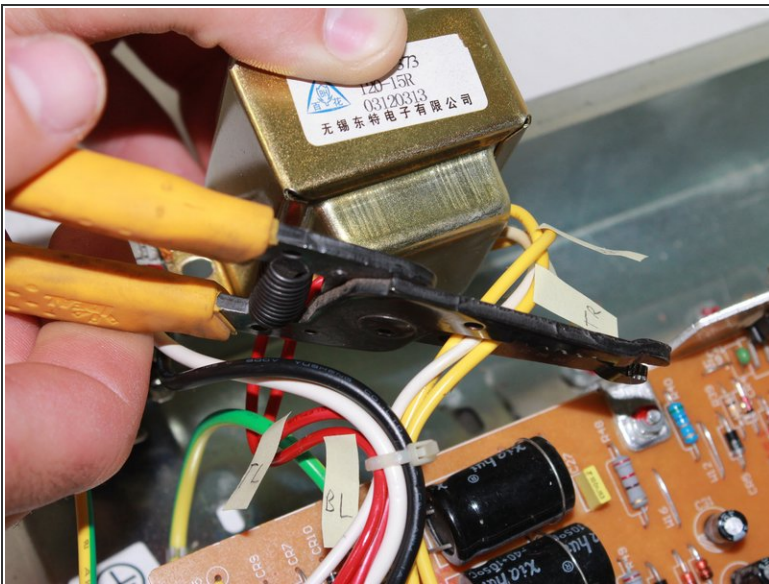
- Using a Philips #1 Screwdriver unscrew the two 14.8 mm screws connecting the transformer to the mounting bracket.
- Hold the nuts in place while unscrewing the bolts using a 9/32" Crescent Wrench (or pliers if you do not have a 9/32" Crescent Wrench).
- ⓘ Although the transformer is released from the mounting bracket, it cannot be fully removed yet because there are still cables holding it to the circuit board that must be cut.

Step 10



- Label, make note of, or memorize the arrangement of all wires going to and from the transformer.

Step 11



- Using wire cutters, cut the wires from the existing transformer leaving only enough wire next to the transformer to see the color of each cut wire. Then remove the transformer.

The new transformer will have wire leads that need to be spliced with the cut wires from the board and power switch. If you are unfamiliar with this process, here are the fundamentals of [how to splice cut wires together](#).