



First Act MA2039 Cleaning Acid Residue

Clean and remove damaged batteries that may have leaked caustic or harmful substances.

Written By: Nicholas Norlin-Pritchard



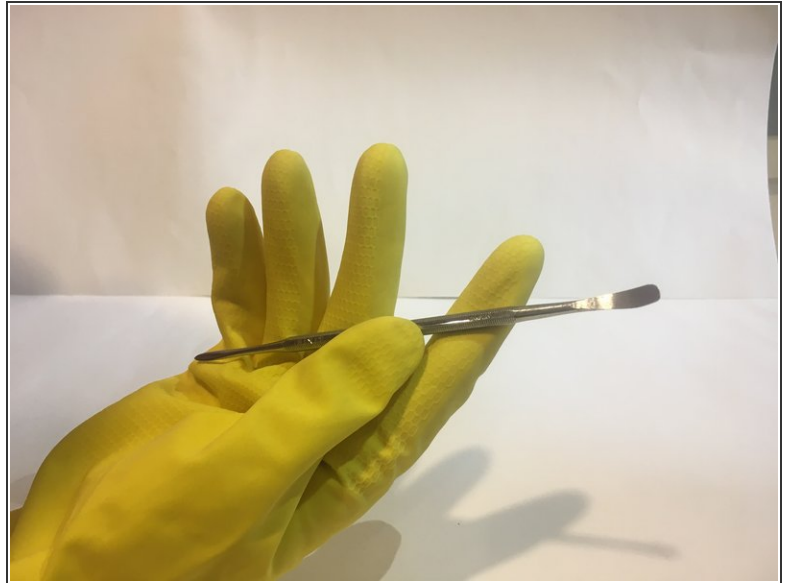
INTRODUCTION

Clean and remove damaged batteries that may have leaked caustic or harmful substances.

TOOLS:

- [Spudger](#) (1)
 - [Phillips #0 Screwdriver](#) (1)
 - [Latex or nitrile gloves](#) (1)
 - [Safety Glasses](#) (1)
 - [Q-Tips](#) (1)
 - [Distilled White Vinegar](#) (1)
-

Step 1 — First Act MA2039 Cleaning Acid Residue






- i** There are several items you will need before starting. You will need: a pair of **cleaning gloves**, **safety glasses**, a **screwdriver**, a **metal prying spudger** (see picture 2), several **Q-tips**, distilled **vinegar**, **2 nine-volt batteries** (for replacing damaged batteries), and one small **plastic bag**.

Step 2



- Before starting, put on the cleaning gloves and safety glasses.

 **WARNING:** battery acid from corroded batteries can cause skin and eye irritation depending on contact.

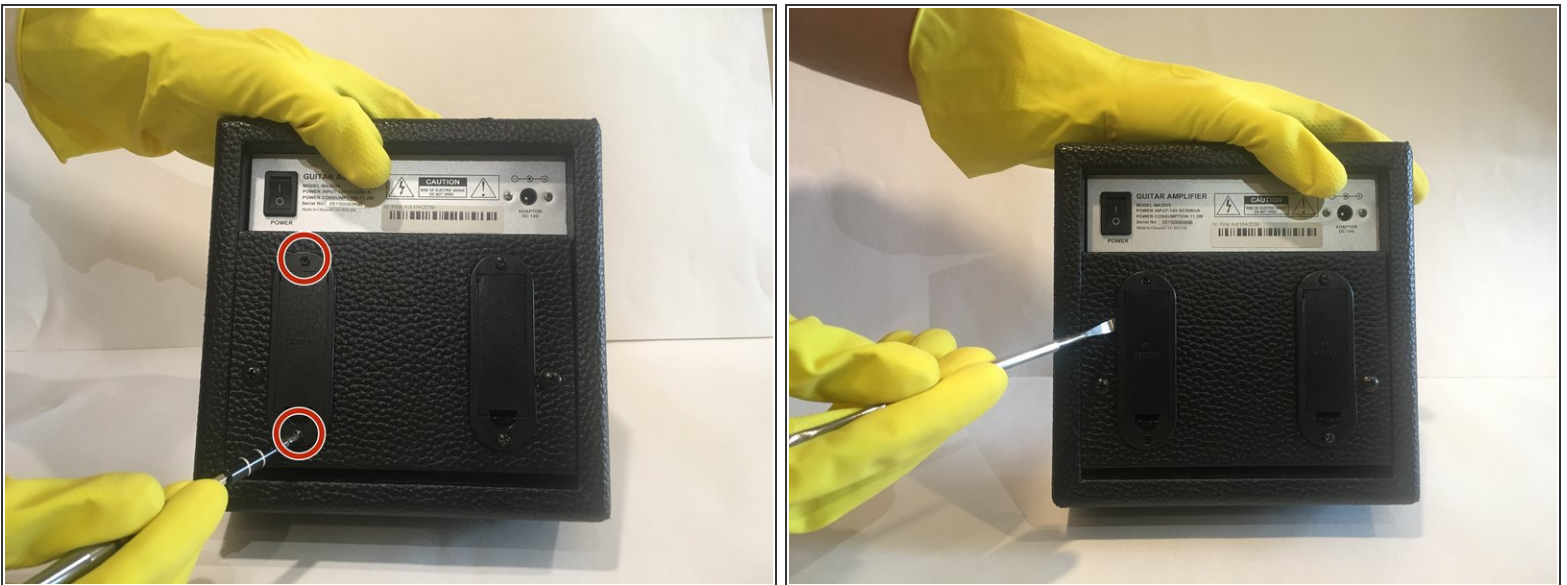
-  If you touch any battery acid wash hands thoroughly with lukewarm water and handsoap.
-  If acid is splashed into your eye run lukewarm water from a faucet onto eye for 30 minutes with eyelids open.

Step 3



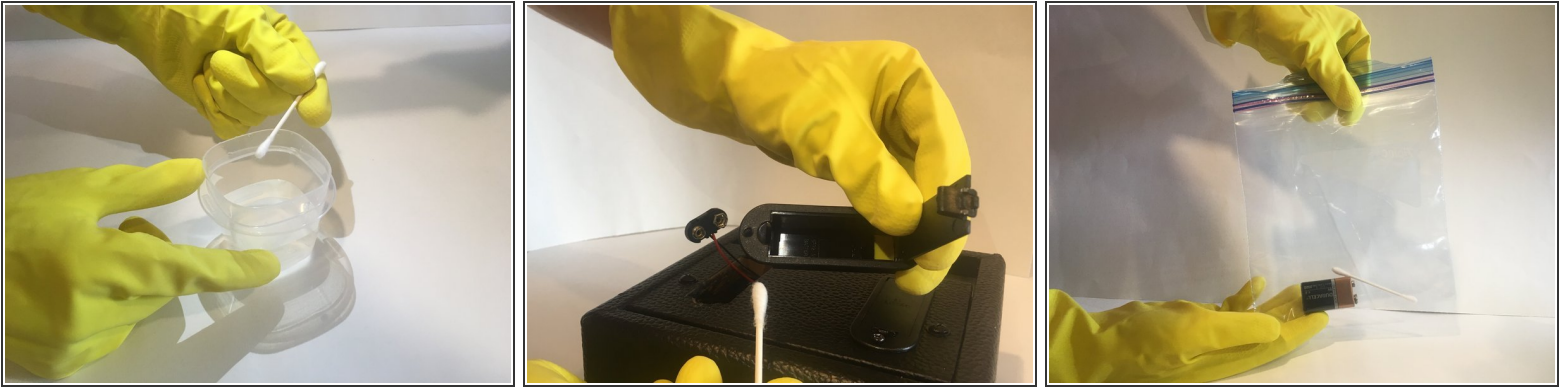
- Place the amplifier face-down and lift the cartridge lid up.
- Remove the corroded battery with the assistance of the Spudger and place the battery in the plastic bag.

Step 4



- Close the lid of the battery cartridge and begin to unscrew the two 13mm screws located at the top and bottom of the battery cartridge with the Phillips #0 Screwdriver.
- Use the Spudger to pry the battery cartridge away from the center console.

Step 5



- Dab one end of the Q-tip into the vinegar solution.
- Rub the inside and outside of the battery cartridge as well as the battery terminal with the Q-tip to remove any acid residue. Use as many Q-tips needed to remove the acid.
- Once finished place the used Q-tip(s) inside the small bag with the battery and dispose of the two properly.
- All done! Return the cartridge back into the center console and screw in the two 13mm screws.