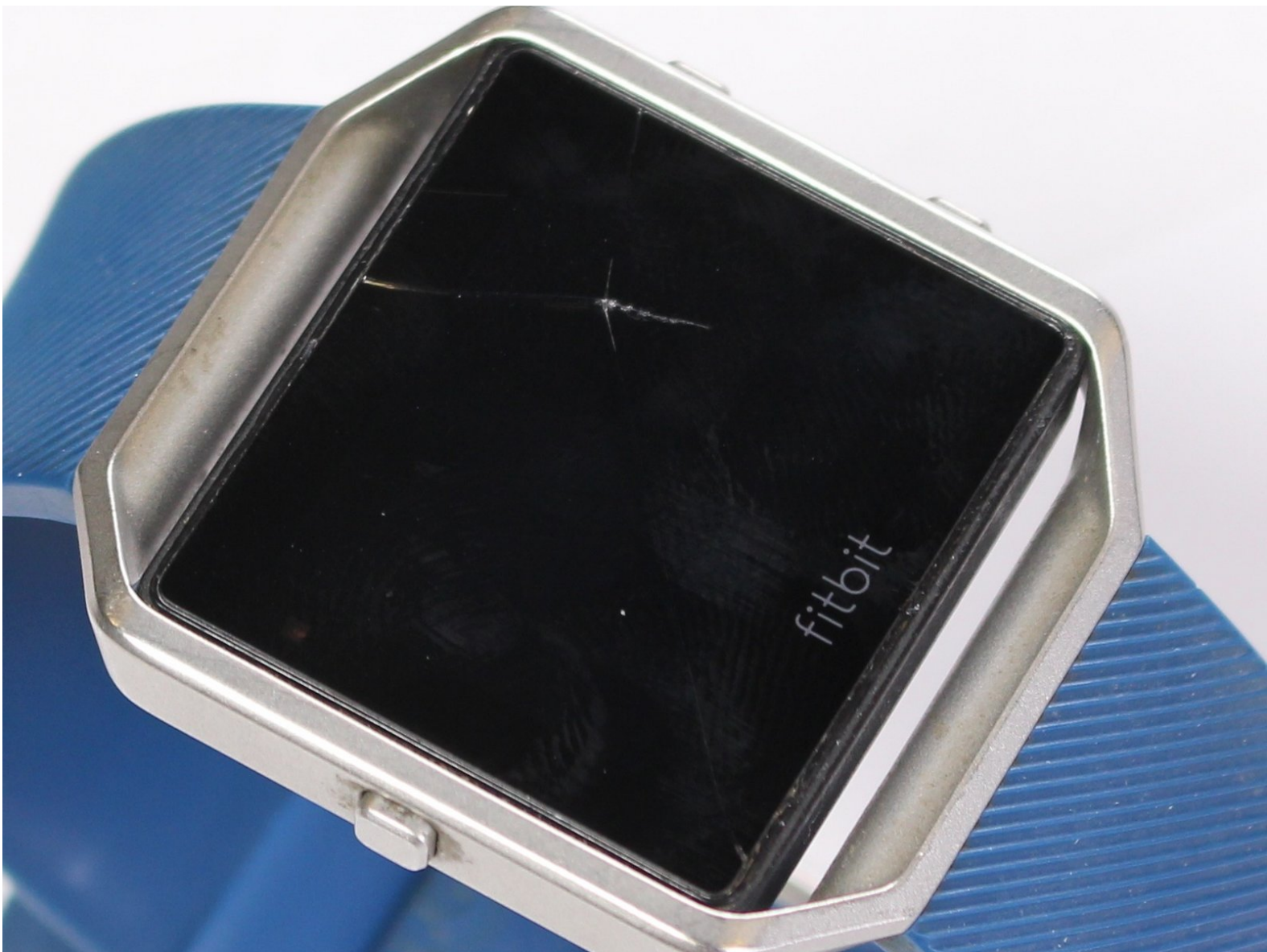




Fitbit Blaze Display Frame Replacement

Have a crack around the metal ring enclosure of your Fitbit Blaze? This guide will provide you with step by step instructions on how to replace it.

Written By: Adrian Borrego



INTRODUCTION

Would like to replace your damaged or worn out metal ring around your device? This guide will show you how to remove and replace the metal ring that holds the LCD screen in place.



TOOLS:

- [Metal Spudger](#) (1)
-

Step 1 — Wristband



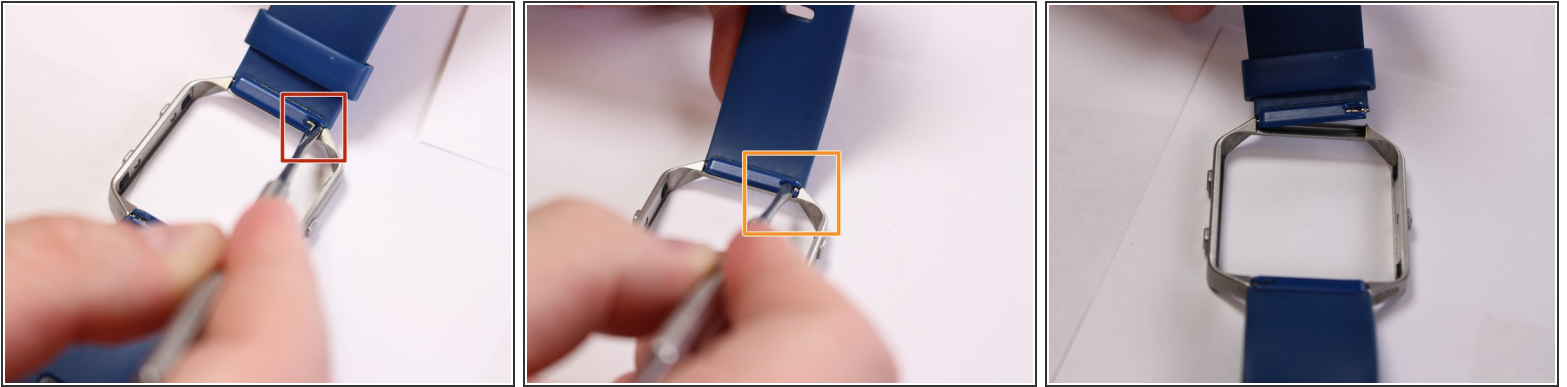
- Locate the front LCD screen on your device.
 - ❗ Fitbit logo should appear in the bottom center of the screen.

Step 2



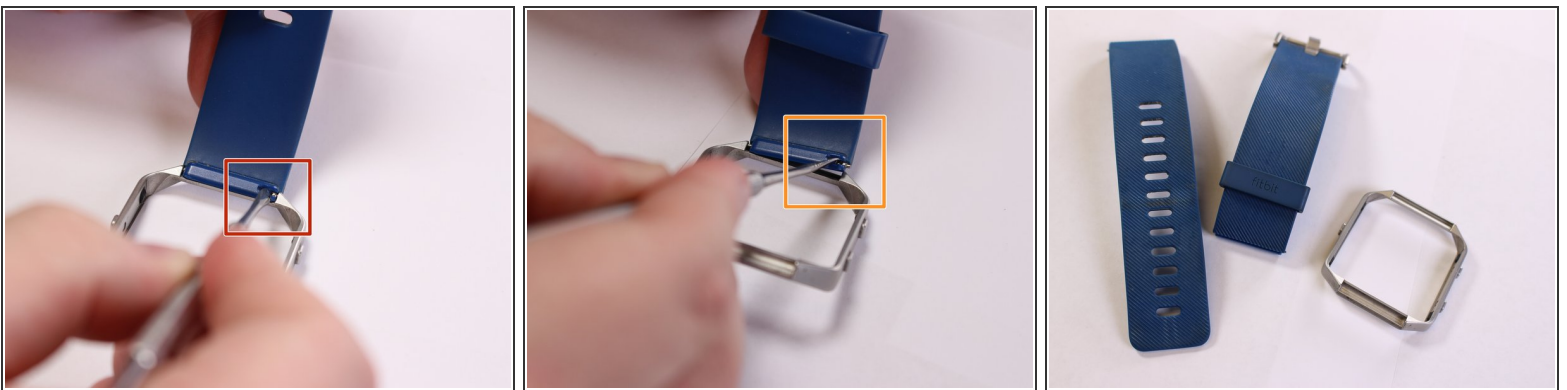
- Push the screen out through the back of the metal ring enclosure.
 - ⚠ Use a small amount of force on screen to prevent damage. Use other hand to catch screen.

Step 3



- Locate the metal pin behind the wristband located on the edge of metal ring.
- Insert the pointed end of the metal spudger into the pin hold and push it into the blue rectangle enclosure.
- ⚠ Use a small amount of force to avoid damaging the pins.
- Remove wristband.

Step 4 — Display Frame



- Locate the pin behind the second wristband located on the edge of metal ring.
- Insert the pointed end of the metal spudger into the pin hold and push it into opposite direction.
- ⚠ Use a small amount of force to avoid damaging the pins.
- Remove wristband.

To reassemble your device, follow these instructions in reverse order.