



Fitbit FB502SBUL Wristband Replacement

Have broken or worn out wristbands on your Fitbit Blaze? This guide will provide you step by step instructions on how to replace your wristbands.

Written By: Adrian Borrego



INTRODUCTION

This guide will show you how to remove and replace your worn out or damaged wristbands.



TOOLS:

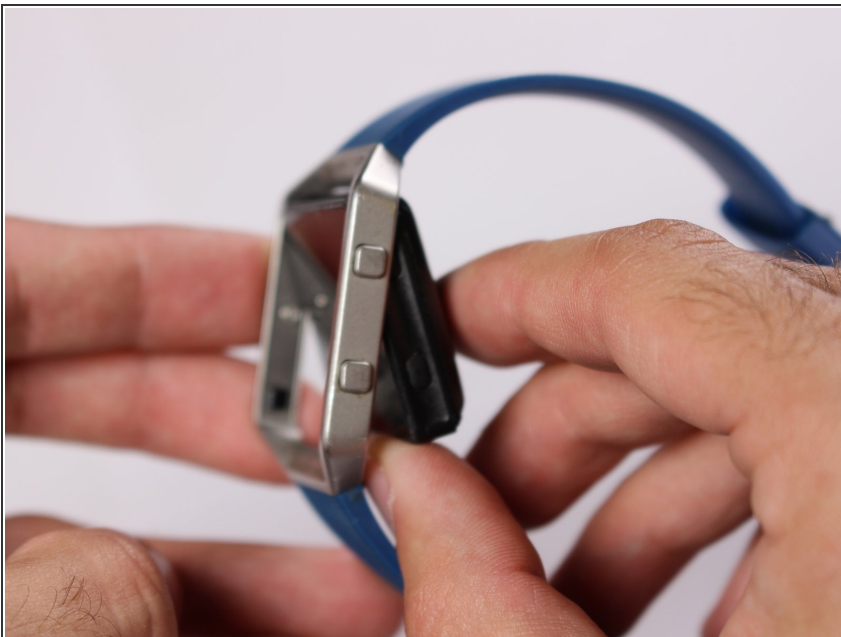
- [Metal Spudger](#) (1)
-

Step 1 — Wristband



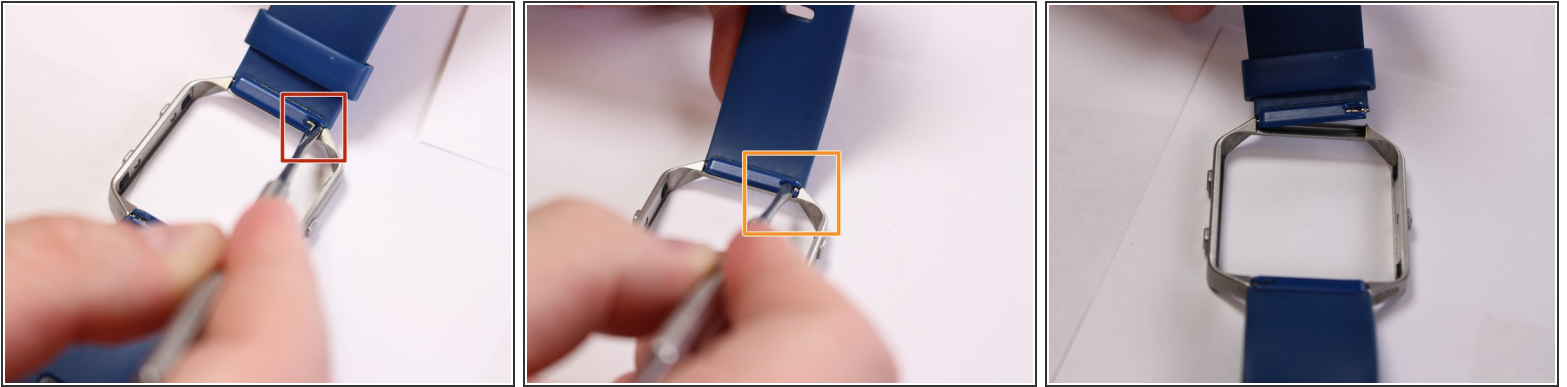
- Locate the front LCD screen on your device.
 - ⓘ Fitbit logo should appear in the bottom center of the screen.

Step 2



- Push the screen out through the back of the metal ring enclosure.
 - ⚠ Use a small amount of force on screen to prevent damage. Use other hand to catch screen.

Step 3



- Locate the metal pin behind the wristband located on the edge of metal ring.
- Insert the pointed end of the metal spudger into the pin hold and push it into the blue rectangle enclosure.
- ⚠ Use a small amount of force to avoid damaging the pins.
- Remove wristband.

To reassemble your device, follow these instructions in reverse order.