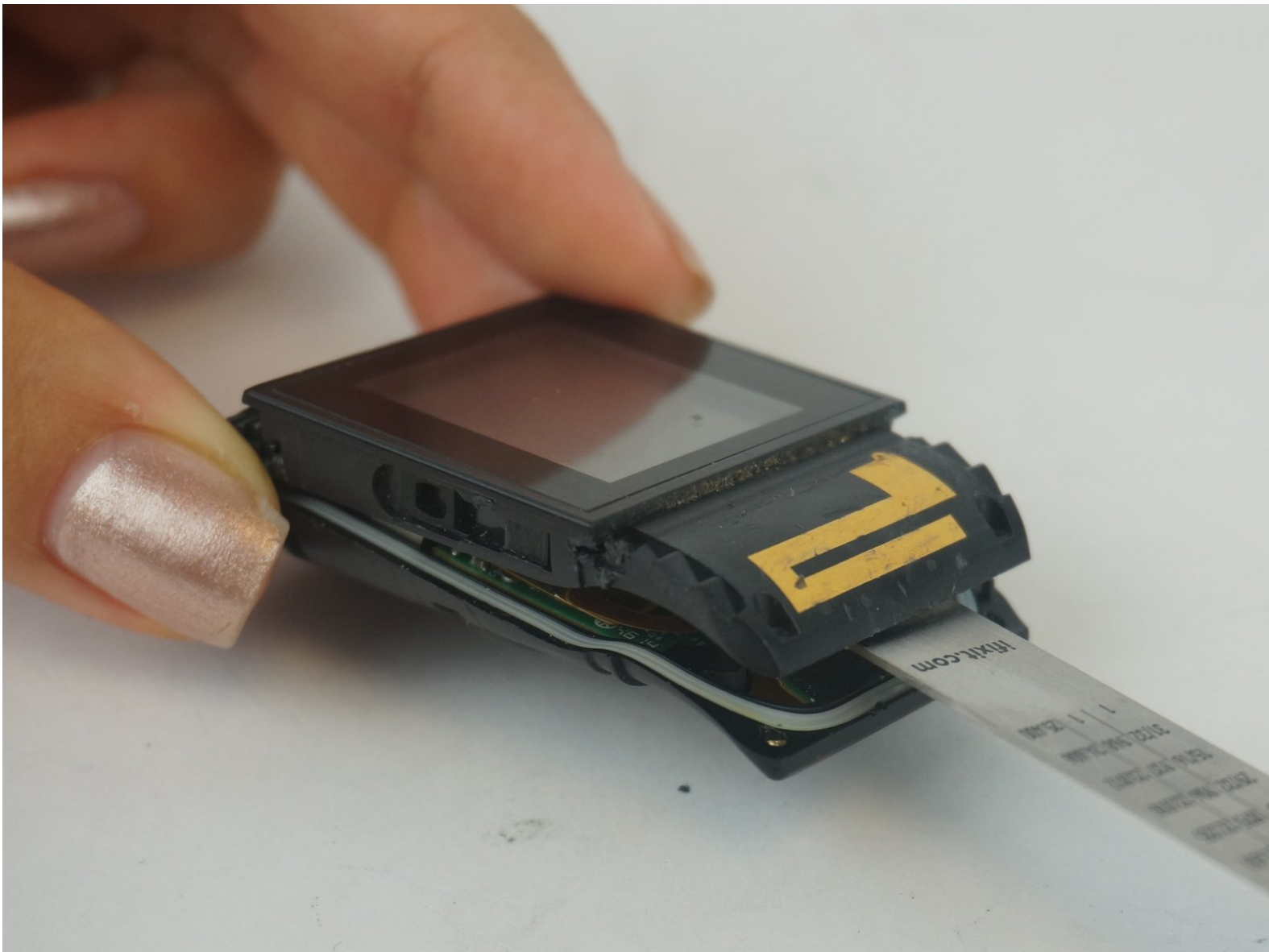




# Fitbit Surge Screen Replacement

This guide provides instructions on how to replace the LCD screen of the Fitbit Surge. Please note that replacing the screen requires cutting the wristband and it cannot be reattached.

Written By: Angela Pitts



---

## INTRODUCTION

Is your Fitbit Surge screen damaged? Read this guide to learn how to replace the LCD screen. Keep in mind that the wristband will need to be cut for this guide and it cannot be reattached.

---

### TOOLS:

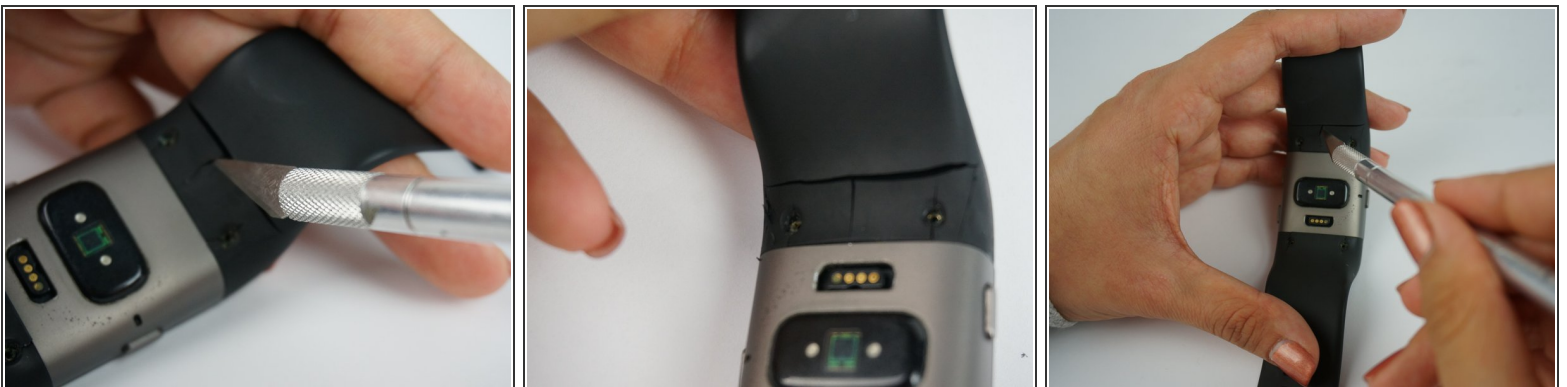
- [Pro Tech Toolkit](#) (1)
  - [Phillips PH000 Screwdriver](#) (1)
  - [iFixit 6 Inch Metal Ruler](#) (1)
  - [Metal Spudger](#) (1)
  - [Spudger](#) (1)
  - [iFixit Opening Tools](#) (1)
  - [Curved Razor Blade](#) (1)
-

## Step 1 — Screen



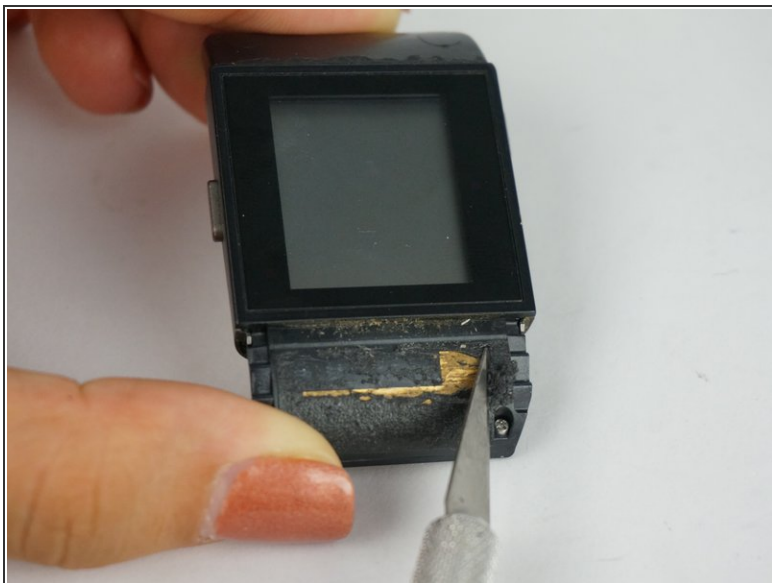
- Unscrew all four black 3 mm Phillips screws on the underside of the watch using a T5 screwdriver.

## Step 2



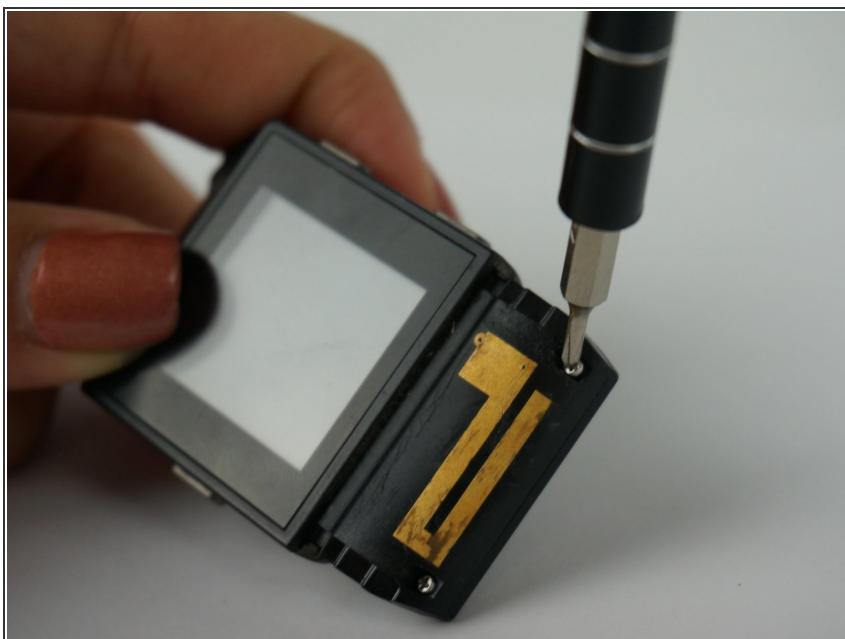
- Use an X-Acto knife to cut the band above, on either side, and in between the 2 screws.
- **Note:** Part of the band is hard plastic.
- **Caution:** Once the band is cut it cannot be reattached.

### Step 3



- Scrape away the glue beneath the hard shell portion of the band to reveal the GPS.

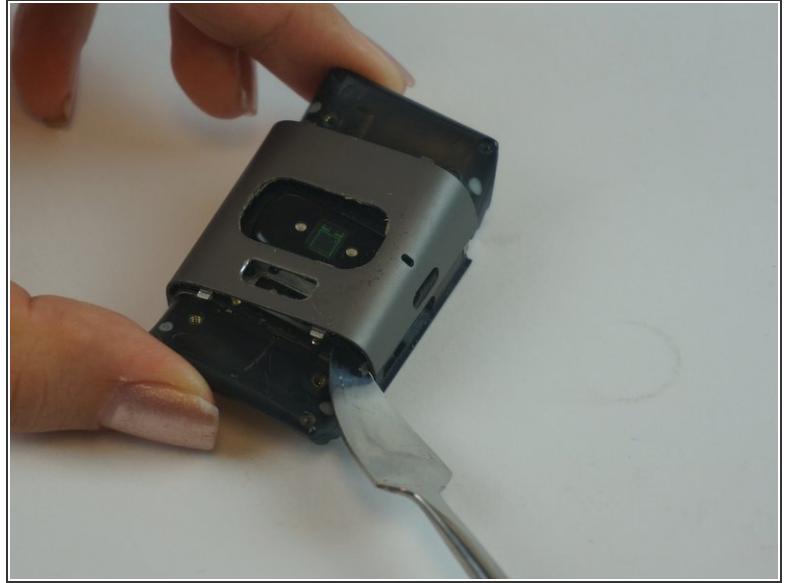
### Step 4



- Use a PH000 screw head to undo the newly revealed silver 4 mm Phillips screws that were hidden beneath the glue.

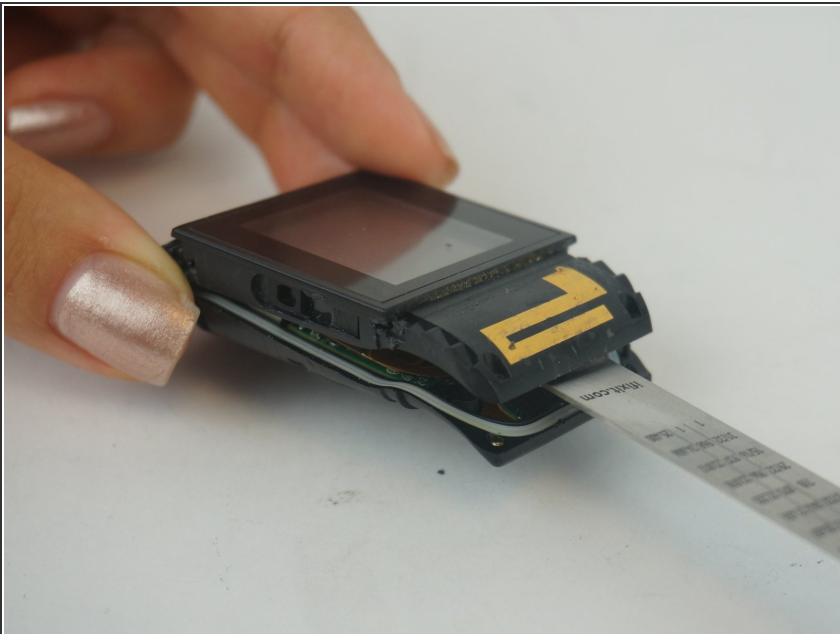


## Step 5



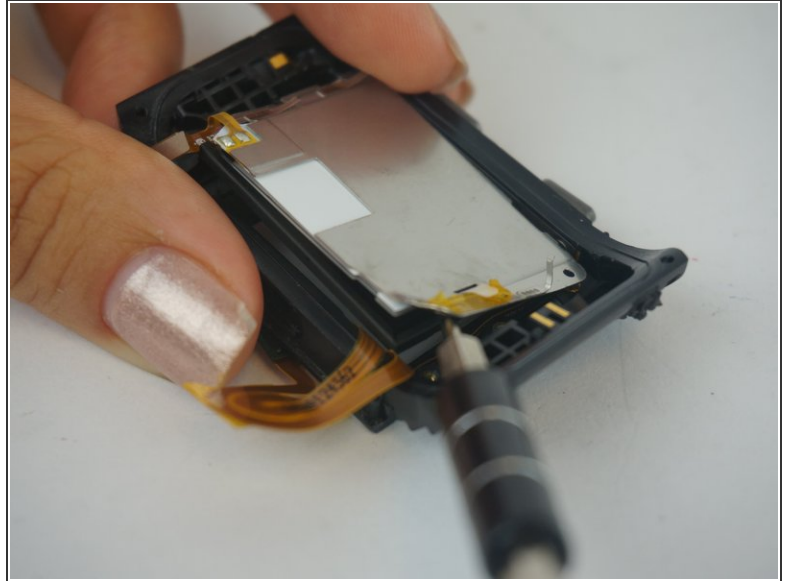
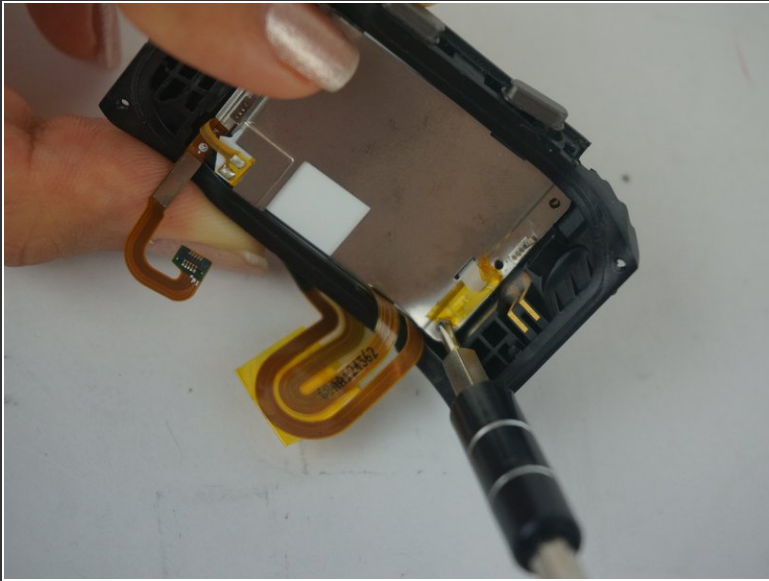
- Using a metal spudger, push down on the plastic gray square clamps on the underside of the device to dislodge the whole silver backing.
- Note: the buttons will also come off.

## Step 6



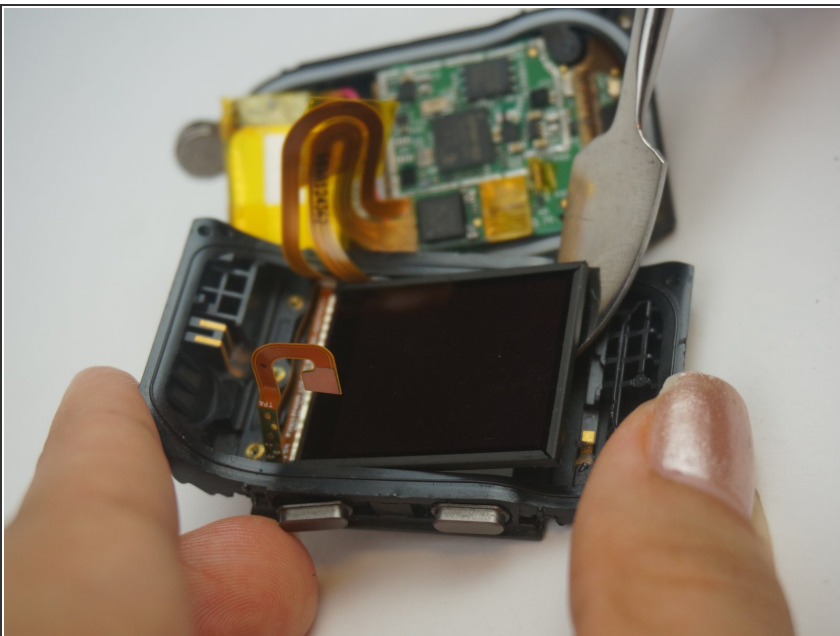
- Use a thin tool to pry the the device apart by lodging it between the clock face and back side of the device.
- **Note:** A spudger may not be thin enough to fit in the seam of the device. We used the 6 inch metal ruler from the Pro Tech Toolkit.

## Step 7



- Remove the protective cover underneath the clock face, by unscrewing the three 2 mm Phillips screws using a PH000 screwdriver.
- Lift the protective cover to remove it and reveal the device's screen.

## Step 8



- Remove the LCD screen from the clock face.

To reassemble your device, follow these instructions in reverse order.

Please note that the band cannot be reattached as it must be cut in order to replace the screen.