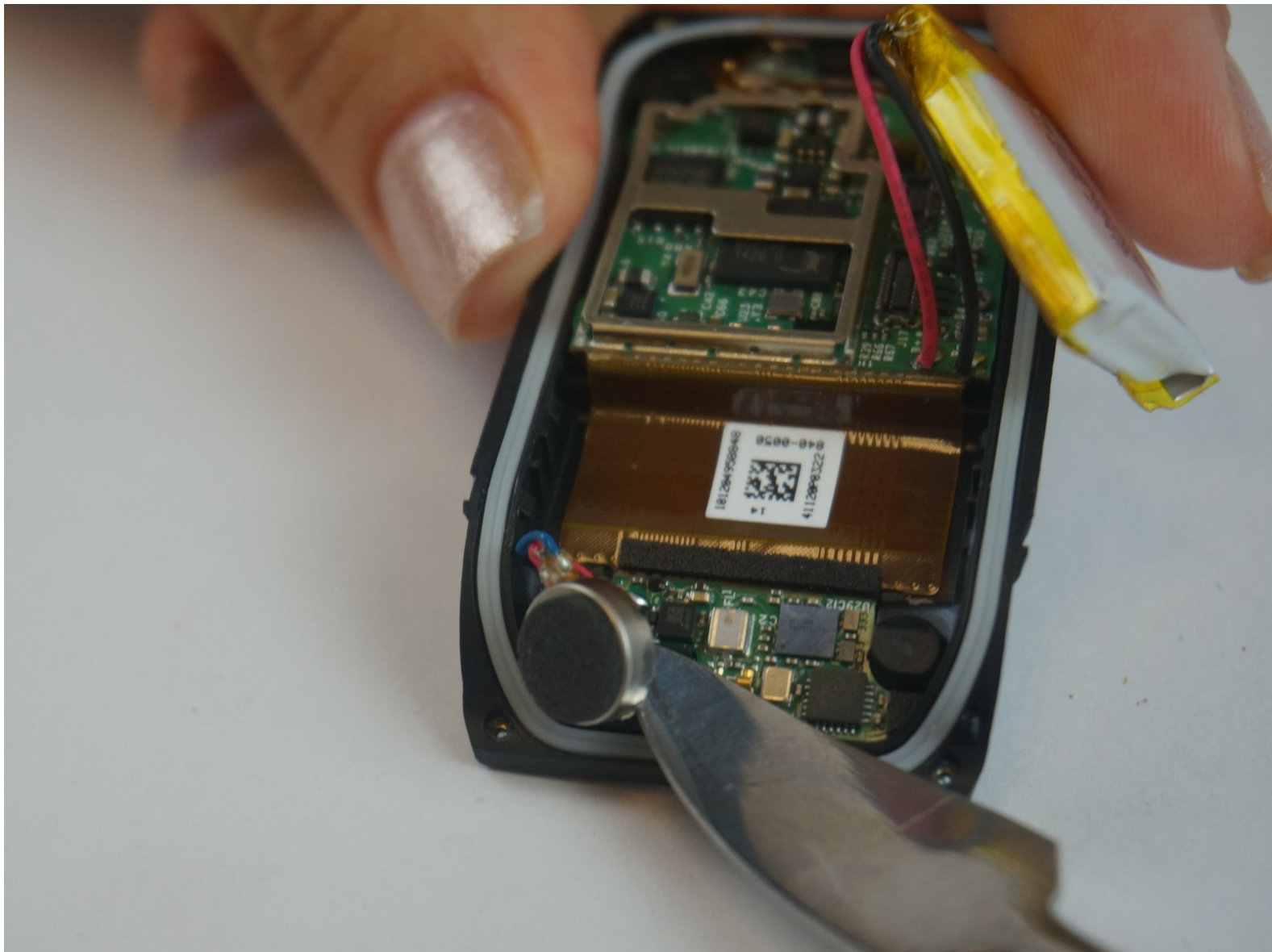




# Fitbit Surge Battery Replacement

This guide provides instructions on how to replace the battery on the Fitbit Surge.

Written By: Angela Pitts



## INTRODUCTION

Is your Fitbit Surge battery not charging no matter what you do? Read this guide to learn how to replace the battery, but keep in mind that you will need to cut the wristband in order to complete this repair and the band cannot be reattached.

---

### TOOLS:

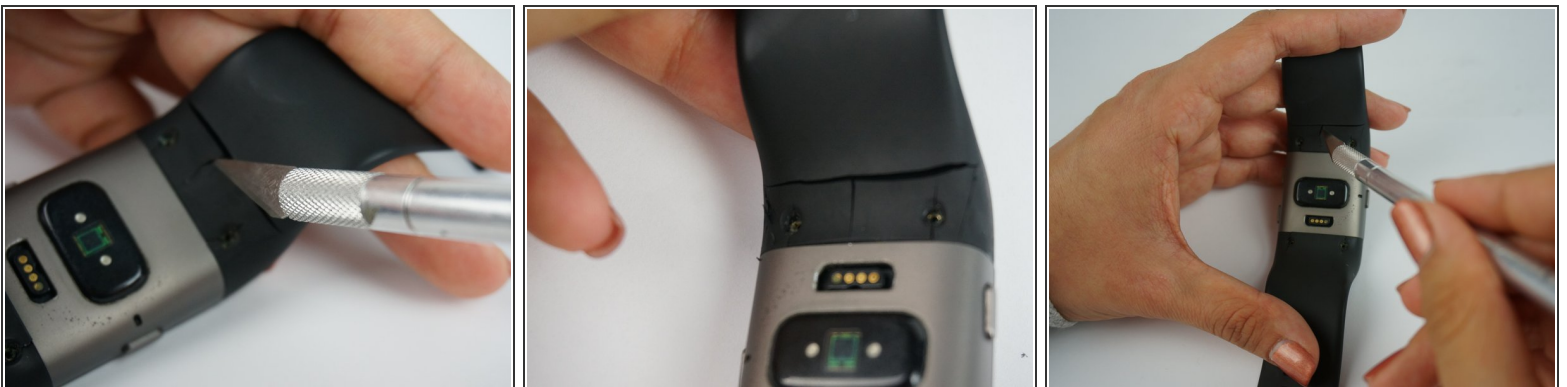
- [Pro Tech Toolkit](#) (1)
  - [Phillips PH000 Screwdriver](#) (1)
  - [Metal Spudger](#) (1)
  - [iFixit 6 Inch Metal Ruler](#) (1)
  - [Curved Razor Blade](#) (1)
-

## Step 1 — Battery



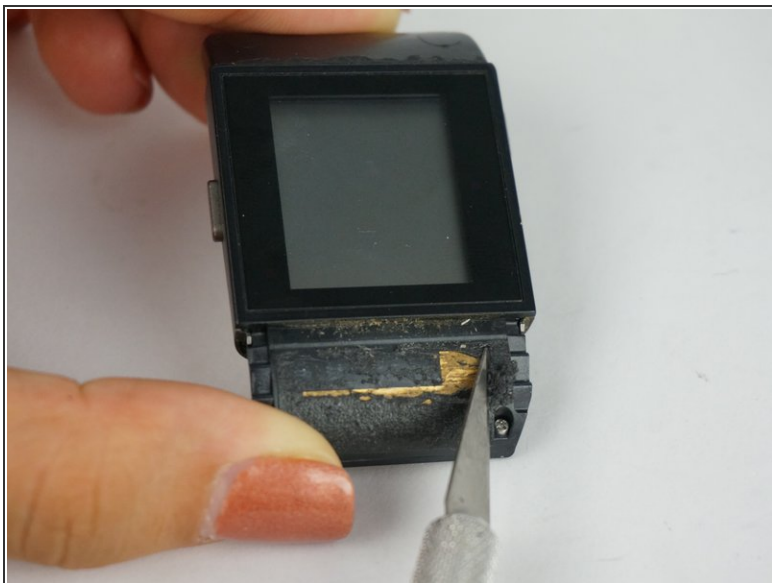
- Unscrew all four black 3 mm Phillips screws on the underside of the watch using a T5 screwdriver.

## Step 2



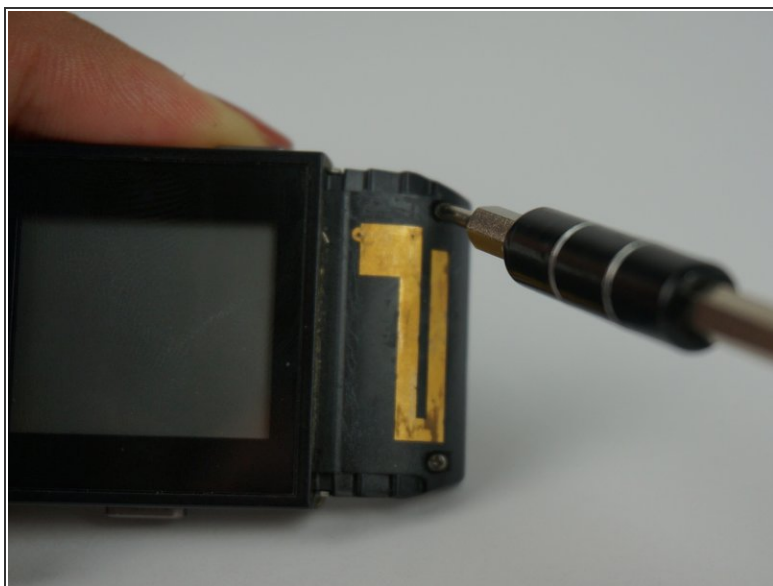
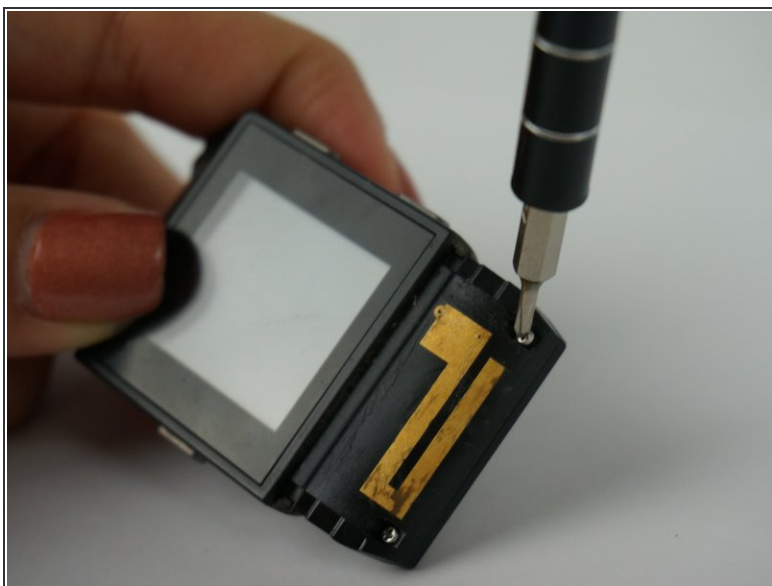
- Use an X-Acto knife to cut the band above, on either side, and in between the 2 screws.
- **Note:** Part of the band is hard plastic.
- **Caution:** The band cannot be reattached once it is cut.

### Step 3



- Scrape away the glue beneath the hard shell portion of the band to reveal the GPS.

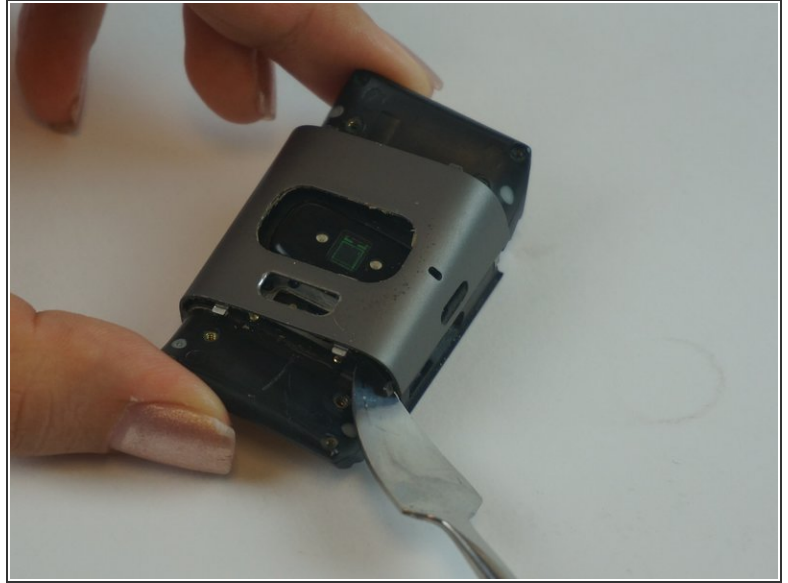
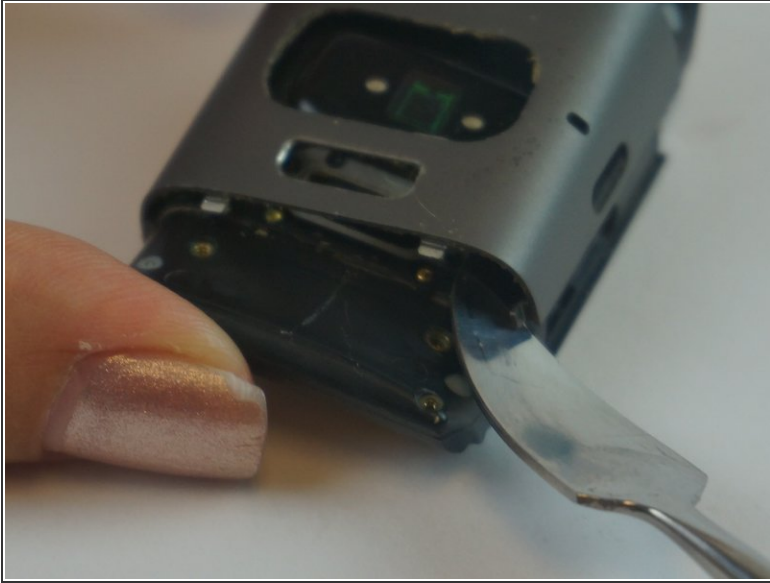
### Step 4



- Use a PH000 screw head to undo the newly revealed silver 4 mm Phillips screws that were hidden beneath the glue.

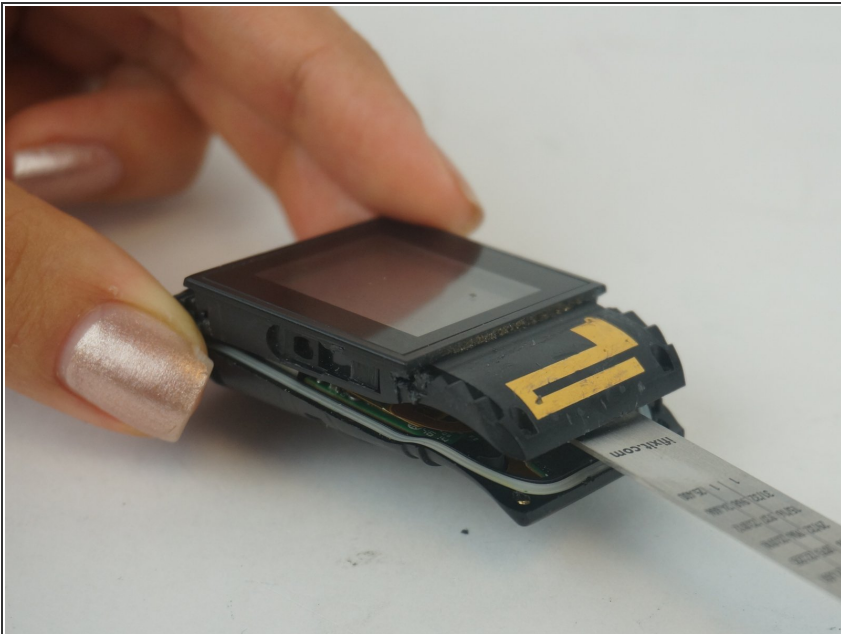


## Step 5




- Using a metal spudger, push down on the plastic gray square clamps on the underside of the device to dislodge the whole silver backing.
- Note: the buttons will also come off.

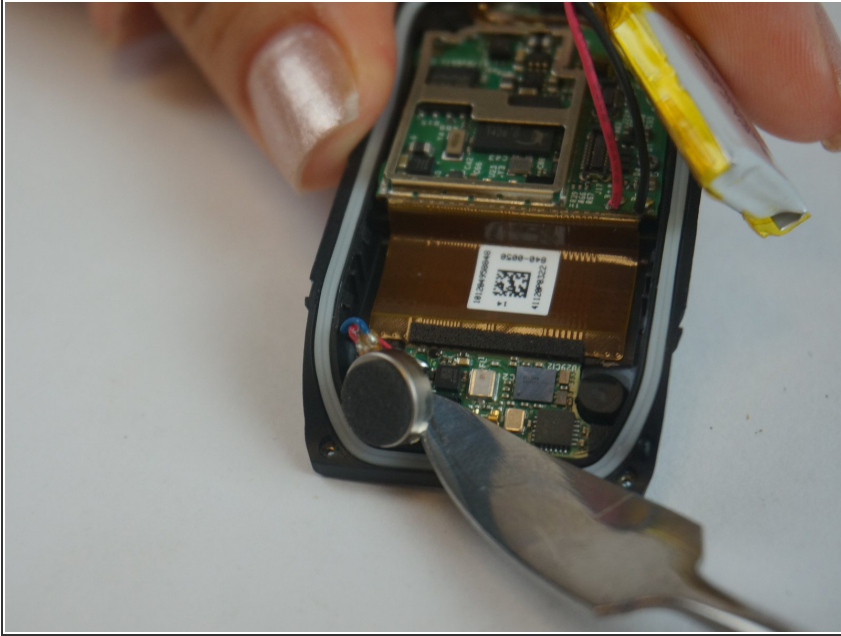
## Step 6



- Use a pick or small flathead to remove the 4 metal clamps holding device together.
  - Use a thin tool to pry the the device apart by lodging it between the clock face and back side of the device.
- i Note:** a spudger may not be thin enough to fit in the seam of the device. We used the 6 inch metal ruler from the Pro Tech Toolkit.

 Go slowly and carefully disconnect two cables before fully opening.

## Step 7



- Gently remove the battery.

To reassemble your device, follow these instructions in reverse order. Keep in mind that the band will need to be cut for this repair and it cannot be reattached.