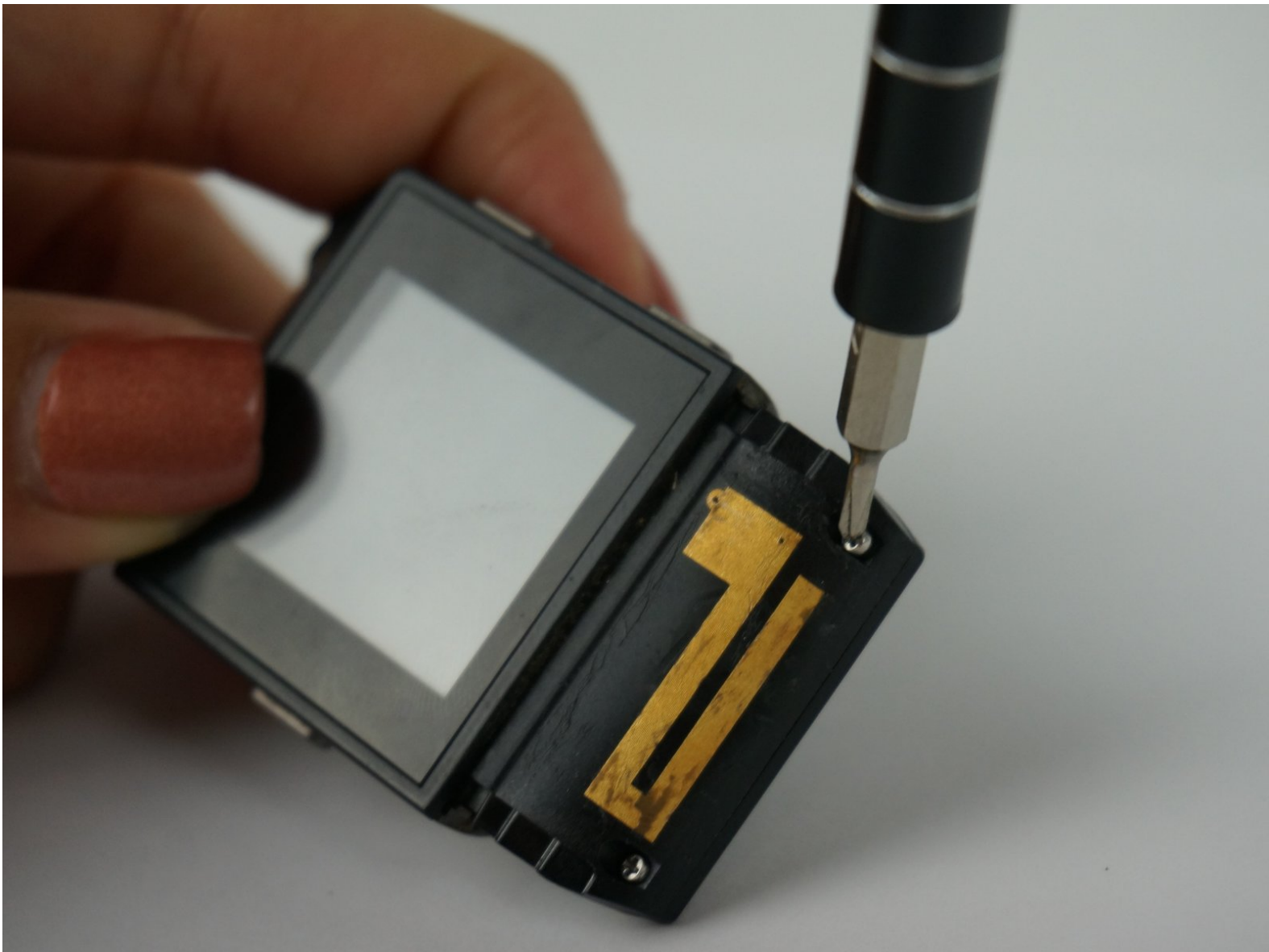




Fitbit Surge GPS Replacement

This guide provides instructions on how to replace the GPS in the Fitbit Surge.

Written By: Angela Pitts



INTRODUCTION

Having trouble with your Fitbit Surge's GPS? Read this guide to learn how to replace the GPS, but keep in mind that you will need to cut the wristband in order to complete this repair and the band cannot be reattached.

TOOLS:

- [Pro Tech Toolkit](#) (1)
 - [Phillips PH000 Screwdriver](#) (1)
 - [Curved Razor Blade](#) (1)
-

Step 1 — Fitbit Surge GPS Replacement



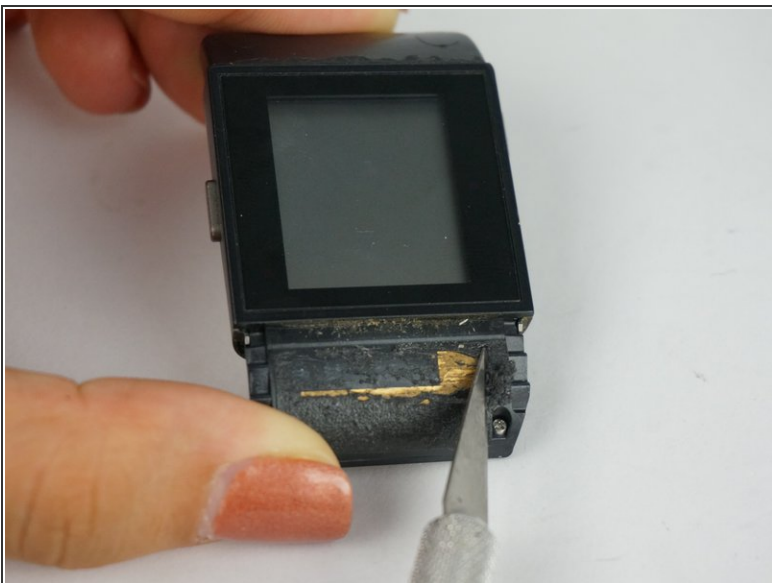
- Unscrew all four black 3 mm Phillips screws on the underside of the watch using a T5 screwdriver.

Step 2



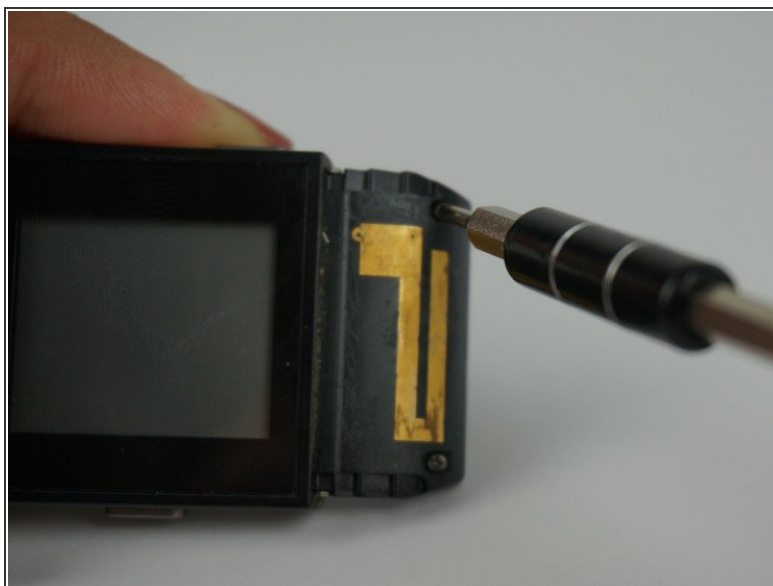
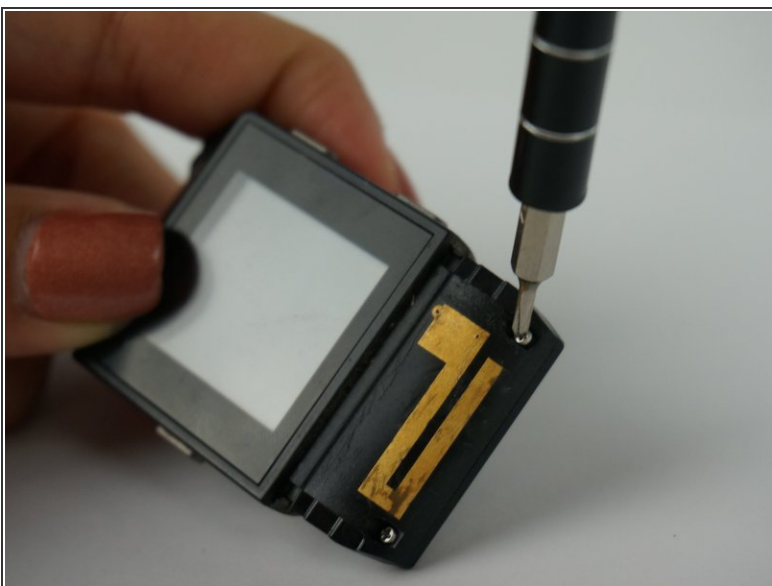
- Use an X-Acto knife to cut the band above, on either side, and in between the 2 screws.
- **Note:** Part of the band is hard plastic.
- **Caution:** Once the band is cut it cannot be reattached.

Step 3



- Scrape away the glue beneath the hard shell portion of the band to reveal the GPS.

Step 4



- Use a PH000 screw head to undo the newly revealed 4 mm Phillips screws that were hidden beneath the glue.

To reassemble your device, follow these instructions in reverse order. Keep in mind that you will need to cut the band for this guide and it cannot be reattached.