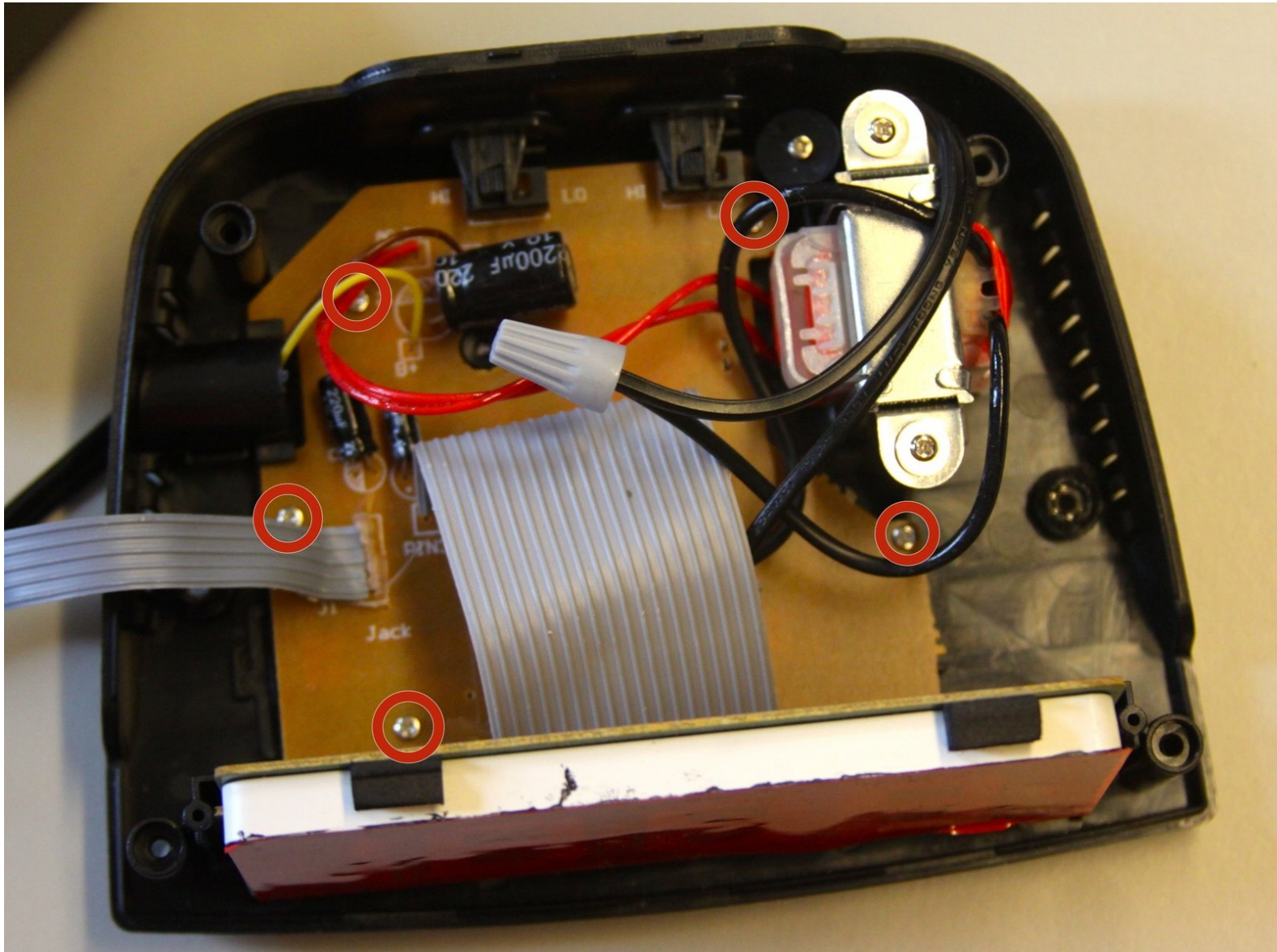




Written By: Nicholas Roppolo





## TOOLS:

- [Tweezers](#) (1)
  - [Phillips #00 Screwdriver](#) (1)
-

## Step 1 — Opening the Device



- Flip device upside down and remove the 4 foam pads at each corner.

## Step 2



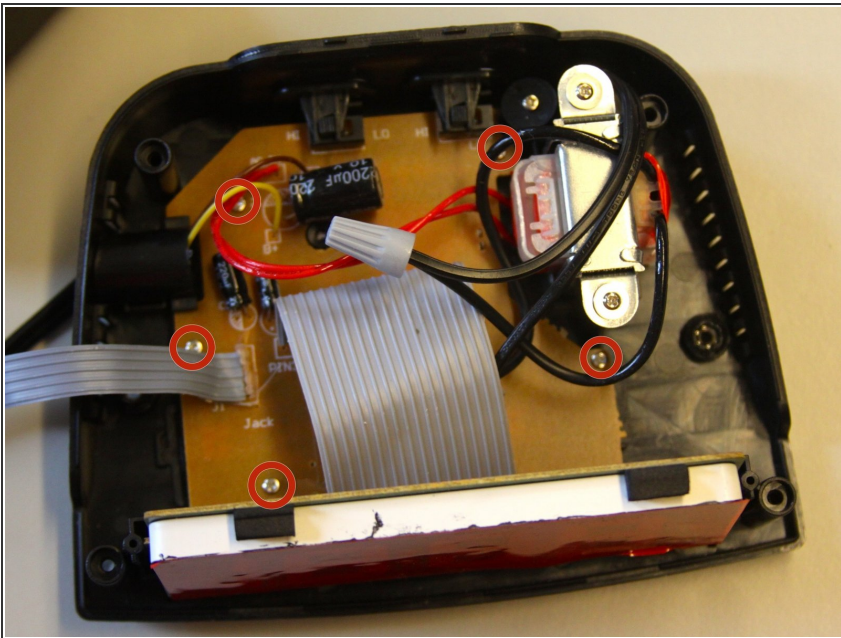
- Remove the 4 screws using a Philips Screwdriver.

### Step 3



- Gently lift the case off of the body and set down in a safe place.

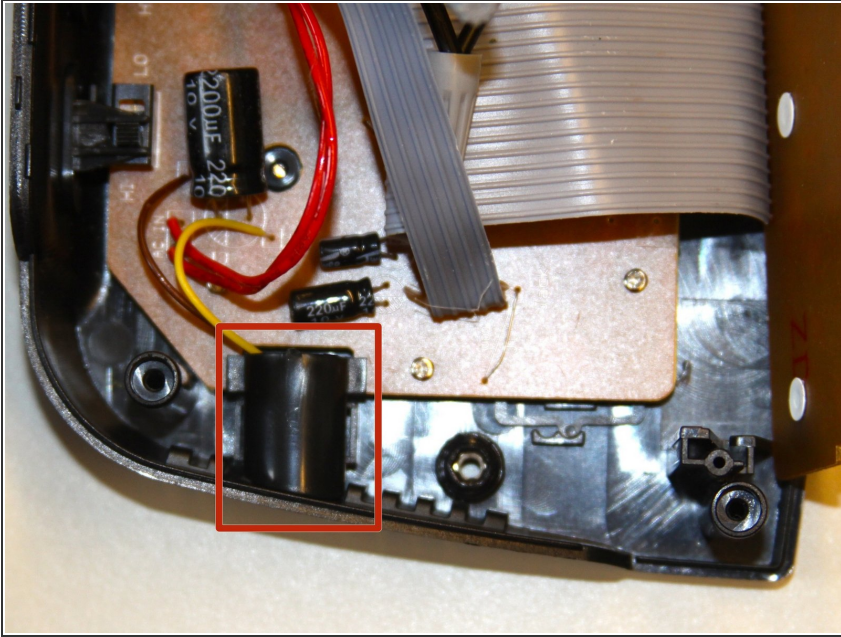
### Step 4 — Fixing a AcuRite Intelli-Time Alarm Clock Faulty Alarm



- Unscrew the 5 screws in the base circuit board.

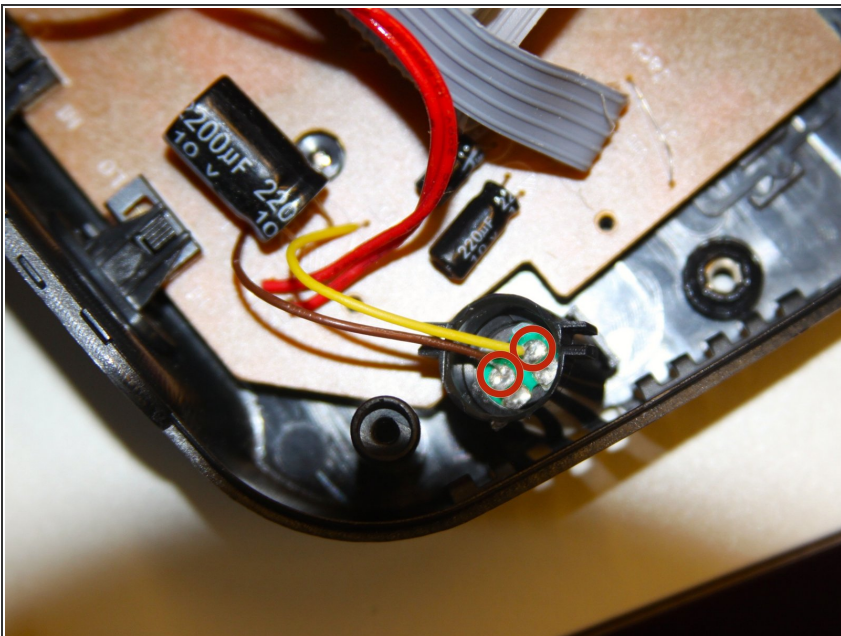


## Step 5



- Use the tweezers to slightly lift the circuit board, allowing the cylindrical alarm piece to slide out.

## Step 6



- Check if the wires are secured.

## Step 7



- If they are not attached, you may re-solder it together. If they are attached, that means it is a faulty alarm and should replace it.

To reassemble your device, follow these instructions in reverse order.