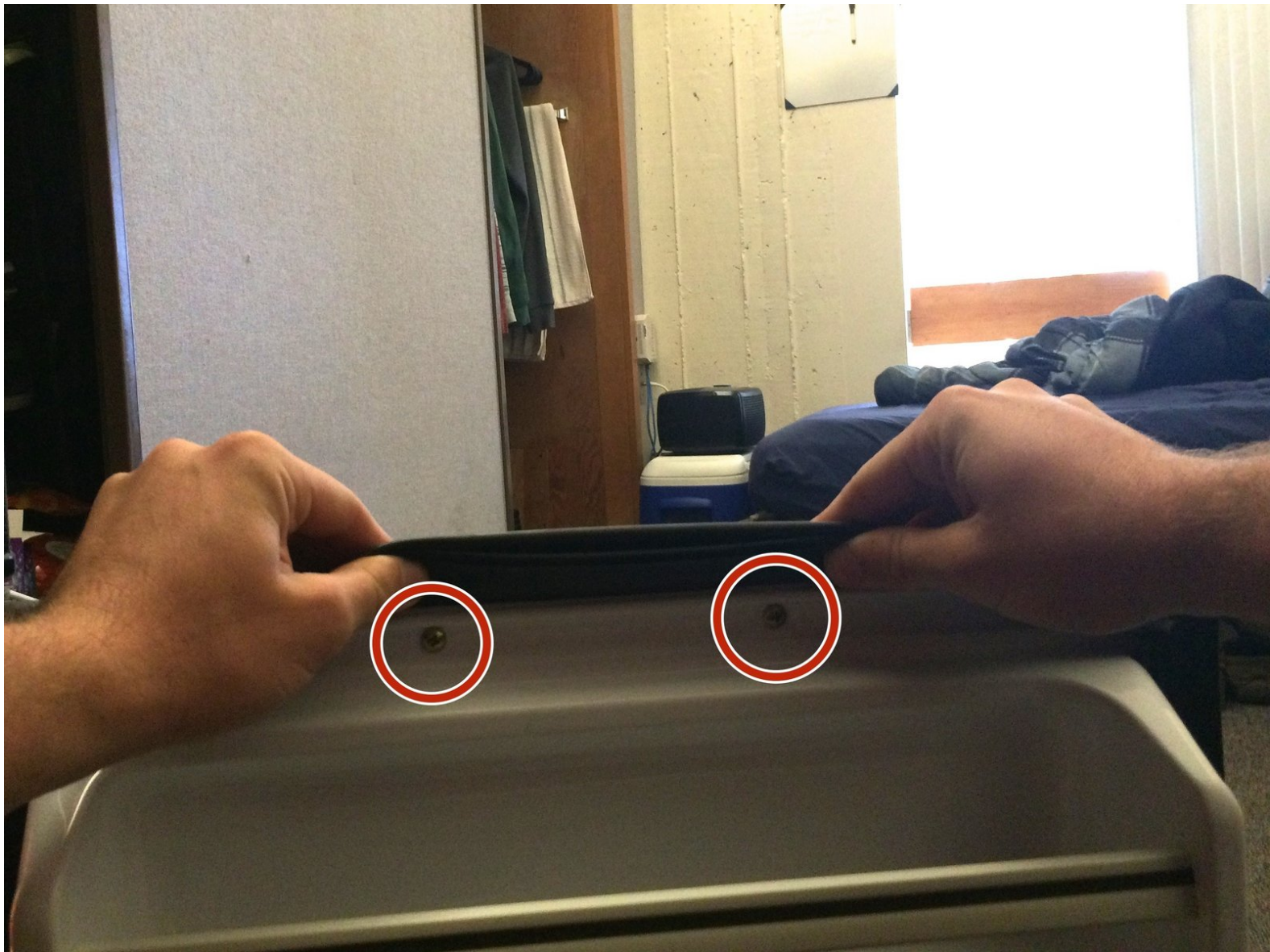




Fixing a Refrigerator Door Seal

This guide will accomplish how to successfully dismantle, clean, and reattach a refrigerator door seal that is not sealing properly.

Written By: Curtis Rosol



INTRODUCTION

If your refrigerator door is constantly popping open due to a weak seal, then this guide is the perfect place to look. Many people assume that if the door seal is not working, then either the whole door or the entire refrigerator has to be replaced. In reality, its possible that only the seal needs to be replaced, but most of the time simply washing and realigning the seal is enough to fix it. This guide shows a simple way to clean your current refrigerator door seal and reattach it to your door.



TOOLS:

- [Small Phillips Head Screwdriver](#) (1)
 - [Silicone Grease](#) (1)
 - [Paper Towels](#) (1)
-

Step 1 — Fixing a Refrigerator Door Seal



- Grab a Phillips Head Screw Driver
 - Lift up the door seal and locate the screws underneath that hold the seal in place. Loosen the screws to where they are pretty loose, but not out of their hole.
- i Note** To save energy, you can turn off your refrigerator before proceeding to steps 2-6.

Step 2



- After all the screws are loose, the door seal should slide off fairly easy. Slowly remove the door seal with your hands by peeling it off the seal's shell.

Step 3



- Thoroughly wash the door seal in Soap and Water
 - Using a paper towel (or regular towel), dry the seal.
- Note** If your seal has cracks in it, you will need to replace it. If this is the case, skip this step.

Step 4



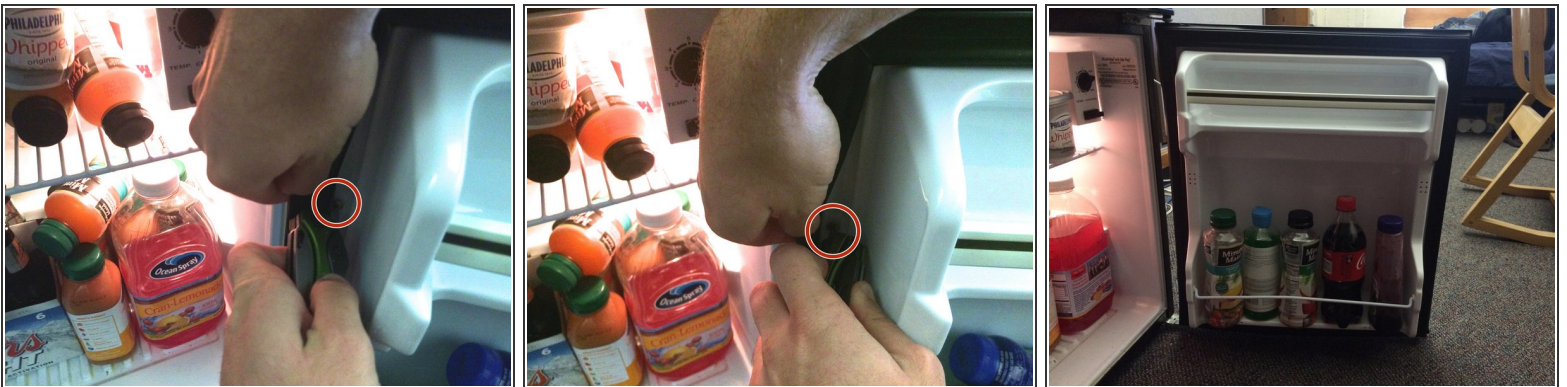
- On the side that connects to the refrigerator unit, apply a thin layer of silicon grease. This will improve functionality as well as prevent the seal from cracking in the future.

Step 5



- To reattach the seal, feed the back of the seal behind the white frame.
- It is easiest to do this by starting at any corner and completing one side at a time.

Step 6



- Make sure the white shell is holding the seal in place on all sides.
- Tighten all of the screws back in place.

Your refrigerator should now stay shut properly, and the seal should be tightly secured in place. To assure proper functionality, check every once in awhile to make sure the seal is firmly in place.