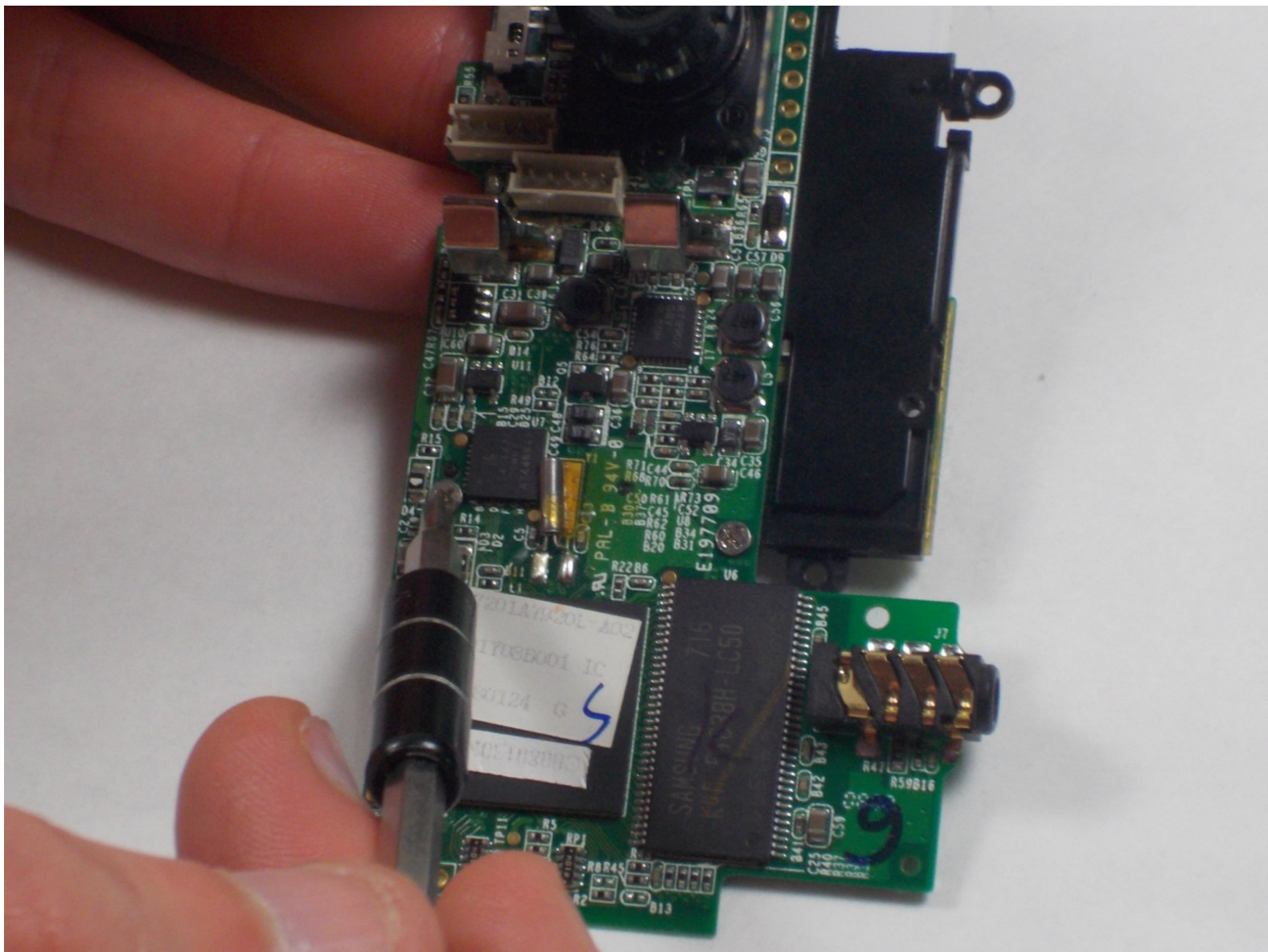




Flip Video Ultra Circuit Board Replacement

If the device is unresponsive due to a defective circuit board, this guide will walk you through the replacement.

Written By: Nathaniel Ruf



INTRODUCTION

This guide will walk you through how to remove and replace the circuit board should your device be broken or malfunctioning. You will need a # 1 Phillips Head screwdriver, a plastic opening tool and tweezers. This easy process should take no more than 15 minutes.



TOOLS:

- [Phillips #1 Screwdriver](#) (1)
 - [iFixit Opening Tools](#) (1)
 - [Tweezers](#) (1)
-

Step 1 — Circuit Board



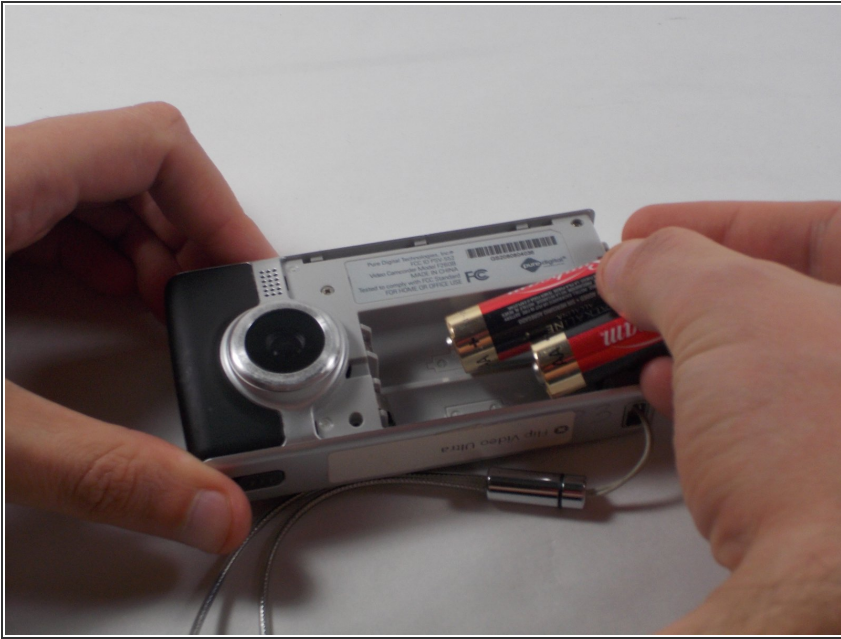
- Unlock the battery cover by sliding the switch to the unlock position.

Step 2



- Remove the battery cover by sliding it down the camera.

Step 3



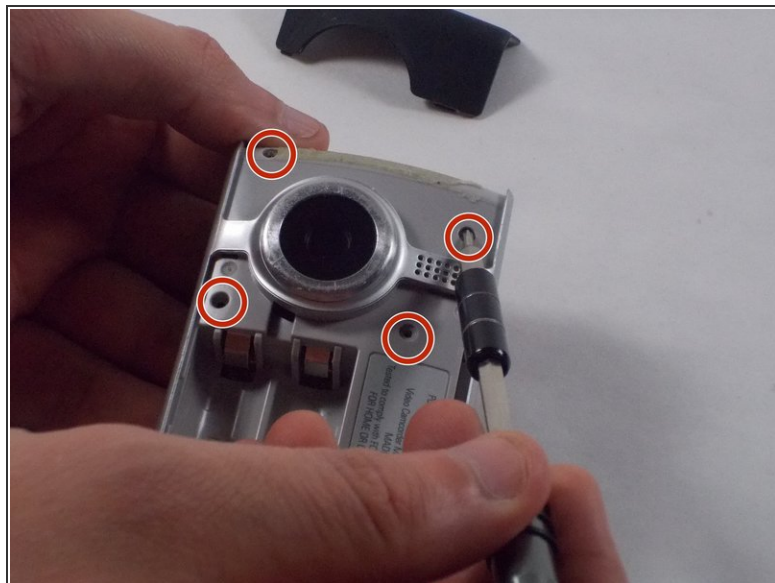
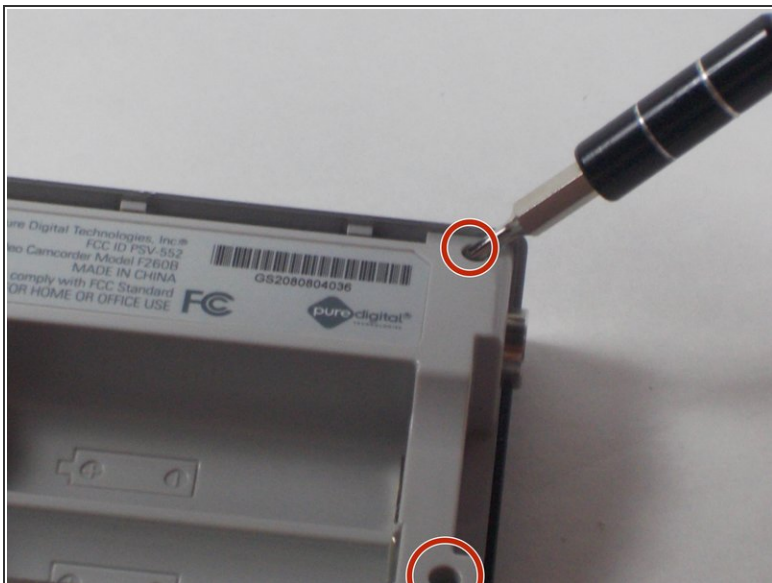
- Remove the batteries

Step 4



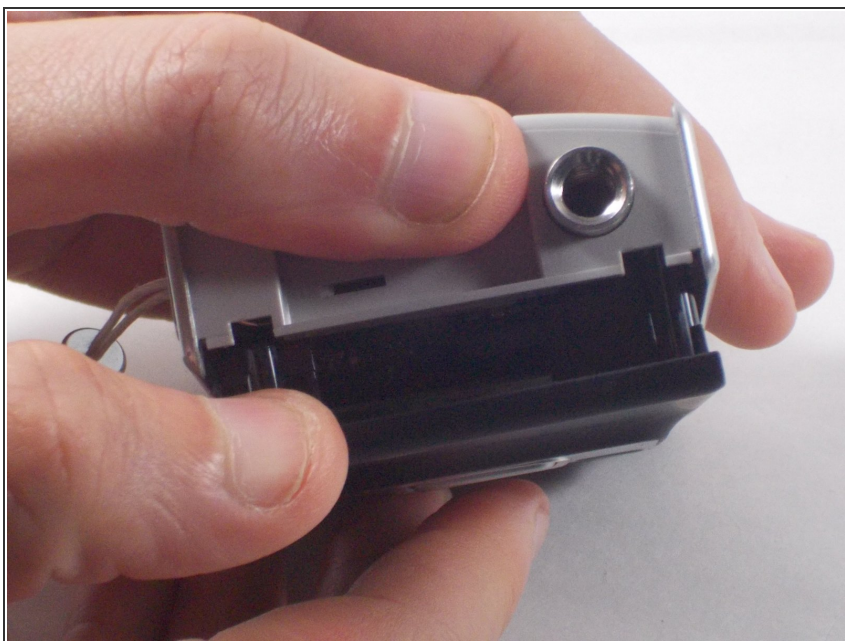
- Slide the black upper casing off from the device.

Step 5



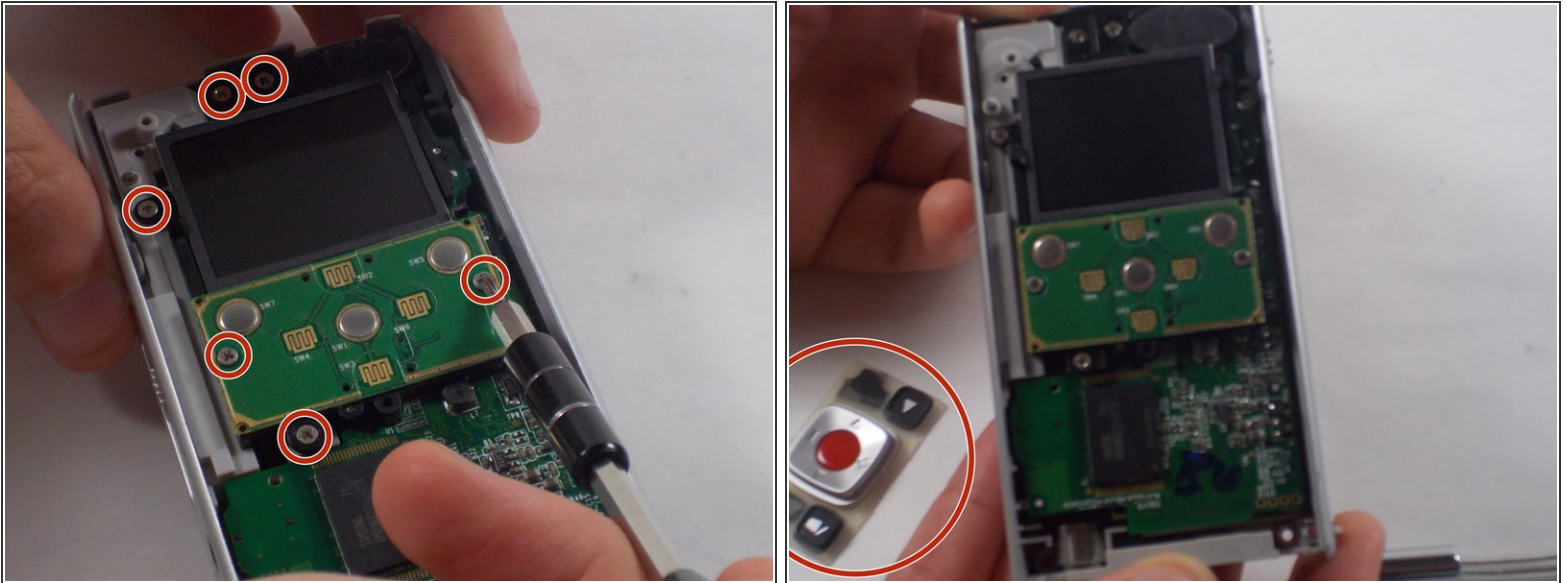
- Remove the six 1mm screws from the back and upper casing with the Phillips Head screwdriver.

Step 6



- Remove the top casing from the bottom to reveal the inner circuit board.

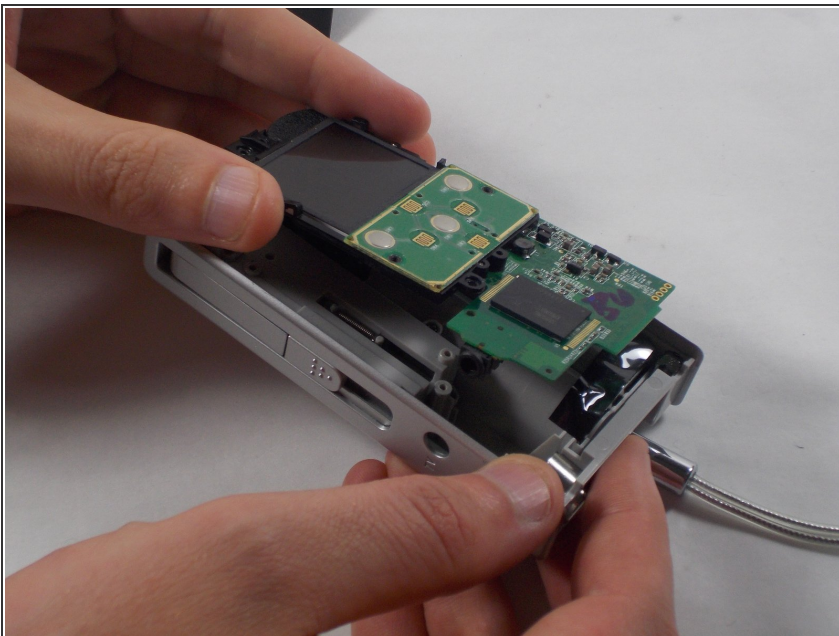
Step 7



i When removing the back panel, the rubber buttons will become loose and likely fall off the board. This is normal and can easily be placed back on the board once finished.

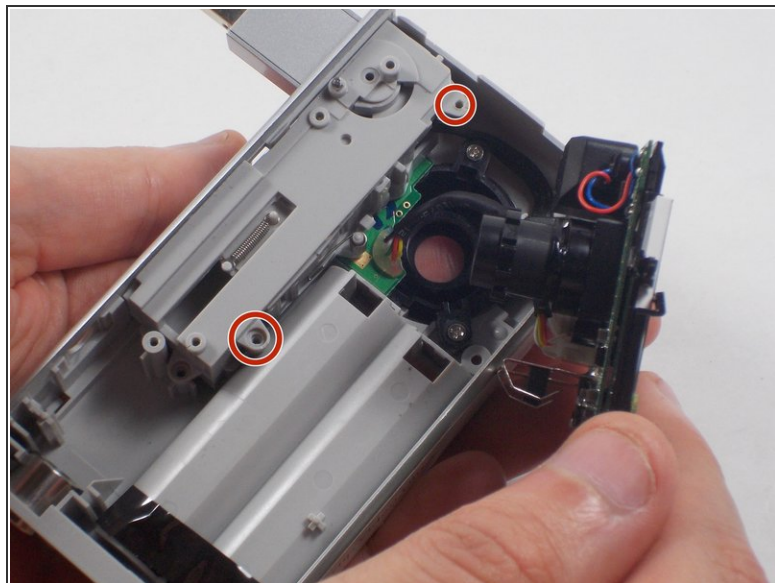
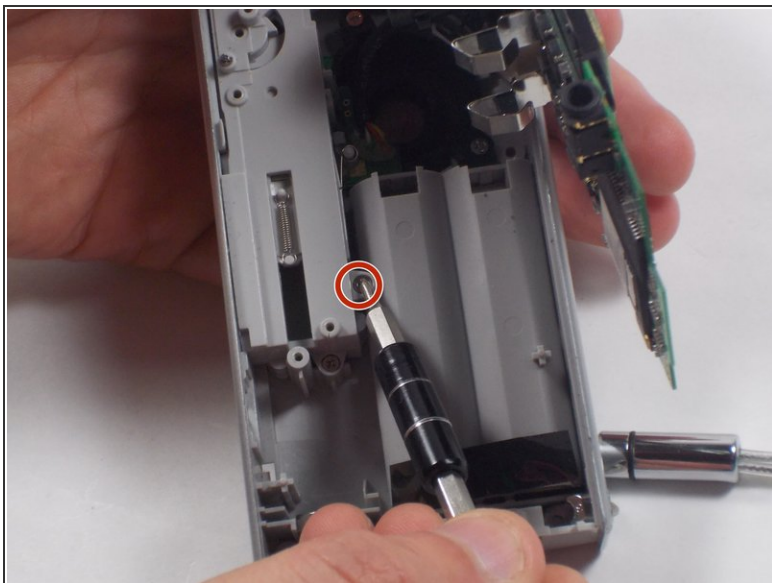
- Remove the six 1mm screws with the 1 Phillips head screwdriver.

Step 8



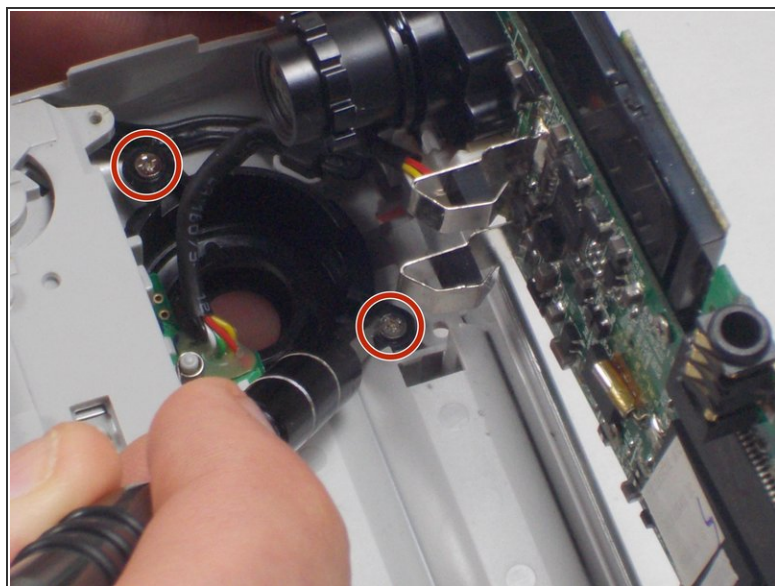
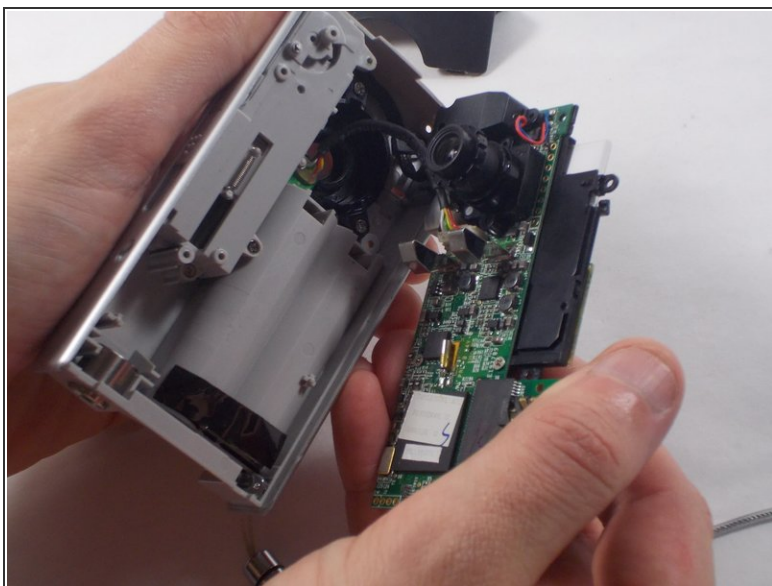
- Gently separate the circuit board from the casing.

Step 9



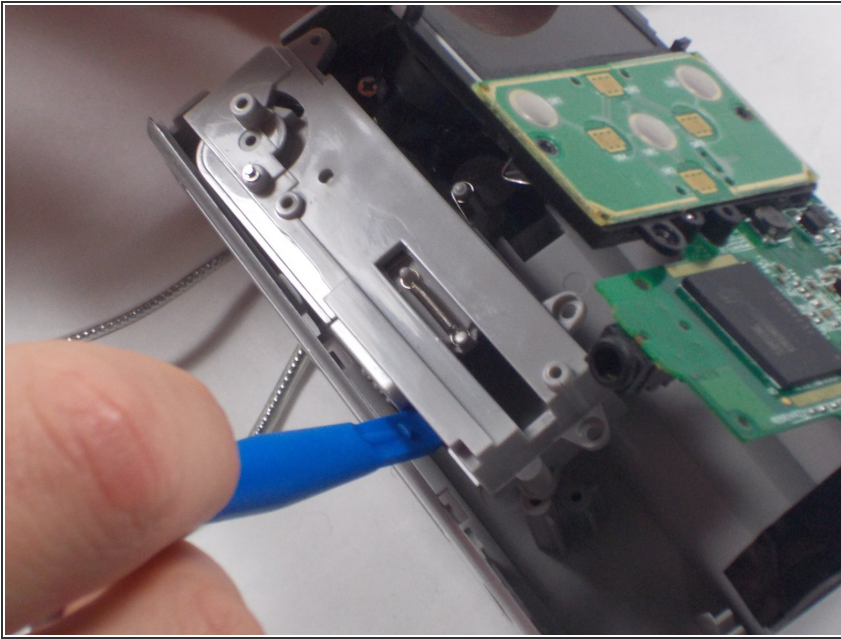
- Unscrew the single 1mm screw from USB housing unit.

Step 10



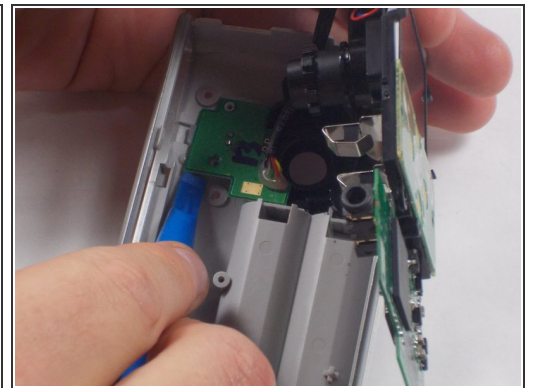
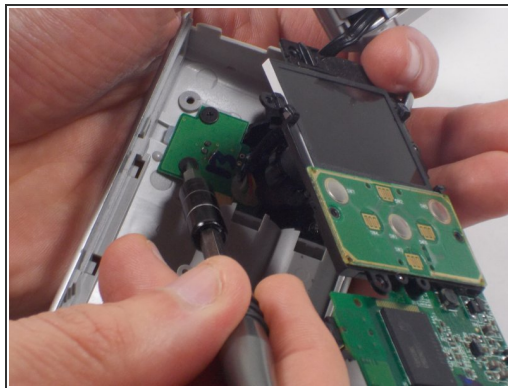
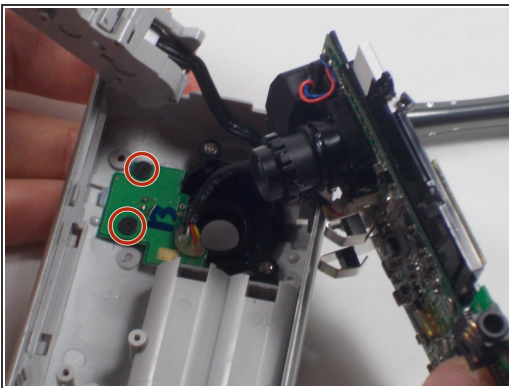
- Unscrew the 2 1mm screws and gently separate camera wires from plastic casing.

Step 11



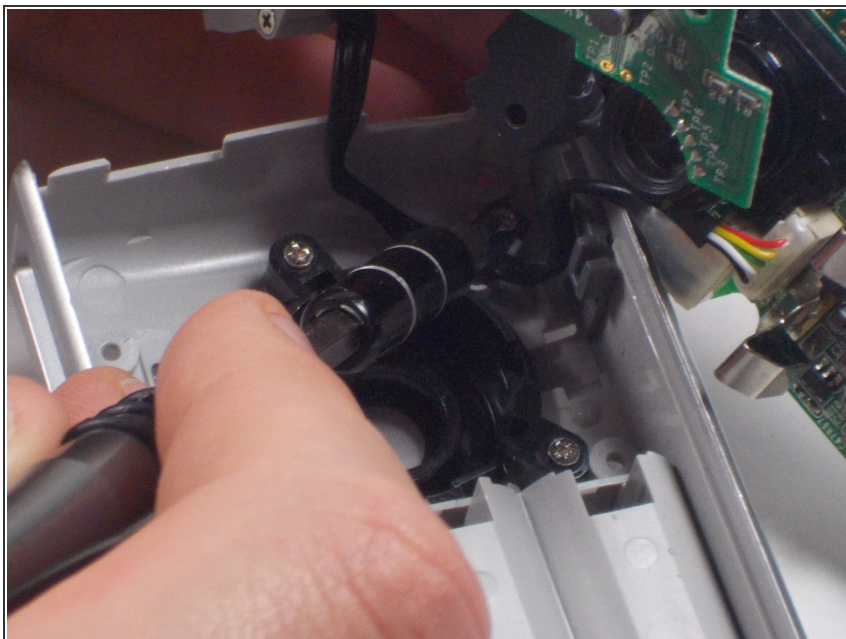
- Gently pry out the USB housing unit with the Ifixit Opening Tool.

Step 12



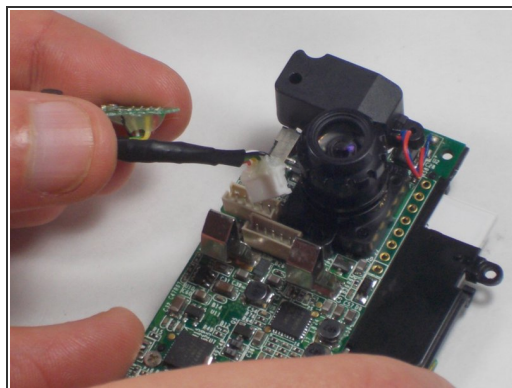
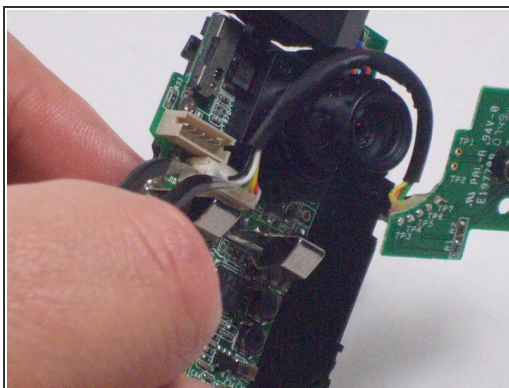
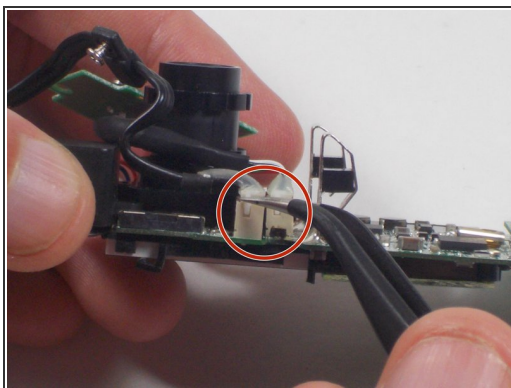
- Remove the two 1mm screws and separate the circuit board and camera from the plastic casing.

Step 13



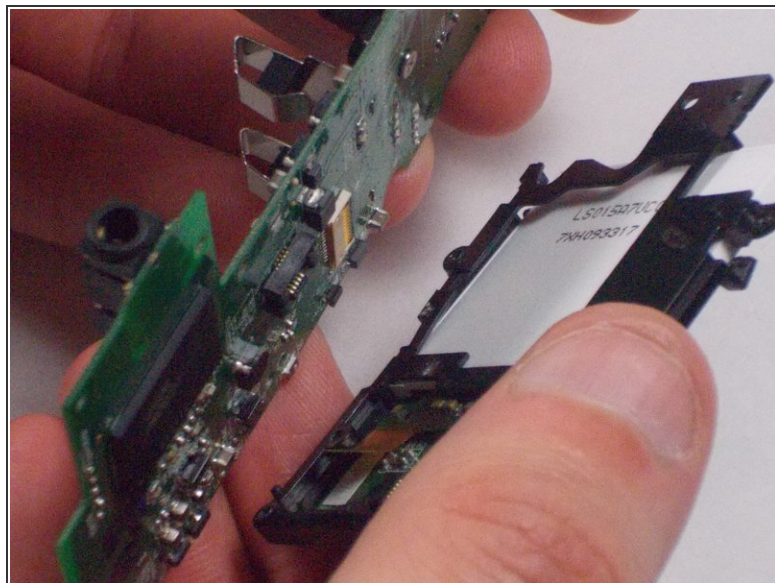
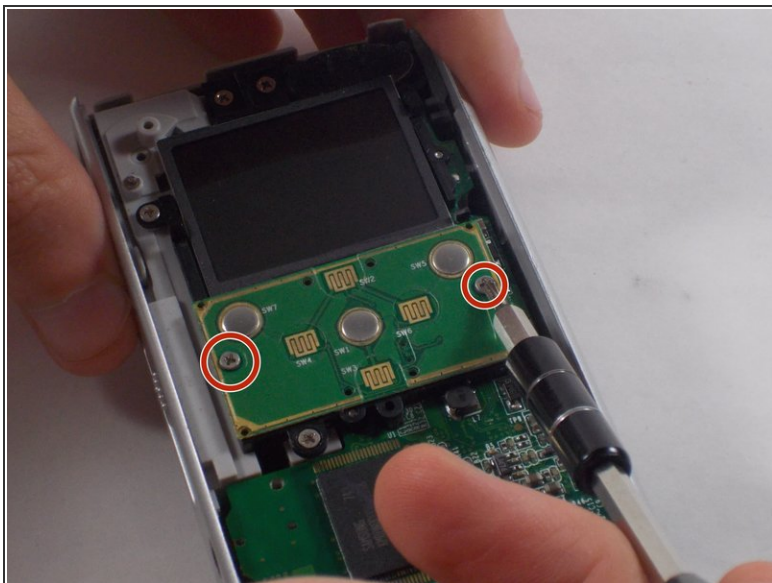
- Unscrew the camera housing unit from the plastic case.

Step 14



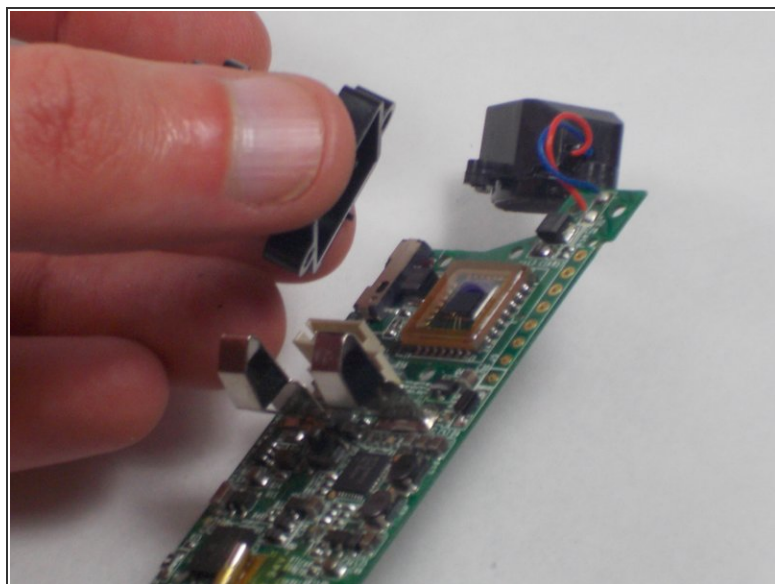
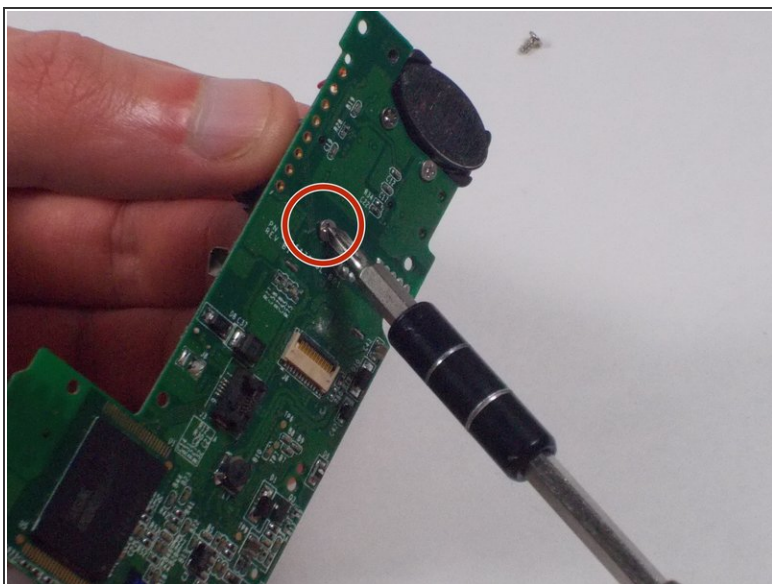
- With tweezers, remove the microphone and USB connections.

Step 15



- Unscrew the two 1mm screws from the board shown. Remove screen from circuit board.

Step 16



- Remove the single 2.1 mm screw and separate camera from the circuit board.

To reassemble your device, follow these instructions in reverse order.