



# Floor Pump Drive Hose Replacement

Replace the drive hose on your floor pump.

Written By: iRobot



## INTRODUCTION

Over time, the hose on your steel floor drive pump may wear or puncture. Use this guide to install a new hose.



### TOOLS:

- [Precision Utility Knife](#) (1)
- [Large Needle Nose Pliers](#) (1)



### PARTS:

- [Steel Floor Drive Replacement Hose](#) (1)


## Step 1 — Drive Hose



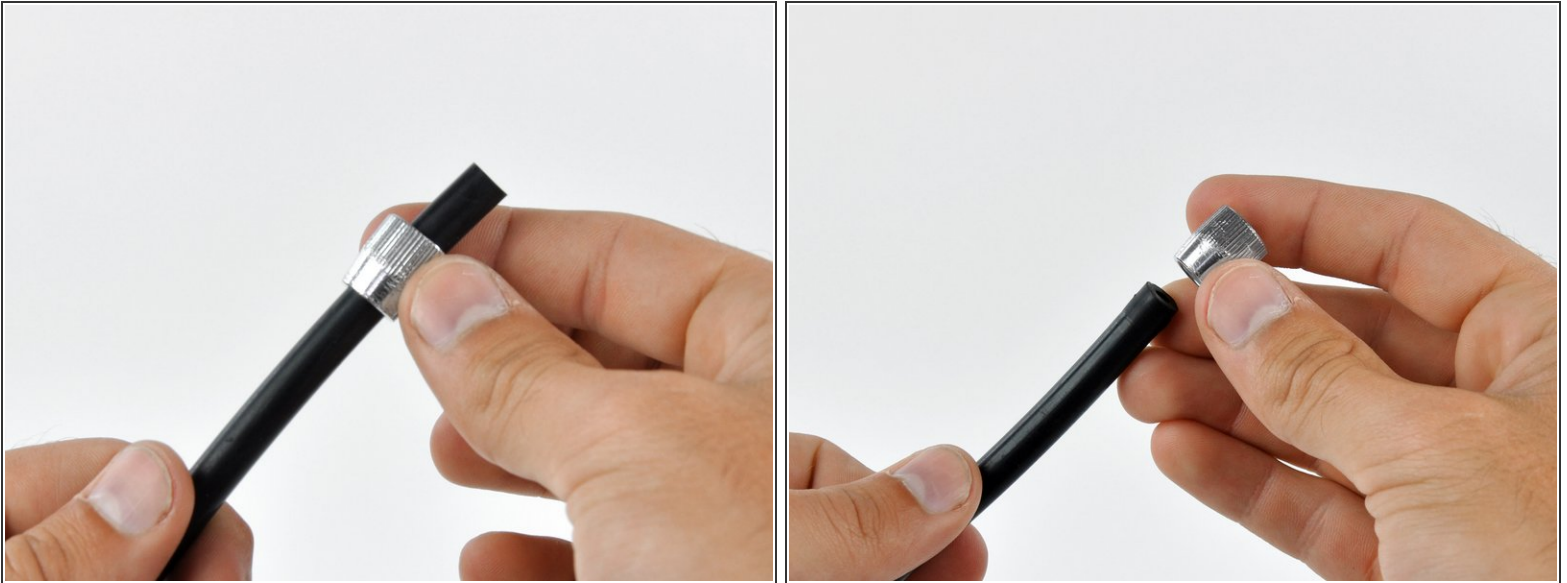
- Use a pair of pliers to loosen the hose pinch by turning it counterclockwise a couple of turns.
- Continue to loosen the hose pinch by hand until it comes free from its threads.
- Slide the hose pinch down the tube so that it does not interfere with removing the hose.

## Step 2



- Using a hobby knife, carefully slice a slit in the bottom of the hose to allow it to slide off.  
 Be careful and go slowly so as not to damage the nipple underneath.
- Use a metal prying tool or flathead screwdriver to pry the hose up off of the nipple.
- Remove the hose from the pump.

### Step 3



- Slide the hose pinch off of the end of the old hose and onto the new hose.
- ☑ Be sure that the threaded end of the hose pinch faces toward the open end of the new hose.

### Step 4



- Use a metal rod or screwdriver to widen the new hose so that it will fit over the nipple.
- Slide the hose in place.
- Push down on the hose clamp while twisting it clockwise to thread it in place.