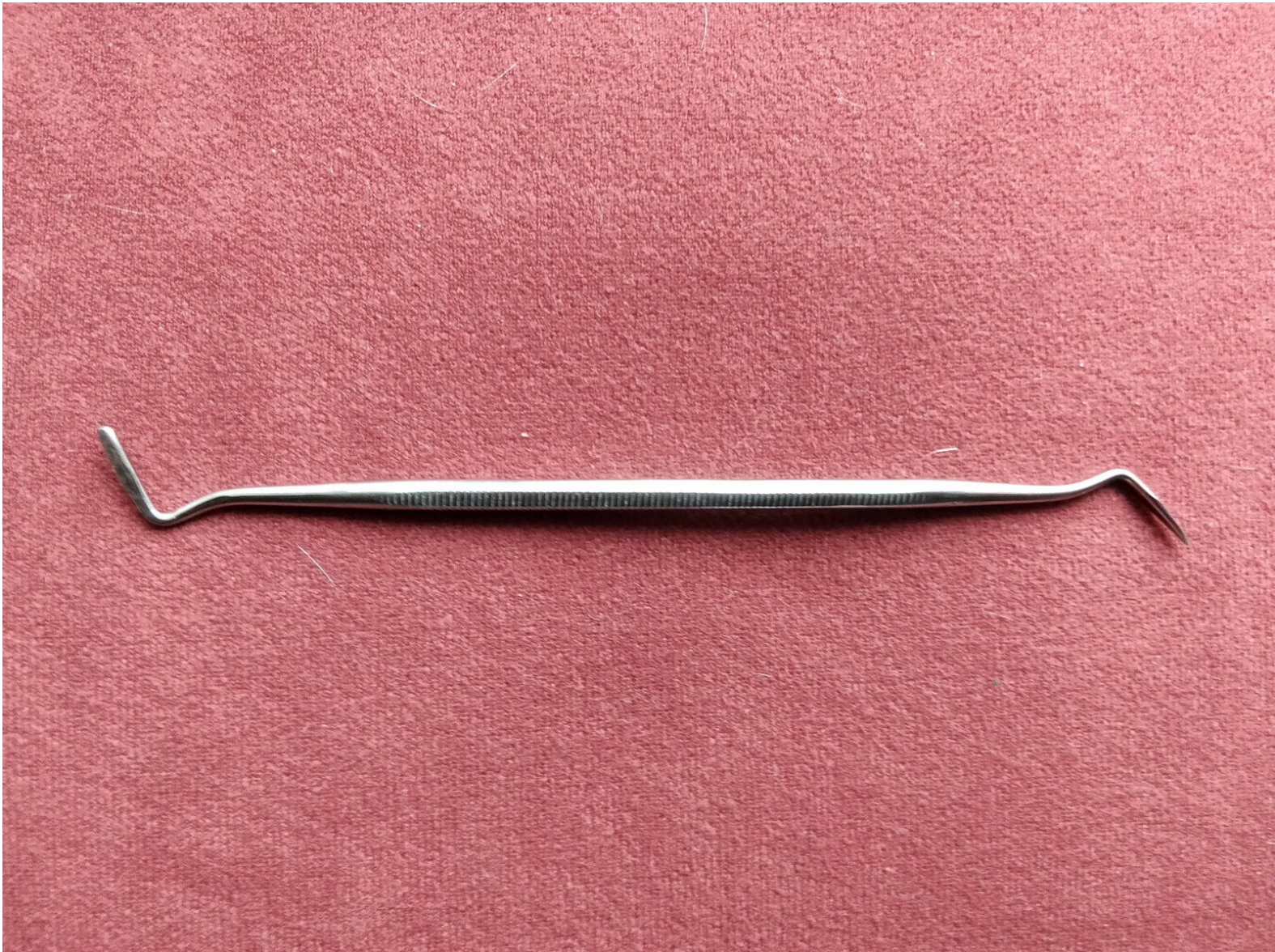




Fluke VoltAlert 1ACII Batteries clips Replacement

Needed a special tool to insert in the hole and push towards back direction

Written By: Francesco Taliercio



INTRODUCTION

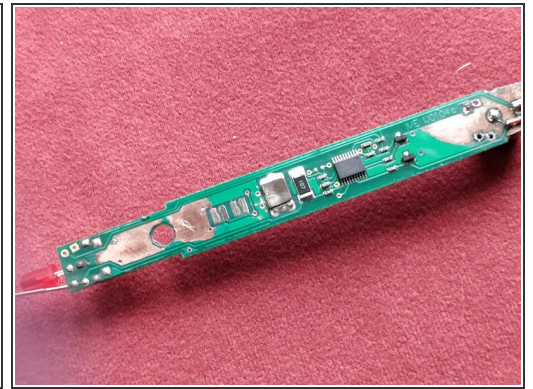
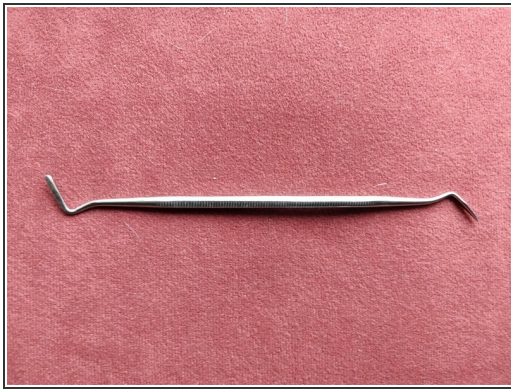
I needed a special tool to extract the circuit board. From the photos you can see the tool I needed, the hole where I inserted the tool (towards the back of the instrument) and the result of the PCB extracted, finally!!



TOOLS:

- [See the first photo](#) (1)
-

Step 1 — Batteries clips



- Insert wisdom here.

Last photo you can see the PCB finally extracted.