



FoodSaver V4980 Bottom Panel Replacement

The bottom panel is a black all-plastic sheet that is held on by several screws. This guide will walk you through removing this and replacing it if necessary.

Written By: Mackenzie Grossgold



INTRODUCTION

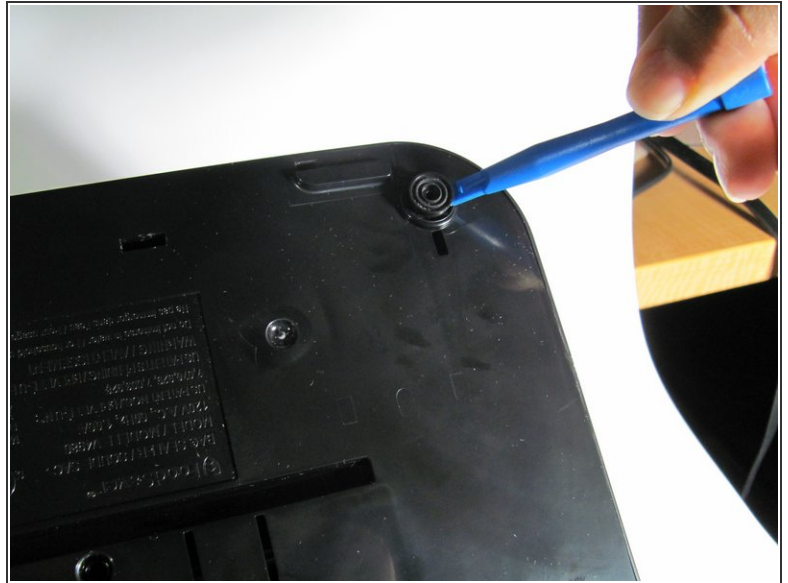
The most difficult part of this operation is finding the necessary screws that will have to be removed using a PH2 Phillips Head screw driver and spudger. In order to view the vacuum pump and/or inspect the inner workings of you appliance this bottom panel must be removed first.



TOOLS:

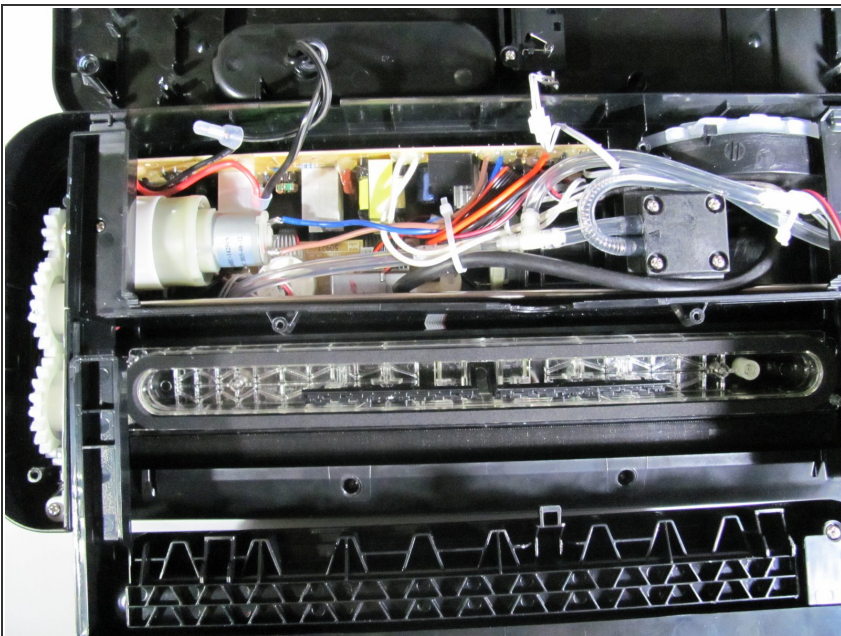
- [iFixit Opening Tools](#) (1)
 - [Phillips #2 Screwdriver](#) (1)
-

Step 1 — Bottom Panel



- Use the PH2 screwdriver to remove the three 14mm Phillips Head screws.
- Use a plastic opening tool to remove the rubber toppers, covering four more 14mm Phillips Head screws, and remove those screws with the same screwdriver.

Step 2



- You may now carefully unhinge the bottom panel.
- ⓘ The bottom panel does not completely come off. There are many wires connecting the panel to the body of the machine, so be careful not to remove any of them on accident.

To reassemble your device, follow these instructions in reverse order.