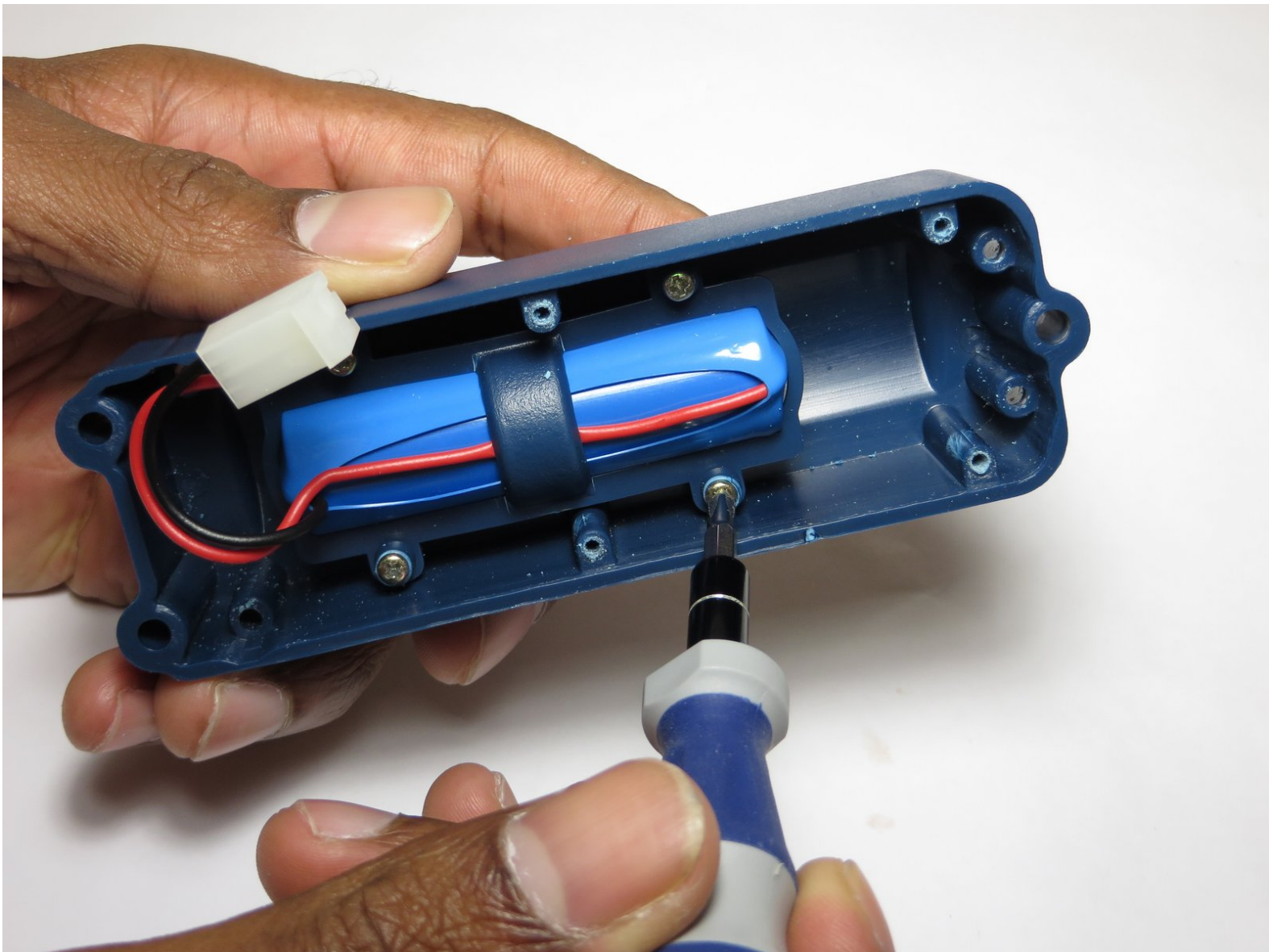




Fosera Scandle 200 Battery Replacement

This guide will show how to replace the device's battery.

Written By: Vladislav Ignatov



INTRODUCTION

After too many charging cycles, the battery's capacity will be decreased. This is true for any Lithium-ion battery. Luckily the replacement of the battery in this device is very simple.



TOOLS:

- [Phillips #0 Screwdriver](#) (1)
 - [Spudger](#) (1)
-

Step 1 — Motherboard Removal



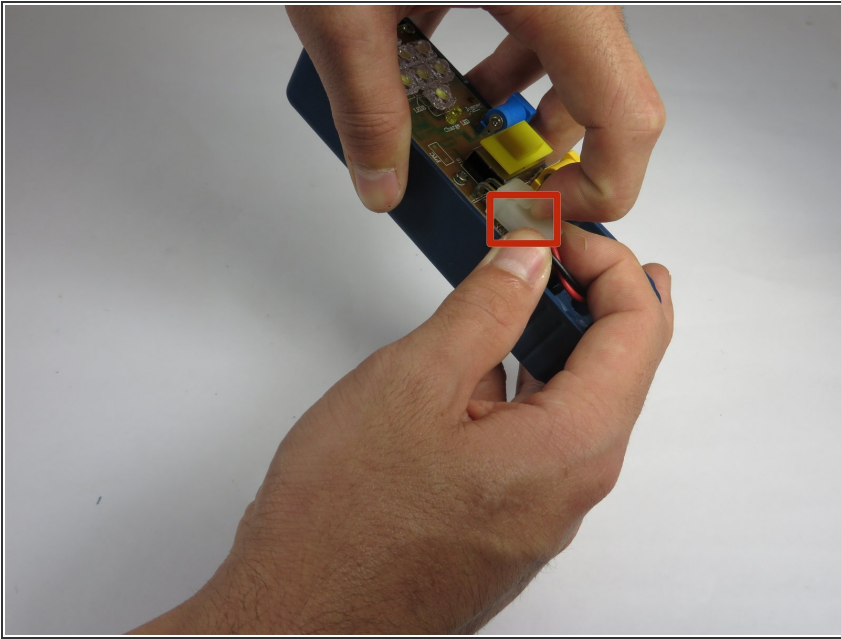
- To open up the casing, you will need to unscrew the four Phillips #0 15mm screws which are accessible from the back.

Step 2



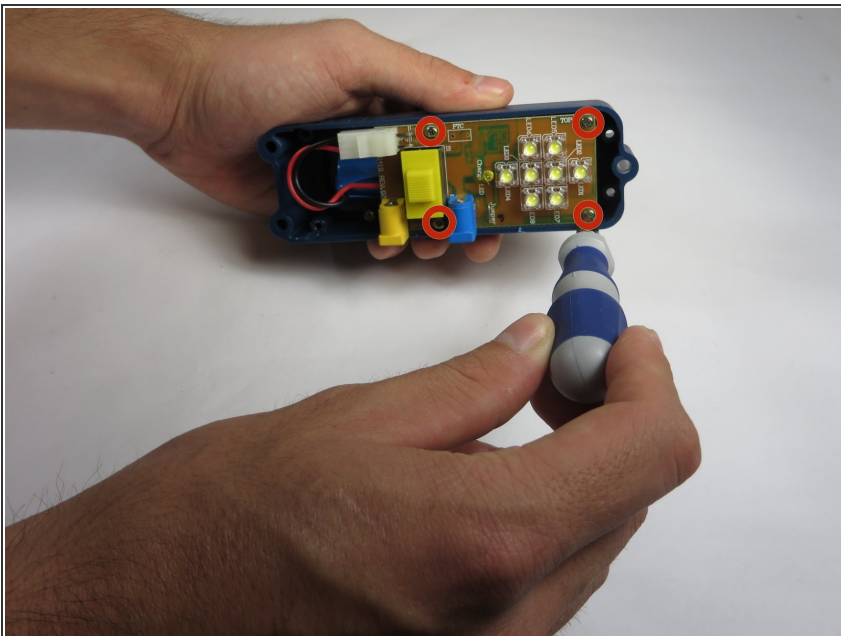
- Gently separate the two halves of the casing.

Step 3



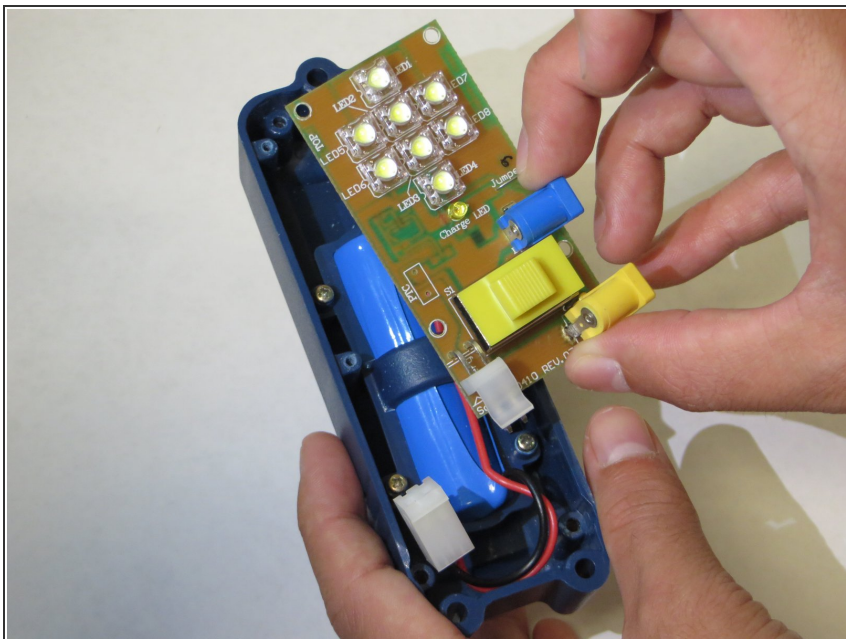
- Disconnect the battery from the motherboard by lifting up on the white plastic tab on the top of the connection.
- Gently pull the cord out by the white plastic adapter. Do not pull from the red and black cord.

Step 4



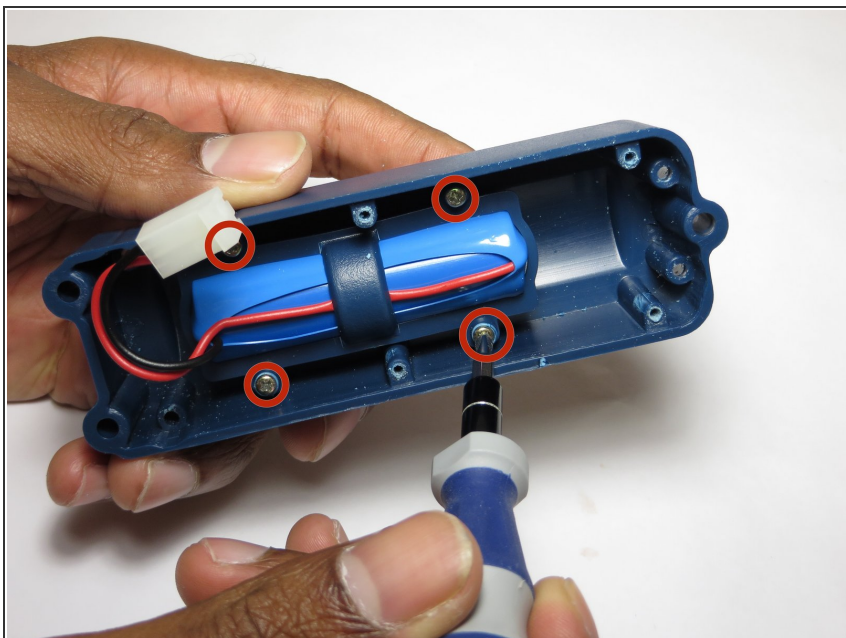
- Unscrew the Phillips four #0 15mm screws to free the motherboard from the casing.

Step 5



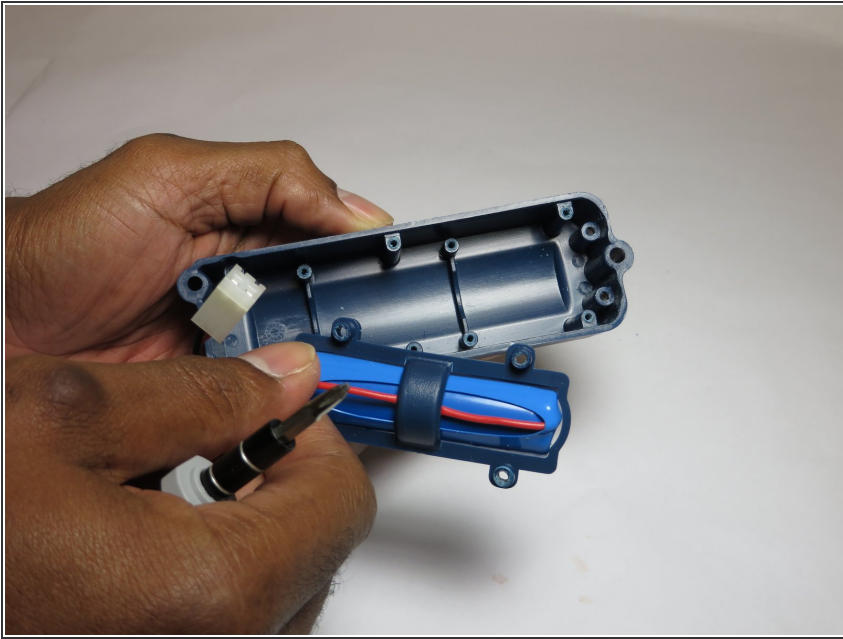
- Slowly pull the motherboard out of the casing. Make sure the loose battery wire doesn't get snagged.

Step 6 — Battery



- Remove the four #0 15mm screws to release the battery housing from the case.

Step 7



- Take the battery housing and battery out of the casing.

To reassemble your device, follow these instructions in reverse order.