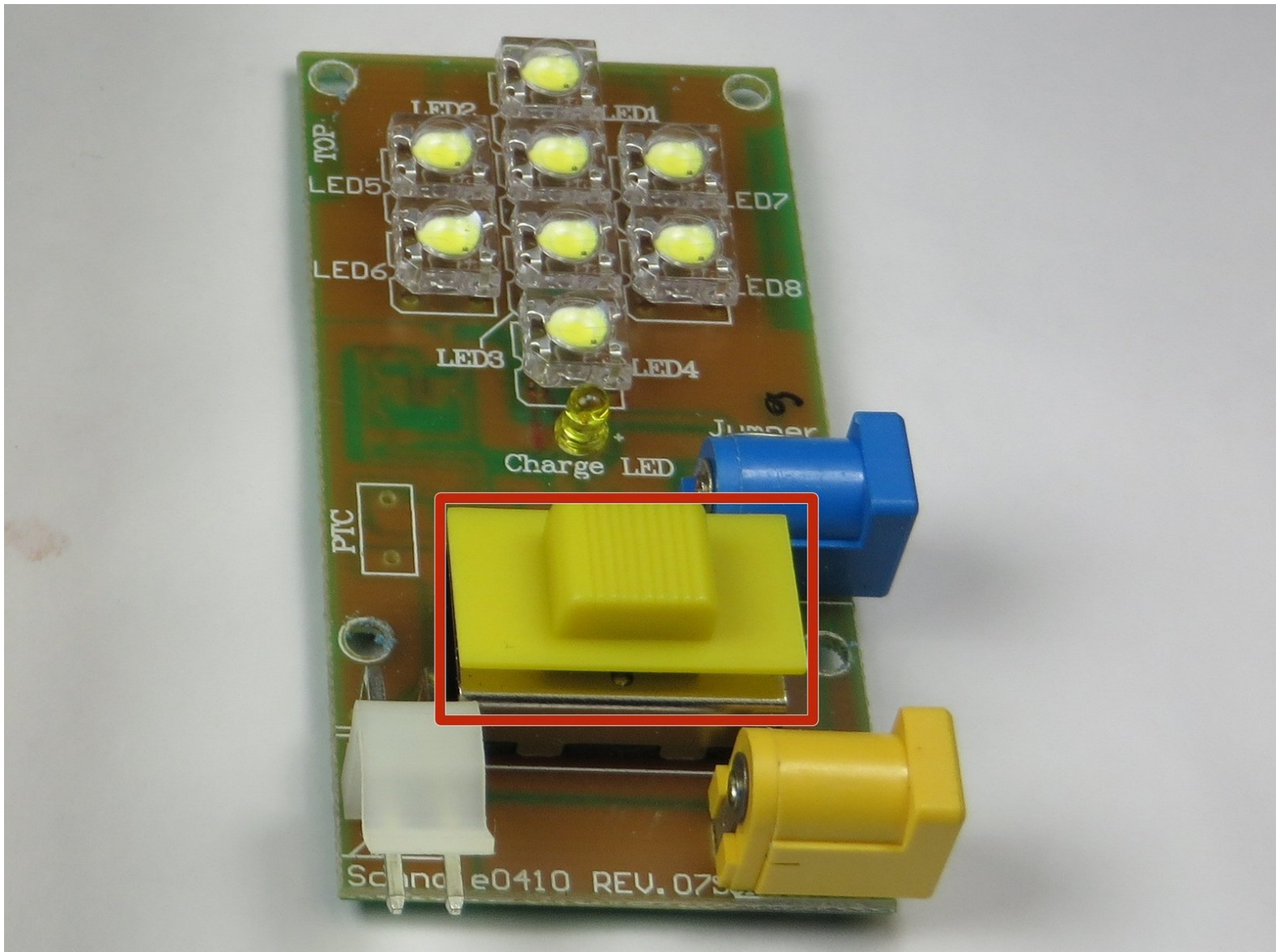




# Fosera Scandle 200 Power Switch Replacement

This guide will show how to replace a faulty power switch.

Written By: Jared



---

## INTRODUCTION

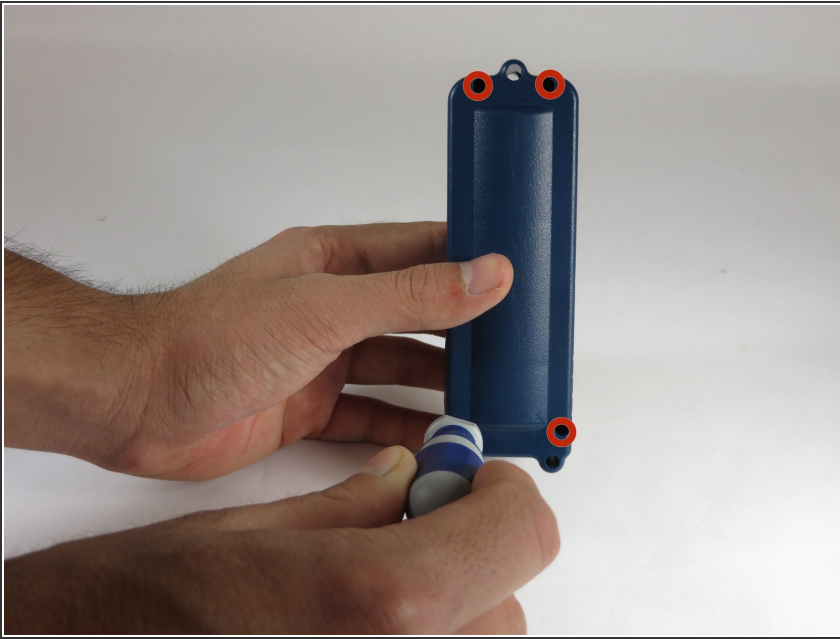
The toggle switch on the Fosera Scandle 200 has three positions for Off, Low Power, and High Power. If the switch stops working it is possible that you will not be able to turn the lantern off, or the lantern may not turn on. Either way, a bad switch will limit the usefulness of the Fosera Scandle 200, and it will need to be replaced.



### TOOLS:

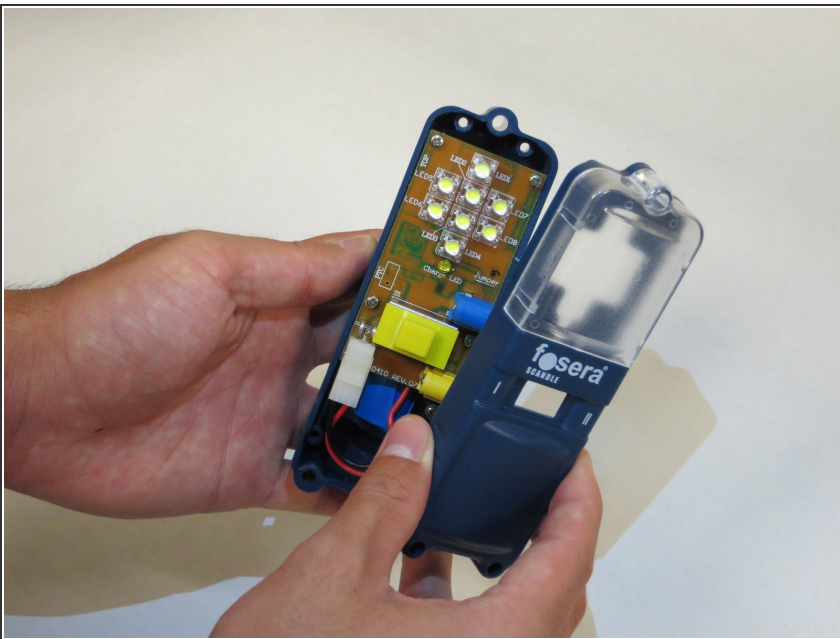
- [Phillips #0 Screwdriver](#) (1)
  - [Solder](#) (1)
  - [Spudger](#) (1)
  - [Soldering Iron](#) (1)
-

## Step 1 — Motherboard Removal



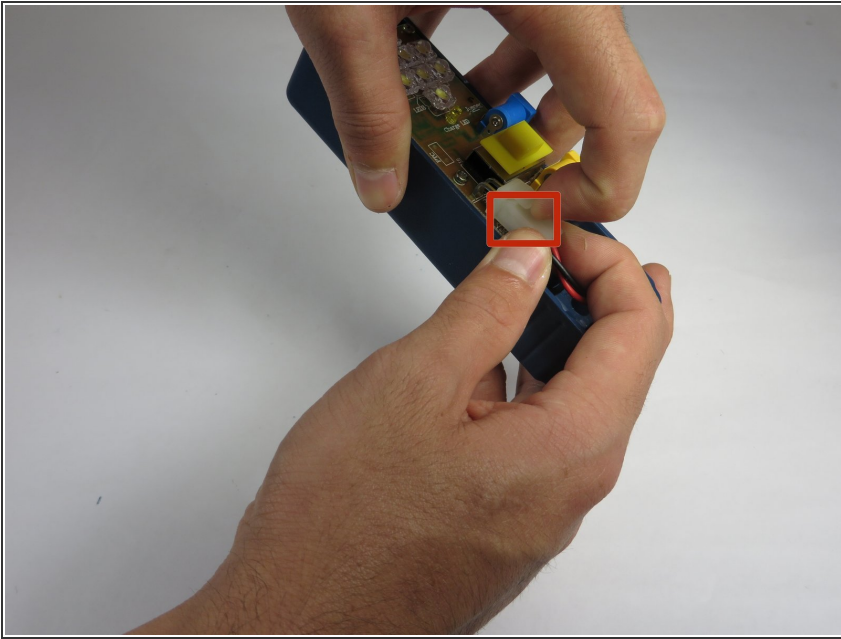
- To open up the casing, you will need to unscrew the four Phillips #0 15mm screws which are accessible from the back.

## Step 2



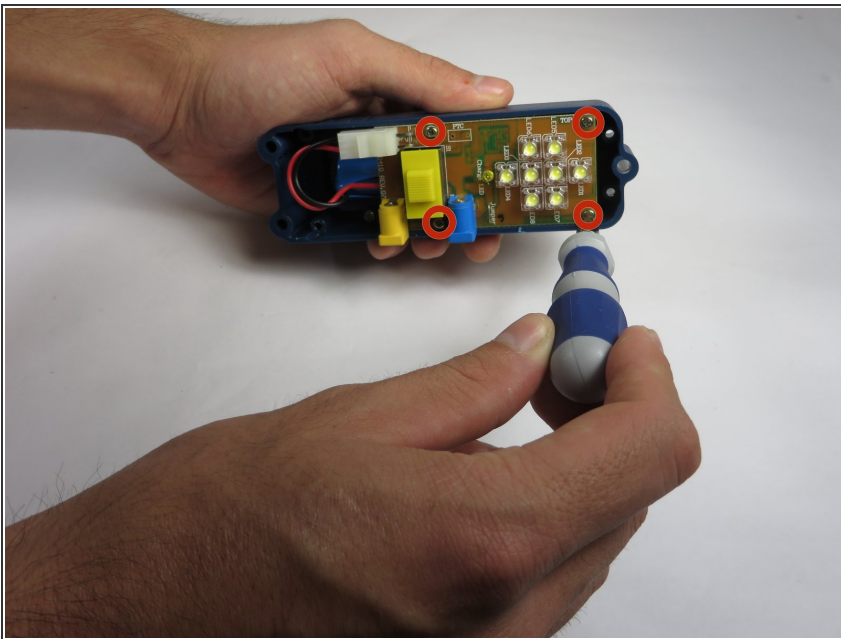
- Gently separate the two halves of the casing.

### Step 3



- Disconnect the battery from the motherboard by lifting up on the white plastic tab on the top of the connection.
- Gently pull the cord out by the white plastic adapter. Do not pull from the red and black cord.

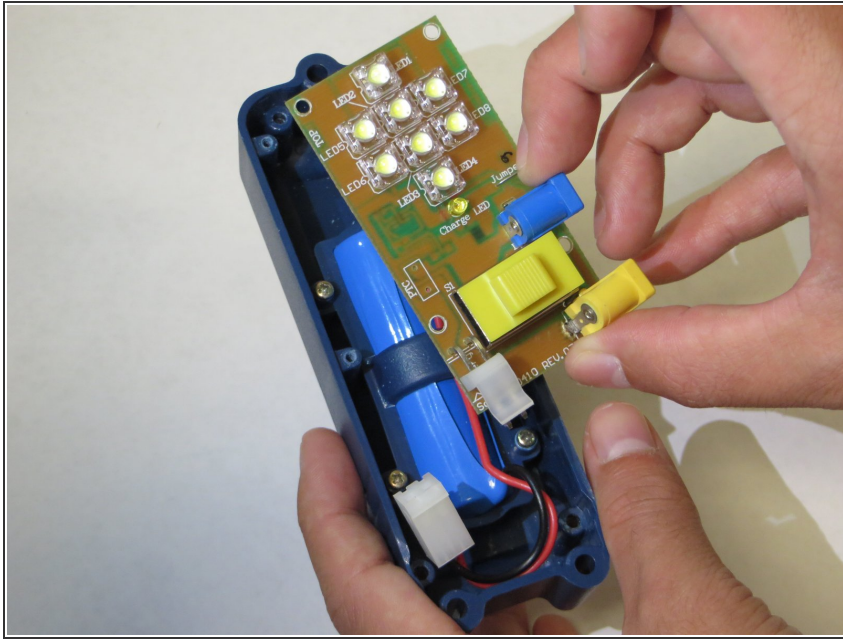
### Step 4



- Unscrew the Phillips four #0 15mm screws to free the motherboard from the casing.

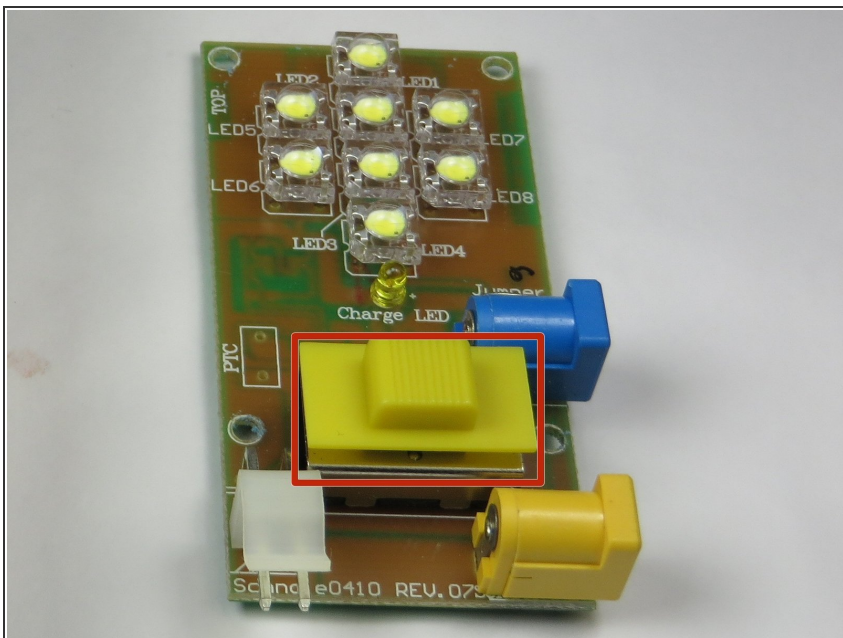


## Step 5



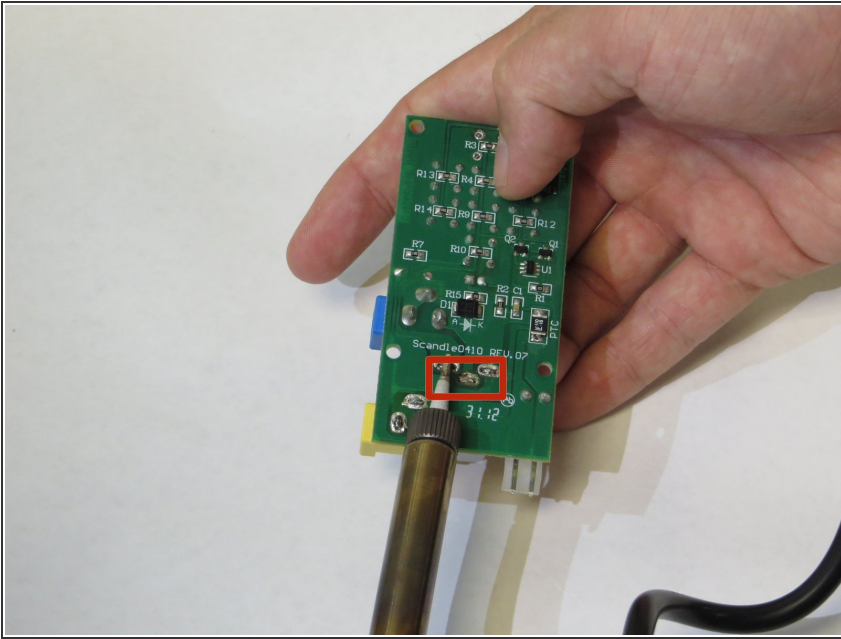
- Slowly pull the motherboard out of the casing. Make sure the loose battery wire doesn't get snagged.

## Step 6 — Power Switch



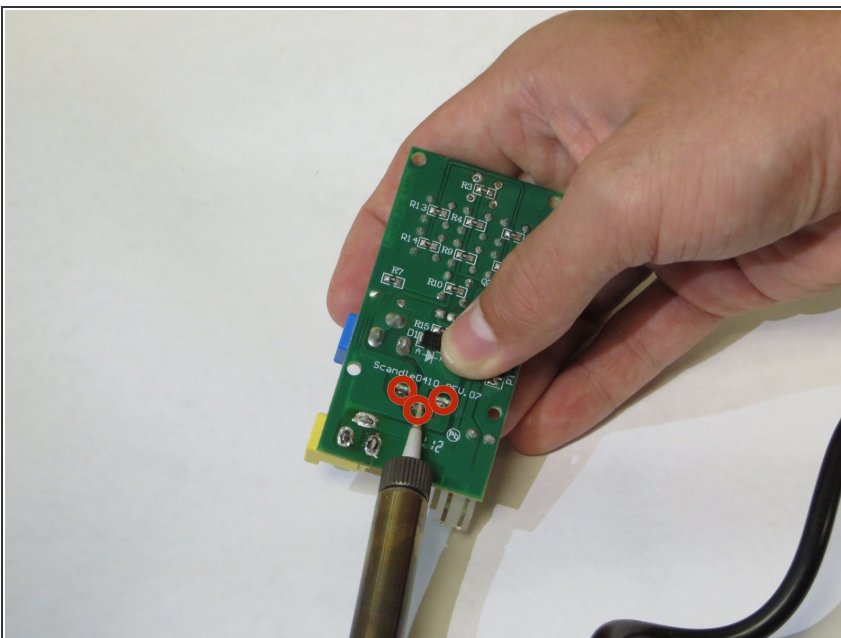
- Locate the Power Switch, and examine the area underneath the yellow plastic.
- ⓘ If you find something obstructing the movement, and you can remove it, you're done! If not, proceed with the replacement.

## Step 7



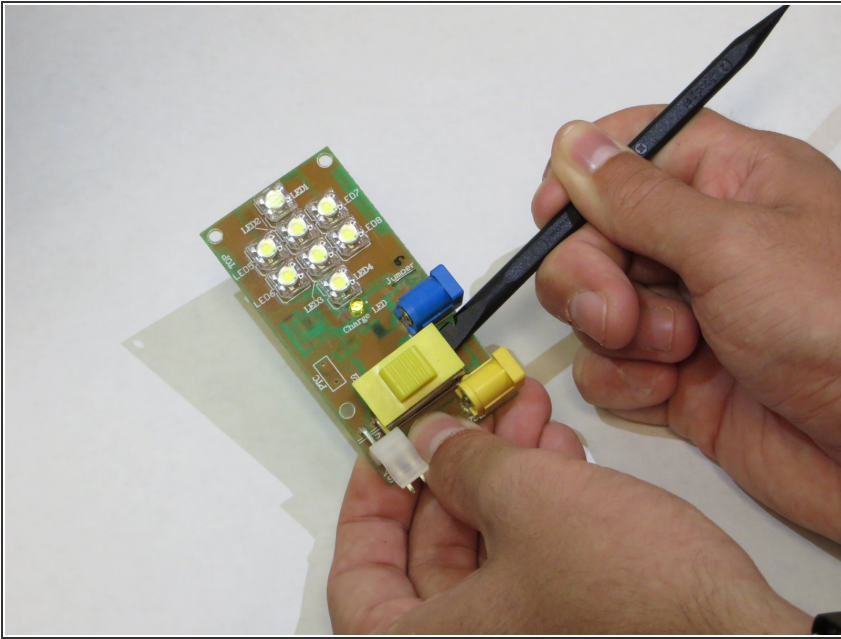
- Locate the three prong connectors for the switch on the back of the motherboard. The correct prongs will be right under the print which reads, "Scandle0410 REV.07"

## Step 8



- ⚠ The soldering iron WILL be hot! Don't touch the iron's tip or any parts which have recently been in contact with the iron.
- The solder around all three prong connectors will need to be melted individually. Push the prongs out with the soldering iron as the solder melts.

## Step 9



- Use the flat end of the spudger to pry the power switch from the motherboard. If the switch is still secured, use the pointed end of the spudger to poke the prongs out from the back.

To reassemble your device, follow these instructions in reverse order.