



Franklin MWD-460A Teardown

The Franklin MWD-460A is an electronic dictionary. It can easily be taken apart with just a few tools.

Written By: Chris L



INTRODUCTION

The Franklin MWD-460A is an electronic dictionary. It can easily be taken apart with just a few tools.



TOOLS:

- [Phillips #0 Screwdriver](#) (1)
 - [Tweezers](#) (1)
 - [iFixit Opening Tools](#) (1)
 - [Plastic Cards](#) (1)
-

Step 1 — Fully Assembled



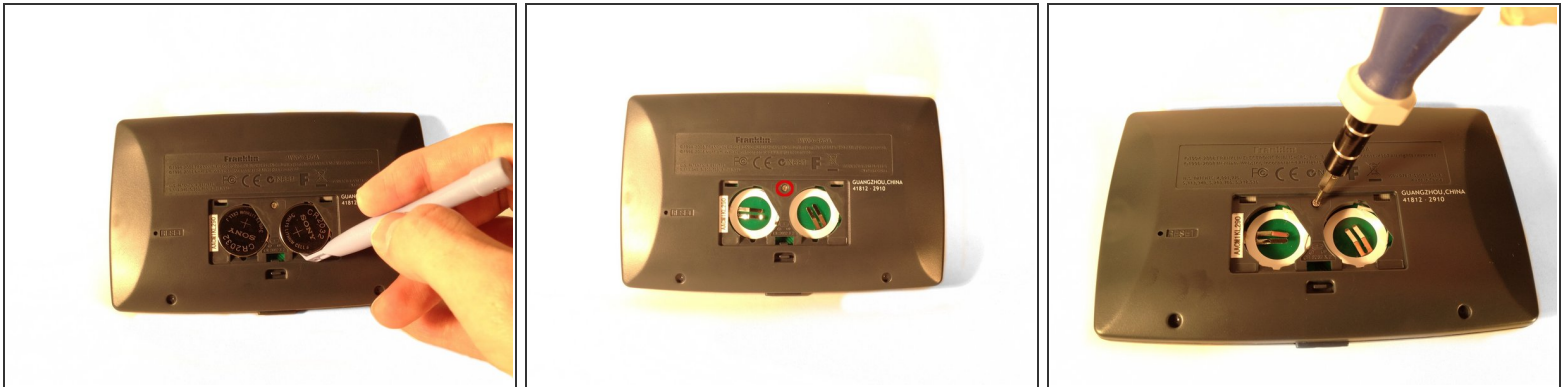
- Here is the fully assembled Franklin MWD-460A Electronic Dictionary.

Step 2 — Battery Compartment



- On the back of the case, locate the battery compartment, its cover, two grooves, and the tab (which locks the cover in place).
- Release the cover by pulling down on the tab with a fingernail.
- While holding the tab down, insert the opening tool into one of the grooves and gently pry the cover off.

Step 3 — Separating the Panels Part 1



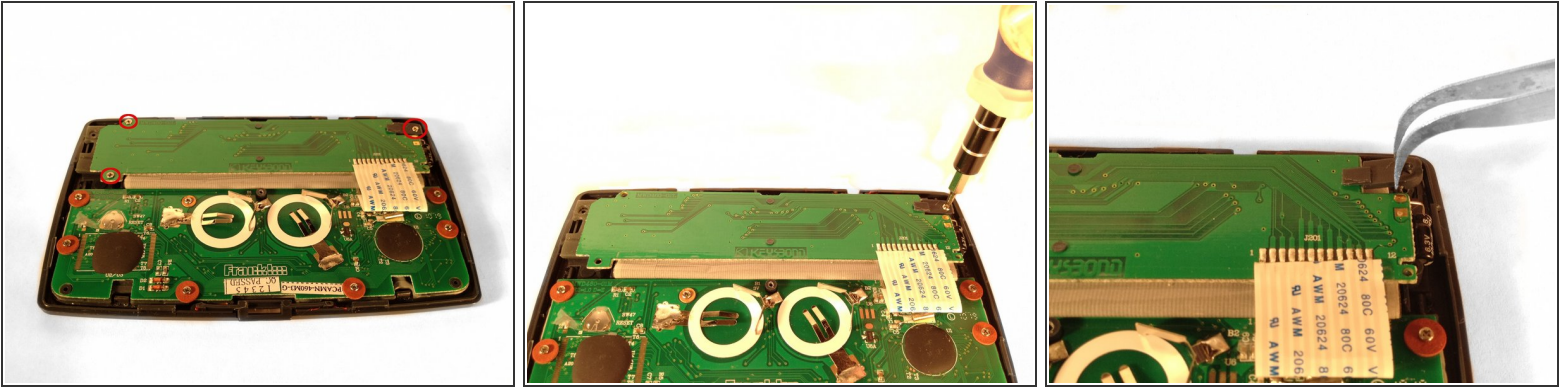
- Locate the battery grooves.
- Remove the batteries by inserting the prying tool into the grooves (sliding it underneath the batteries).
- Locate the one screw inside the battery compartment, loosen it, and remove it.

Step 4 — Separating the Panels Part 2



- Locate the six tabs holding the two panels together along the sides.
- Insert the prying tool into each of the six grooves and gently separate each tab from its insert on the other panel.
- Finally, separate the panels from one another.

Step 5 — Circuit Boards and Keypads Part 1



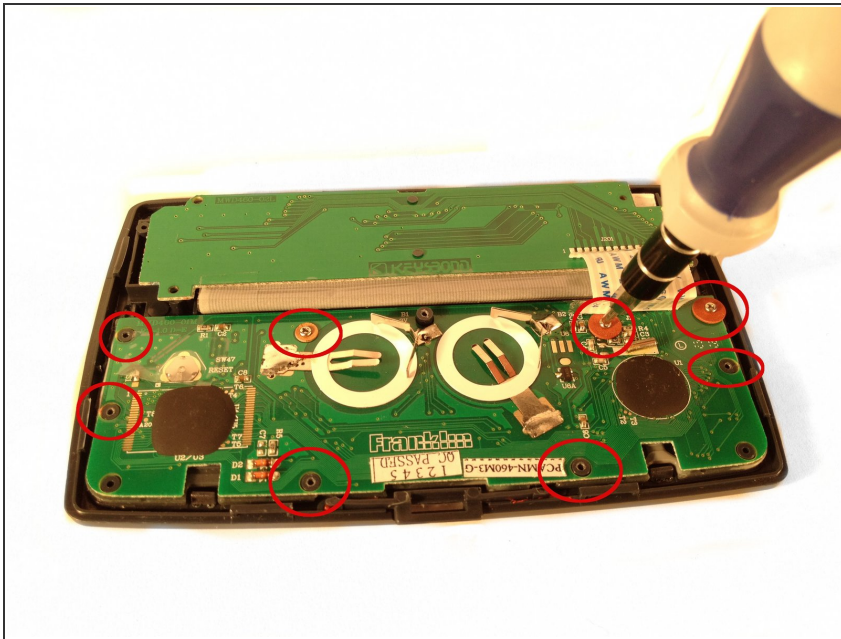
- Locate the three screws holding the upper circuit board in place.
- Loosen and remove the three screws.
- ⓘ The screw in the top right corner is also holding a tab in place so remember where it goes.

Step 6 — Circuit Boards and Keypads Part 1 Continued



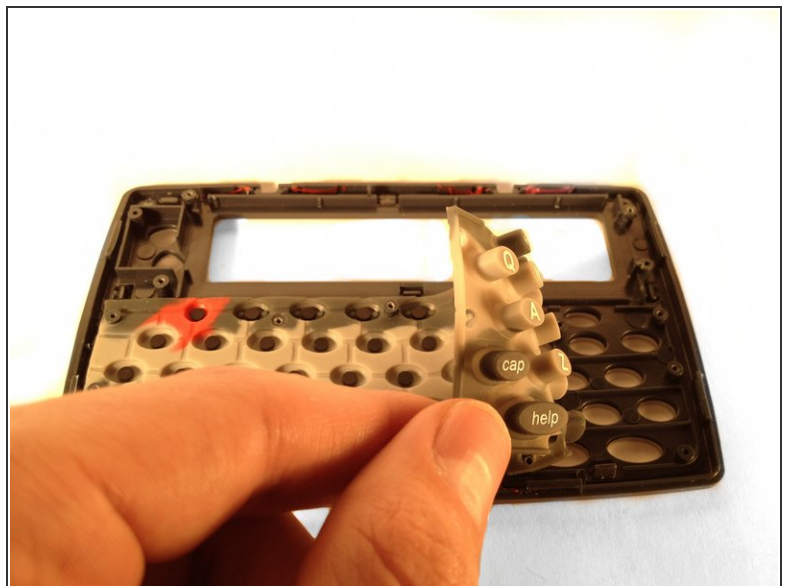
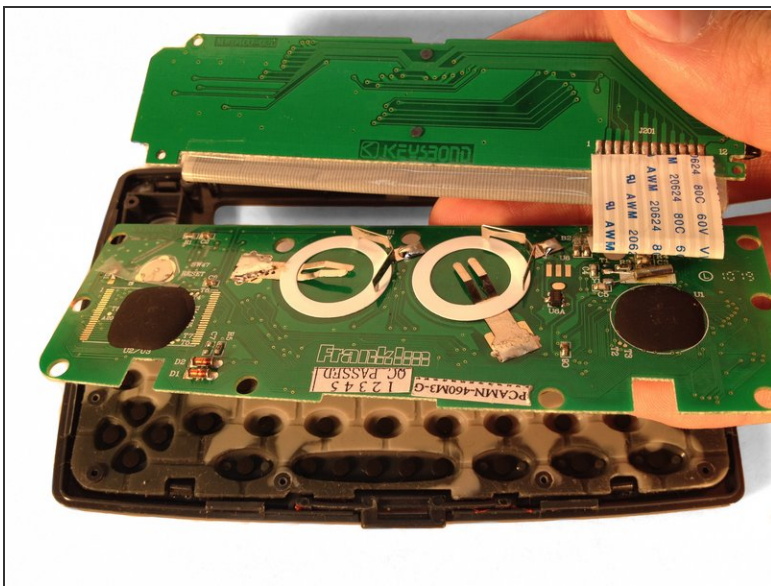
- Gently lift the upper circuit board to locate the up/down keypad and remove it.
- ⚠ Be careful when moving the upper circuit board as it's attached to the LCD screen and the lower circuit board.

Step 7 — Circuit Boards and Keypads Part 2



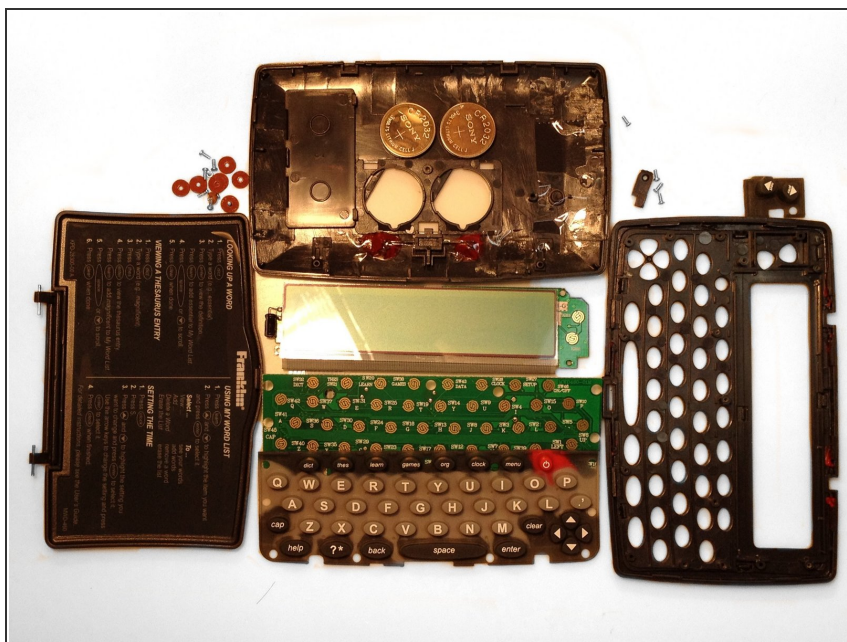
- Locate the eight screws holding the lower circuit board in place.
- ⓘ Gently pull up on the tape to expose the eighth screw.
- Loosen and remove the eight screws along with their washers.

Step 8 — Circuit Boards and Keypads Part 3



- Gently lift the two circuit boards (along with the attached LCD screen) away from their case.
- Now peel the lower keypad from its case.

Step 9 — Full View of Disassembly



- Here is a full view of the disassembled Franklin MWD-460A Electronic Dictionary.