



Front and Back Panel Disassembly

In order to get to the "guts" of the paper shredder, the front and back panel needs to be removed first.

Written By: Natalie Meert



INTRODUCTION




To replace anything in the paper shredder, the front and back panel needs to be removed to access the shredding component. Screws will be removed and the panels will be easily taken off.

TOOLS:

- [Phillips #1 Screwdriver](#) (1)
-

Step 1 — Front and Back Panel Disassembly



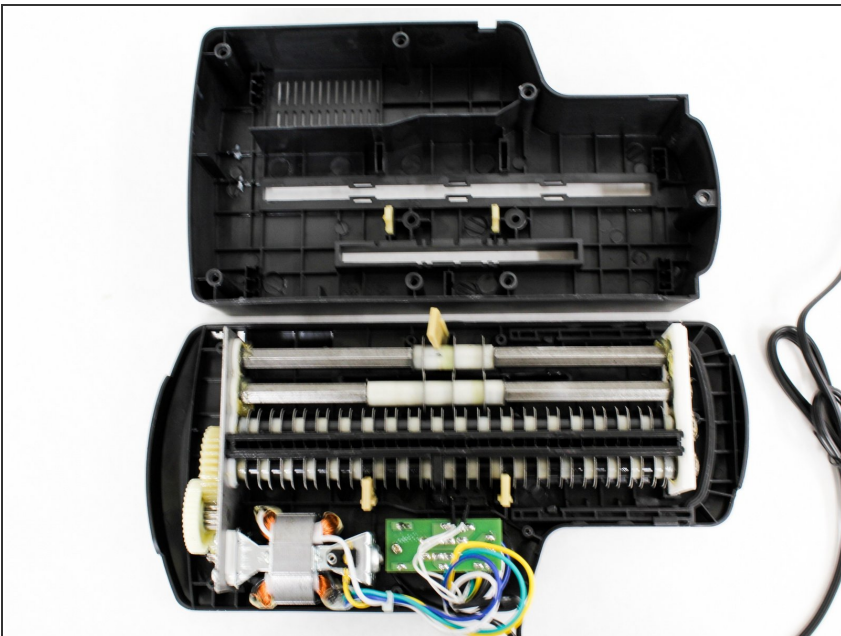
-  The unit head needs to be switched to the off position and unplugged before any disassembly.
-  When removing screws in the following steps, make sure the unit is resting on a flat surface because pieces will easily come apart.
-  Remove seven 11 mm Phillips #1 screws from the underside of the head unit.

Step 2



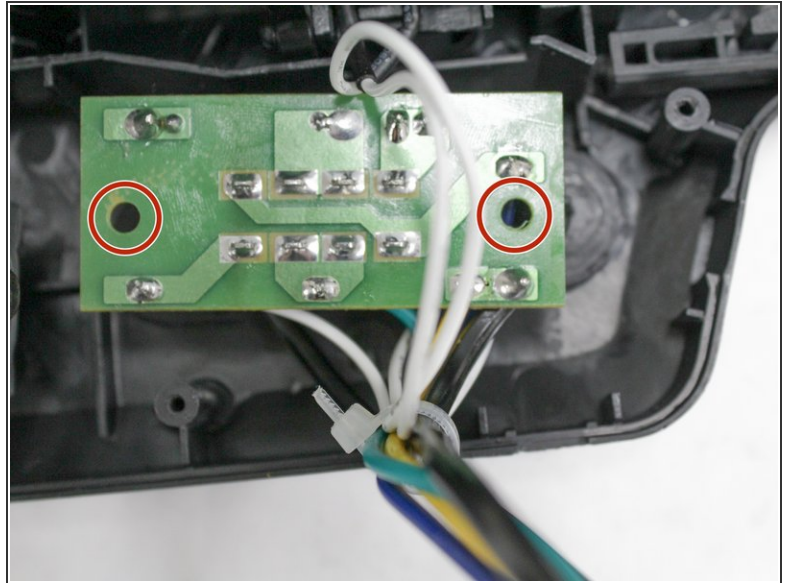
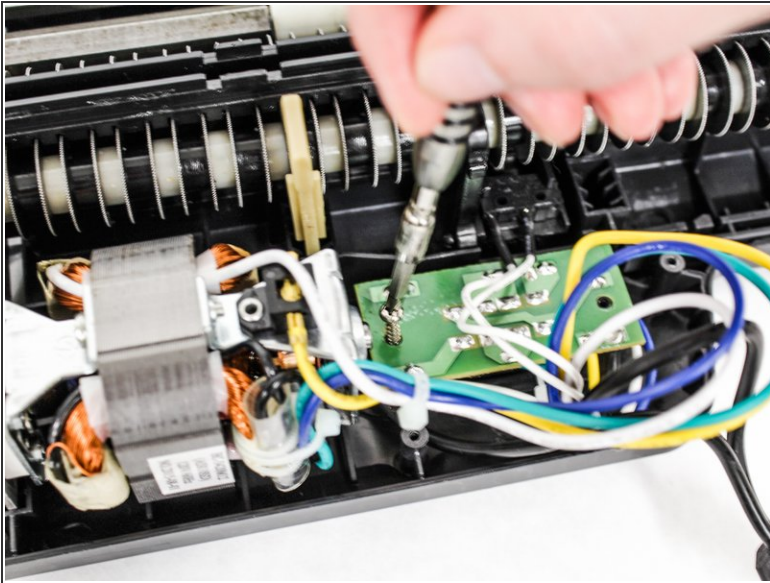
- ☞ Upon removal of the next screws, the front panel and the shredding component attached to it will fall apart from the back panel so have the unit resting on a flat surface.
- Remove two 50 mm Phillips #1 screws from the middle of the underside of the head unit.

Step 3



- Lay the back panel away from the front panel on a flat surface.
- ⓘ The back panel will be light because it is only the plastic, while the front panel will be heavy with the shredding component attached to it.

Step 4



- Find the green control board that is located next to the shredding motor.
- Remove two 11 mm Phillips #1 screws located on opposite sides of the control board.
- ⓘ You may need to move wires over to find the screws.

To reassemble your device, follow these instructions in reverse order.