



# Fugoo Style XL Midwoofer Replacement

This guide will demonstrate how to remove and replace the midwoofers within the Fugoo Style XL

Written By: James Gifford



# INTRODUCTION

The Fugoo Style XL has two midwoofers connected to the casing that can be removed and replaced.



## TOOLS:

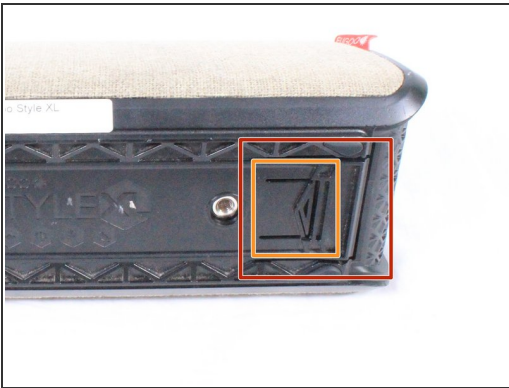
- [Tweezers](#) (1)
  - [T9 Torx Screwdriver](#) (1)
  - [64 Bit Driver Kit](#) (1)
-

## Step 1 — Fabric Case



- Using your hand, unscrew the large screws underneath the speaker.

## Step 2



- Using your hand, gently lift the large plastic tab secured to the rubber holding (the holding is within the orange square). While lifting the tab, push the speaker out of the case.
- ⚠ Ensure the tab is lifted only slightly above the rubber holding. Bending the plastic tab too far could result in damage to the case.

### Step 3



- Slide the speaker completely out of the fabric casing.

### Step 4 — Midwoofer



- There are 8 screws (4 on each side) holding covers that conceal the bass speakers. Remove these 3mm screws using a #2.0 Hex screwdriver.



## Step 5



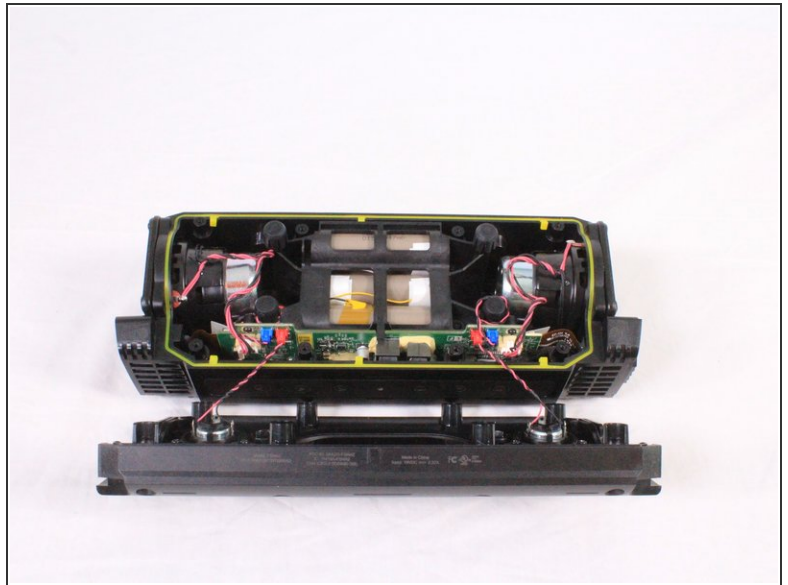
- Using your hand, pull the covers away from the speaker.

## Step 6




- Using a #2.0 Hex screwdriver to unscrew the 8 12mm screws depicted.

## Step 7

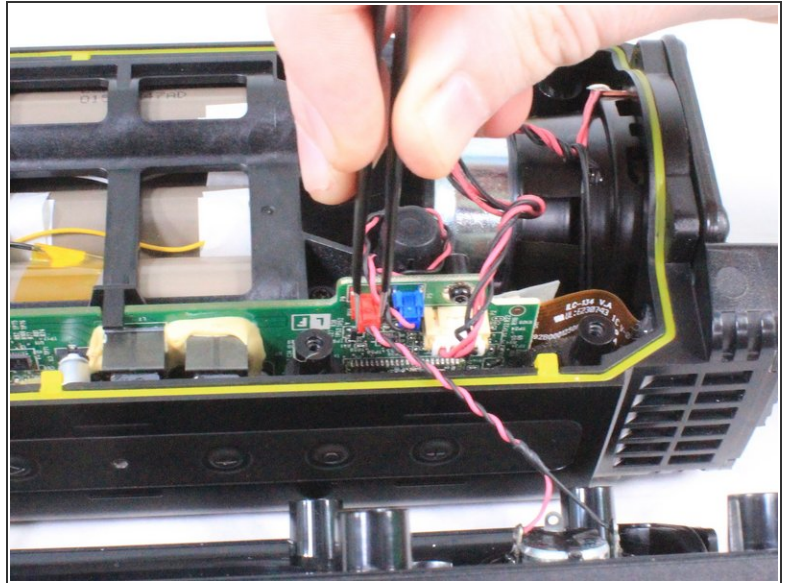
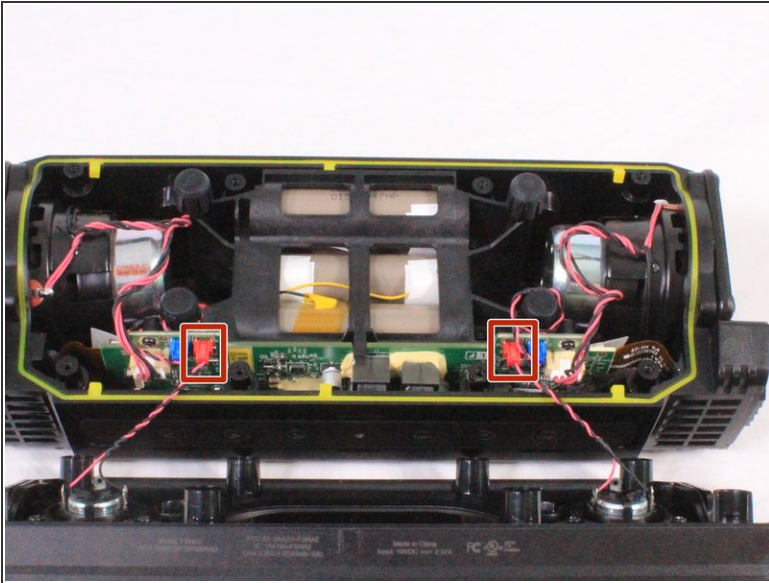


- Gently pull apart the front casing from the back casing.

 Speakers on the front casing have wires directly connected to the motherboard. Pulling off the casing with force will result in damage.

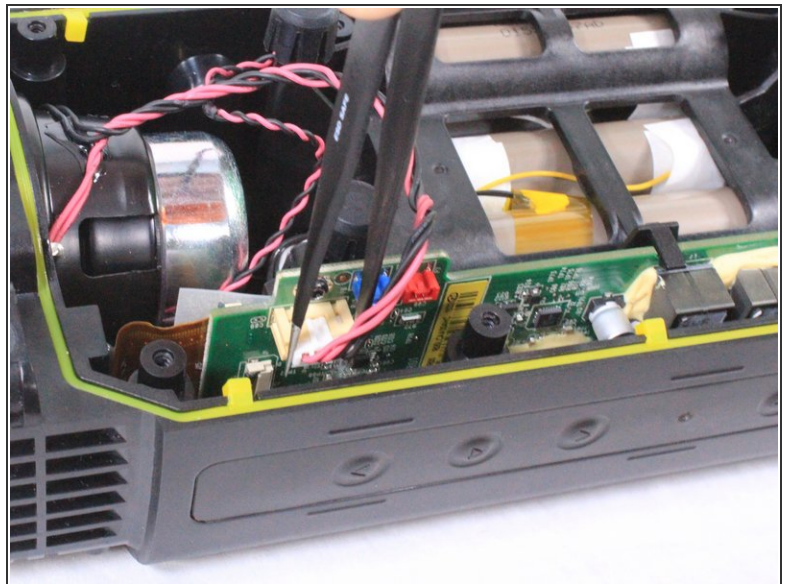
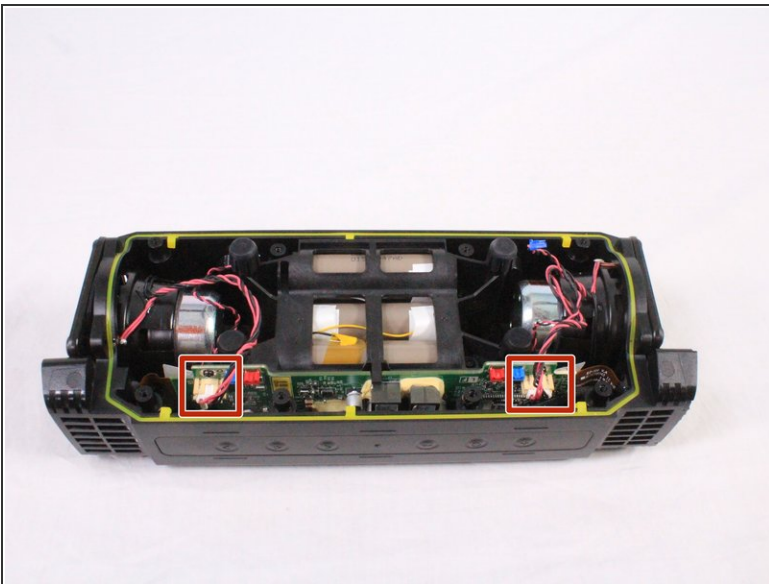


## Step 8



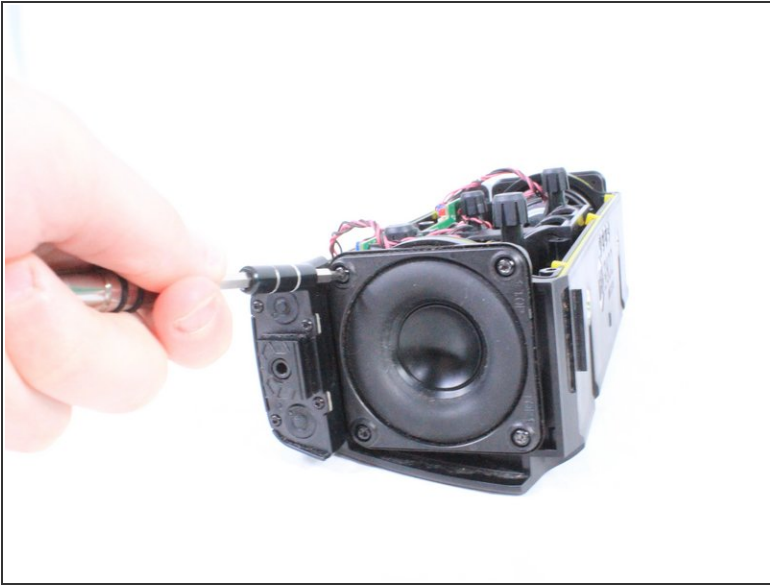
- Using a pair of tweezers or your hand, carefully remove the red bundled cable connectors from the motherboard.
- When the red bundled cable connectors are disconnected, set the outer casing aside.

## Step 9



- Carefully untangle and remove the white bundled cable connectors from the motherboard.

## Step 10



- Using a T9 screwdriver, remove the 8 screws (4 on each speaker) surrounding the midwoofers.
- Using your hand, carefully remove the midwoofers.

To reassemble your device, follow these instructions in reverse order.