



# Fugoo Style XL Motherboard Replacement

This guide will demonstrate how to remove the motherboard from the Fugoo Style XL.

Written By: James Gifford



# INTRODUCTION

Use this guide to remove and replace the motherboard within a Fugoo Style XL.



## TOOLS:

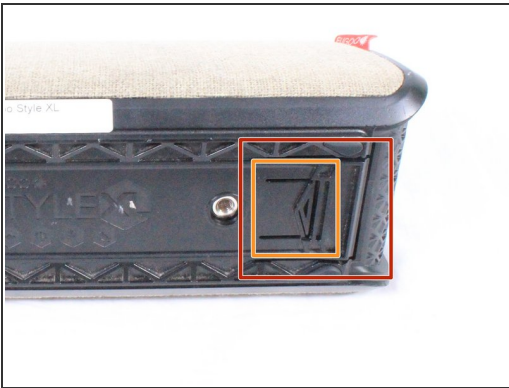
- [T9 Torx Screwdriver](#) (1)
  - [Tweezers](#) (1)
  - [iFixit Opening Tools](#) (1)
  - [64 Bit Driver Kit](#) (1)
-

## Step 1 — Fabric Case



- Using your hand, unscrew the large screws underneath the speaker.

## Step 2



- Using your hand, gently lift the large plastic tab secured to the rubber holding (the holding is within the orange square). While lifting the tab, push the speaker out of the case.
- ⚠ Ensure the tab is lifted only slightly above the rubber holding. Bending the plastic tab too far could result in damage to the case.



### Step 3



- Slide the speaker completely out of the fabric casing.

### Step 4 — Motherboard



- There are 8 screws (4 on each side) holding covers that conceal the bass speakers. Remove these 3mm screws using a #2.0 Hex screwdriver.

## Step 5



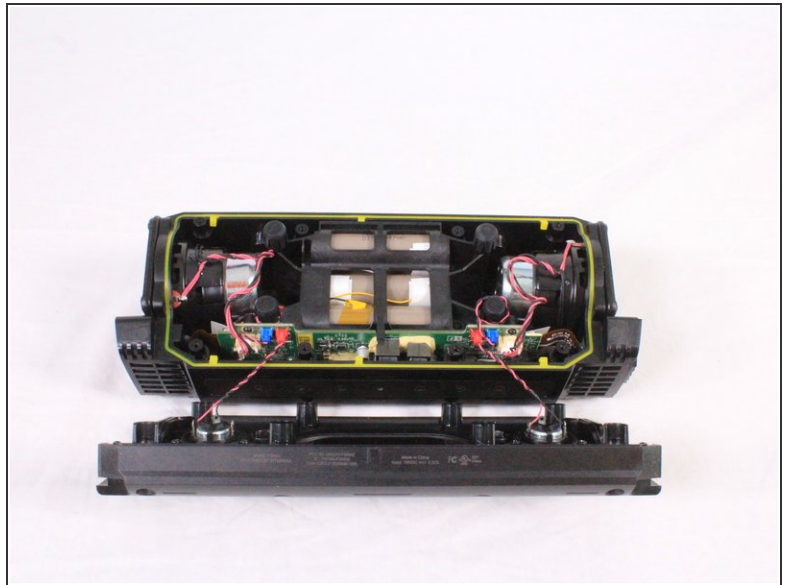
- Using your hand, pull the covers away from the speaker.

## Step 6




- Using a #2.0 Hex screwdriver to unscrew the 8 12mm screws depicted.

## Step 7

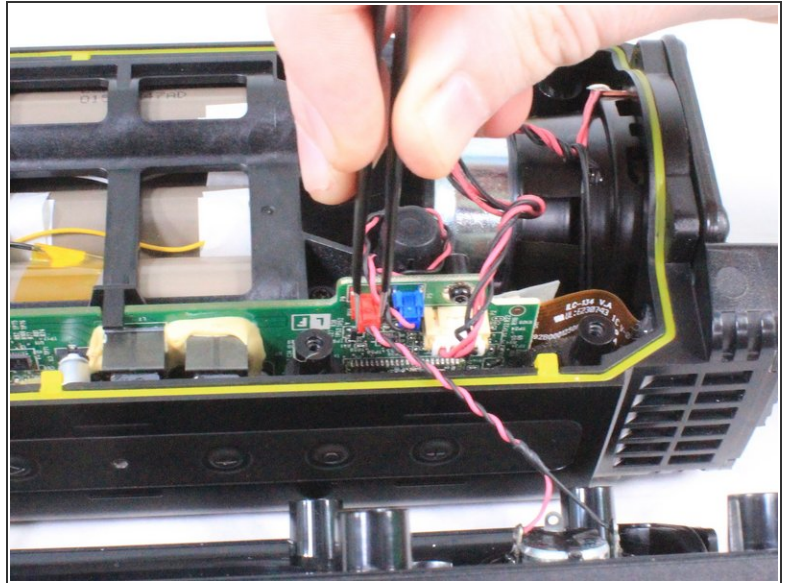
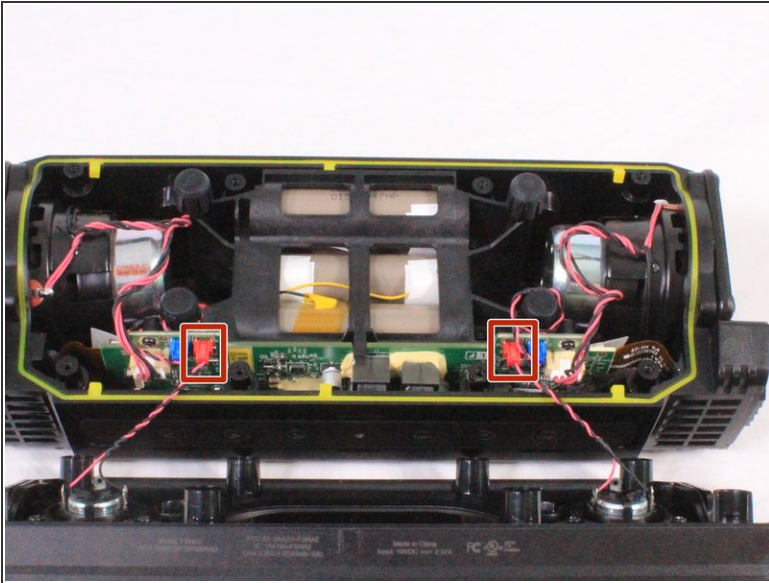


- Gently pull apart the front casing from the back casing.

 Speakers on the front casing have wires directly connected to the motherboard. Pulling off the casing with force will result in damage.

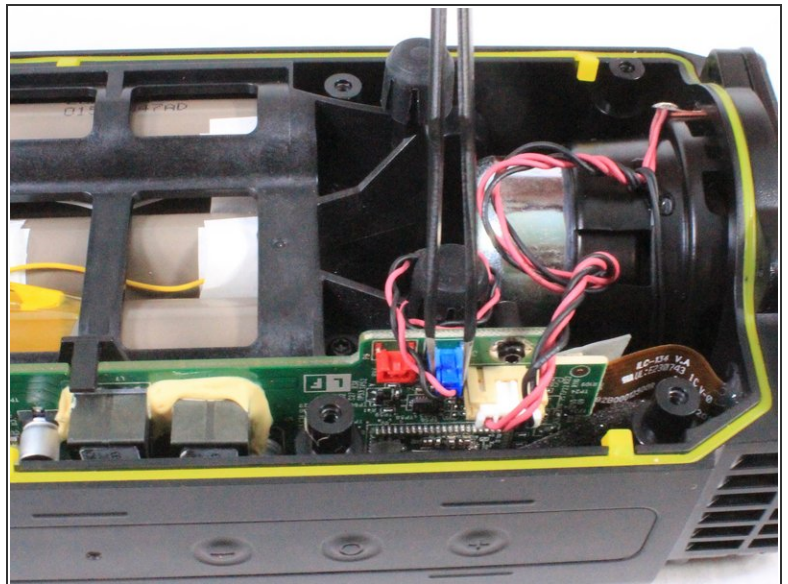
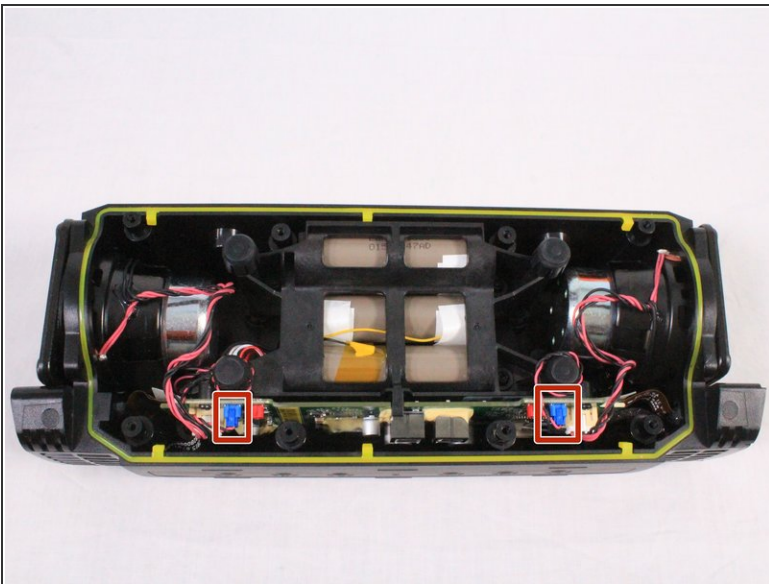


## Step 8



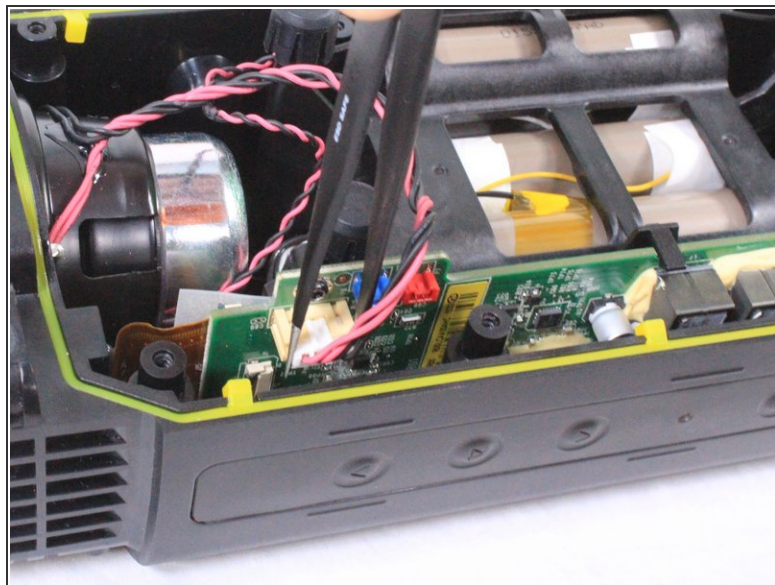
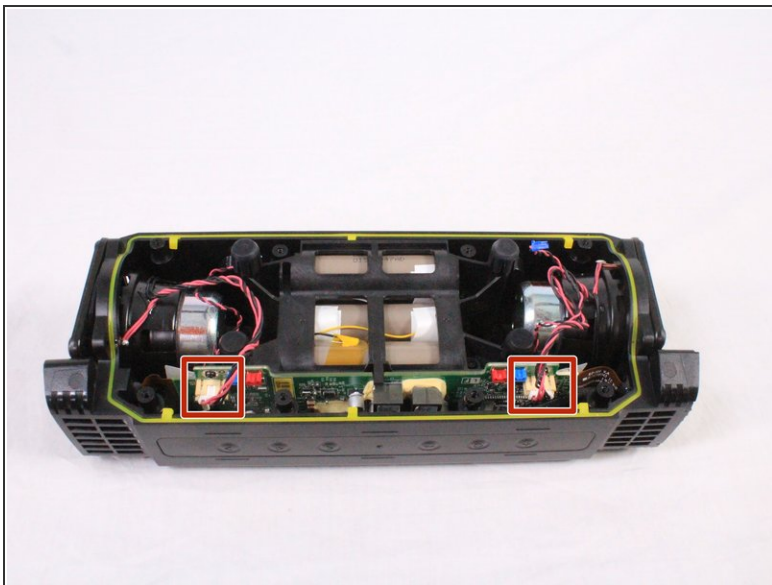
- Using a pair of tweezers or your hand, carefully remove the red bundled cable connectors from the motherboard.
- When the red bundled cable connectors are disconnected, set the outer casing aside.

## Step 9



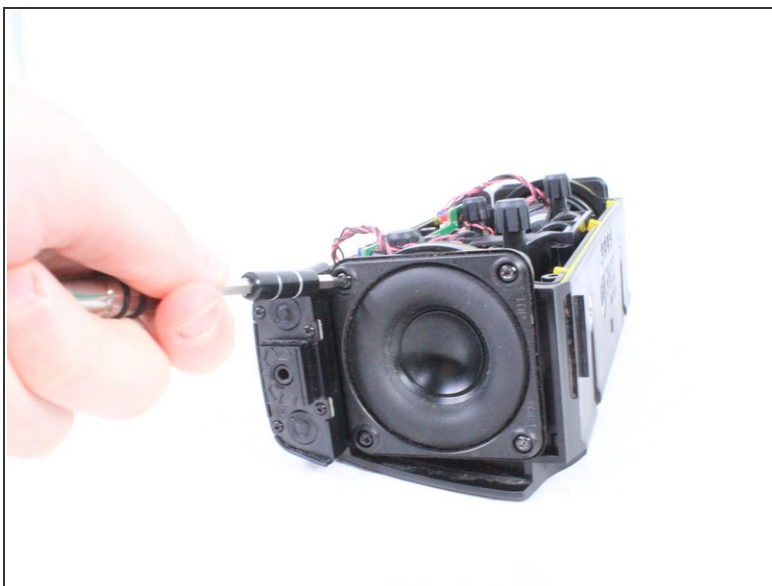
- Untangle any wrapped blue bundled cable connectors and gently remove them from the motherboard using a pair of tweezers.

## Step 10



- Carefully untangle and remove the white bundled cable connectors from the motherboard.

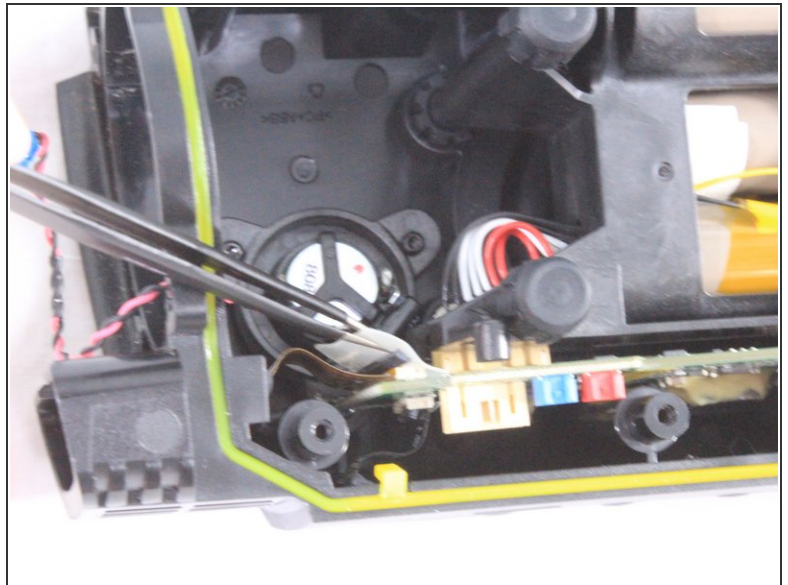
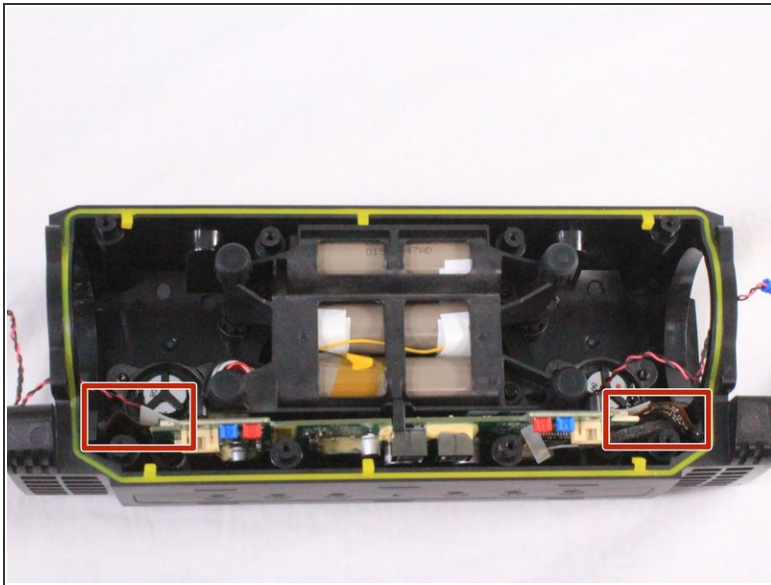
## Step 11



- Using a T9 screwdriver, remove the 8 screws (4 on each speaker) surrounding the midwoofers.
- Using your hand, carefully remove the midwoofers.

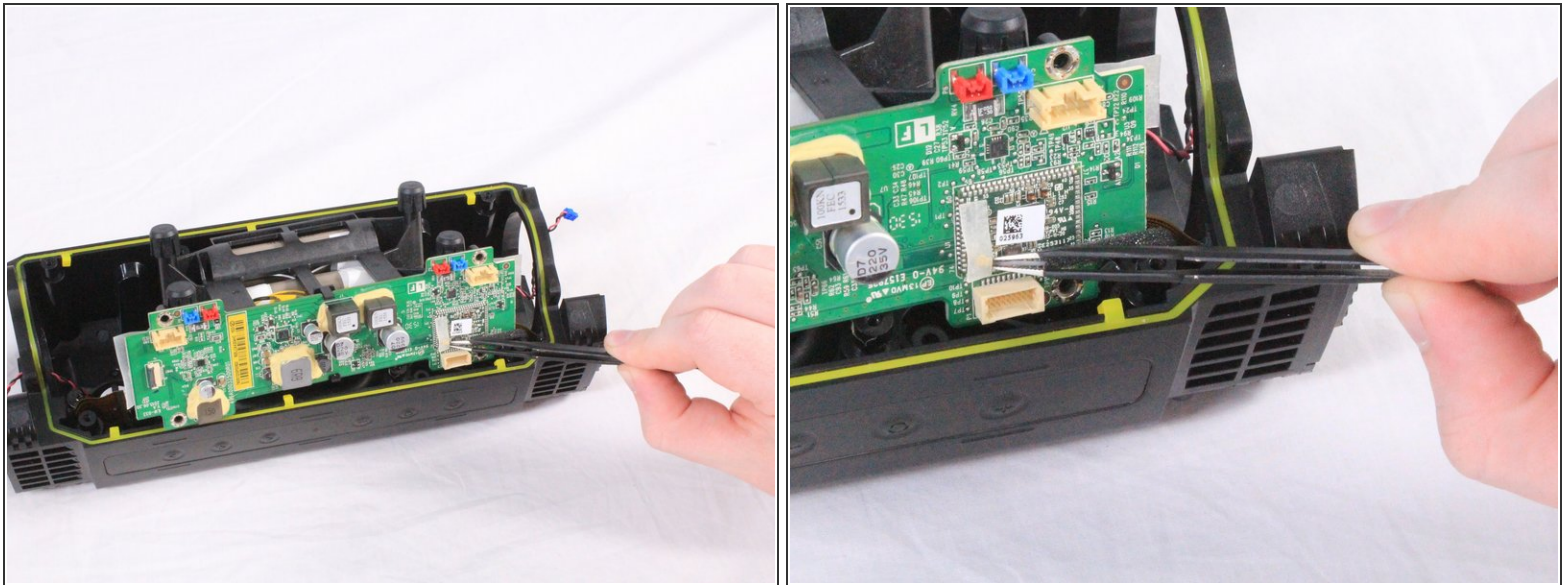


## Step 12



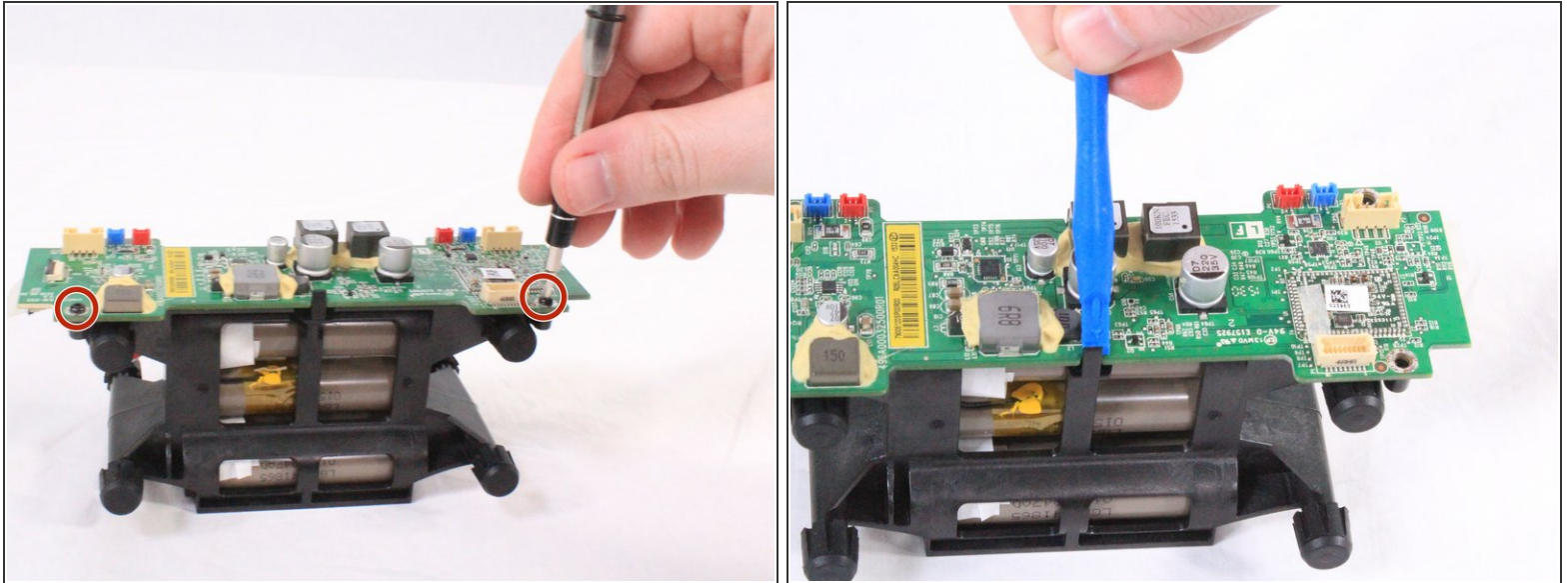
- Using a pair of tweezers, lift the padded holding that is securing the ZIF connector to the motherboard. The connector will release from the motherboard once the padding is lifted.
- ⚠ Do not pull on the cables themselves. Doing so can damage the cables. Always remove the ZIF connector by gently lifting the padding securing them to the motherboard.

## Step 13



- The motherboard is connected to the battery directly. Carefully lift the battery and motherboard unit halfway out of the casing.
- ⚠ There is a small coaxial cable connected underneath the motherboard. Using a pair of tweezers, carefully disconnect and remove the cable from under the adhesive tape.
- When the cable is disconnected, fully remove the motherboard and battery unit.

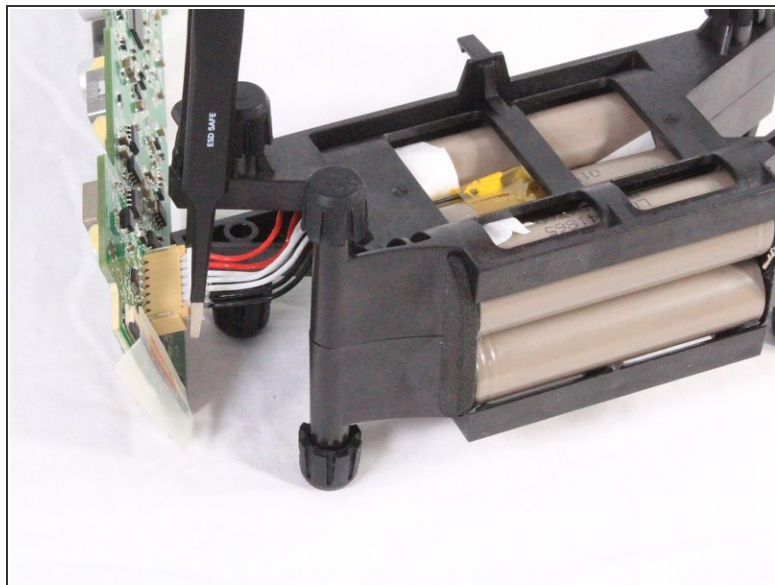
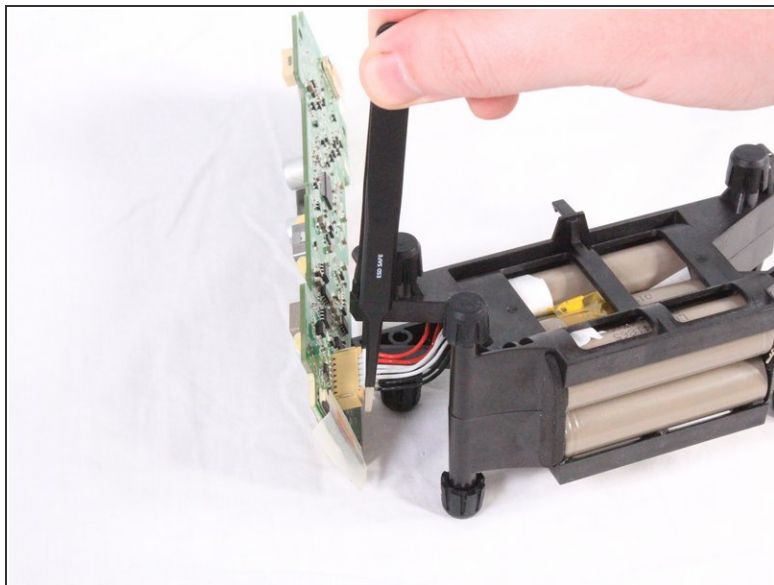
## Step 14



- There are 4 screws (2 on each side) connecting the motherboard to the battery unit. Remove the 3mm screws using a #2.0 Hex screwdriver.
  - When the screws are removed, use an iFixit opening tool to remove the motherboard from the two clamps securing it to the battery pack.
- ⚠ Beware! The motherboard is not fully disconnected from the battery even when removed from the clamps.



## Step 15



- Using tweezers or your hand, carefully disconnect the bundled cables connecting the battery to the motherboard.

To reassemble your device, follow these instructions in reverse order.