



# Fugoo Tough Charging Port Replacement

This guide shows the user how to remove and replace a faulty charging port.

Written By: Alicia Edwards





## TOOLS:

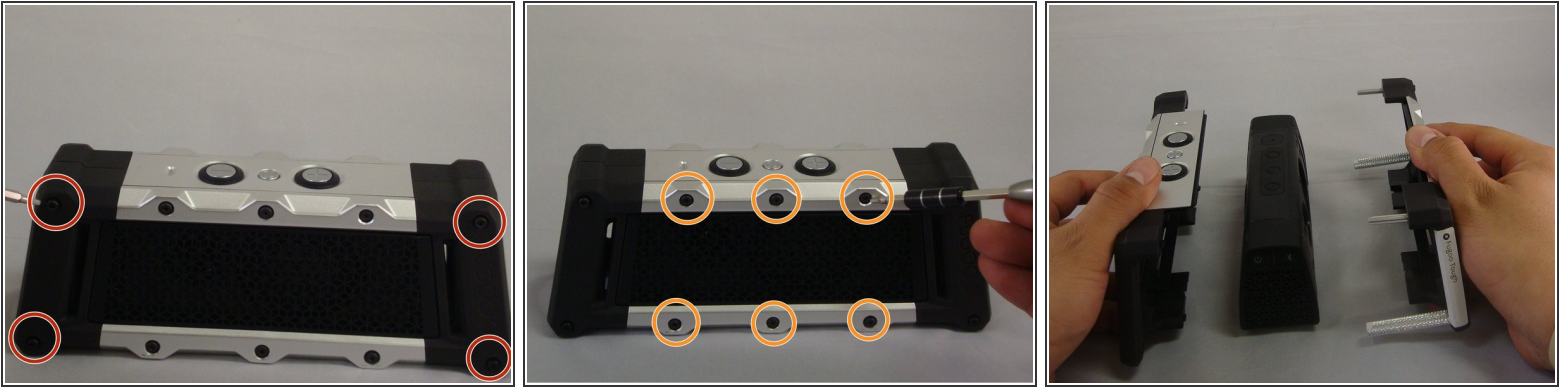
- [iFixit Opening Tools](#) (1)
- [Mako Driver Kit - 64 Precision Bits](#) (1)



## PARTS:

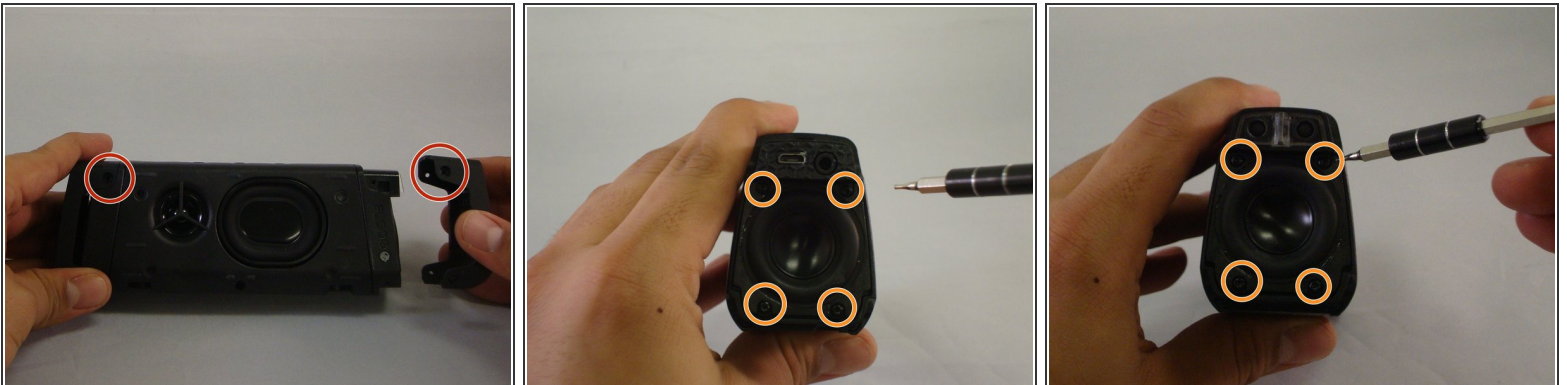
- [Fugoo Charging Port](#) (1)

## Step 1 — Charging Port



- Begin by unscrewing the four 10.72mm corner screws using the h2.0 screw driver.
- Using the h1.5 screwdriver and remove remaining six 5.79mm screws on the front of the speaker.
- Pull front part of shell away from back part of shell.

## Step 2



- Change to the h1.3 head. Remove all 4-5.57mm screws on both speaker covers
- Pull on the speaker covers, thus removing them
- Rotate to side the speaker that has the charging port. Remove the 4-5.57mm screws of the facing you.
- Rotate the speaker 180 degrees and then remove 4-5.57 screws on the side speaker that has the power/bluetooth buttons

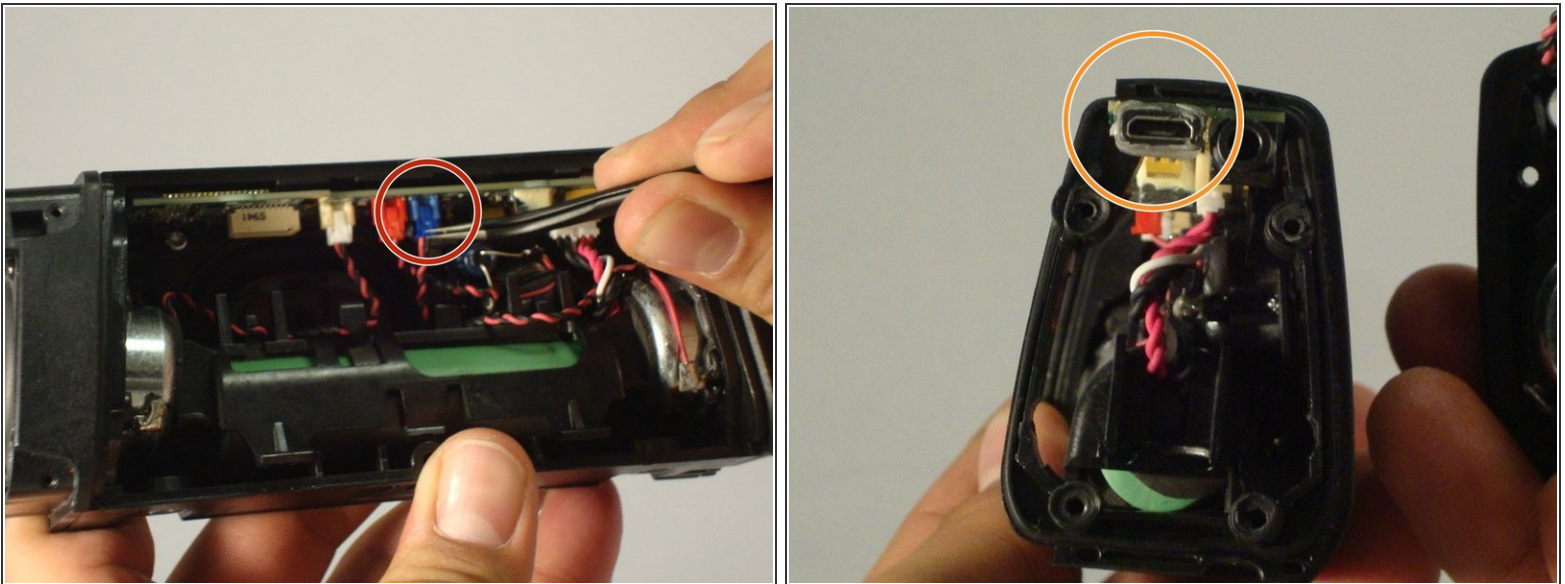


### Step 3



- Have back of speaker facing you, remove 5-12.70mm screws using 1/16 flat head screwdriver.
- Using the plastic opening tool you will be able to wedge back face of speaker off

### Step 4



- The circuit board will be revealed, you will notice the various individual speaker connections to the circuit board.
- Remove blue "clip" from the circuit board.
- From this point, pull the side panel off gently, exposing the charging port.
- At this time, you can remove the charging port and replace it.

To reassemble your device, follow these instructions in reverse order.