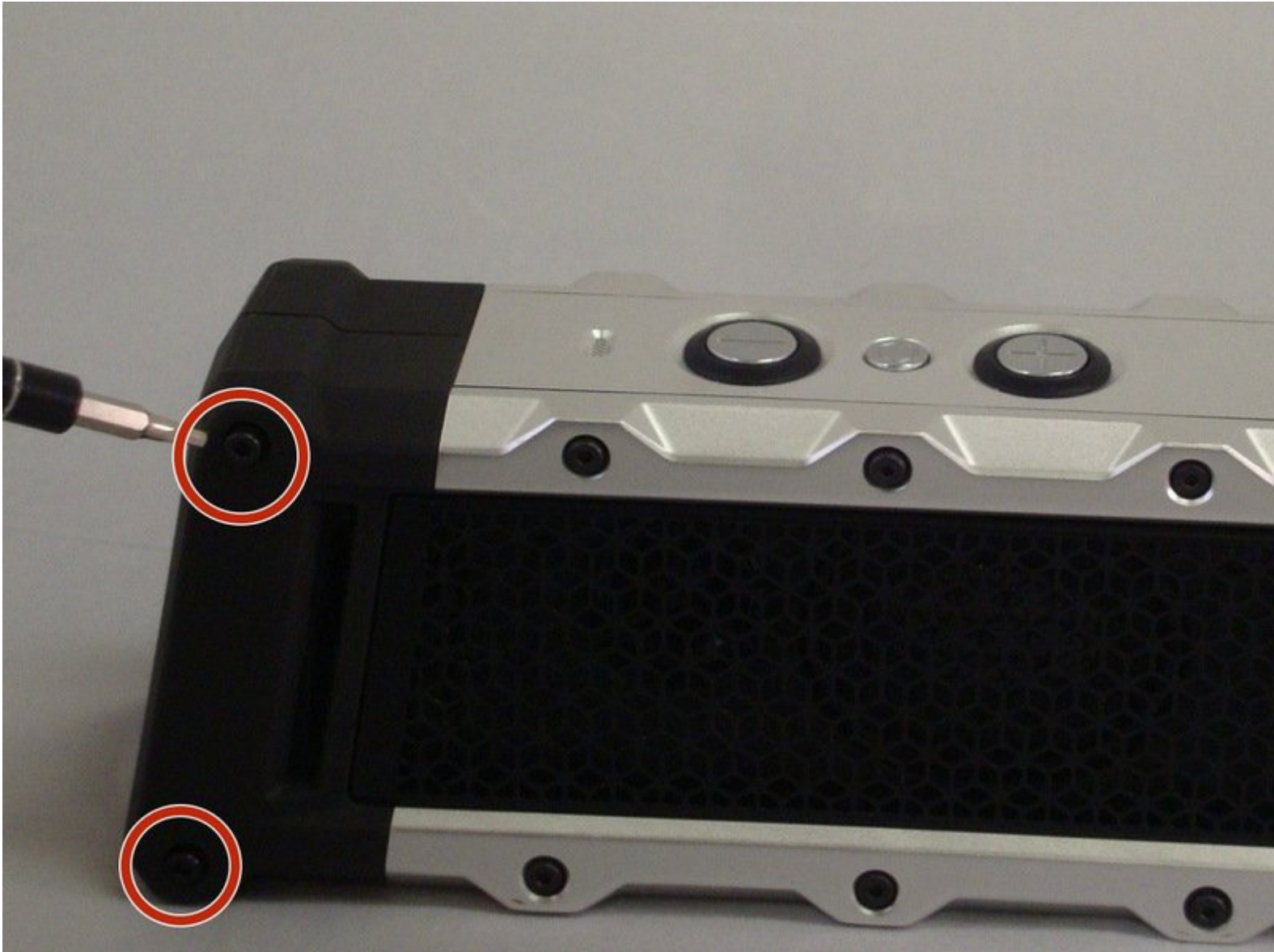




Fugoo Tough Power Button Replacement

Written By: Daniel

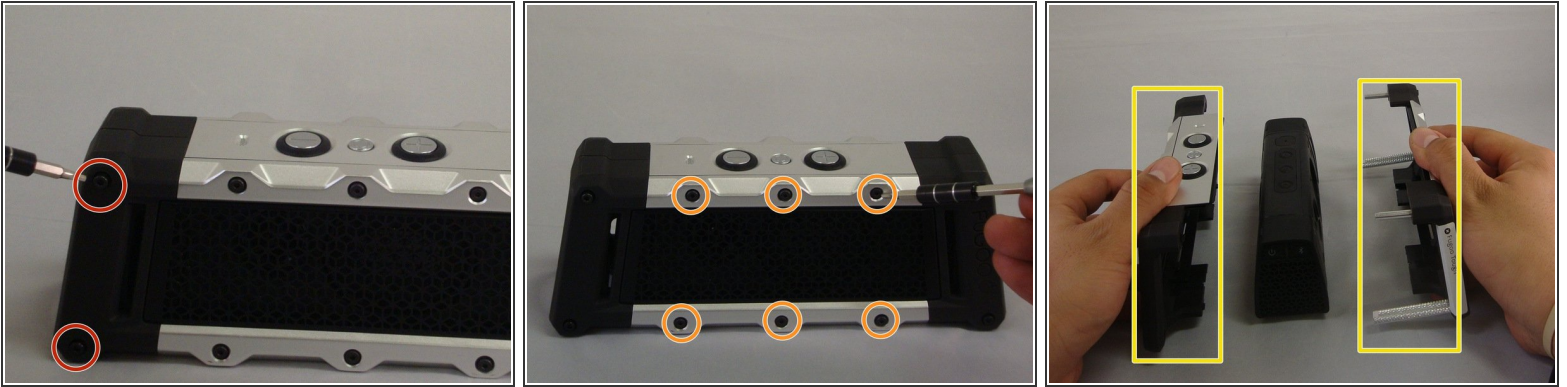




TOOLS:

- [Mako Driver Kit - 64 Precision Bits](#) (1)
 - [Soldering Workstation](#) (1)
-

Step 1 — Power Button



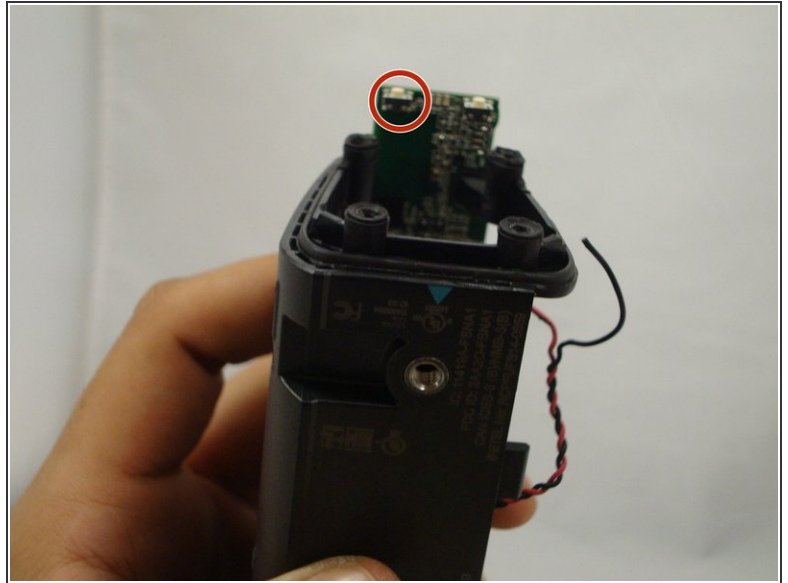
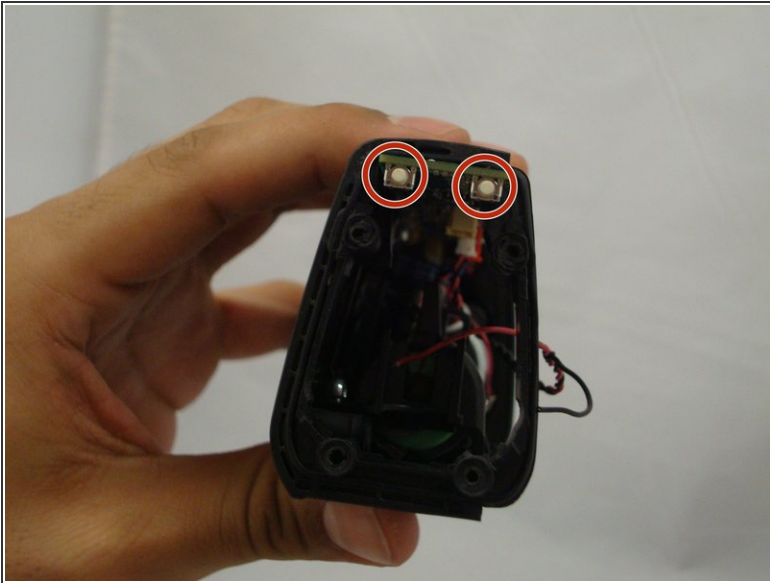
- Begin by unscrewing the four 10.72 mm corner screws using the Hex 2.0 screwdriver.
- Using the Hex 1.5 screwdriver, remove the remaining six 5.79 mm screws on the front of the speaker.
- Pull the front part of shell away from the back part of shell.

Step 2



- Change to the h1.3 head. Remove all four 5.57mm screws on both speaker covers.
- Pull on the speaker covers to remove them.
- Rotate the speaker 180 degrees and then remove the four 5.57 mm screws on the side speaker that has the power/bluetooth buttons.
- Pull apart the side speaker and its casing away from the body of the Fugoo.

Step 3



- After pulling apart the side speaker and its casing, you will see both the power and Bluetooth buttons on the underside of the circuit board.
- Desolder the power button and replace it on the motherboard.

To reassemble your device, follow these instructions in reverse order.