



# Fugoo Tough XL Bass Speaker Replacement

Removing and replacing the internal bass speaker of the Fugoo Tough XL.

Written By: Austin Coats



---

## INTRODUCTION

The two bass speakers are located on the left and right ends of the Fugoo Tough XL device.

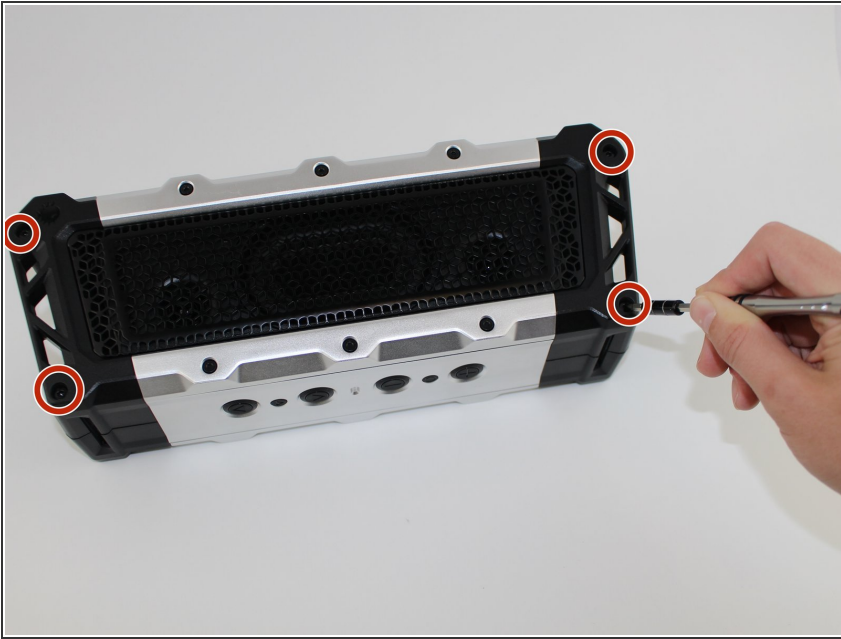
---



### TOOLS:

- [iFixit Opening Tools](#) (1)
  - [T10 Torx Screwdriver](#) (1)
  - [Tweezers](#) (1)
  - [3mm Hex Key \(or Bit\)](#) (1)
-

## Step 1 — Case




- Use a #3 Hex screwdriver to unscrew all four 3mm screws."

## Step 2



- Gently remove the outer shell.

 It should be relatively easy to pull apart. Don't be afraid to apply a necessary force.

## Step 3



- Pull out the device from the external case.
- Unscrew all 12mm T Head screws using a T10 screwdriver.
- Unscrew all 6mm T Head screws using a T10 screwdriver.

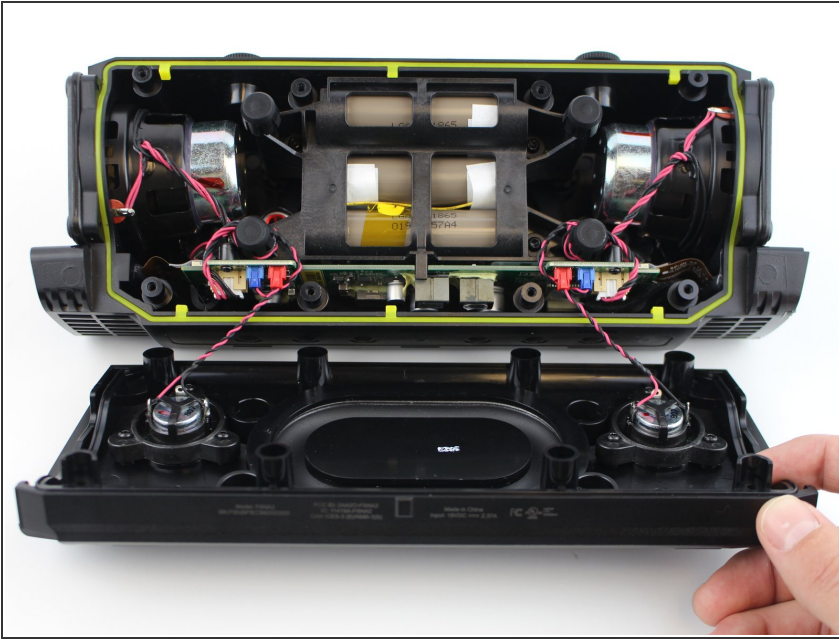
## Step 4




- Gently remove the side plates by using your hands to pull off.
  - Use plastic opening tool to pry off the back plate.
- ⓘ Work on the side with the Fugoo trademark.



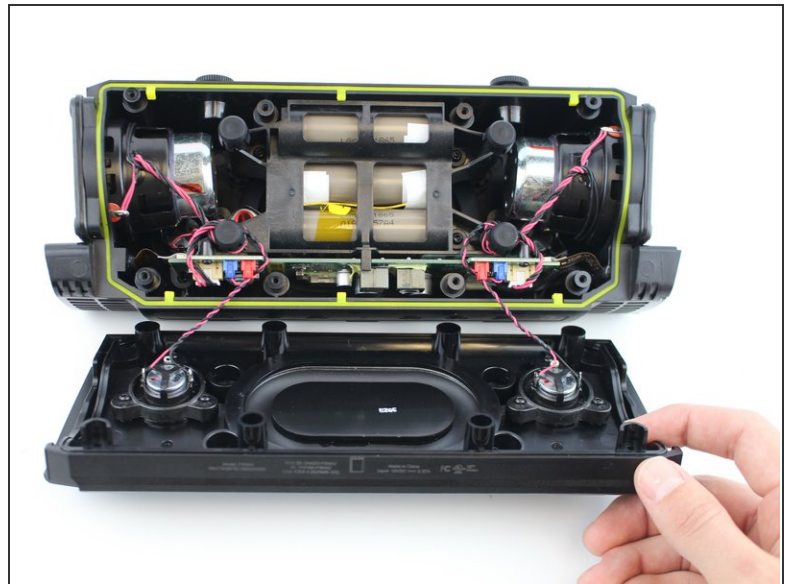
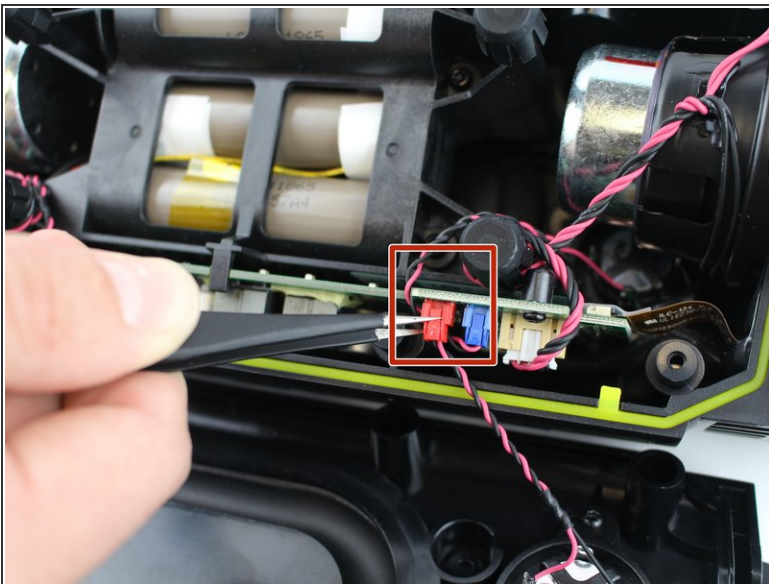
## Step 5



- Pull apart the front casing from the back casing, slowly. Try to avoid any tension on any of the connected cables.

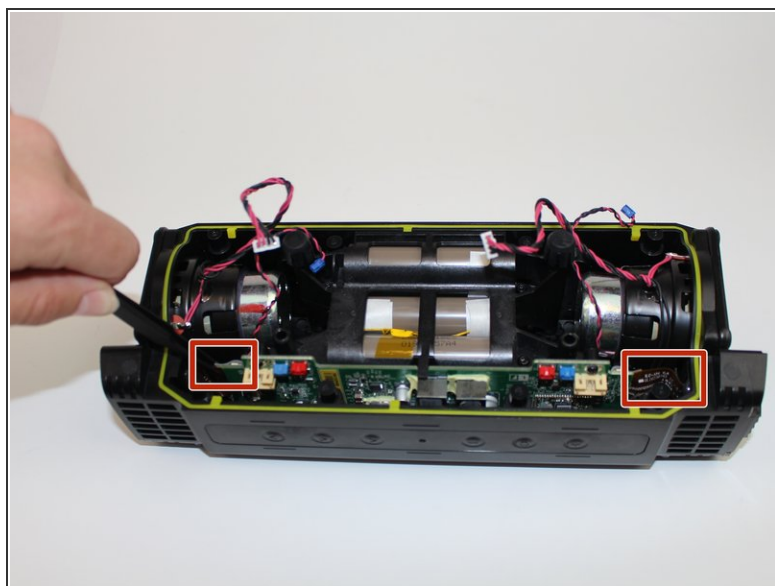
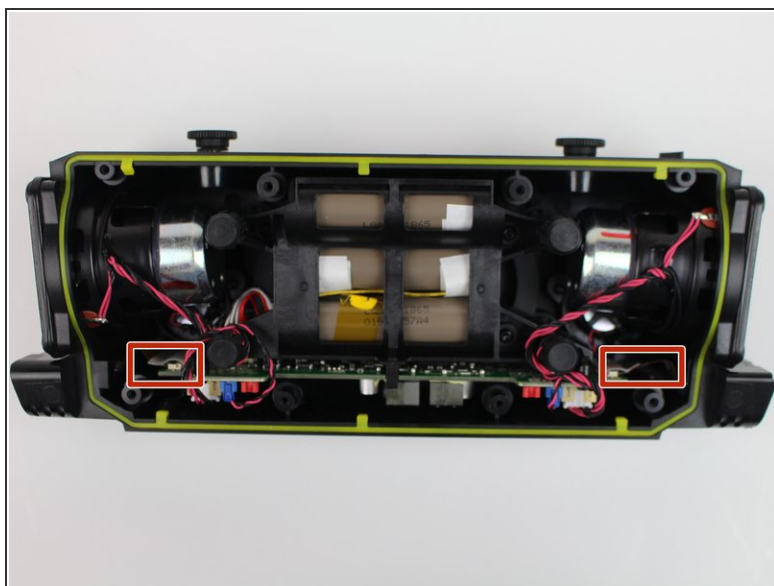
 Separate at a slow constant force to avoid damage to the speaker cables.

## Step 6 — Motherboard




- Carefully untangle the wires that are connected from the speaker to the motherboard.

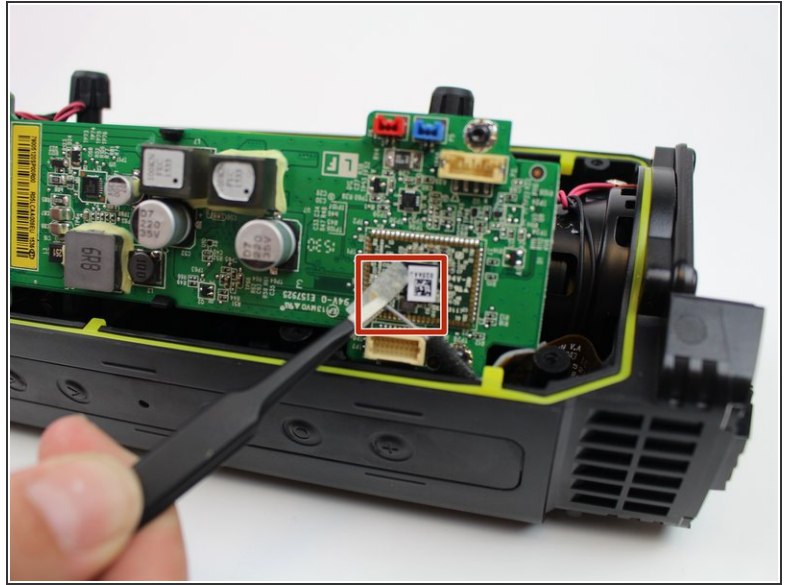
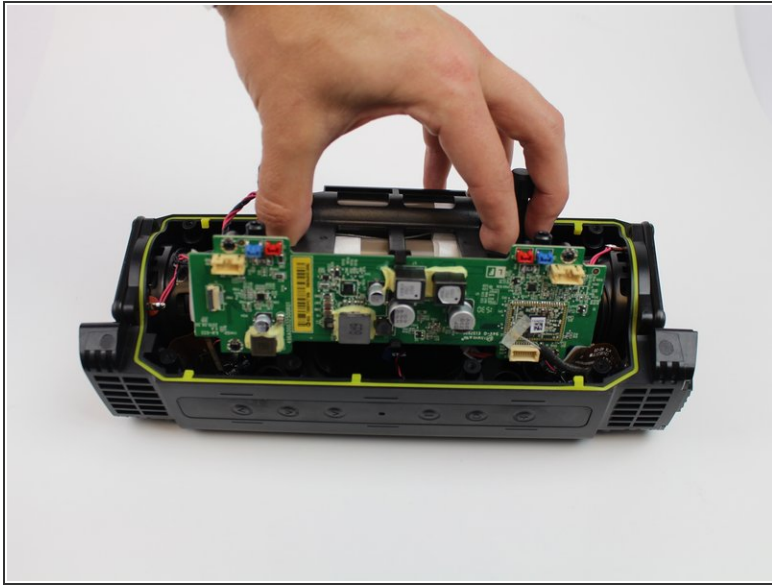
## Step 7






- Use tweezers to remove two ribbon wires on left and right side of motherboard.

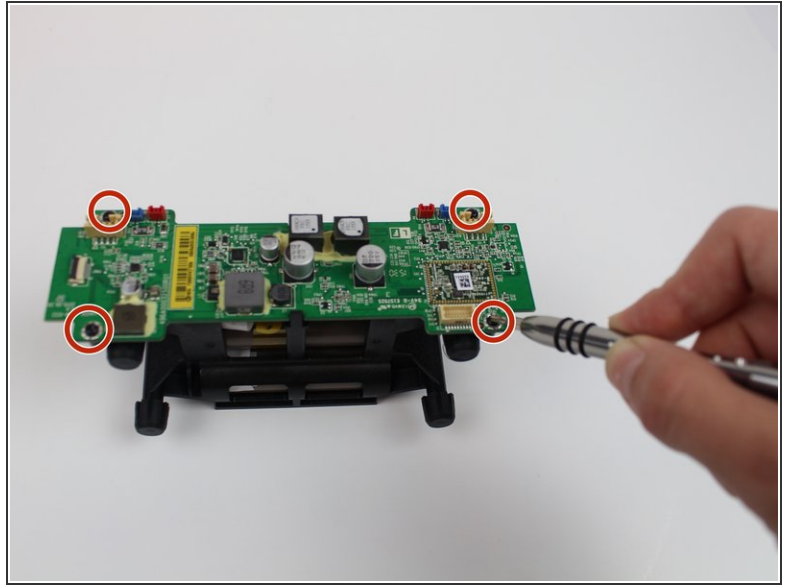
 Do not pull the cables by the cord, as this could cause damage to the cables and/or motherboard. Always disconnect the cables from the base by the motherboard using an iFixit opening tool

## Step 8



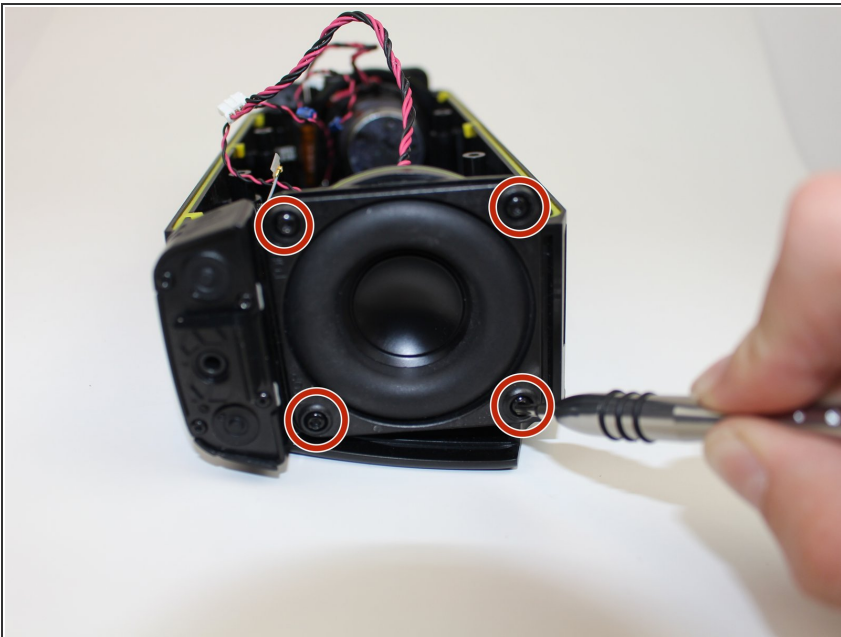
-  Pull out the motherboard halfway.
-  Unplug the ribbon gently using a tweezer.
-  There is a hidden ribbon on the motherboard, which becomes visible when the motherboard is been pulled out.

## Step 9



- Remove the motherboard and battery from the device.
- Use a #3 Hex screwdriver to unscrew all four 3mm screws."

## Step 10 — Bass Speaker



- Use a #3 Hex screwdriver to unscrew all four 3mm screws."



## Step 11



- Pull the bass speaker from the internal case.

To reassemble your device, follow these instructions in reverse order.